

PLUMBING GENERAL NOTES

THESE NOTES ARE APPLICABLE TO THE FULL SET OF CONTRACT DOCUMENTS.

- A. SLEEVE AND SEAL ALL WALL AND FLOOR PENETRATIONS. PROVIDE FIRESTOPPING FOR ALL PENETRATIONS.
- B. MAINTAIN SERVICE CLEARANCES OF ALL EQUIPMENT. ADVISE OTHER TRADES OF THE REQUIRED SERVICE CLEARANCES.
- C. PROVIDE FOR THE DRAINING AND REFILLING OF PIPING SYSTEMS, INCLUDING AIR REMOVAL, RESETTNG OF FLUSH VALVES, FLUSHING SYSTEMS OF DIRT AND SCALE CAUSED BY SHUTDOWNS AND STARTUPS.
- D. REFER TO EQUIPMENT/ FUTURE SCHEDULE FOR FINAL CONNECTION SIZES.
- E. PROVIDE CLEANOUTS AT THE BASE OF ALL STORM, SANITARY AND WASTE STACKS.
- F. PITCH 4" AND LARGER SANITARY AND WASTE PIPING AT 1/8" PER FOOT UNLESS OTHERWISE NOTED. FOR SANITARY AND WASTE PIPING 3" AND SMALLER PITCH AT 1/4" PER FOOT UNLESS OTHERWISE NOTED.
- G. COORDINATE LOCATION AND ELEVATION OF STORM AND SANITARY LATERALS AND WATER SERVICE WITH THE SITE CONTRACTOR. NO ALLOWANCE WILL BE MADE FOR ADDITIONAL COSTS DUE TO THE CONTRACTORS FAILURE TO COORDINATE TERMINATION POINTS. THE PLUMBING CONTRACTOR IS RESPONSIBLE FOR THE FINAL CONNECTION TO THE SITE UTILITIES.
- H. MINIMUM SIZE OF WASTE PIPING BELOW SLAB SHALL BE 3". MINIMUM SIZE OF VENT PIPING BELOW SLAB SHALL BE 2".
- I. PITCH 4" AND LARGER STORM PIPING AT 1/8" PER FOOT UNLESS NOTED OTHERWISE.

ELECTRIC WATER HEATER SCHEDULE - TANK TYPE											
NO.	SERVICE	TYPE	NOM. CAPACITY...	RATED STORAGE...	INPUT KW	RECOVERY GAL./HR	TEMP RISE DEG F	ELECTRIC			DESIGN MAKE
WH-1	DOMESTIC HW	TANK	55	42	5.5	25	90	VOLT	HZ	PHASE	
								208V	60	1	BRADFORD WHITE RE25513-3

DHW RECIRC PUMP SCHEDULE											
NO.	LOCATION	SERVICE	GPM	HEAD FT WATER	MOTOR			PHASE	AMP	RPM	TYPE
RP-1	MECH	DHW RECIRC	0-33	0-29	1/6	115		1	1.8	-	INLINE
											ENOVATIVE AUTOHOT DR099A

- REMARKS
1. AUTOHOT CONTROLLER DEMAND RECIRCULATION COMPLIANT WITH IECC 2020

THERMOSTATIC MIXING VALVE SCHEDULE									
NO.	VALVE PRESS. DROP & FLOW		MIN GPM	HW INLET	CW INLET	MIXED OUTLET	DESIGN MAKE	NOTES	
TMV-1	5 PSI	20 PSI							
	50 GPM	101 GPM	5.0	1-1/2"	1-1/2"	1-1/2"	POWERS LFIS150VL		DIGITAL MIXING VALVE

- NOTES:
1. MINIMUM GPM IS TO COMPLY WITH ASSE 1017.

DESIGNATION	DESCRIPTION	COLD WATER	HOT WATER	WASTE/ SANITARY/ STORM	VENT	REMARKS
FD-A	FLOOR DRAIN	-	-	4"	2"	JAY R. SMITH FIG. #2010
LAV-A	LAVATORY - WALL HUNG	1/2"	1/2"	2"	1-1/2"	AS SPECIFIED
LAV-B	LAVATORY - DROP IN	1/2"	1/2"	2"	1-1/2"	AS SPECIFIED
LAV-C	LAVATORY - WALL HUNG	1/2"	1/2"	2"	1-1/2"	ANTI-LIGATURE. SEE SPECIFICATION
MB-A	MOP BASIN	1/2"	1/2"	3"	2"	AS SPECIFIED
SH-A	SHOWER	1/2"	1/2"	2"	1-1/2"	ROLL-IN, ADA
SK-A	SINK	1/2"	1/2"	2"	1-1/2"	AS SPECIFIED
SK-B	SINK	1/2"	1/2"	2"	1-1/2"	AS SPECIFIED
UR-A	URINAL	3/4"	-	2"	1-1/2"	AS SPECIFIED
UR-B	URINAL (ADA)	3/4"	-	2"	1-1/2"	AS SPECIFIED
WC-A	WATER CLOSET - WALL HUNG	1"	-	4"	MIN 2"	PROVIDE SHOCK ABSORBER
WC-B	WATER CLOSET - WALL HUNG (ADA)	1"	-	4"	MIN 2"	PROVIDE SHOCK ABSORBER
WCC	WATER CLOSET - WALL HUNG	1"	-	4"	2"	ANTI-LIGATURE. SEE SPECIFICATION
RD-A	ROOF DRAIN - PRIMARY	-	-	SEE PLAN	-	AS SPECIFIED
RD-B	ROOF DRAIN - SECONDARY	-	-	SEE PLAN	-	AS SPECIFIED
WHA	WALL HYDRANT	3/4"	-	-	-	AS SPECIFIED

SHOCK ABSORBER SCHEDULE			
NO.	FIXTURE UNIT RATING	SIZE IN INCHES	PDI SYMBOL
SA-A	1 - 11	1/2"	A
SA-B	12 - 32	3/4"	B
SA-C	33 - 60	1"	C
SA-D	61 - 113	1 1/4"	D
SA-E	114 - 154	1 1/2"	E
SA-F	155 - 330	2"	F

PLUMBING SYMBOL LIST	
SYMBOL	DESCRIPTION
	POINT OF CONNECTION
NTS	NOT TO SCALE
(E)	EXISTING
(ETR)	EXISTING TO REMAIN
AFF	ABOVE FINISHED FLOOR
BFF	BELOW FINISHED FLOOR
VTR	VENT THRU ROOF
GC	GENERAL CONTRACTOR
MC	MECHANICAL CONTRACTOR
PC	PLUMBING CONTRACTOR
EC	ELECTRICAL CONTRACTOR
(E)	EXISTING PIPING
---	NEW PIPING LOCATED ABOVE FLOOR/SLAB
---	NEW PIPING LOCATED BELOW FLOOR/SLAB
---	COLD WATER PIPING (CW)
---	HOT WATER PIPING (HW)
---	HOT WATER RECIRCULATING PIPING (HWR)
---	TEMPERED HOT WATER PIPING (TW)
---	TEMPERED HOT WATER RETURN PIPING (TWR)
---	WATER SERVICE - EXTERIOR
---	SANITARY SEWER PIPING
---	GREASE WASTE PIPING (GW)
---	INDIRECT WASTE PIPING (IW)
---	VENT PIPING (V)
---	STORM WATER SEWER PIPING (ST)
---	SECONDARY STORM WATER SEWER PIPING (ST(2))
---	NATURAL GAS PIPING (G)
---	ELBOW DOWN
---	45° OFFSET
---	ELBOW UP
---	BOTTOM/TEE CONNECTION
---	TOP TEE CONNECTION
---	"P" TRAP
---	PIPE CONTINUATION
---	CAP OR PLUG
---	DECK PLATE CLEANOUT (DPCO)
---	WALL PLATE CLEANOUT (WPCO)
---	CLEANOUT (CO)
---	FLOOR DRAIN (FD) / FLOOR SINK (FS)
---	ROOF DRAIN
---	WALL HYDRANT (WH) / HOSE BIBB (HB)
---	STRAINER
---	WATER METER
---	SHUT OFF VALVE
---	BALANCING VALVE
---	CHECK VALVE
---	SOLENOID VALVE
---	PRESSURE REDUCING VALVE
---	RELIEF VALVE
---	SHUT-OFF SWITCH
---	PIPE ANCHOR
---	PIPE GUIDE
---	UNION
---	BACKFLOW PREVENTER (BFP)
---	SHOWER HEAD
---	SHOCK ABSORBER (SA)
---	RECIRCULATION PUMP
---	THERMOMETER
---	PRESSURE GAUGE
---	DRAWING KEYNOTE
---	PIPE RISER CALLOUT



Mechanical/Electrical Engineering Consultants

Capital District | Rochester | Buffalo | Syracuse

433 STATE STREET, 4TH FLOOR  
SCHENECTADY, NY 12305

518.533.2171  
www.meengineering.com

REVISIONS:

NUM.	DATE	DESCRIPTION

100% BID DOCUMENTS

25 WALLKILL AVE • MONTGOMERY • NY 12549  
O. 845.294.2724 | F. 888.305.6442

WWW.ADGARCHITECT.COM  
CONTACT@ADGARCHITECT.COM

ARCHITECTURE • PLANNING • INTERIORS

Project: TOWN OF MONTGOMERY POLICE STATION  
110 BRACKEN ROAD, MONTGOMERY,  
NEW YORK 12549

Drawing: GENERAL NOTES & SYMBOLS LIST



Project: 23138 Date: 02/24/25

Drawn: CES Scale: AS NOTED

Drawing Number:

P-001





1 PLUMBING SITE PLAN  
1/16" = 1'-0"

0' 8' 16' 32'

P-002 DRAWING NOTES

- 1 GAS GENERATOR BY OTHERS. 2400 CFH. GAS METER BY CENTRAL HUDSON. SEE DETAIL 1/P-504.
- 2 PROVIDE PIPE BOLLARDS AROUND GAS METER PER CENTRAL HUDSON STANDARDS. SEE DETAIL 2/P-504.

ME

ENGINEERING

Mechanical/Electrical Engineering Consultants

Capital District | Rochester | Buffalo | Syracuse

433 STATE STREET, 4TH FLOOR  
SCHENECTADY, NY 12305

518.533.2171  
www.meeengineering.com

REVISIONS:		
NUM.	DATE	DESCRIPTION

100%

BID DOCUMENTS

ADG ARCHITECTS

25 WALLKILL AVE • MONTGOMERY • NY 12549  
O. 845.294.2724 | F. 888.305.6442  
WWW.ADGARCHITECT.COM  
CONTACT@ADGARCHITECT.COM  
ARCHITECTURE • PLANNING • INTERIORS

Project: TOWN OF MONTGOMERY POLICE STATION  
110 BRACKEN ROAD, MONTGOMERY,  
NEW YORK 12549

Drawing: PLUMBING SITE PLAN

Project: 23138

Date: 02/24/25

Drawn: CES

Scale: AS NOTED

Drawing Number:

P-002



1 UNDERSLAB PLAN - PLUMBING  
1/4" = 1'-0"



P-100 DRAWING NOTES

- 4" P-TRAP UP TO FD
- 2" V UP
- 4" SAN UP TO DPCO
- 2" P-TRAP UP TO SH-A
- 2" SAN UP TO SK
- 2" SAN UP TO SH-A
- 2" SAN UP TO UR
- 3" P-TRAP UP TO MB, PROVIDE 2" VENT IN WALL
- 4" SAN UP IN WALL TO WALL MOUNT WATER CLOSET SANITARY WASTE
- 2" SAN UP TO LAV
- 2" SAN UP TO WATER COOLER
- 4" SAN UP TO FLOOR MOUNTED WATER CLOSET
- 2" SAN UP TO CEILING OF FIRST FLOOR, OFFSET AND ROUTE TO SECOND FLOOR CONDENSATE DRAIN BOX



Mechanical/Electrical Engineering Consultants

Capital District | Rochester | Buffalo | Syracuse

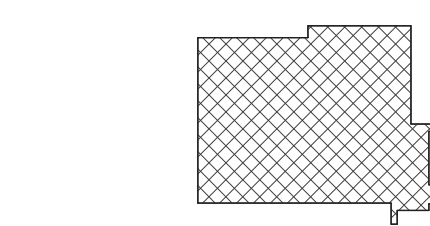
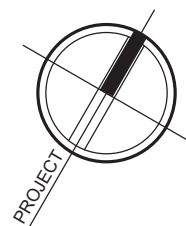
433 STATE STREET, 4TH FLOOR  
SCHENECTADY, NY 12305

518.533.2171  
www.meengineering.com

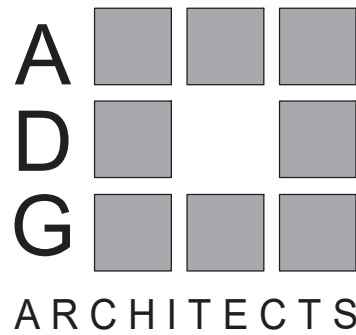
REVISIONS:

NUM.	DATE	DESCRIPTION

100% BID DOCUMENTS



KEY PLAN



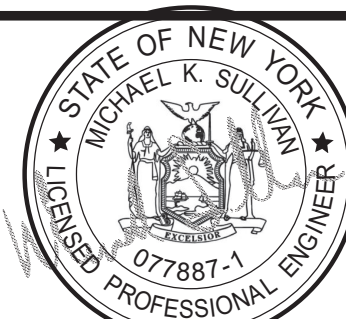
25 WALLKILL AVE • MONTGOMERY • NY 12549  
O. 845.294.2724 | F. 888.305.6442

WWW.ADGARCHITECT.COM  
CONTACT@ADGARCHITECT.COM

ARCHITECTURE • PLANNING • INTERIORS

Project: TOWN OF MONTGOMERY POLICE STATION  
110 BRACKEN ROAD, MONTGOMERY,  
NEW YORK 12549

Drawing: UNDERSLAB PLAN - PLUMBING

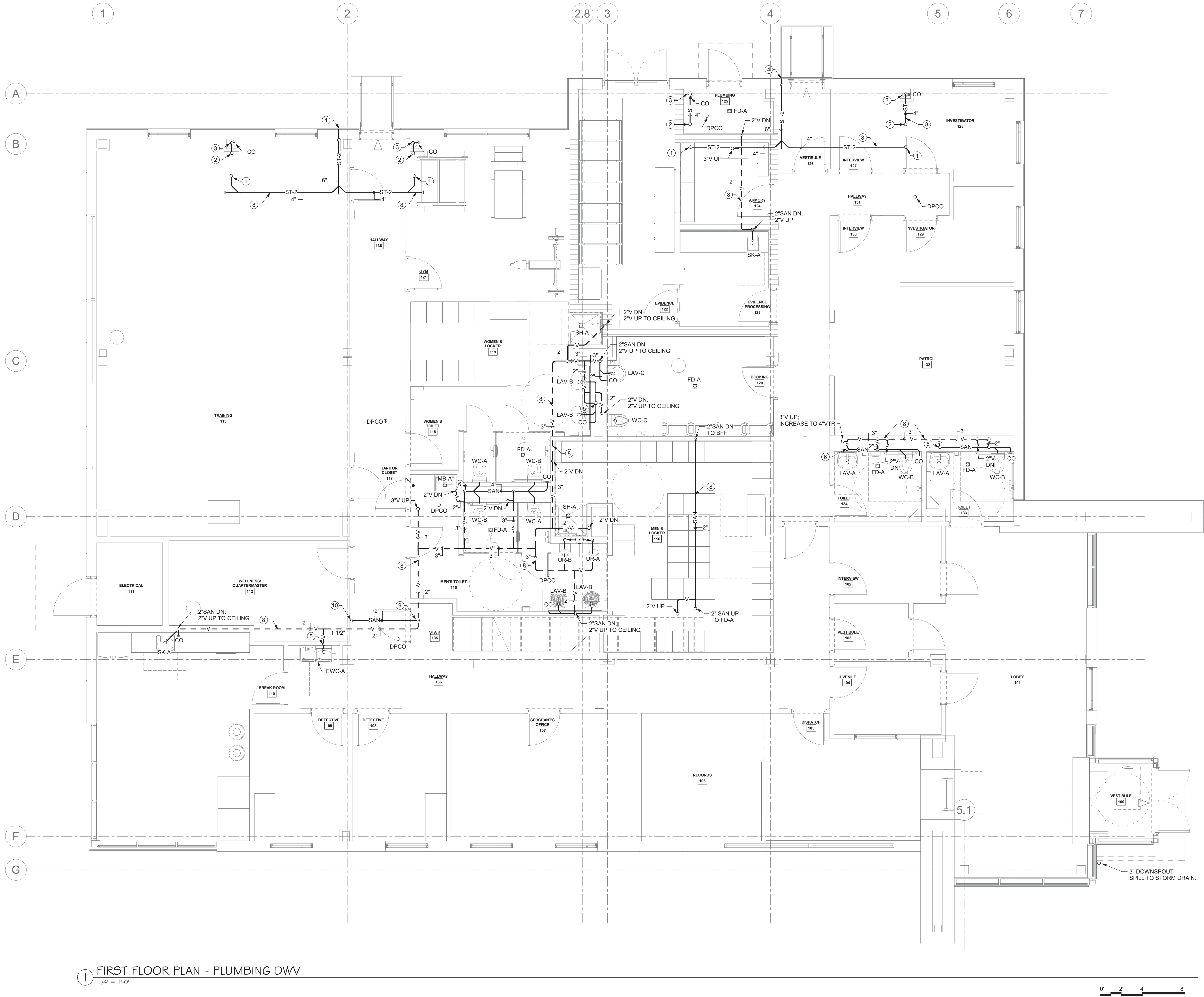


Project: 23138 Date: 02/24/25

Drawn: CES Scale: AS NOTED

Drawing Number:

P-100



1 FIRST FLOOR PLAN - PLUMBING DWV  
1/4" = 1'-0"

**P-101S DRAWING NOTES** ⓧ

- 4" SECONDARY STORM PIPING UP TO RD-B.
- 4" PRIMARY STORM PIPING UP TO RD-A.
- 4" PRIMARY STORM PIPING DOWN TO BELOW GRADE. PROVIDE WALL PLATE CLEANOUT AT 1'-0" AFF. PROVIDE ACCESS PANEL FOR CLEANOUT ACCESS REFER TO DETAIL 8/P-503.
- TERMINATE 6" SECONDARY STORM OUTLET WITH LAMBS TONGUE. PROVIDE SPLASH BLOCK. INSTALL PER DETAIL 7/P-504.
- 2" SAN DN: 1-1/2" V UP
- 4" SAN DN: 3" V UP
- 2" SAN DN: 2" V UP
- DWV/STORM PIPING WILL BE INSTALLED IN CEILING WITH PLENUM RETURN. SEE HVAC DRAWINGS FOR EXACT LOCATIONS OF PLENUM CEILING RETURN AREAS. ALL PIPING EXPOSED IN CEILING PLENUM SHALL BE PLENUM RATED WITH FSI AND SDI IN COMPLIANCE WITH LOCAL CODES. REFER TO SPECIFICATION FOR SDI AND FSI MINIMUM REQUIREMENTS.
- PROVIDE 2" SAN UP IN WALL ABOVE TO CONDENSATE DRAIN BOX.
- 2" SAN DN TO BFF.



Mechanical/Electrical Engineering Consultants

Capital District | Rochester | Buffalo | Syracuse

433 STATE STREET, 4TH FLOOR  
SCHENECTADY, NY 12305  
518.533.2171  
www.meengineering.com

**REVISIONS:**

NUM.	DATE	DESCRIPTION

**100% BID DOCUMENTS**

**KEY PLAN**

WORK AREA

**ADG ARCHITECTS**

25 WALLKILL AVE • MONTGOMERY • NY 12549  
O. 845.294.2724 | F. 888.305.6442  
WWW.ADGARCHITECT.COM  
CONTACT@ADGARCHITECT.COM

ARCHITECTURE • PLANNING • INTERIORS

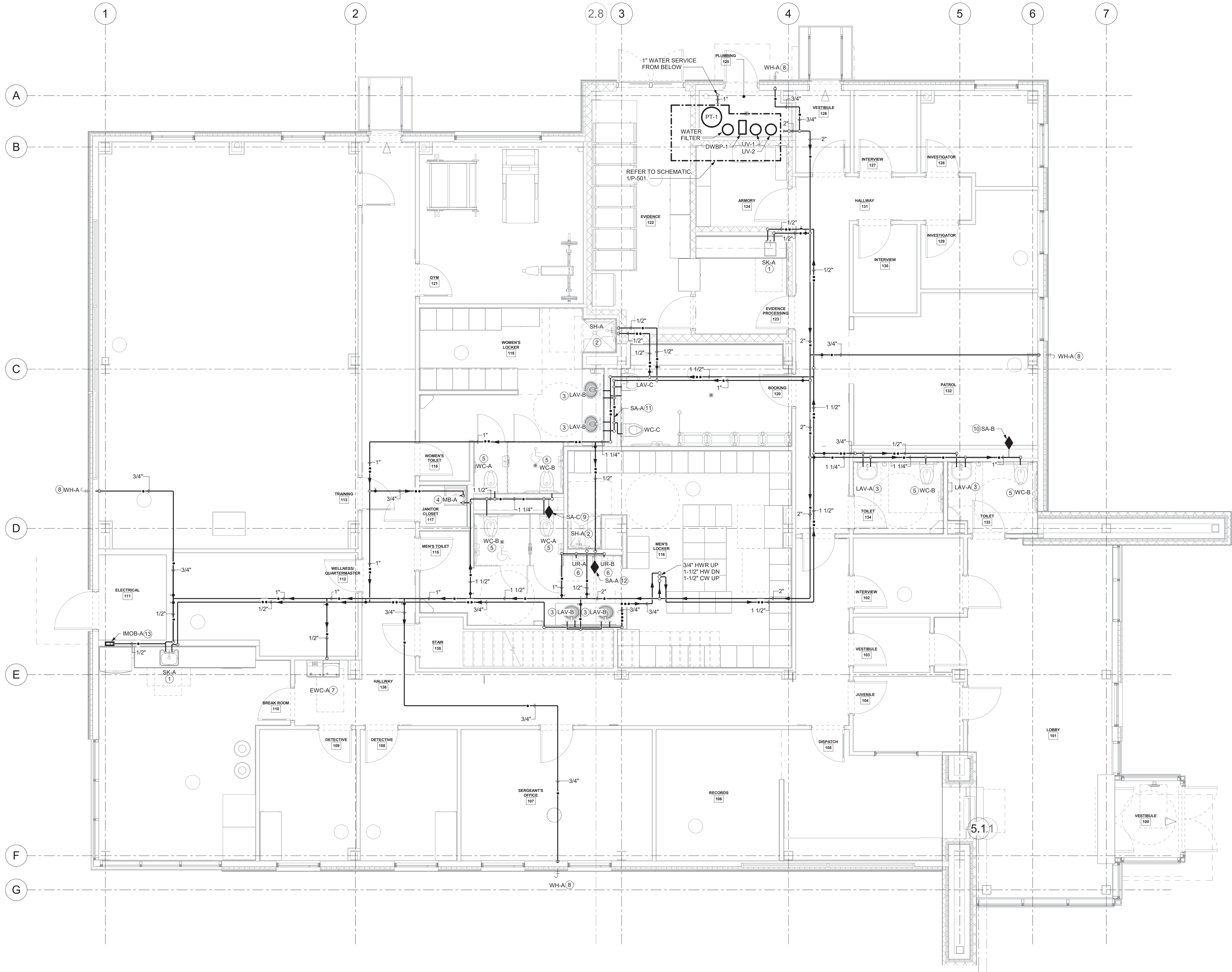
Project: **TOWN OF MONTGOMERY POLICE STATION**  
110 BRACKEN ROAD, MONTGOMERY,  
NEW YORK 12549

Drawing: **FIRST FLOOR PLAN - PLUMBING DWV**



Project: 23138 Date: 02/24/25  
Drawn: CES Scale: AS NOTED  
Drawing Number:  
**P-101S**





**P-101W DRAWING NOTES** ⓧ

- 1 SK-A: PROVIDE 1/2" HW & 1/2" CW DN.
- 2 SH-A: PROVIDE 1/2" HW & 1/2" CW DN TO SHOWER VALVE.
- 3 LAV: PROVIDE 1/2" HW & 1/2" CW TO FIXTURE.
- 4 MB: PROVIDE 1/2" HW & 1/2" CW TO FIXTURE.
- 5 WC: PROVIDE 1" CW TO FIXTURE FLUSH VALVE.
- 6 UR: PROVIDE 3/4" CW TO FIXTURE FLUSH VALVE.
- 7 EWC-A: PROVIDE 1/2" CW TO FIXTURE. COORDINATE EXACT LOCATION WITH SPECIFIED FIXTURE MANUFACTURER'S IOM.
- 8 WH-A: PROVIDE 3/4" CW DN TO WALL HYDRANT. REFER TO DETAIL 9/P-503.
- 9 INSTALL SHOCK ARRESTOR FOR 20 FLUSH VALVE FIXTURE UNITS AT THIS LOCATION. PROVIDE 8"X8" ACCESS PANEL FOR SHOCK ARRESTOR SERVICING.
- 10 INSTALL SHOCK ARRESTOR FOR 16 FLUSH VALVE FIXTURE UNITS AT THIS LOCATION. PROVIDE 8"X8" ACCESS PANEL FOR SHOCK ARRESTOR SERVICING.
- 11 INSTALL SHOCK ARRESTOR FOR 5 FLUSH VALVE FIXTURE UNITS AT THIS LOCATION. PROVIDE 8"X8" ACCESS PANEL FOR SHOCK ARRESTOR SERVICING.
- 12 INSTALL SHOCK ARRESTOR FOR 8 FLUSH VALVE FIXTURE UNITS AT THIS LOCATION. PROVIDE 8"X8" ACCESS PANEL FOR SHOCK ARRESTOR SERVICING.
- 13 PROVIDE 1/2" CW TO RECESSED REFRIGERATOR SUPPLY BOX IN WALL. PROVIDE WATERLINE TO REFRIGERATOR.



Mechanical/Electrical Engineering Consultants

Capital District | Rochester | Buffalo | Syracuse  
433 STATE STREET, 4TH FLOOR  
SCHENECTADY, NY 12305  
518.533.2171  
www.meengineering.com

**REVISIONS:**

NUM.	DATE	DESCRIPTION

**100% BID DOCUMENTS**

**ADG ARCHITECTS**

25 WALLKILL AVE • MONTGOMERY • NY 12549  
O. 845.294.2724 | F. 888.305.6442  
WWW.ADGARCHITECT.COM  
CONTACT@ADGARCHITECT.COM

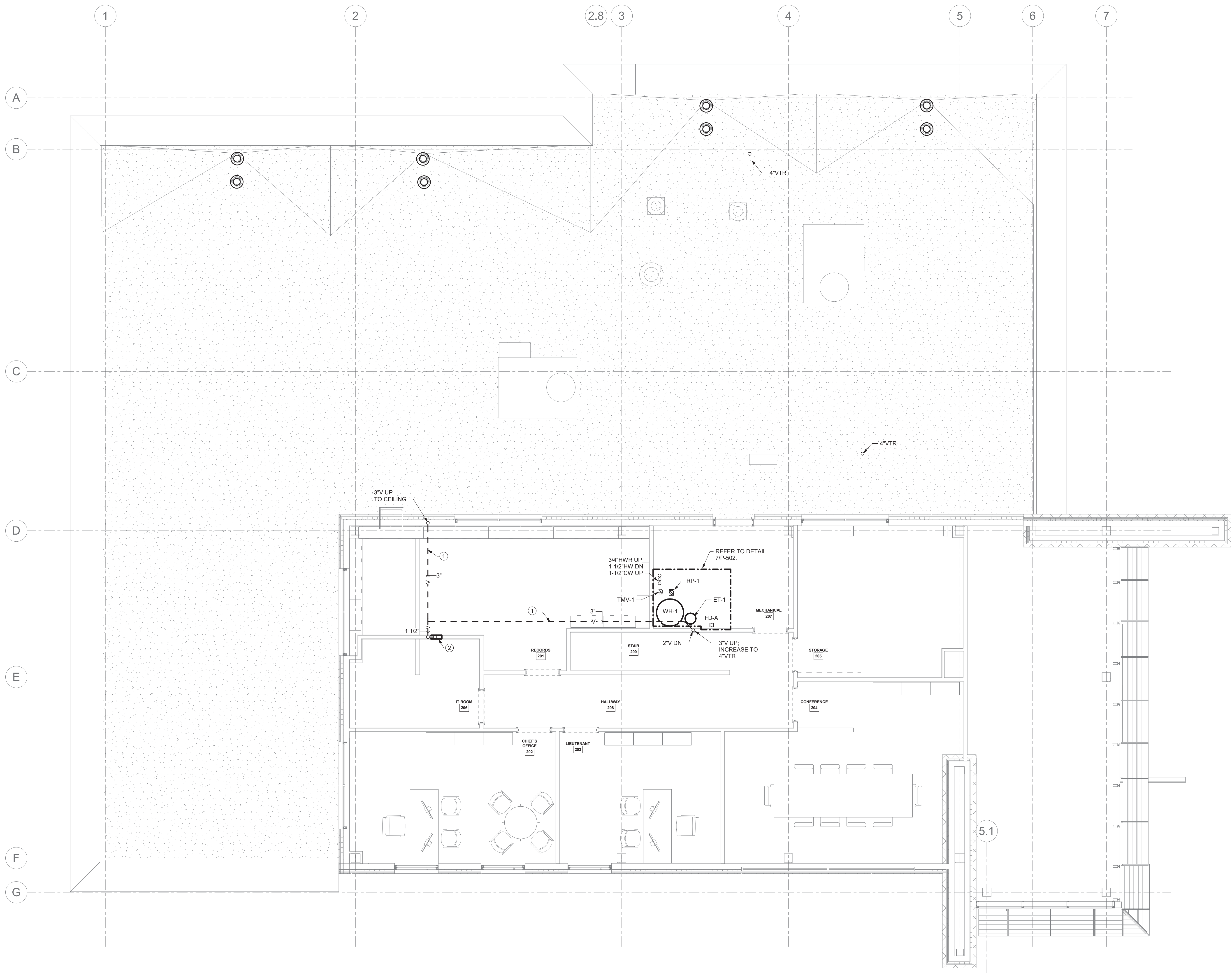
ARCHITECTURE • PLANNING • INTERIORS

Project: **TOWN OF MONTGOMERY POLICE STATION**  
110 BRACKEN ROAD, MONTGOMERY,  
NEW YORK 12549

Drawing: **FIRST FLOOR PLAN - PLUMBING**

Project: 23138 Date: 02/24/25  
Drawn: CES Scale: AS NOTED  
Drawing Number:  
**P-101W**





1 SECOND FLOOR PLAN - PLUMBING  
1/4" = 1'-0"

**P-102 DRAWING NOTES** (X)

- DWV/STORM PIPING WILL BE INSTALLED IN CEILING WITH PLENUM RETURN. SEE HVAC DRAWINGS FOR EXACT LOCATIONS OF PLENUM CEILING RETURN AREAS. ALL PIPING EXPOSED IN CEILING PLENUM SHALL BE PLENUM RATED WITH FSI AND SDI THAT MEETS COMPLIANCE WITH LOCAL CODES. REFER TO SPECIFICATION FOR SDI AND FSI MINIMUM REQUIREMENTS.
- PROVIDE 2" SAN DN; 1-1/2" V UP IN WALL. PROVIDE CONDENSATE DISPOSAL WALL BOX AT THIS LOCATION. INSTALL PER DETAIL 3/P-504.



Mechanical/Electrical Engineering Consultants

Capital District | Rochester | Buffalo | Syracuse  
433 STATE STREET, 4TH FLOOR  
SCHENECTADY, NY 12305  
518.533.2171  
www.meengineering.com

REVISIONS:

NUM.	DATE	DESCRIPTION

100% BID DOCUMENTS

KEY PLAN

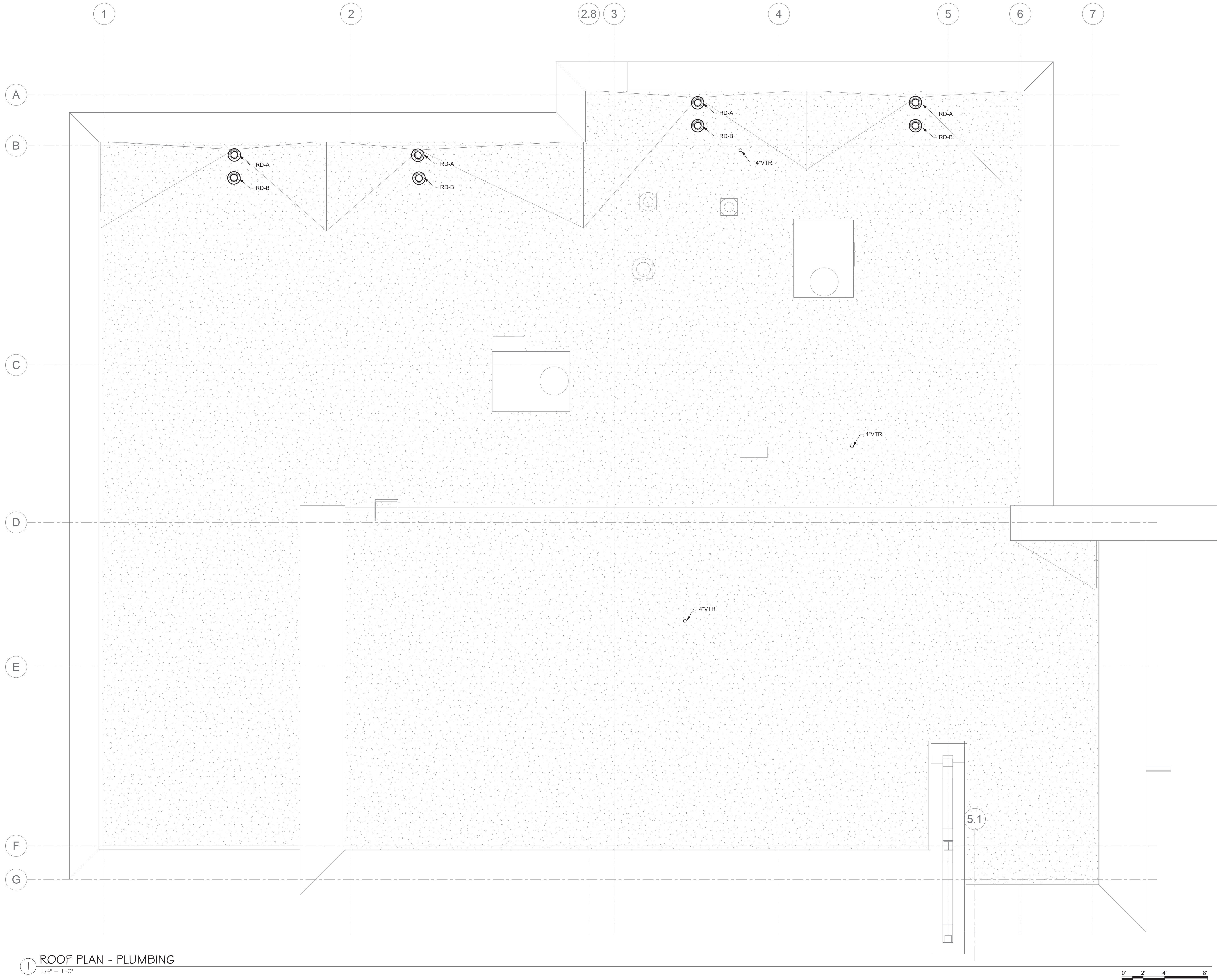
25 WALLKILL AVE • MONTGOMERY • NY 12549  
O. 845.294.2724 | F. 888.305.6442  
WWW.ADGARCHITECT.COM  
CONTACT@ADGARCHITECT.COM  
ARCHITECTURE • PLANNING • INTERIORS

Project: TOWN OF MONTGOMERY POLICE STATION  
110 BRACKEN ROAD, MONTGOMERY,  
NEW YORK 12549

Drawing: SECOND FLOOR PLAN - PLUMBING

Project: 23138 Date: 02/24/25  
Drawn: CES Scale: AS NOTED  
Drawing Number:  
**P-102**





1 ROOF PLAN - PLUMBING  
1/4" = 1'-0"



Mechanical/Electrical Engineering Consultants

Capital District | Rochester | Buffalo | Syracuse  
433 STATE STREET, 4TH FLOOR  
SCHENECTADY, NY 12305  
518.533.2171  
www.meengineering.com

REVISIONS:		
NUM.	DATE	DESCRIPTION

100% BID DOCUMENTS

25 WALLKILL AVE • MONTGOMERY • NY 12549  
O. 845.294.2724 | F. 888.305.6442  
WWW.ADGARCHITECT.COM  
CONTACT@ADGARCHITECT.COM

ARCHITECTS

ARCHITECTURE • PLANNING • INTERIORS

Project: TOWN OF MONTGOMERY POLICE STATION  
110 BRACKEN ROAD, MONTGOMERY,  
NEW YORK 12549

Drawing: ROOF PLAN - PLUMBING

Project: 23138 Date: 02/24/25  
Drawn: CES Scale: AS NOTED  
Drawing Number:

P-103



UV WATER TREATMENT SYSTEM PIPING SCHEMATIC NOTES:

- 1-1/2" RAW WATER SUPPLY FROM WELL SYSTEM  
SEE FLOOR PLAN FOR CONTINUATION.
- SAMPLING PORT AND VALVE (TYPICAL). OUTLET PORT:  
SMOOTH POLISHED. LEAD FREE BORE REQUIRED PER  
NYSDOH. THREADED BOILER DRAIN TYPE VALVE WILL  
NOT BE ACCEPTABLE.
- BALL VALVE (TYPICAL)
- SEDIMENT FILTER ASSEMBLY. 2" INLET  
2" OUTLET
- UV WATER TREATMENT UNIT. MAXIMUM FLOW  
RATE FOR EACH UNIT = 20 GPM. UNIT TO BE  
INSTALLED IN VERTICAL ONLY. INSTALL EACH UNIT  
TO ALLOW UV LAMPS TO BE REMOVED FROM THE TOP.  
HOUSING UNIT SIZE = 31" LONG x 4" DIA. PROVIDE  
UNISTRUT ASSEMBLY FOR MOUNTING TO EXISTING WALL.
- BALANCING HEADER ASSEMBLY. TYPICAL ON  
INLET AND OUTLET OF UV TREATMENT EQUIP.  
(2) TWO UV TREATMENT UNITS INSTALLED IN  
VERTICAL AND PIPED IN PARALLELL
- FLOW METER / FLOW RESTRICTOR ASSEMBLY  
MAXIMUM FLOW INPUT = 20 GPM.  
(TYP ON EACH UNIT)
- COOLING FAN ASSEMBLY
- UV SENSOR
- 1-1/4" SOLENOID VALVE
- UV EQUIPMENT CONTROL PANELS. PROVIDE ONE  
PANEL FOR EACH UV TREATMENT ASSEMBLY
- TYPICAL CONTROL WIRING SCHEMATIC. REPEAT  
FOR TWO UNITS.
- 2" TREATED WATER OUT TO BUILDING. SEE  
FLOOR PLANS FOR CONTINUATION.
- 1-1/2" TOTALIZING TYPE WATER METER. ASSURED AUTOMATION  
MODEL G2, 1-1/2" NPT PIPE CONNECTIONS
- GRUNDFOS VARIABLE SPEED PRESSURE BOOSTER PUMP (DWBP-1)  
SEE SCHEDULE FOR MODEL AND CAPACITY. MOUNT ON WALL OR PROVIDE FLOOR  
STAND FOR MOUNTING PUMP FRAME.
- 1-1/2" SUCTION INLET
- 1-1/2" PUMP DISCHARGE

NORMAL OPERATION OF UV FILTERS WILL  
UTILIZE THREE UV UNITS PIPED IN PARALLEL.

DESIGN ALLOWS THE BUILDING TO OPERATE  
ON ANY ONE UV UNITS, IN ORDER TO PERFORM  
MAINTENANCE OF ONE OF THE TWO UNITS.  
BUILDING WATER SUPPLY WILL NOT BE REQUIRED  
TO BE SHUT DOWN DURING THIS PERIOD.

PIPING SCHEMATIC IS DIAGRAMMATIC TO  
PROVIDE PIPING AND VALVES FOR  
SHUT DOWN OF ANY UV ASSEMBLY.

PROVIDE CONTROL WIRING AND ASSOCIATED  
CONTROL PANEL FOR EACH UV UNIT AS  
INDICATED IN THIS SCHEMATIC. COORDINATE  
WITH EC FOR LINE POWER SUPPLY

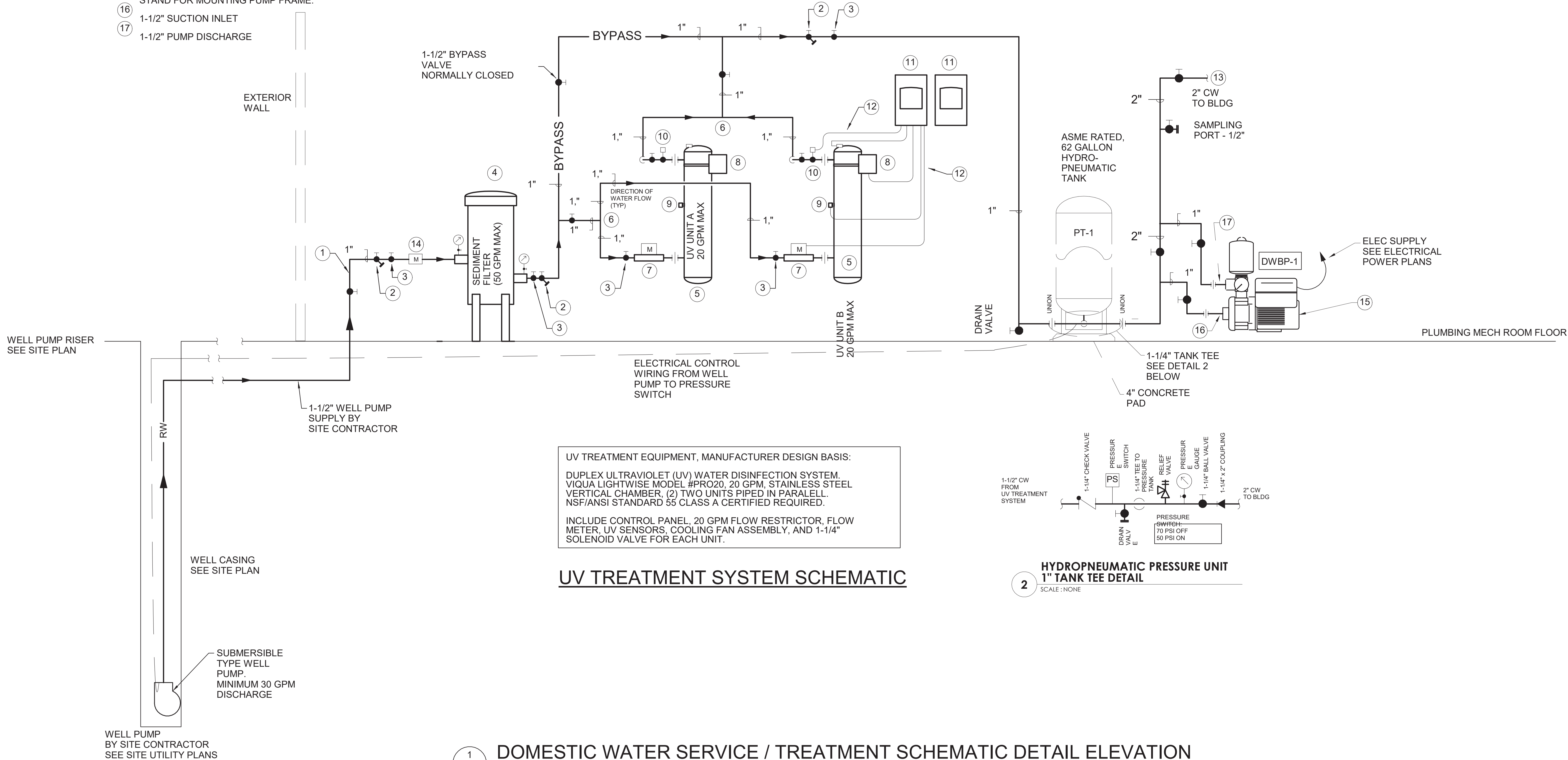
UV TREATMENT UNITS ARE REQUIRED TO MEET  
NSF STANDARD 61 AND STANDARD 55 CLASS A,  
PER NYS DEPT. OF HEALTH.  
FOR SCHEMATIC OF WATER  
FLOW  
THRU EQUIPMENT SEE DETAIL

BOOSTER PUMP SCHEDULE

TAG NO.	LOCATION	SERVICE	PUMP DATA			MOTOR DATA			REFERENCE MANUFACTURER AND REMARKS
			TYPE	GPM	TDH FT.	HP	RPM	POWER	
DWBP-1	DOWNSTREAM OF WATER METER	CW	END SUCTION PRESSURE BOOSTER	54.2	80	2	VSD	208	GRUNDFOS COMPACT BOOSTER PACKAGE MODEL NO. CMBE 10-54-I-U-C-E-D-G VARIABLE SPEED DRIVE WITH PUMP MOUNTED PRESSURE TANK

PRESSURE TANK SCHEDULE

TAG NO.	LOCATION	SERVICE	MAXIMUM SYSTEM PRESSURE (PSI)	TANK VOLUME (GALS.)	ACCEPTANCE VOLUME FACTOR	MANUFACTURER AND REMARKS
PT-1	WATER SERVICE	DOMESTIC COLD WATER	150	62	0.55	WELLXTROL MODEL NO. WX-251. 1-1/4" IPS CONNECTION



Mechanical/Electrical Engineering Consultants

Capital District | Rochester | Buffalo | Syracuse

433 STATE STREET, 4TH FLOOR  
SCHENECTADY, NY 12305

518.533.2171  
www.meengineering.com

REVISIONS:

NUM.	DATE	DESCRIPTION

100% BID DOCUMENTS

KEY PLAN

25 WALLKILL AVE • MONTGOMERY • NY 12549  
O. 845.294.2724 | F. 888.305.6442  
WWW.ADGARCHITECT.COM  
CONTACT@ADGARCHITECT.COM

ARCHITECTURE • PLANNING • INTERIORS

Project: TOWN OF MONTGOMERY POLICE STATION  
110 BRACKEN ROAD, MONTGOMERY,  
NEW YORK 12549

Drawing: DETAILS



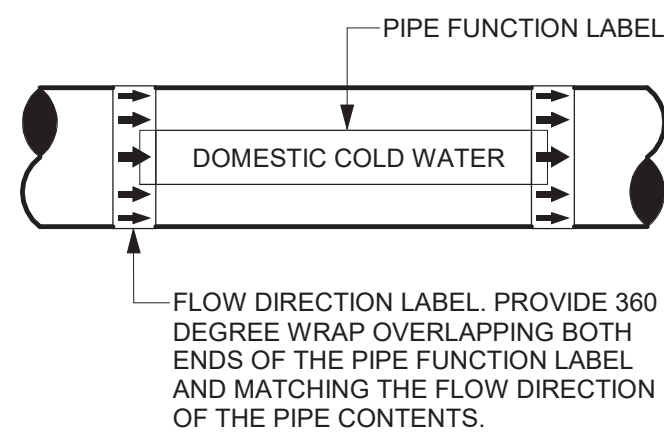
Project: 23138 Date: 02/24/25

Drawn: CES Scale: AS NOTED

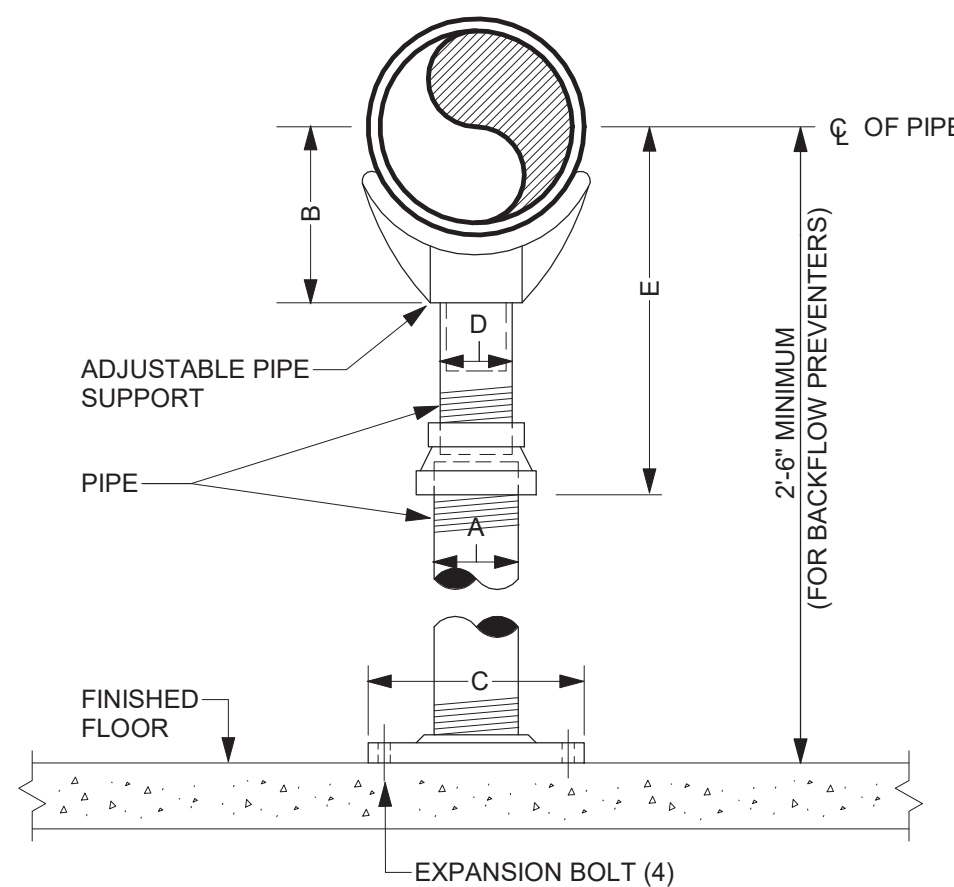
Drawing Number:

P-501

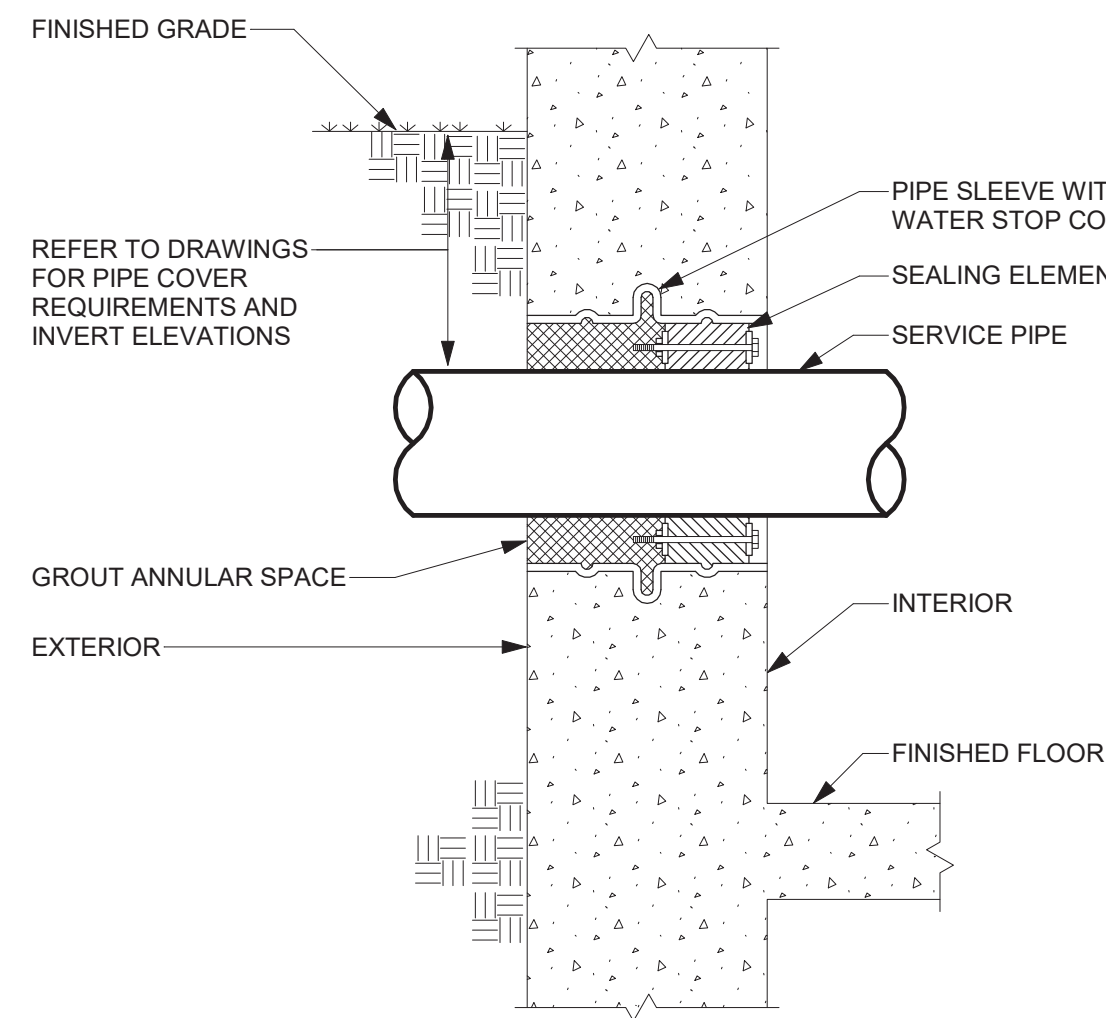




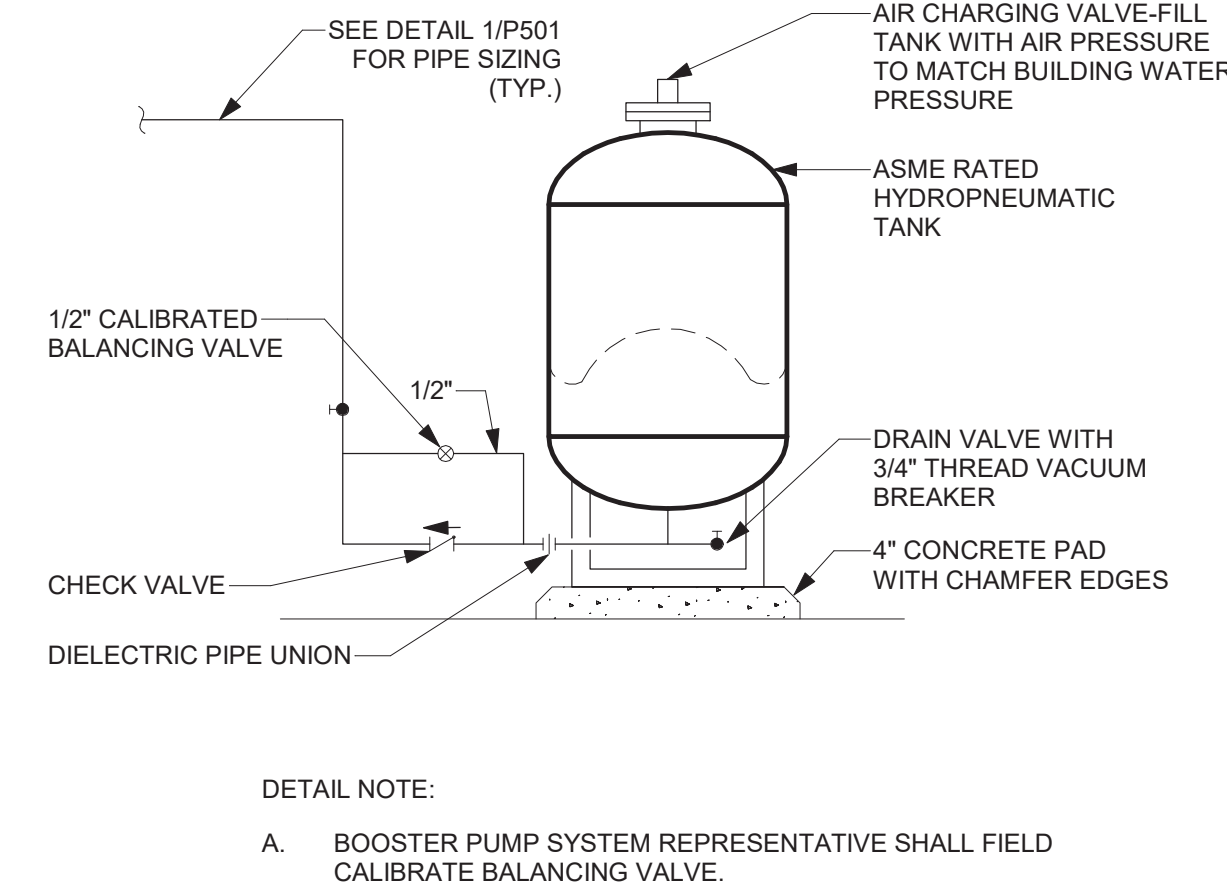
PIPE SIZE	A	B	C	D	DIMENSION E	
					MINIMUM	MAXIMUM
4"	3"	4 3/16"	9"	2 1/2"	9 1/4"	1'-2"
6"	3"	5 7/16"	9"	2 1/2"	10 1/2"	1'-3 1/4"
8"	3"	6 15/16"	9"	2 1/2"	11 3/4"	1'-4 1/2"



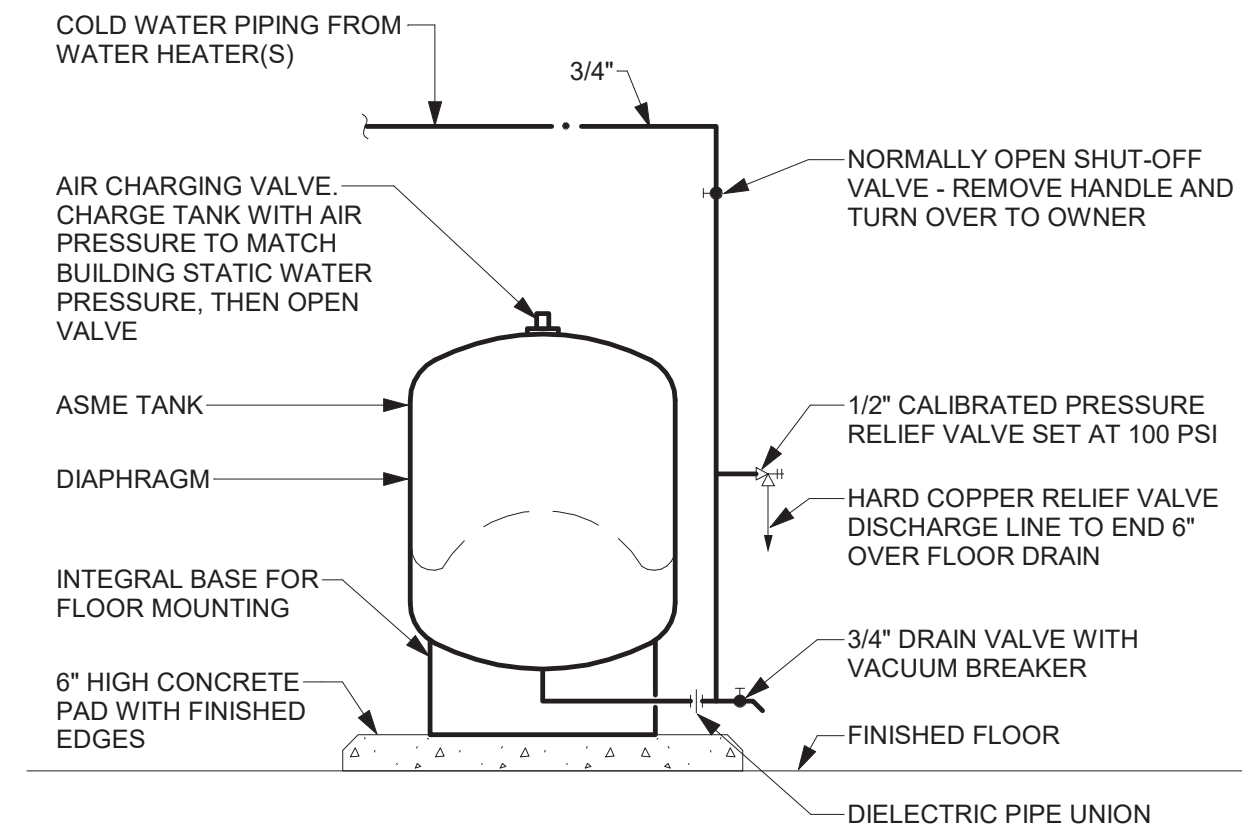
2 ADJUSTABLE PIPE SUPPORT DETAIL  
NOT TO SCALE



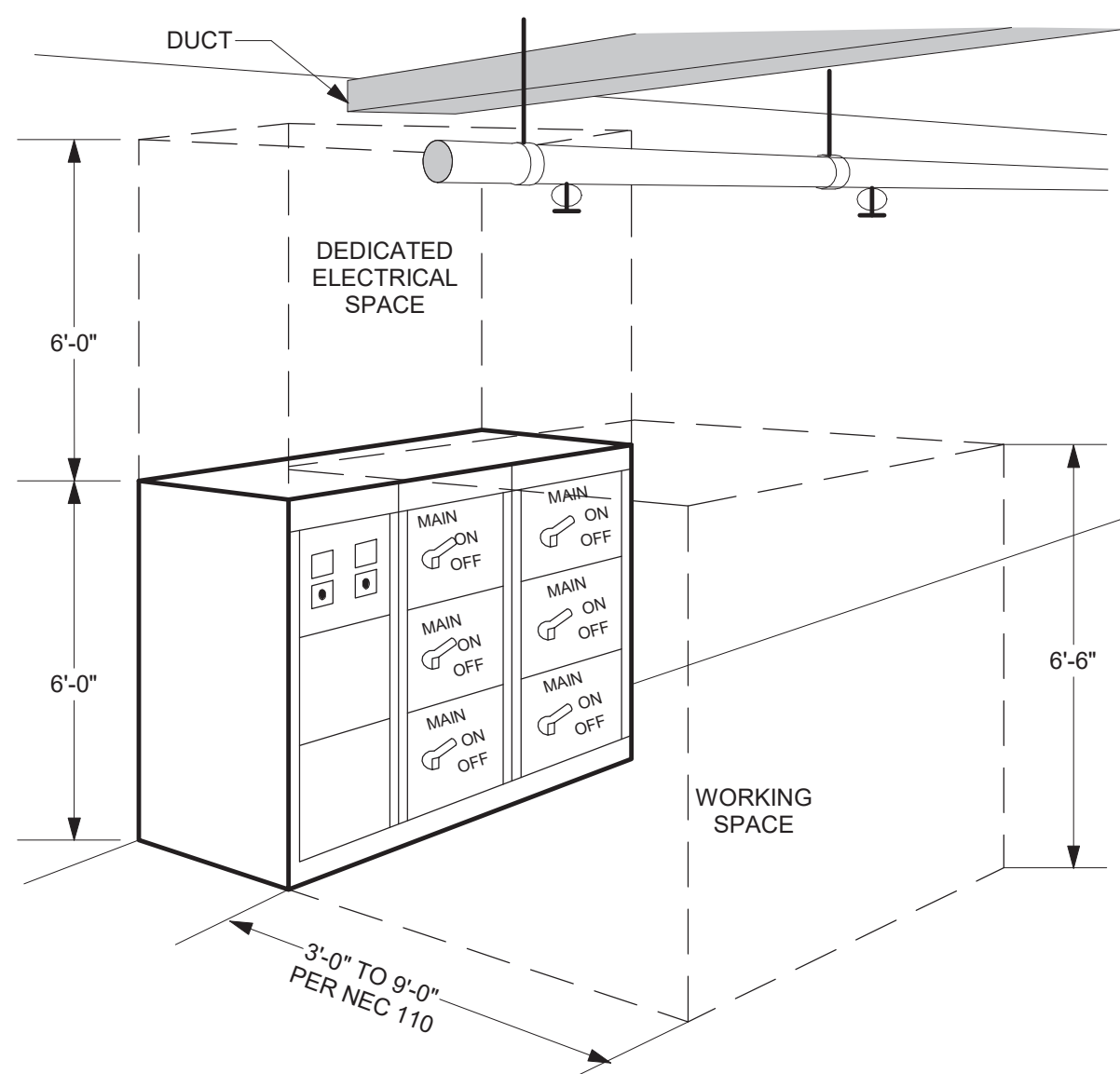
3 PIPE THRU NEW EXTERIOR WALL DETAIL  
NOT TO SCALE



4 HYDROPNEUMATIC TANK DETAIL  
NOT TO SCALE

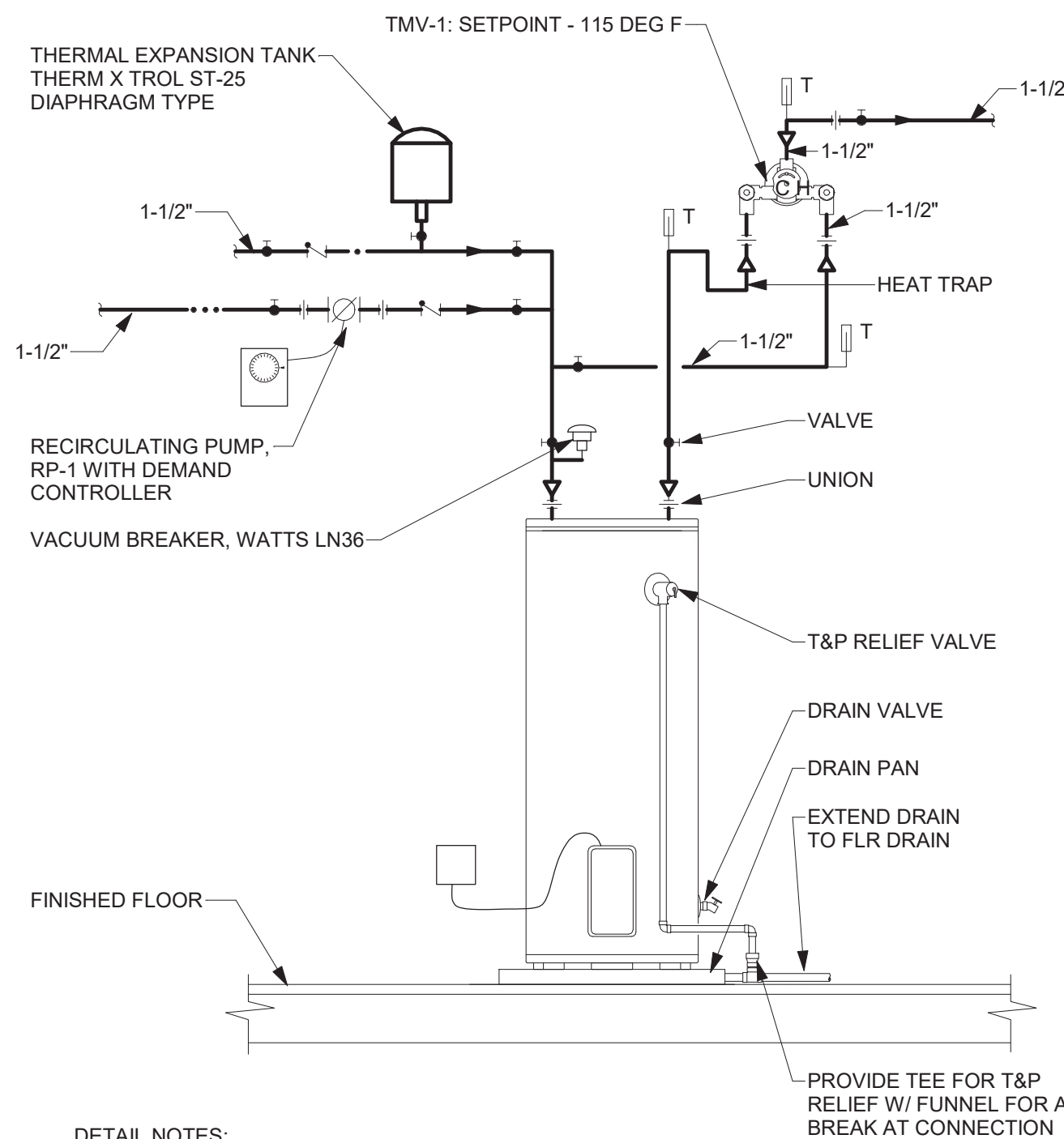
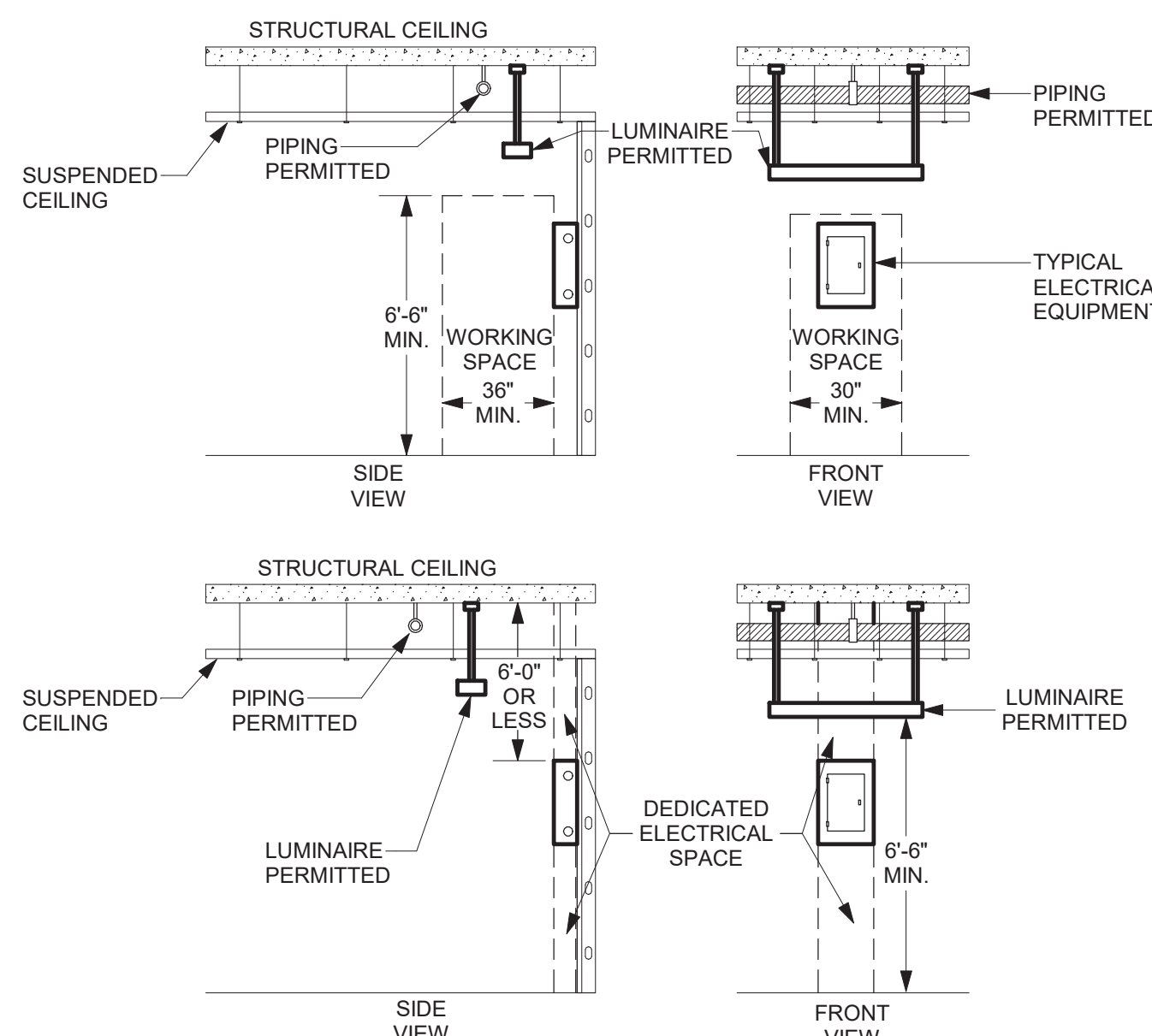


5 THERMAL EXPANSION TANK DETAIL  
NOT TO SCALE



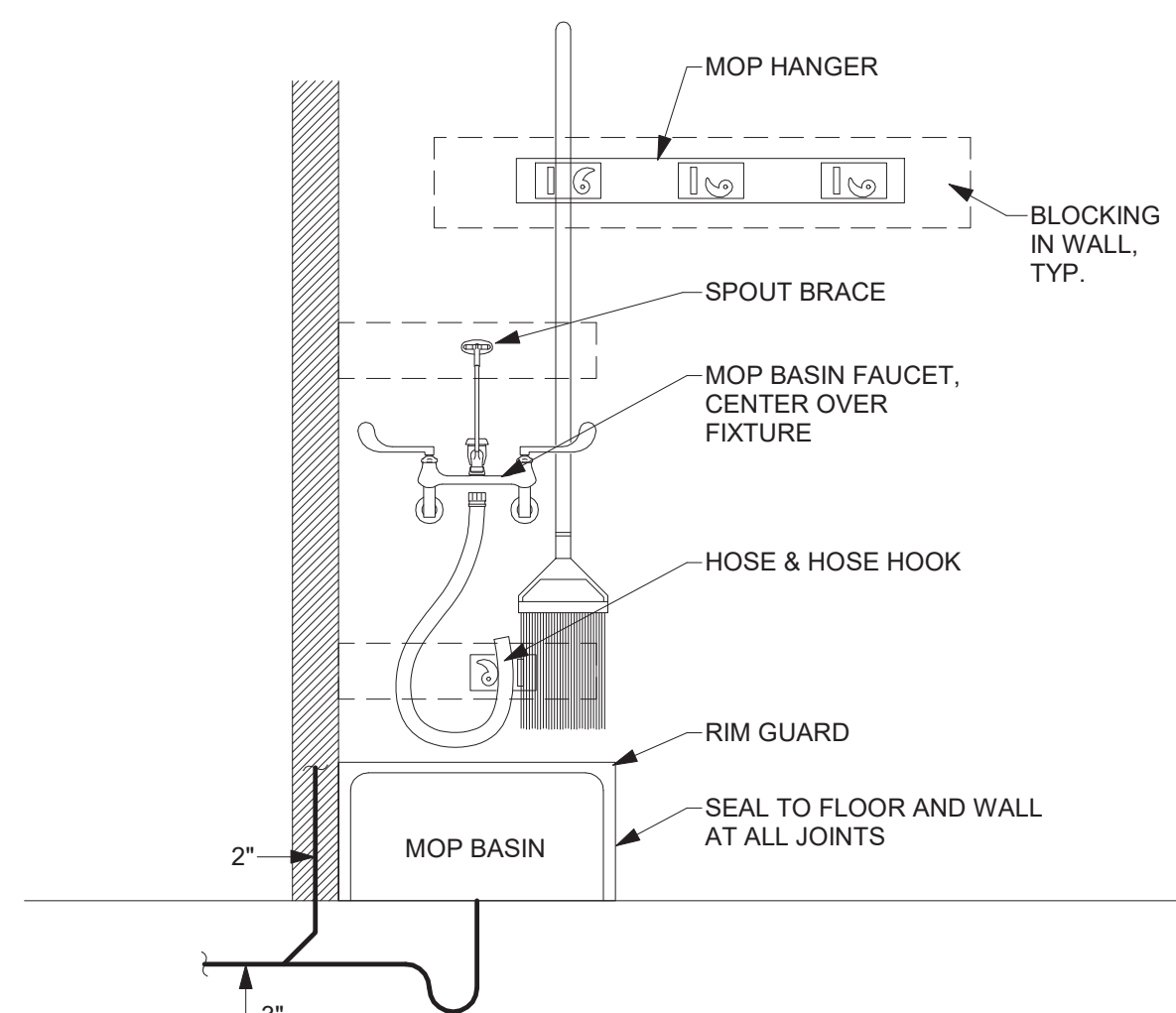
- DETAIL NOTES:
- ELECTRICAL EQUIPMENT INCLUDES PANELS, TRANSFORMERS, DISCONNECTS, STARTERS, MOTOR CONTROL CENTERS, SWITCHGEAR, ADJUSTABLE SPEED DRIVES, AND FUSED SWITCHES (THIS ALSO APPLIES TO ELECTRICAL GEAR MOUNTED DIRECTLY ON MECHANICAL EQUIPMENT).
  - DEDICATED ELECTRICAL SPACE IS DEFINED BY NEC 110.
  - NO PIPING OR DUCTWORK MAY BE INSTALLED IN DEDICATED ELECTRICAL SPACE OR WORKING SPACE.

6 PIPING OVER ELECTRICAL EQUIPMENT DETAIL  
NOT TO SCALE



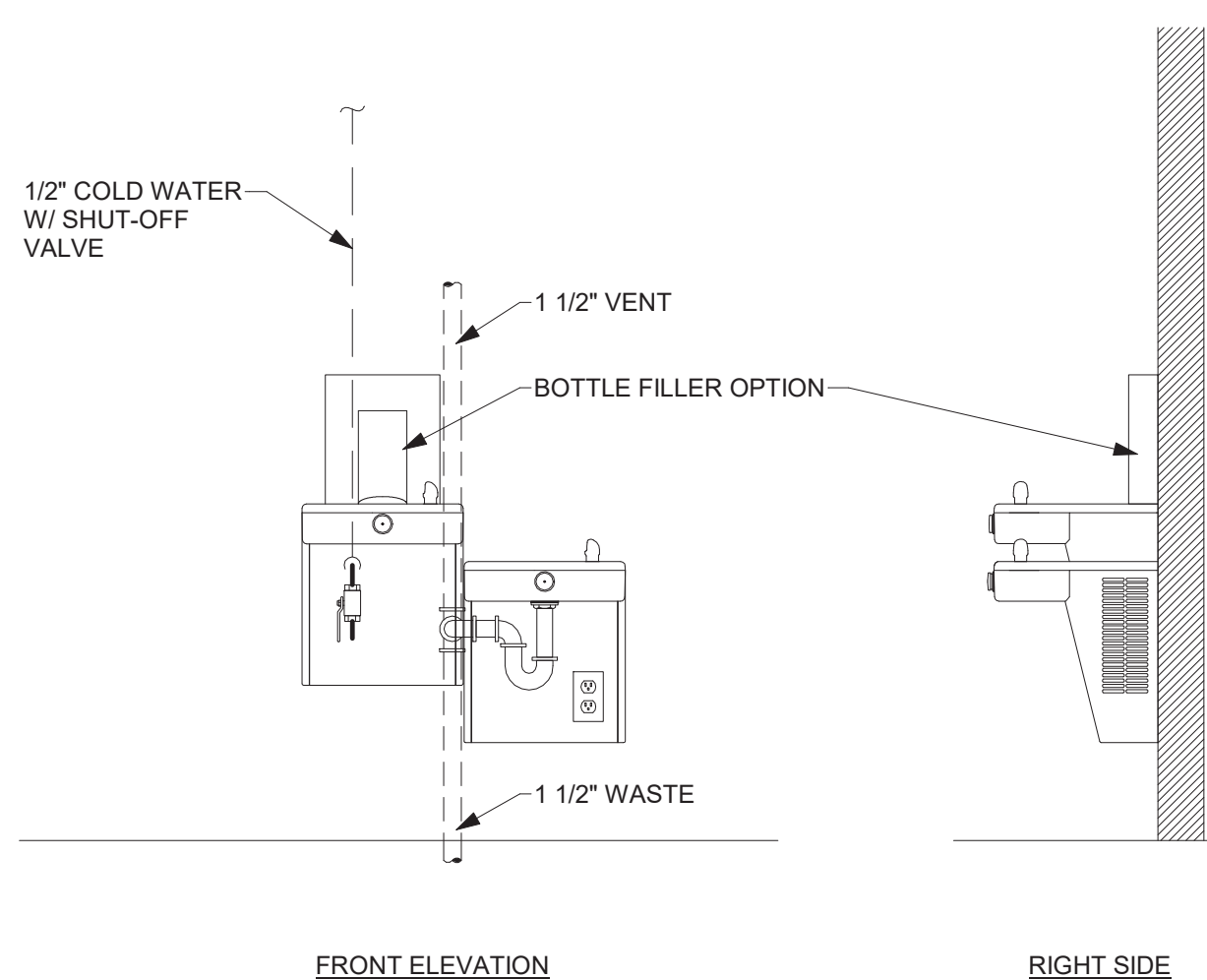
- DETAIL NOTES:
- P.C. IS RESPONSIBLE FOR FINAL CONNECTIONS
  - THIS DETAIL IS GENERIC. WATER HEATER MFRS. INSTRUCTIONS ARE TO BE FOLLOWED WHERE THEY DIFFER FROM THESE INSTRUCTIONS.
  - INSTALL VACUUM BRKR ON CW LINE ABOVE HIGHEST POINT ON TANK

7 WATER HEATER DETAIL - ELECTRIC WITH MIXING VALVE  
NOT TO SCALE



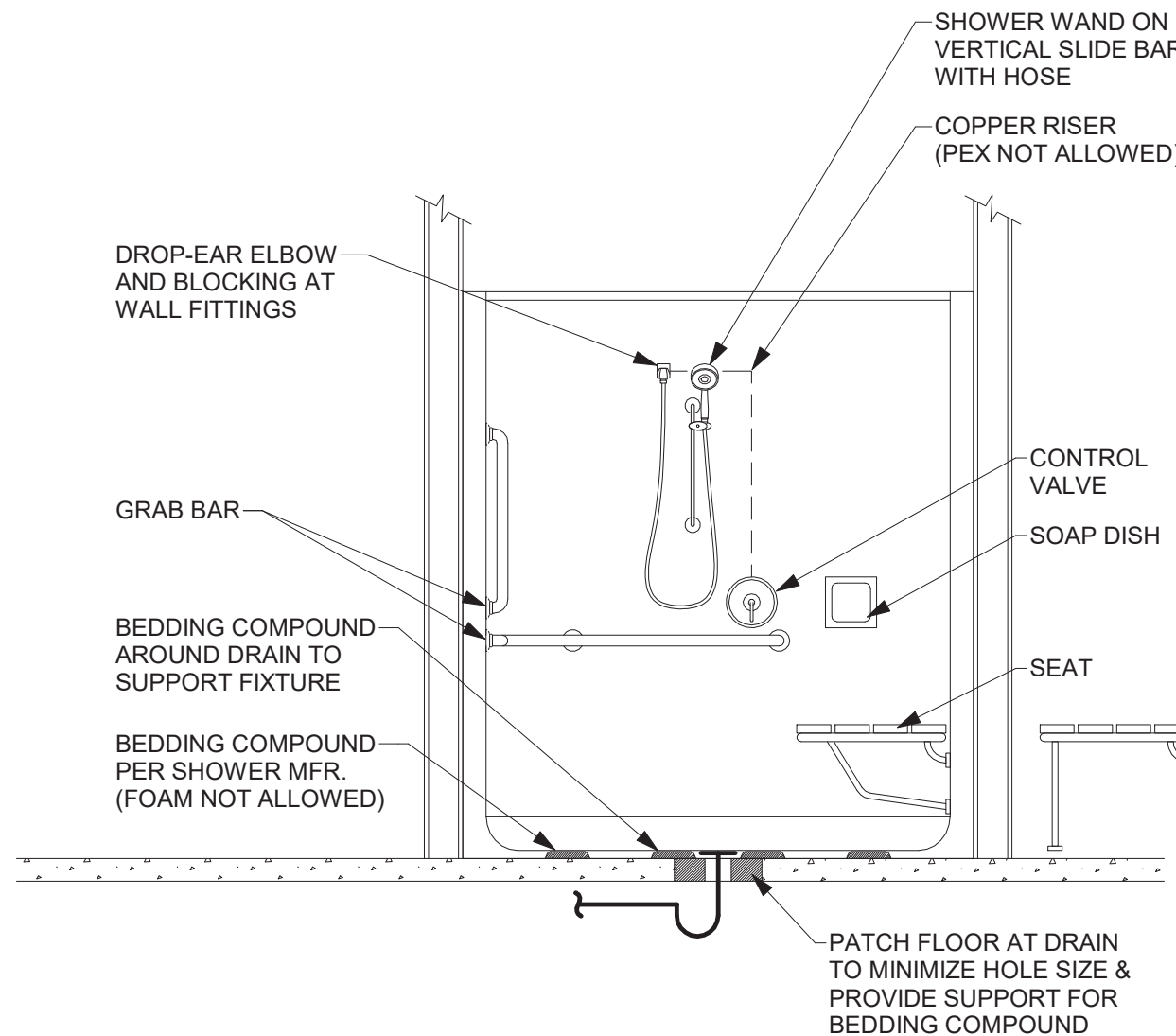
- DETAIL NOTES:
- PROVIDE RIM GUARDS ON ALL EXPOSED MOP BASIN EDGES
  - SERVICE SINK FAUCET SHALL HAVE VACUUM BREAKER, PAIL HOOK, SPOUT BRACE, 3/4" HOSE THREAD OUTLET
  - PROVIDE OPTIONS:  
1. 5' LONG RUBBER HOSE, 1" FITTING WITH HOSE HOOK  
2. MOP HANGER, 3" WIDE, S.S., WITH 3 RUBBER TOOL GRIPS

8 MOP BASIN DETAIL  
NOT TO SCALE



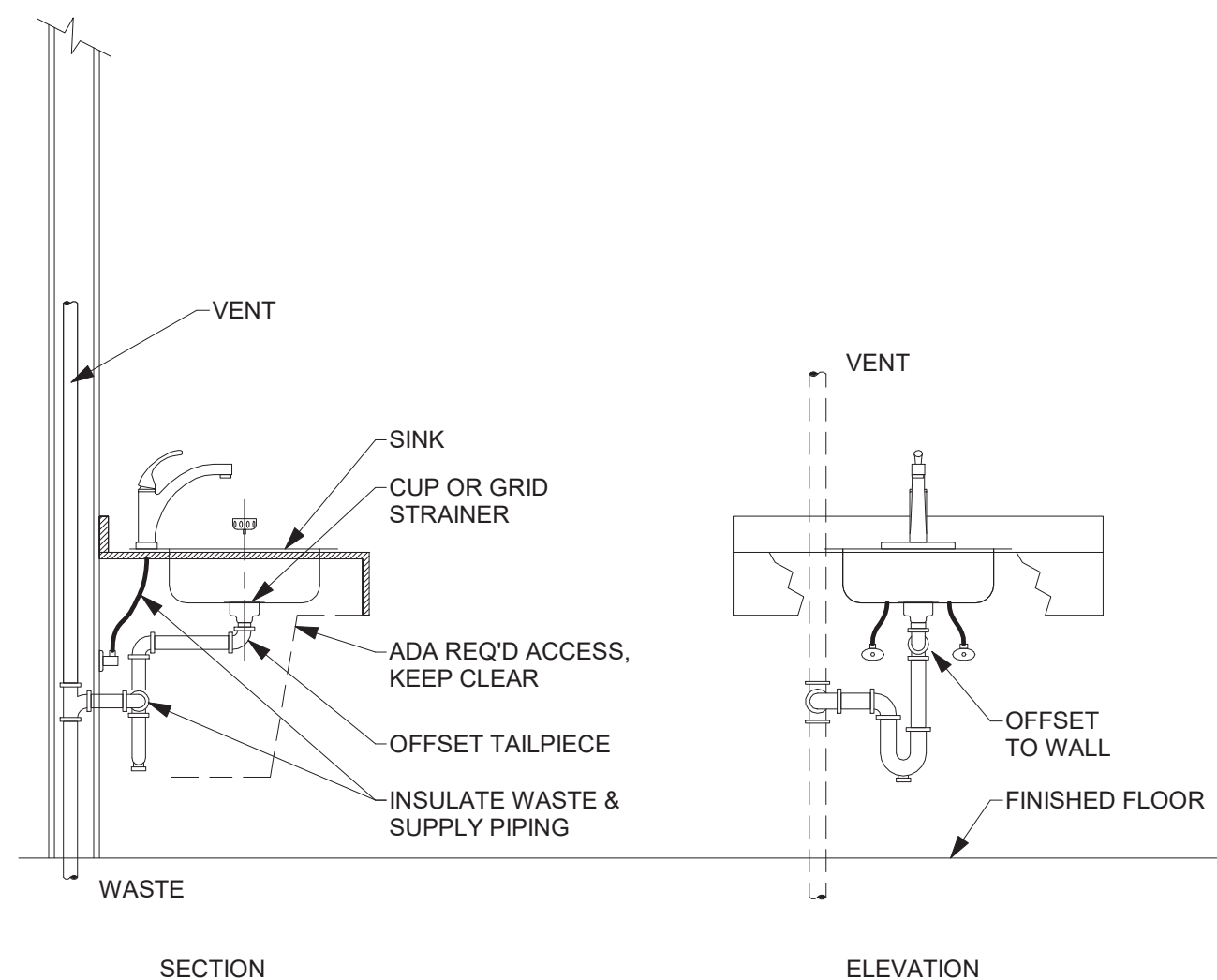
- DETAIL NOTES:
- COORDINATE PIPING WITH ELECTRICAL OUTLET LOCATION
  - CONFIRM TRAP QUANTITY AND ARRANGEMENT WITH EQUIPMENT MFR.
  - WHEN PROVIDING BOTTLE FILLER OPTION PROVIDE PVC TRAP FOR ELECTRICAL ISOLATION PER MFR.

9 BI-LEVEL WATER COOLER, ADA WITH BOTTLE FILLER - SURFACE MOUNTED  
NOT TO SCALE



- DETAIL NOTES:
- FITTING LOCATIONS TO BE PER ARCHITECTURAL DWGS. I.E. SHOWER BAR WITH WAND, VALVE, SOAP DISH
  - PROVIDE FLOOR DRAIN IN FRONT OF SHOWER
  - SEE SPECIFICATIONS FOR SHOWER ACCESSORIES
  - SET SHOWER VALVE TEMPERATURE STOP FOR 120°F MAXIMUM.

10 SHOWER INSTALLATION DETAIL - ADA TRANSFER WITH SEAT & BACKWALL HEAD  
NOT TO SCALE



- DETAIL NOTES:
- PROVIDE ESCUTCHEON AT EACH WALL PENETRATION.
  - P-TRAP SHALL BE INSTALLED TIGHT TO WALL, AND PARALLEL TO WALL AS SHOWN.
  - WHERE PIPING IS COVERED BY A KNEE SHIELD PIPE INSULATION MAY BE OMITTED.

11 SINK INSTALLATION DETAILS - EXPOSED PIPING - ADA  
NOT TO SCALE

## ME ENGINEERING

Mechanical/Electrical Engineering Consultants

Capital District | Rochester | Buffalo | Syracuse

433 STATE STREET, 4TH FLOOR  
SCHENECTADY, NY 12305

518.533.2171  
www.meengineering.com

### REVISIONS:

NUM.	DATE	DESCRIPTION

### 100% BID DOCUMENTS

PROJECT

KEY PLAN

ADG ARCHITECTS

25 WALLKILL AVE • MONTGOMERY • NY 12549  
O. 845.294.2724 | F. 888.305.6442  
WWW.ADGARCHITECT.COM  
CONTACT@ADGARCHITECT.COM

ARCHITECTURE • PLANNING • INTERIORS

Project: TOWN OF MONTGOMERY POLICE STATION  
110 BRACKEN ROAD, MONTGOMERY,  
NEW YORK 12549

Drawing: DETAILS



Project: 23138 Date: 02/24/25

Drawn: CES Scale: AS NOTED

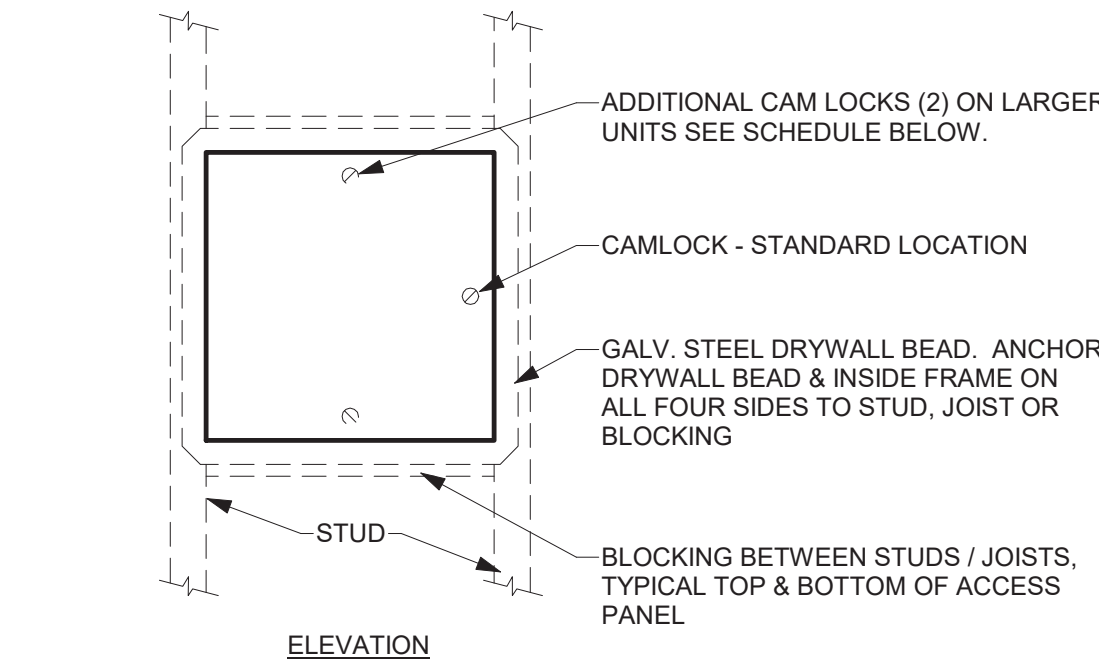
Drawing Number:

P-502



ACCESS PANELS - STANDARD SIZES			
DOOR SIZE	ROUGH OPENING SIZE	NO. OF CAMS	STUD SPACING
8 x 8	8 1/2 x 8 1/2	1	10" O.C.
10 x 10	10 1/2 x 10 1/2	1	12" O.C.
14 x 14	14 1/2 x 14 1/2	1	16" O.C.
22 x 22	22 1/2 x 22 1/2	3	24" O.C.
24 x 24	24 1/2 x 24 1/2	3	26" O.C.

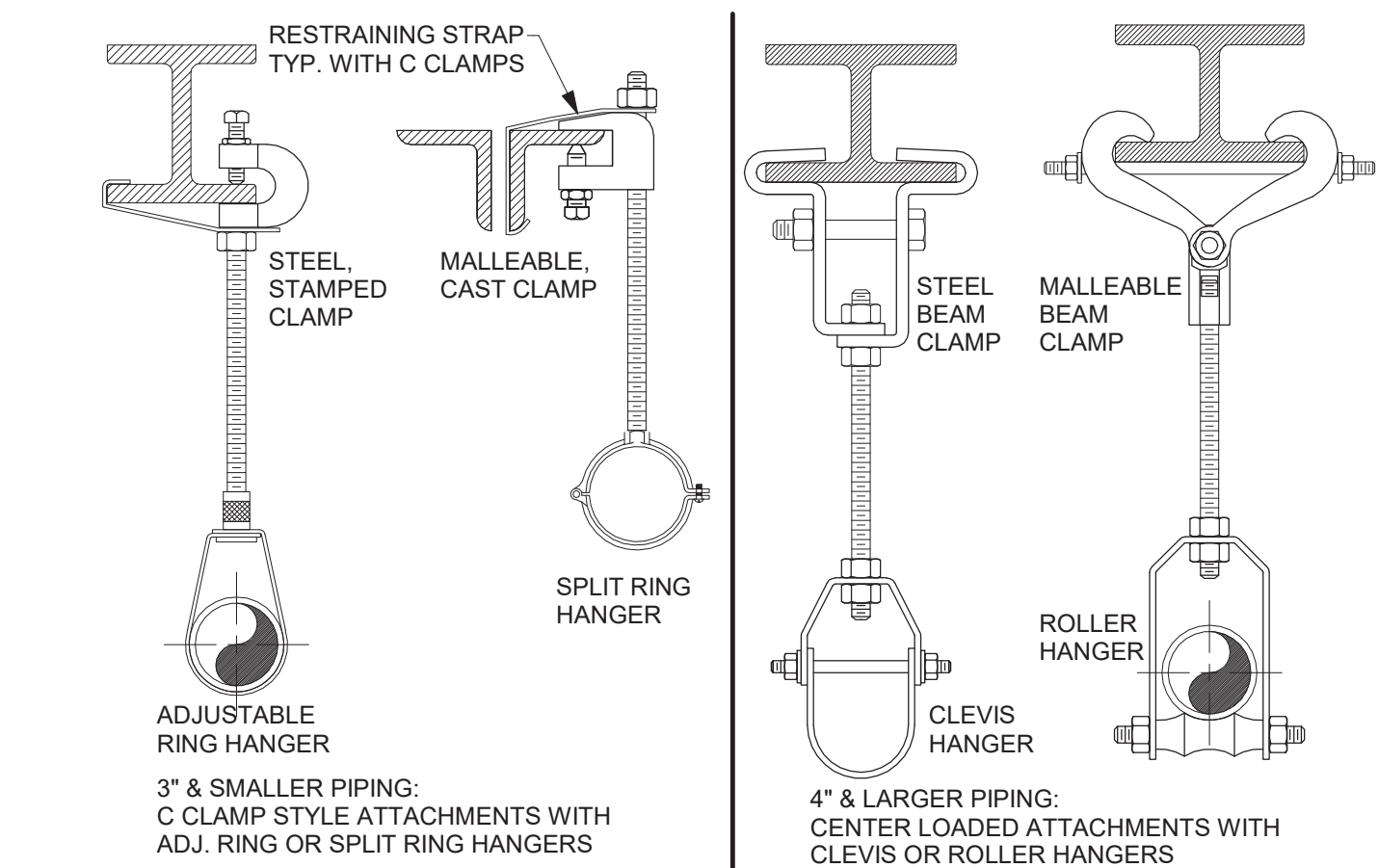
- NOTES:
- SIZES BASED ON MILCOR MODEL DW SERIES
  - ADD 2 INCHES TO DOOR SIZE FOR DIMENSIONS W/ PLASTER FLANGE
  - DOOR IS 16 GAUGE STEEL W/ POWDER COAT RIMMER



- DETAIL NOTES:
- ANCHOR PLASTER FLANGE AND INTERIOR FRAME TO STRUCTURE PER MFR
  - PROVIDE BLOCKING WHERE THERE IS NO STRUCTURAL MEMBER TO ANCHOR FLANGE OR INTERIOR FRAME
  - DESIGN BASIS:  
MILCOR - MODEL DW W/ PLASTER FRAME (SHOWN ABOVE)  
MILCOR - MODEL UFRAD FIRE RATED W/ TRIM FRAME (KEY LOCK OPTIONAL)

#### 1 ACCESS PANEL DETAIL - FLUSH WITH GYP BOARD WALL/CEILING

NOT TO SCALE

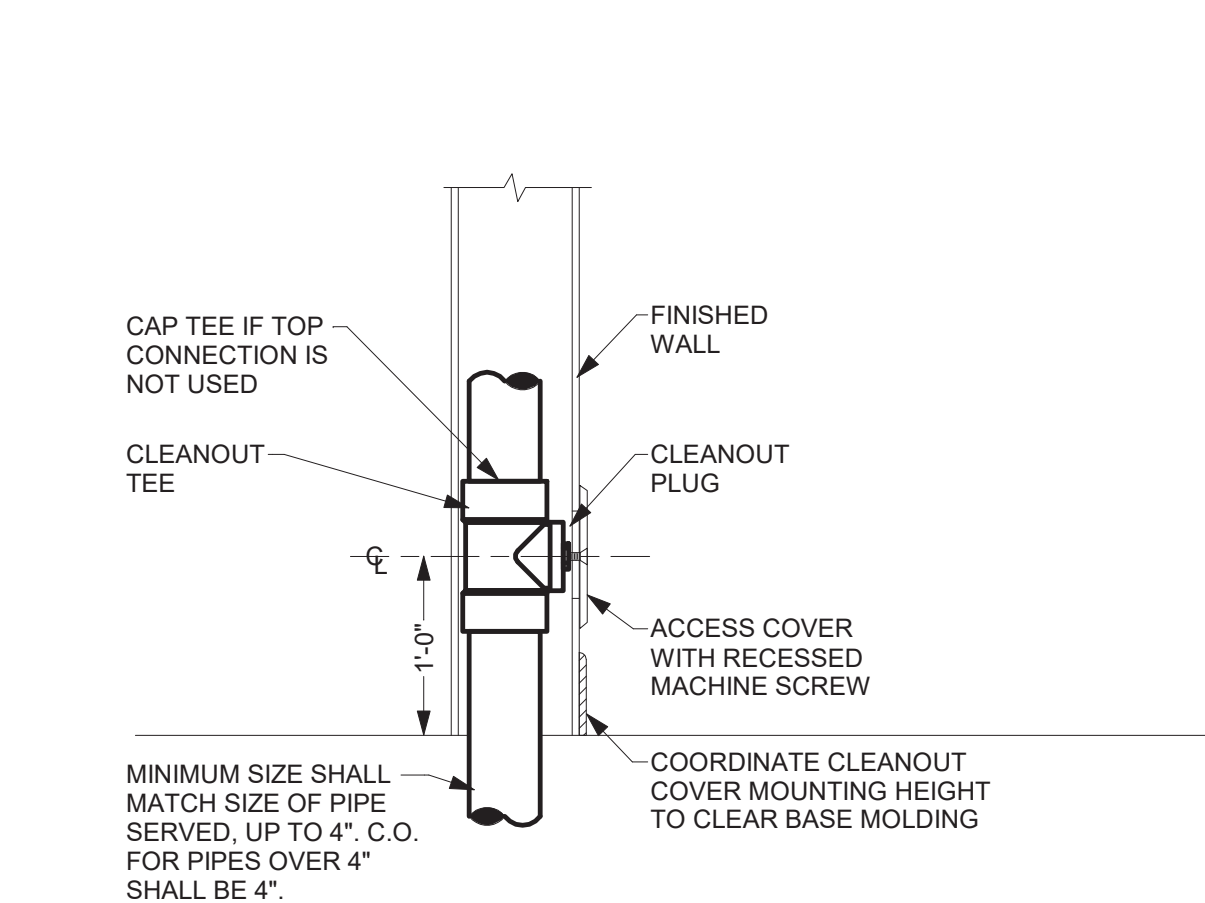


PIPE SIZE	SCHEDULE				ROD SIZE
	STEEL	COPPER	PLASTIC	CAST IRON	
3/4" TO 1"	8 FT.	6 FT.	3 FT.	EACH HORIZONTAL J.T. 5 FT.	3/8 IN.
1 1/4" TO 2"	10 FT.	6 FT.	3 FT.	MAXIMUM SPACING	3/8 IN.
2 1/2" TO 4"	12 FT.	10 FT.	4 FT.		1/2 IN.
5" TO 6"	12 FT.	10 FT.	4 FT.		5/8 IN.
8"	12 FT.	10 FT.	4 FT.		3/4 IN.
OVER 8"	TO SUIT LOADING CONDITIONS				

- DETAIL NOTES:
- HORIZONTAL PIPING
  - SUPPORT WITHIN 18 INCHES OF EACH COUPLING JOINT FOR 10 FT. PIPE LENGTHS
  - SUPPORT AT 5 FT. INTERVALS FOR 5 FT. PIPE LENGTHS
  - 4 INCH AND LARGER PIPE - BRACE AT CHANGES IN DIRECTION TO PREVENT HORIZONTAL MOVEMENT
  - INSTALLATIONS REQUIRING MULTIPLE JOINTS WITHIN A FOUR FOOT DEVELOPED LENGTH SHALL BE SUPPORTED AT EVERY OTHER OR ALTERNATING COUPLINGS, FINISHES
  - TYPICAL - ELECTROPLATED ZINC OR CADMIUM FINISH
  - COPPER PIPING, UNINSULATED - COPPER PLATED OR PVC COATED
  - EXTERIOR & WET LOCATIONS, HOT DIPPED GALVANIZED HARDWARE & HANGERS

#### 5 PIPE HANGER AND SPACING DETAILS - STEEL STRUCTURE

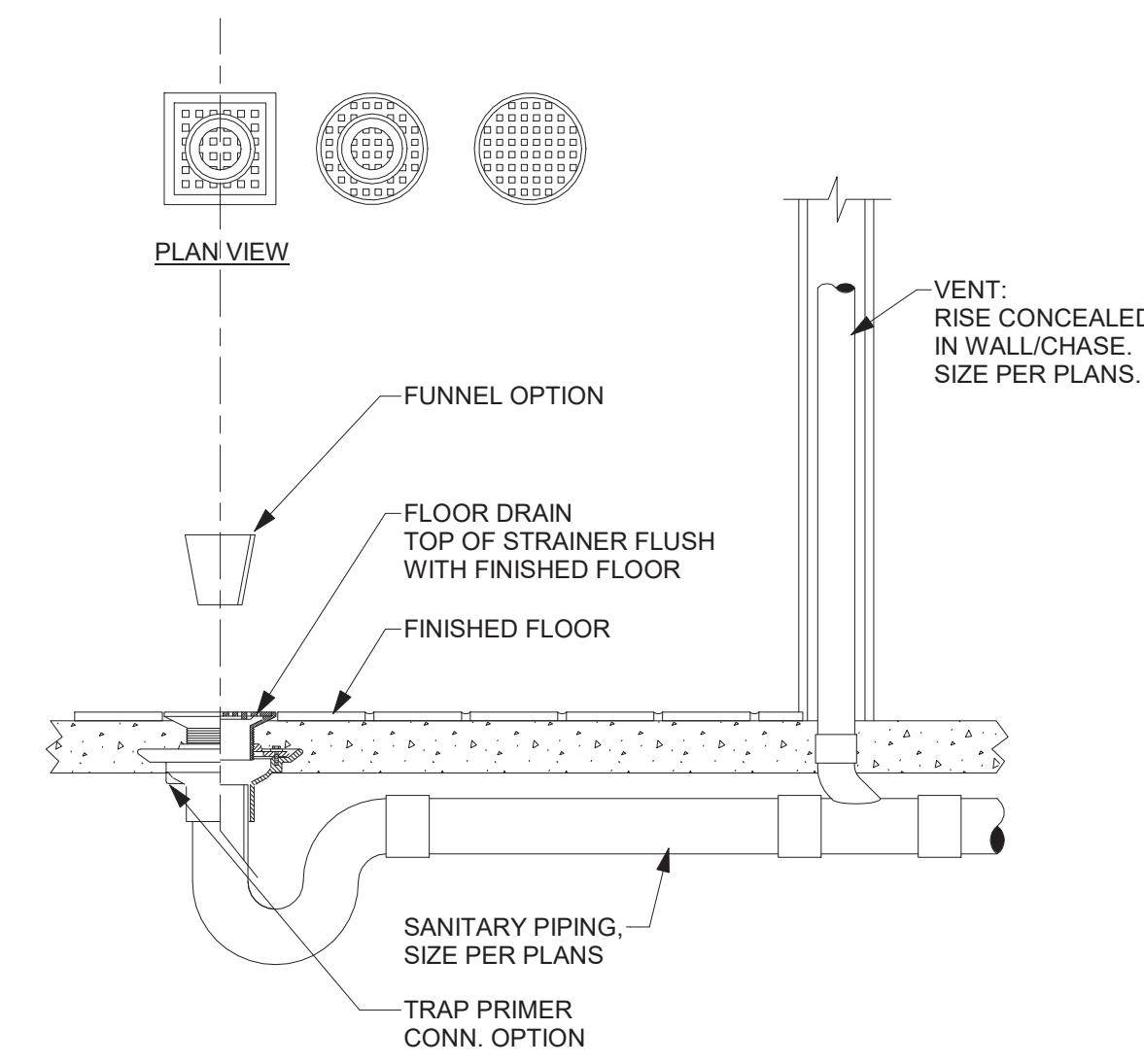
NOT TO SCALE



- DETAIL NOTES:
- ALL CLEANOUTS SHALL BE WALL PLATE TYPE AS SHOWN UNLESS NOTED OTHERWISE ON PLANS.
  - PROVIDE THICKENED WALL OR CHASE WHERE REQUIRED TO CONCEAL STACK / CONDUCTOR
  - APPROXIMATE CLEANOUT CENTERLINE SHOWN ABOVE.

#### 8 WALL CLEANOUT DETAIL

NOT TO SCALE

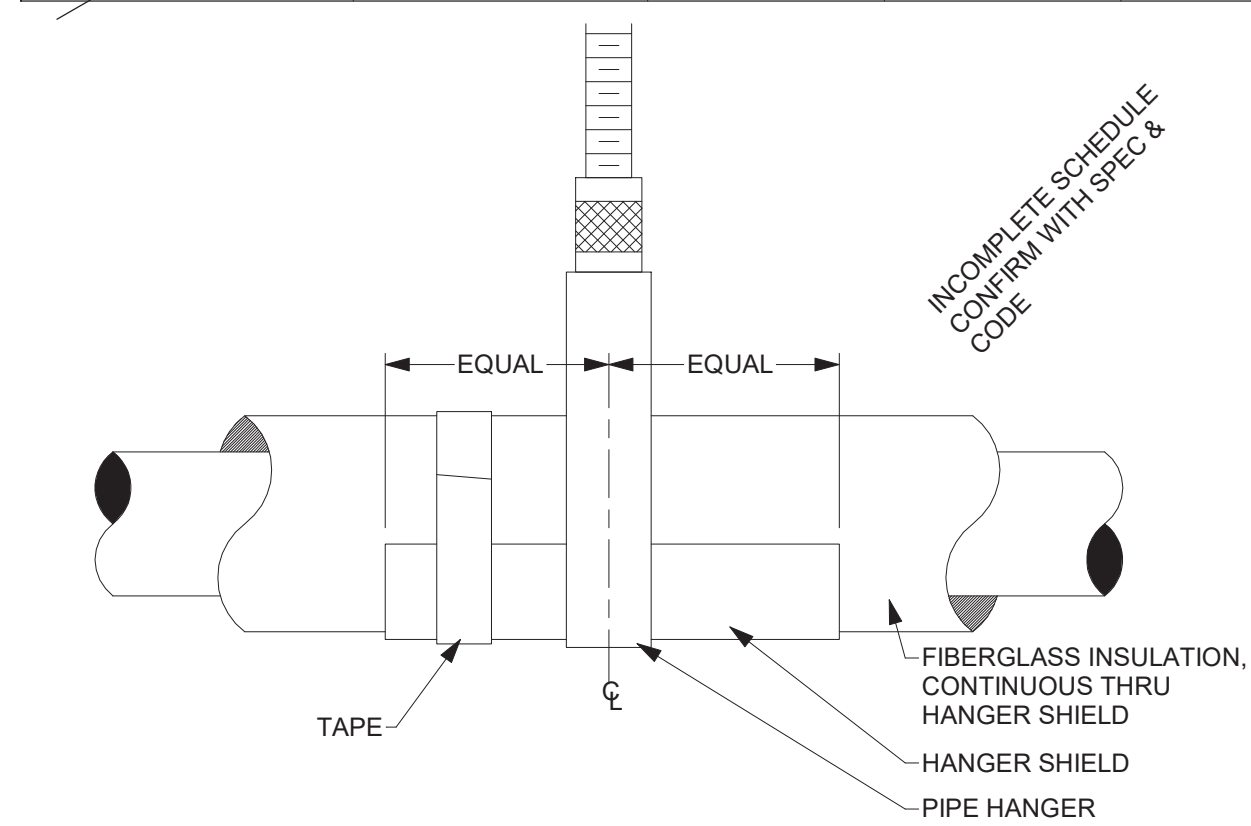


- DETAIL NOTES:
- PROVIDE TRAP GUARD FITTING.
  - SEE SPECIFICATIONS FOR: GRATE PATTERN - ROUND, SQUARE OPTIONS - FUNNEL, TRAP PRIMER CONNECTION
  - SEE ARCHITECTURAL PLANS FOR FLOOR FINISHES AND SLOPES
  - DESIGN BASIS: J.R. SMITH #2005, 2010 ROUND OR SQUARE TOP, NICKEL BRONZE RIM AND ADJUSTABLE STRAINER

#### 2 FLOOR DRAIN DETAIL

NOT TO SCALE

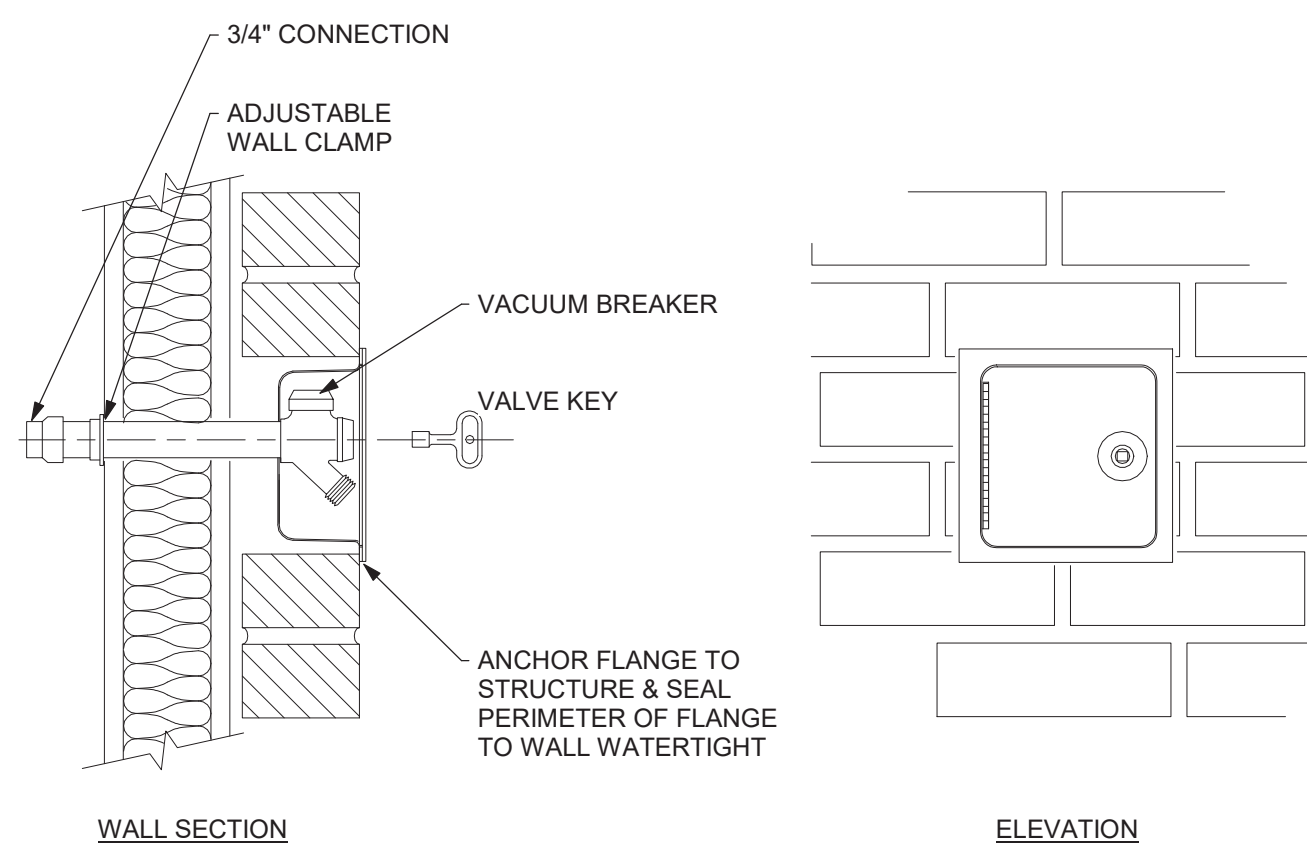
INSULATION SCHEDULE				
SERVICE	PIPE DESCRIPTION	INSULATION		NOTES
		MATERIAL	THICKNESS	
COLD WATER	3 IN. & SMALLER	GLASS FIBER	1/2 INCH	NOTE 1
COLD WATER	4 IN. & LARGER	GLASS FIBER	1 INCH	NOTE 1
HW	ALL SIZES	GLASS FIBER	1 INCH	NOTE 1
HWR	ALL SIZES	GLASS FIBER	1 INCH	NOTE 1
-	ALL SIZES	GLASS FIBER	1/2 INCH	-
-	ALL SIZES	GLASS FIBER	1 INCH	-



- DETAILS NOTES:
- PIPE HANGERS SHALL BE ON THE OUTSIDE OF THE HANGER SHIELDS
  - HANGER SHIELDS SHALL BE 16 GAUGE, GALVANIZED STEEL, 12" LONG x 120" ARC MINIMUM. CENTER SHIELD ON HANGER AND TAPE SHIELD TO INSULATION TO ANCHOR IN PLACE.
  - GLASS FIBER INSULATION - PREFORMED RIGID PIPE COVERING, 4 LB. NOMINAL DENSITY. MAX. THERMAL CONDUCTIVITY (K), OF 0.25 BTU/SQ. FT. HR. 33#64F/IN. AT 7533#64F MEAN TEMP. WHITE KRAFT OUTER BONDED TO ALUMINUM FOIL AND REINFORCED WITH FIBERGLASS YARN. SEAL ALL JOINTS & ENDS

#### 6 PIPE HANGER WITH INSULATED PIPING DETAIL - FIBERGLASS INSULATION

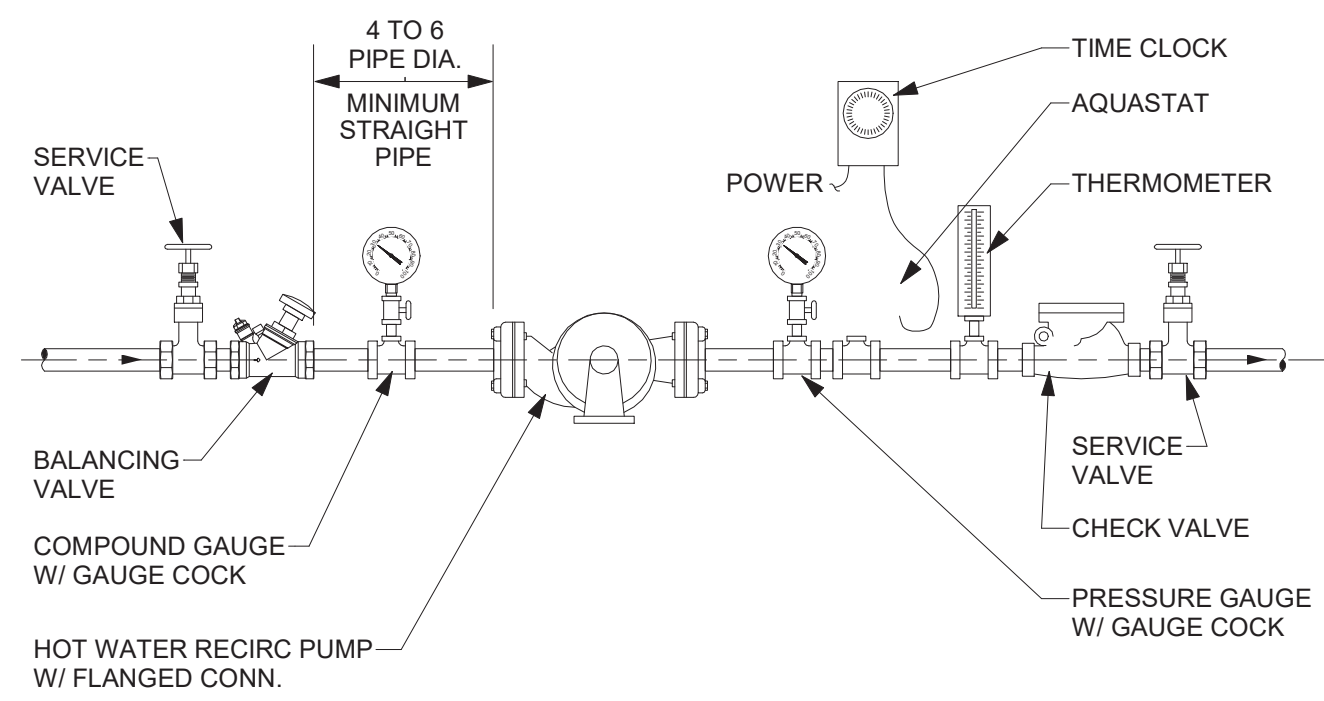
NOT TO SCALE



- DETAIL NOTES:
- KEYLESS FITTING SHOWN. PROVIDE KEYED OR KEYLESS PER SPECIFICATIONS.
  - SEE ARCHITECTURAL PLANS FOR WALL MATERIALS & THICKNESS. WALL HYDRANT CASING LENGTH TO MATCH WALL THICKNESS.
  - PIPE SIZE PER PLANS

#### 9 WALL HYDRANT DETAIL - RECESSED

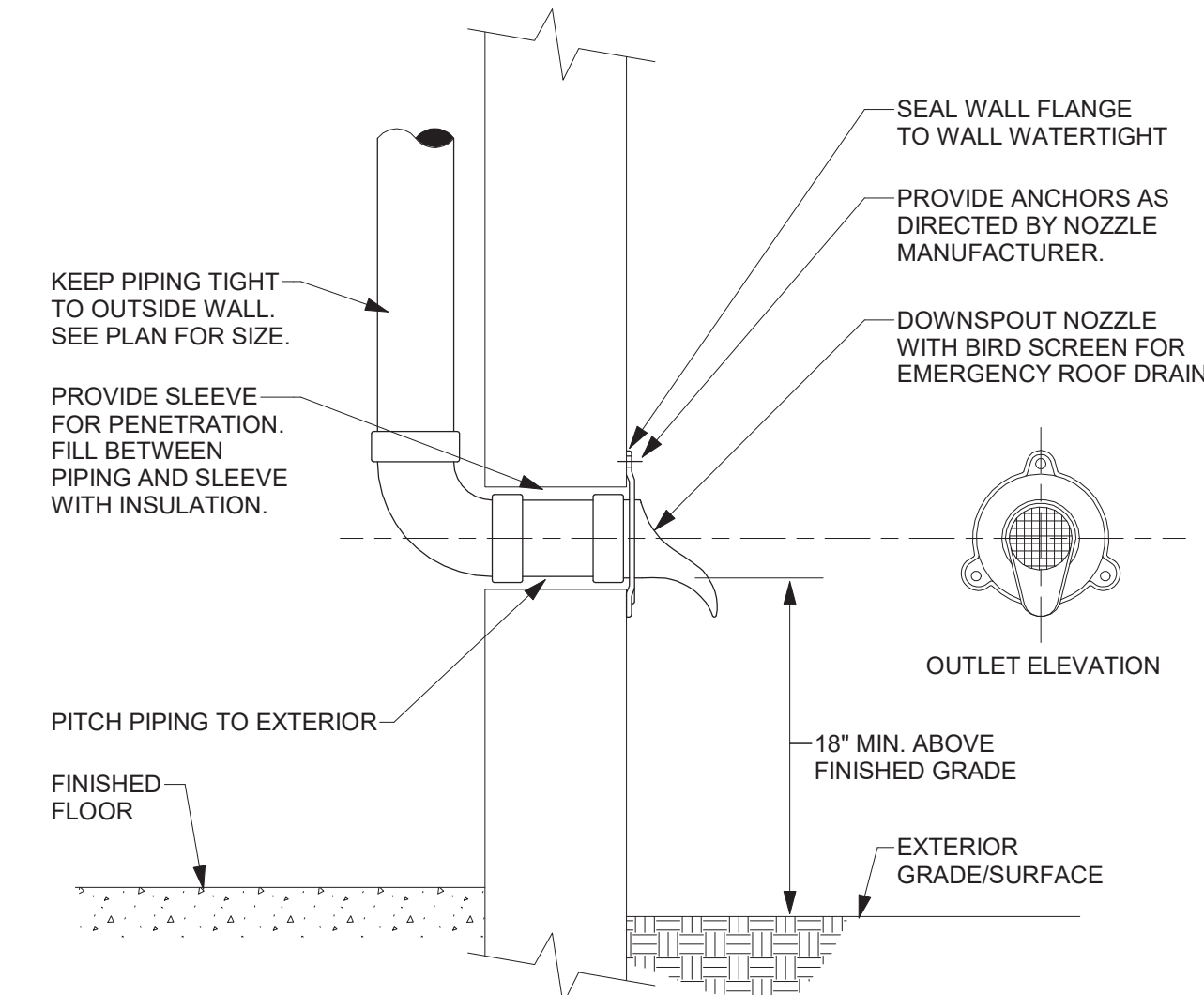
NOT TO SCALE



- DETAIL NOTES:
- PRESSURE GAUGES - SELECT GAUGE RANGE TO PLACE MAXIMUM SYSTEM OPERATING PRESSURE IN MIDDLE ONE THIRD OF RANGE.
  - PROVIDE UNION ON PUMP INLET AND OUTLET IF PUMP IS NOT FLANGED.
  - PROVIDE TAPERED REDUCER AT PUMP INLET & OUTLET IF REQUIRED. DO NOT USE REDUCING FLANGES.
  - INSTALL PUMP WITH SHAFT HORIZONTAL. PIPING MAY BE INSTALLED VERTICAL OR HORIZONTAL DEPENDING ON SITE CONDITIONS.
  - INSTALL CHECK VALVE HORIZONTALLY, OR VERTICALLY WITH FLOW UPWARD.
  - BALANCING VALVE: SET FLOW TO MATCH PUMP DESIGN.

#### 3 HOT WATER RECIRCULATION PUMP DETAIL - HORIZONTAL

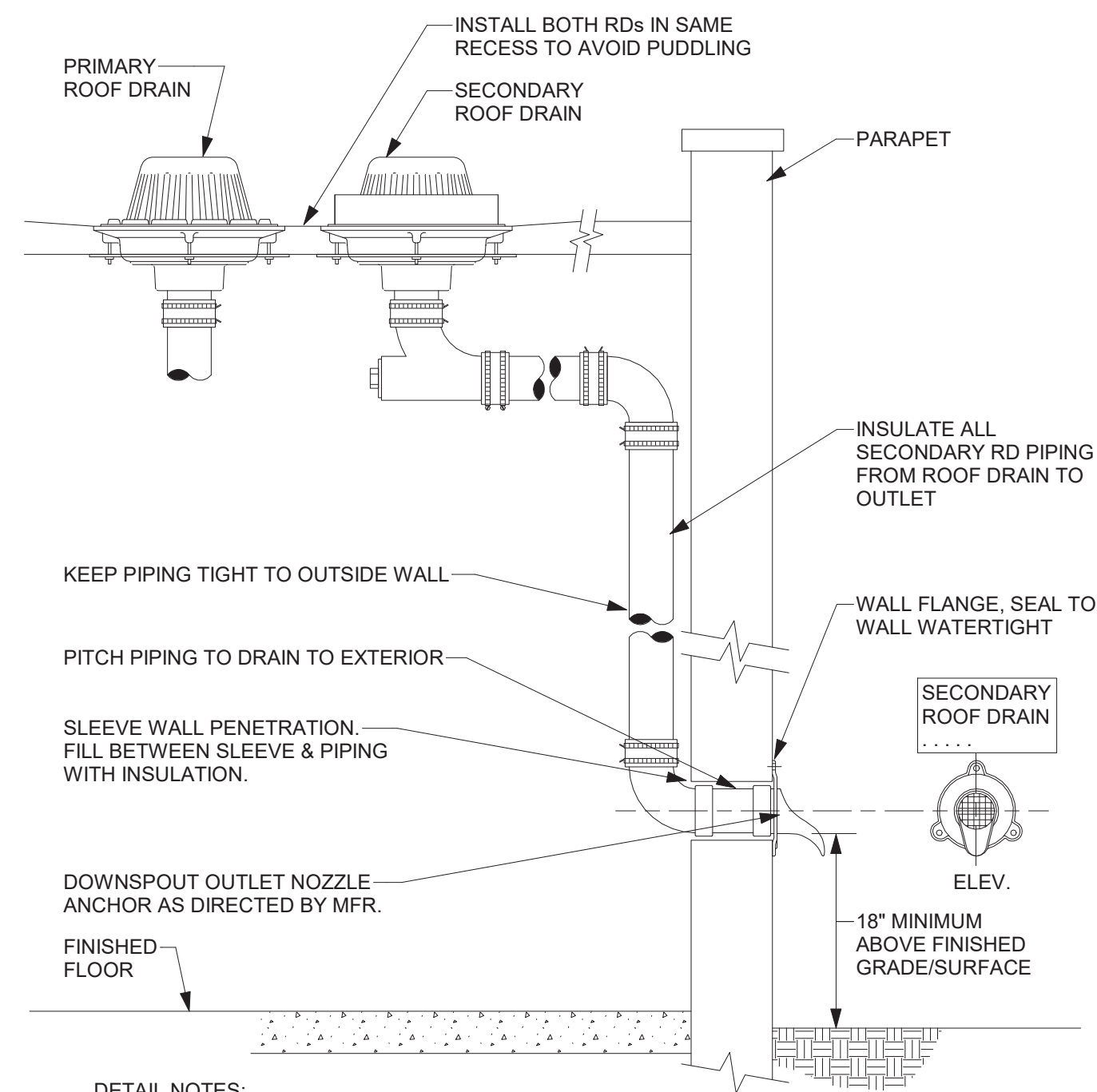
NOT TO SCALE



- DETAIL NOTES:
- OUTLET DESIGN BASIS: JAY R. SMITH #1770 OR ZURN #Z199 BOTH W/ BIRD SCREEN OPTION
  - CONFIRM FINAL LOCATION AND ELEVATION WITH ARCHITECT BEFORE STARTING INSTALLATION OF OUTLETS.

#### 4 SECONDARY ROOF DRAIN OUTLET DETAIL

NOT TO SCALE



- DETAIL NOTES:
- OUTLET DESIGN BASIS: JAY R. SMITH #1770, JOSAM 25010 OR ZURN #Z199 BOTH W/ BIRD SCREEN OPTION
  - CONFIRM FINAL LOCATION AND ELEVATION WITH ARCHITECT BEFORE STARTING INSTALLATION OF OUTLETS.
  - PROVIDE ENGRAVED SIGN OVER SECONDARY DRAIN OUTLET: "SECONDARY ROOF DRAIN, CONTACT BLDG MAINTENANCE IF WATER IS FLOWING FROM THIS OUTLET"

#### 7 SECONDARY ROOF DRAINAGE SYSTEM DETAIL

NOT TO SCALE



Mechanical/Electrical Engineering Consultants

Capital District | Rochester | Buffalo | Syracuse

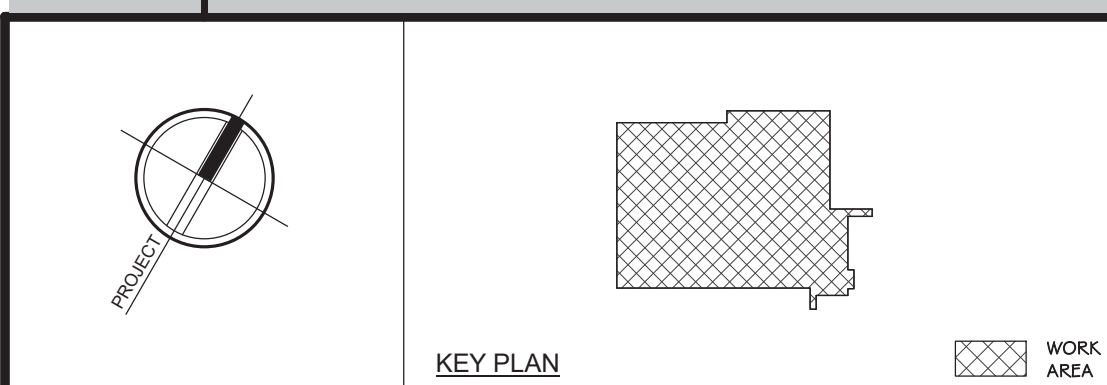
433 STATE STREET, 4TH FLOOR  
SCHENECTADY, NY 12305

518.533.2171  
www.meengineering.com

#### REVISIONS:

NUM.	DATE	DESCRIPTION

#### 100% BID DOCUMENTS



**ADG**

ARCHITECTS

25 WALLKILL AVE • MONTGOMERY • NY 12549  
O. 845.294.2724 | F. 888.305.6442

WWW.ADGARCHITECT.COM  
CONTACT@ADGARCHITECT.COM

ARCHITECTURE • PLANNING • INTERIORS

Project: **TOWN OF MONTGOMERY POLICE STATION**  
110 BRACKEN ROAD, MONTGOMERY,  
NEW YORK 12549

Drawing: **DETAILS**



Project: 23138 Date: 02/24/25

Drawn: CES Scale: AS NOTED

Drawing Number:

**P-503**



Diagram illustrating the gas service connection to an emergency generator. The connection starts from the GAS SERVICE BY UTILITY, passes through a VALVE, a PRESSURE REGULATOR (REG-1, UTILITY PROVIDED), and a GAS METER. The line then continues through a VALVE SIGN (TYPICAL 2) and a 2" pipe section. The connection then splits into two 2" pipe sections: one leading to the EMERGENCY GENERATOR BY OTHERS and another leading to a DIRT LEG. The DIRT LEG is connected to the EMERGENCY GENERATOR BY OTHERS via a UNION and FLEX CONN. The diagram also shows a ONE SIZE LARGER THAN UNDERGROUND PIPE x 6'-0" MIN. GAS BUFFER FOR REG. and a cross-section of the ground showing the connection path.

- A. P. C. SHALL PAINT ALL EXPOSED P.C. INSTALLED PIPING. COLOR TO BE SELECTED BY ARCHITECT.
- B. PROVIDE BOLLARDS WHERE REQUIRED.
- C. UNDERGROUND PIPING MATERIALS:  
PE2406 POLYETHYLENE, YELLOW - NYSEG, NATIONAL FUEL, CON ED  
PE3408 POLYETHYLENE, BLACK W/ YELLOW STRIPE - NIMO, RGSE, CON ED  
COATED STEEL PIPE, OVER ".
- D. REGULATORS SHALL BE INSTALLED WITH VENT MORE THAN 18" ABOVE FINISHED GRADE.

E. TRACER WIRE - 10 AWG, SOLID, THIN YELLOW INSULATION, WIRE SHALL BE CONTINUOUS, SOLDERED OR CRIMPED JOINTS ONLY. WIRE NUTS ARE NOT ALLOWED. A SEPARATE TRACER WIRE IS NOT REQUIRED WHERE PROVIDED AS PART OF LOCATOR TAPE.

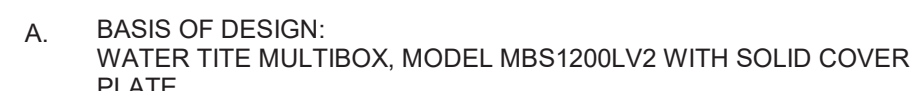
F. PROVIDE SIGNS ON VALVES AT METER: "EMERGENCY GENERATOR GAS SUPPLY VALVE" & "MAIN BLDG. GAS VALVE - SEPARATE VALVE FOR EMERGENCY GENERATOR"

G. WALL PENETRATIONS:  
- NON-MASONRY WALL: PROVIDE COATING OR WRAP ON PIPING AT WALL. PENETRATION TO PREVENT CORROSION AND SEAL TO WALL WATERTIGHT.  
- MASONRY WALL: PROVIDE NON-CORROSIVE SLEEVE THRU WALL & SEAL TO WALL WATERTIGHT. FILL SPACE BETWEEN SLEEVE AND PIPE.

NOT TO SCALE



2 NOT TO SCALE




3 NOT TO SCALE

[illegible]

**KEY PLAN**

The key plan shows the outline of San Diego County. A small rectangle in the central-eastern part of the county is filled with a cross-hatch pattern, indicating the location of the project area. A legend in the bottom right corner shows a cross-hatch pattern next to the text "WORK AREA".

Project: TOWN OF MONTGOMERY POLICE STATION  
110 BRACKEN ROAD, MONTGOMERY,  
NEW YORK 12549

	Project: 23138	Date: 02/24/25
	Drawn: CES	Scale: AS NOTED
	Drawing Number:	

P-504