

[illegible]

DATE: MARCH 2025

ADDITION AT WHITE PLAINS HIGH SCHOOL

SED 66-22-00-01-0-016-03

FINAL BID DOCUMENT

C 100.00

FRANK ELLIOT

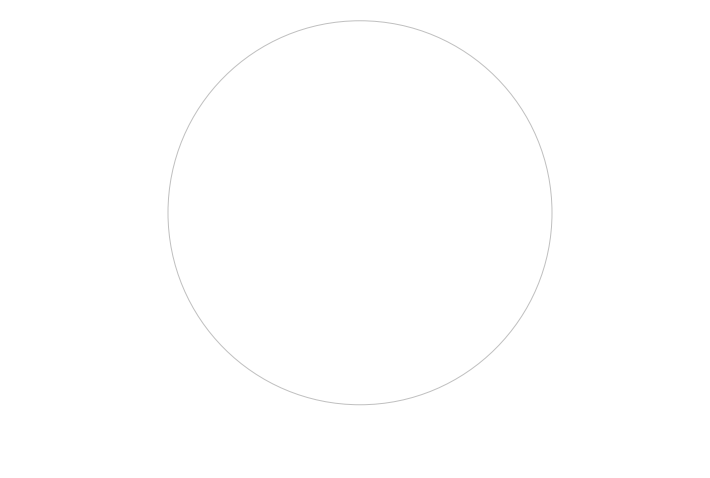
ALL WORK ON THIS SHEET THE RESPONSIBILITY OF CONTRACT C EXCEPT WHERE WORK IS INDICATED AS
'CONTRACT P' OR 'CONTRACT E'.

CONSULTANTS:

MARK	DATE	DESCRIPTION
1	04-11-2025	ADDENDUM 3
2	04-16-2025	ADDENDUM 4
3	04-21-2025	ADDENDUM 5

MARK	DATE	DESCRIPTION
1	04-11-2025	ADDENDUM 3
2	04-16-2025	ADDENDUM 4
3	04-21-2025	ADDENDUM 5

MARK	DATE	DESCRIPTION
1	04-11-2025	ADDENDUM 3
2	04-16-2025	ADDENDUM 4
3	04-21-2025	ADDENDUM 5



DESIGNED BY:	CWP	DRAWN BY:	CWP	CHECKED BY:	CWP/KMM	REVIEWED BY:	
PROJECT No:	WPSD 2203	DATE:	APRIL 2025	SCALE:	AS SHOWN		

WHITE PLAINS CITY SCHOOL DISTRICT

ADDITION AT WHITE PLAINS HIGH SCHOOL



550 NORTH STREET, WHITE
PLAINS, NY 10605

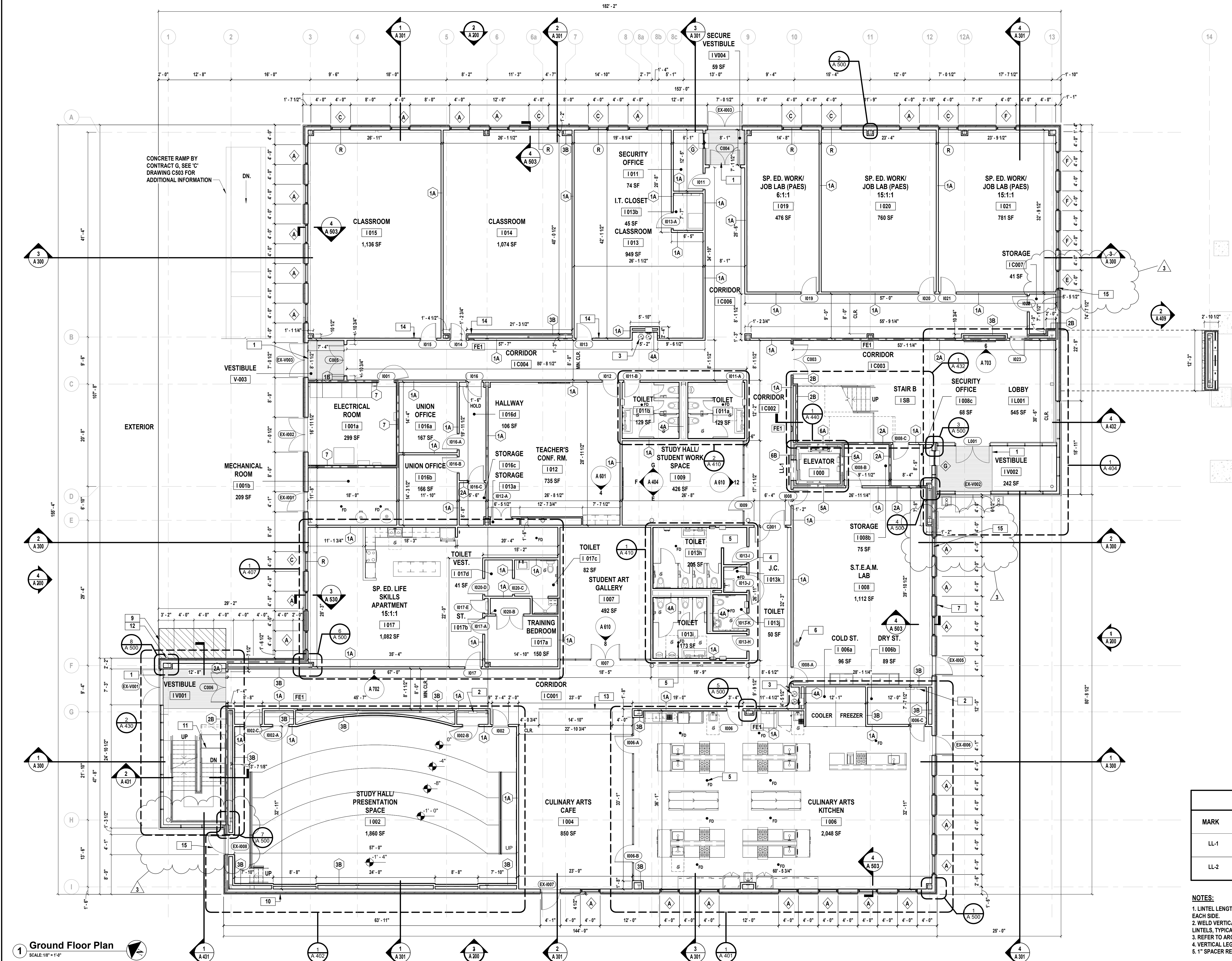
66-22-00-01-0-016-030

CONTRACT G GENERAL CONSTRUCTION

FINAL BID SET

GROUND FLOOR PLAN, NOTES, AND LEGEND

DRAWING No.
A 100.03



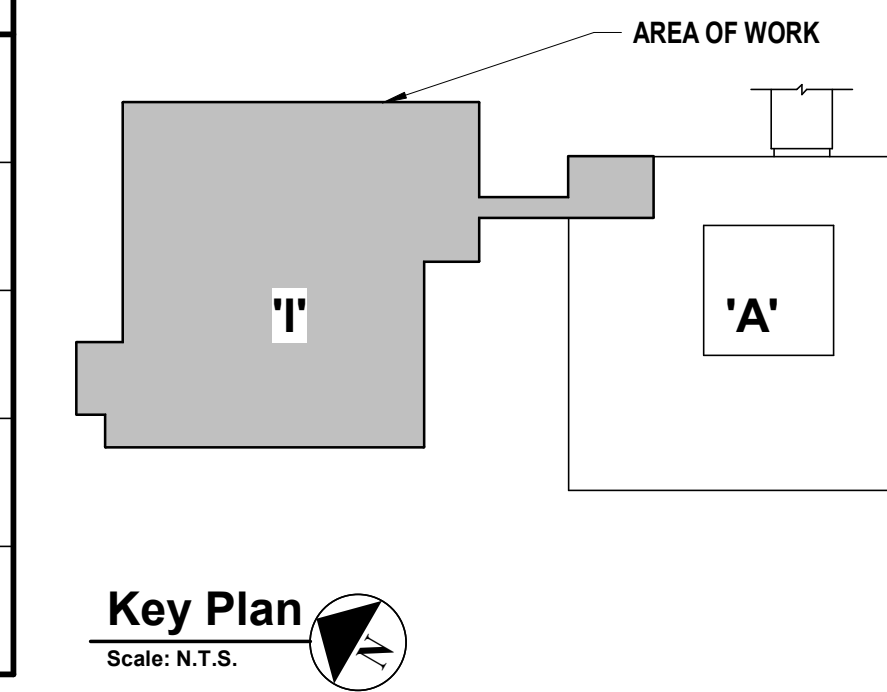
1 Ground Floor Plan
SCALE: 1/8" = 1'-0"

- #### FLOOR PLAN GENERAL NOTES
- COORDINATE THE WORK INDICATED HERE WITH ALL CONTRACT DOCUMENTS AND SPECIFICATIONS.
 - FOR WALL CONSTRUCTION REFER TO PARTITION SCHEDULE AND DETAILS ON SHEET A 000.00.
 - ALL DIMENSIONS ARE TO ROUGH STUD OR CONCRETE MASONRY UNIT (STRUCTURE), UNLESS NOTED OTHERWISE.
 - ALL DOORS IN STUD WALLS SHALL BE EITHER CENTERED ON WALLS, 4" FROM WALL TO ROUGH JAMB, OR AS OTHERWISE INDICATED.
 - PROVIDE SADDLES WHERE INDICATED AT ROOM TRANSITIONS AS NOTED IN THE DOOR SCHEDULE. SADDLES TO BE FULL WIDTH OF OPENING. (SEE THE PROJECT MANUAL FOR ADDITIONAL INFO.)
 - ALL PAINTING SHALL BE PERFORMED IN ACCORDANCE WITH THE REQUIREMENTS CONTAINED IN SECTION 09123 OF THE PROJECT MANUAL.
 - REFER TO ENLARGED FLOOR PLANS, DETAILS AND ALL OTHER CONTRACT DOCUMENTS AND SPECIFICATIONS FOR ADDITIONAL FRAMING INFORMATION.
 - FOR DOORS DENOTED (—) REFER TO DOOR SCHEDULE FOR ADDITIONAL INFORMATION.
 - FOR WINDOWS DENOTED (—) REFER TO WINDOW SCHEDULE FOR ADDITIONAL INFORMATION.
 - ACCOMMODATE THE CONSTRUCTION TO ACCEPT ALL PIPING, CONDUITS, EQUIPMENT, ETC. EITHER SPECIFIED OR DETAILED TO BE RECESSED OR CONCEALED IN WALLS AS REQUIRED.
 - FOR ALL STAIRS, SEE ENLARGED PLANS, SECTIONS AND DETAILS ON A 430 SERIES DRAWINGS.
 - ALL ELEVATOR LANDINGS AND INSIDE AND OUTSIDE OF STAIR LANDINGS ARE TO RECEIVE EMERGENCY EXIT MAPS. MAPS HAVE BEEN PROVIDED IN SPECIFICATION SECTION 10124.3.
 - ALL EXPOSED CORNERS OF Gypsum WALL BOARD ARE TO RECEIVE CORNER GUARDS UNLESS NOTED OR DIRECTED OTHERWISE BY THE ARCHITECT.
 - SEE SLAB PLAN FOR CONTROL AND EXPANSION JOINT LOCATIONS.
 - COORDINATE LOCATIONS FOR FLOOR DRAINS WITH CONTRACT 'G'.
 - PROVIDE RECESSED WALK OFF MAT IN CONCRETE FLOOR SLAB WHERE INDICATED ON PLANS BY CONTRACT 'G'.
 - REFER TO SHEETS G 100.00 FOR FIRE RATED WALLS AND FIRE EXTINGUISHER LOCATIONS TO BE PROVIDED AND INSTALLED BY CONTRACT 'G'.
 - SPRAY-APPLIED FIREPROOFING THAT ACHIEVES A MINIMUM 1-HOUR RATING IS ONLY REQUIRED IN THE FOLLOWING LOCATIONS:
- ON THE BRIDGE STRUCTURE, A MINIMUM OF 1" OUT FROM THE FIRE WALL ADJACENT TO THE EXISTING BUILDING, AND ANY SUPPORTING STRUCTURE BACK TO THE NEXT COLUMN LINE. REFER TO INFORMATION ON SHEETS A121 & A503.
- ON ANY SUPPORTING STRUCTURE THAT PENETRATES A FIRE BARRIER, SAID STRUCTURE THAT IS OUTSIDE THE RATED ENCLOSURE SHALL BE TREATED FULLY TO THE NEXT COLUMN LINE, INCLUDING THE NEXT SUPPORTING COLUMN. THIS CONDITION IS APPLICABLE AT THE TWO (2) STAIR ENCLOSURES.

- #### FLOOR PLAN KEYNOTE LEGEND
- | KEYNOTE | SCOPE OF WORK |
|---------|------------------------------------------------------------------------------------------------------------------------------------------------------------------------------------------|
| 1 | WALK OFF MAT. SEE DETAILS FOR ADDITIONAL INFORMATION. |
| 2 | ELECTRICAL PANEL BY CONTRACT 'E'. REFER TO ELECTRICAL DRAWINGS. |
| 3 | WALL MOUNTED ADA DRINKING FOUNTAIN + BOTTLE FILLER. REFER TO SPECIFICATIONS FOR ADDITIONAL INFORMATION. FURNISHED AND INSTALLED BY CONTRACT 'P'. ELECTRICAL CONNECTIONS BY CONTRACT 'E'. |
| 4 | WALL MOUNT MOP/BROOM HOLDER FURNISHED AND INSTALLED BY CONTRACT 'G'. |
| 5 | FLOOR DRAIN, PROVIDED BY CONTRACT 'P'. CONTRACT 'G' TO COORDINATE INSTALL AS REQUIRED. |
| 6 | EMERGENCY EYE WASH BY CONTRACT 'P'. SEE 'P' DRAWINGS FOR ADDITIONAL INFORMATION. |
| 7 | HOSE BIB BY CONTRACT 'P'. SEE 'P' DRAWINGS FOR ADDITIONAL INFORMATION. |
| 8 | ROOF ACCESS LADDER BY CONTRACT 'G'. SEE DRAWING A540.00 AND SPECIFICATIONS FOR ADDITIONAL INFORMATION. |
| 9 | APPROXIMATE LOCATION OF GAS METER. SEE 'P' DRAWINGS FOR ADDITIONAL INFORMATION. |
| 10 | CAST METAL BUILDING SIGNAGE 24" HIGH X 2" DEEP LED BACKLIT. |
| 11 | STAIR WAY GATE. REFER TO SPECIFICATIONS FOR ADDITIONAL INFORMATION. |
| 12 | HIGH-SECURITY KEY LOCK BOX. REFER TO SPECIFICATIONS FOR ADDITIONAL INFORMATION. |
| 13 | 3'-0" CRL GRS DRY GLAZED RAILING SYSTEM. SEE SPECIFICATION FOR ADDITIONAL INFORMATION. |
| 14 | NEW SIGNAGE TO BE PROVIDED BY 'G' CONTRACTOR 24" X 18" RED LETTERING ON WHITE BACKGROUND. OCCUPANCY SIGN TO READ "MAXIMUM OCCUPANCY NOT TO EXCEED 40 PEOPLE". |
| 15 | INDICATES DOORS/ WINDOWS THAT REQUIRE FIRE-RATED ALUMINUM FRAME AND GLAZING (45 MIN). REFER TO SPECIFICATIONS FOR ADDITIONAL INFORMATION. |

FLOOR PLAN LEGEND

	EXTERIOR WALL CONSTRUCTION - SEE WALL TYPES ON A-000 FOR ADDITIONAL INFORMATION		RECESSED FIRE EXTINGUISHER
	INTERIOR MASONRY WALL CONSTRUCTION - SEE WALL TYPES ON A-000 FOR ADDITIONAL INFORMATION		SINGLE DRINKING WATER/ BOTTLE FILLING STATION
	INTERIOR METAL STUD WALL CONSTRUCTION - SEE WALL TYPES ON A-000 FOR ADDITIONAL INFORMATION		DOUBLE DRINKING WATER/ BOTTLE FILLING STATION
	WINDOW, FRAME AND ASSOCIATED HARDWARE - SEE SCHEDULE FOR ADDITIONAL INFORMATION		EMERGENCY EYE WASH STATION
	DOOR, FRAME AND ASSOCIATED HARDWARE - SEE SCHEDULE FOR ADDITIONAL INFORMATION		FLOOR DRAIN, SEE 'P' DRAWINGS FOR ADDITIONAL INFORMATION



Key Plan
Scale: 1/8" = 1'-0"

LINTEL SCHEDULE

MARK	SIZE	DETAILS	COMMENTS
LL-1	(2) 3-1/2 x 3-1/2x 5/16" (LLV)		NOTES 1-4
LL-2	(2) L5 x 5 x 5/16"		NOTES 1-5

- #### NOTES:
- LINTEL LENGTH SHALL BE M.O. + 1'-4" TO PROVIDE MIN. BEARING OF 8" ONTO SOLID MASONRY ON EACH SIDE.
 - WELD VERTICAL REINFORCEMENT INTERRUPTED BY MASONRY OPENINGS TO TOP OF THE STEEL LINTELS, TYPICAL.
 - REFER TO ARCHITECTURAL FLOOR PLANS AND ELEVATIONS FOR LINTEL LOCATIONS.
 - VERTICAL LEGS OF DOUBLE ANGLES SHALL BE WELDED TOGETHER.
 - 5.1" SPACER REQUIRED.

MARK	DATE	DESCRIPTION
1	04-11-2025	ADDENDUM 3
2	04-16-2025	ADDENDUM 4
3	04-21-2025	ADDENDUM 5

MARK	DATE	DESCRIPTION
1	04-11-2025	ADDENDUM 3
2	04-16-2025	ADDENDUM 4
3	04-21-2025	ADDENDUM 5

MARK	DATE	DESCRIPTION
1	04-11-2025	ADDENDUM 3
2	04-16-2025	ADDENDUM 4
3	04-21-2025	ADDENDUM 5

MARK	DATE	DESCRIPTION
1	04-11-2025	ADDENDUM 3
2	04-16-2025	ADDENDUM 4
3	04-21-2025	ADDENDUM 5

WHITE PLAINS CITY SCHOOL DISTRICT

ADDITION AT WHITE PLAINS HIGH SCHOOL



550 NORTH STREET, WHITE
PLAINS, NY 10605

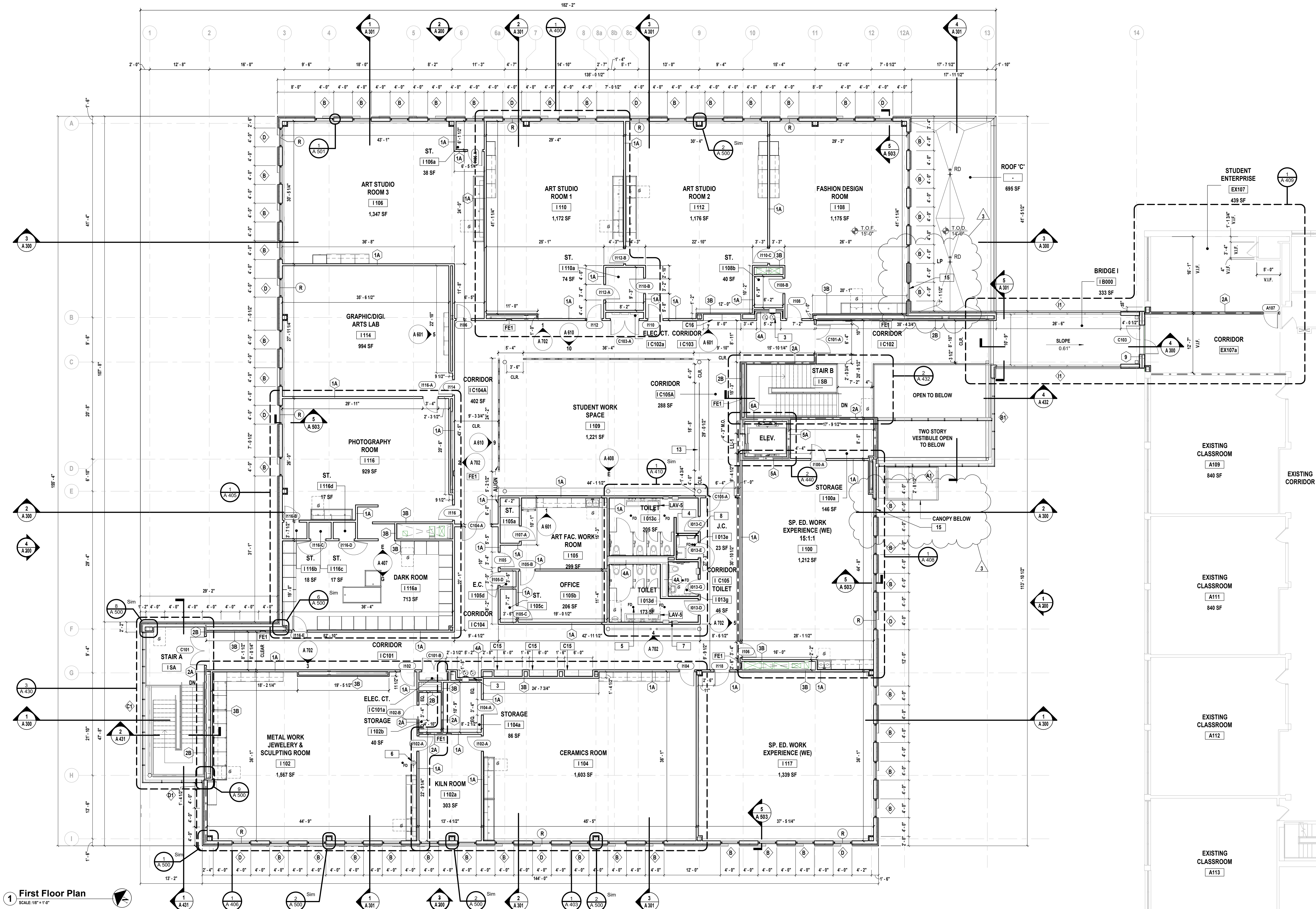
66-22-00-01-0-016-030

CONTRACT G GENERAL CONSTRUCTION

FINAL BID SET

FIRST FLOOR PLAN, NOTES, AND LEGEND

A 101.03



First Floor Plan

SCALE: 1/8" = 1'-0"

FLOOR PLAN GENERAL NOTES

- COORDINATE THE WORK INDICATED HERE WITH ALL CONTRACT DOCUMENTS AND SPECIFICATIONS.
- FOR WALL CONSTRUCTION REFER TO PARTITION SCHEDULE AND DETAILS ON SHEET A 100.00.
- ALL DIMENSIONS ARE TO ROUGH STUD OR CONCRETE MASONRY UNIT (STRUCTURE), UNLESS NOTED OTHERWISE.
- ALL DOORS IN STUD WALLS SHALL BE EITHER CENTERED ON WALLS, 4" FROM WALL TO ROUGH JAMB, OR AS OTHERWISE INDICATED.
- PROVIDE SADDLES WHERE INDICATED AT ROOM TRANSITIONS AS NOTED IN THE DOOR SCHEDULE. SADDLES TO BE FULL WIDTH OF OPENING. (SEE THE PROJECT MANUAL FOR ADDITIONAL INFO.)
- ALL PAINTING SHALL BE PERFORMED IN ACCORDANCE WITH THE REQUIREMENTS CONTAINED IN SECTION 09123 OF THE PROJECT MANUAL.
- REFER TO ENLARGED FLOOR PLANS, DETAILS AND ALL OTHER CONTRACT DOCUMENTS AND SPECIFICATIONS FOR ADDITIONAL FRAMING INFORMATION.
- FOR DOORS DENOTED (—) REFER TO DOOR SCHEDULE FOR ADDITIONAL INFORMATION.
- FOR WINDOWS DENOTED (—), REFER TO WINDOW SCHEDULE FOR ADDITIONAL INFORMATION.
- ACCOMMODATE THE CONSTRUCTION TO ACCEPT ALL PIPING, CONDUITS, EQUIPMENT, ETC. EITHER SPECIFIED OR DETAILED TO BE RECESSED OR CONCEALED IN WALLS AS REQUIRED.
- FOR ALL STAIRS, SEE ENLARGED PLANS, SECTIONS AND DETAILS ON A 430 SERIES DRAWINGS.
- ALL ELEVATOR LANDINGS AND INSIDE AND OUTSIDE OF STAIR LANDINGS ARE TO RECEIVE EMERGENCY EXIT MAPS. MAPS HAVE BEEN PROVIDED IN SPECIFICATION SECTION 10124.3.
- ALL EXPOSED CORNERS OF GYPSUM WALL BOARD ARE TO RECEIVE CORNER GUARDS UNLESS NOTED OR DIRECTED OTHERWISE BY THE ARCHITECT.
- SEE SLAB PLAN FOR CONTROL AND EXPANSION JOINT LOCATIONS.
- COORDINATE LOCATIONS FOR FLOOR DRAINS WITH CONTRACT 'P'.
- PROVIDE RECESSED WALK OFF MAT IN CONCRETE FLOOR SLAB WHERE INDICATED ON PLANS BY CONTRACT 'P'.
- REFER TO SHEETS G 100.00 FOR FIRE RATED WALLS AND FIRE EXTINGUISHER LOCATIONS TO BE PROVIDED AND INSTALLED BY CONTRACT 'G'.
- SPRAY-APPLIED FIREPROOFING THAT ACHIEVES A MINIMUM 1-HOUR RATING IS ONLY REQUIRED IN THE FOLLOWING LOCATIONS:
 - ON THE BRIDGE STRUCTURE, A MINIMUM OF 1" OUT FROM THE FIRE WALL ADJACENT TO THE EXISTING BUILDING, AND ANY SUPPORTING STRUCTURE BACK TO THE NEXT COLUMN LINE. REFER TO INFORMATION ON SHEETS A121 & A503.
 - ON ANY SUPPORTING STRUCTURE THAT PENETRATES A FIRE BARRIER, SAID STRUCTURE THAT IS OUTSIDE THE RATED ENCLOSURE SHALL BE TREATED FULLY TO THE NEXT COLUMN LINE, INCLUDING THE NEXT SUPPORTING COLUMN. THIS CONDITION IS APPLICABLE AT THE TWO (2) STAIR ENCLOSURES.

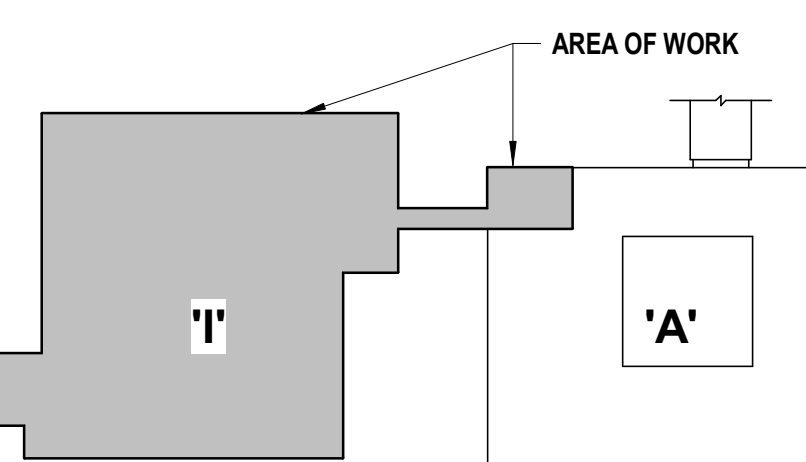
FLOOR PLAN KEYNOTE LEGEND

KEYNOTE	SCOPE OF WORK
1	WALK OFF MAT. SEE DETAILS FOR ADDITIONAL INFORMATION.
2	ELECTRICAL PANEL BY CONTRACT 'E'. REFER TO ELECTRICAL DRAWINGS.
3	WALL MOUNTED ADA DRINKING FOUNTAIN + BOTTLE FILLER. REFER TO SPECIFICATIONS FOR ADDITIONAL INFORMATION. FURNISHED AND INSTALLED BY CONTRACT 'P'. ELECTRICAL CONNECTIONS BY CONTRACT 'E'.
4	WALL MOUNT MOP/BROOM HOLDER FURNISHED AND INSTALLED BY CONTRACT 'G'.
5	FLOOR DRAIN, PROVIDED BY CONTRACT 'P'. CONTRACT 'G' TO COORDINATE INSTALL AS REQUIRED.
6	EMERGENCY EYE WASH BY CONTRACT 'P'. SEE 'P' DRAWINGS FOR ADDITIONAL INFORMATION.
7	HOSE BIB BY CONTRACT 'P'. SEE 'P' DRAWINGS FOR ADDITIONAL INFORMATION.
8	ROOF ACCESS LADDER BY CONTRACT 'G'. SEE DRAWING A540.00 AND SPECIFICATIONS FOR ADDITIONAL INFORMATION.
9	APPROXIMATE LOCATION OF GAS METER. SEE 'P' DRAWINGS FOR ADDITIONAL INFORMATION.
10	CAST METAL BUILDING SIGNAGE: 24" HIGH X 2" DEEP LED BACKLIT.
11	STAIR WAY GATE. REFER TO SPECIFICATIONS FOR ADDITIONAL INFORMATION.
12	HIGH-SECURITY KEY LOCK BOX. REFER TO SPECIFICATIONS FOR ADDITIONAL INFORMATION.
13	3'-0" CRL GRS DRY GLAZED RAILING SYSTEM. SEE SPECIFICATION FOR ADDITIONAL INFORMATION.
14	NEW SIGNAGE TO BE PROVIDED BY 'G' CONTRACTOR 24" X 18" RED LETTERING ON WHITE BACKGROUND. OCCUPANCY SIGN TO READ "MAXIMUM OCCUPANCY NOT TO EXCEED 49 PEOPLE".
15	INDICATES DOORS/ WINDOWS THAT REQUIRE FIRE-RATED ALUMINUM FRAME AND GLAZING (45 MIN). REFER TO SPECIFICATIONS FOR ADDITIONAL INFORMATION.

FLOOR PLAN LEGEND



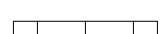






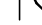
	EXTERIOR WALL CONSTRUCTION - SEE WALL TYPES ON A-000 FOR ADDITIONAL INFORMATION		RECESSED FIRE EXTINGUISHER
	INTERIOR MASONRY WALL CONSTRUCTION - SEE WALL TYPES ON A-000 FOR ADDITIONAL INFORMATION		SINGLE DRINKING WATER/ BOTTLE FILLING STATION
	INTERIOR METAL STUD WALL CONSTRUCTION - SEE WALL TYPES ON A-000 FOR ADDITIONAL INFORMATION		DOUBLE DRINKING WATER/ BOTTLE FILLING STATION
	WINDOW, FRAME AND ASSOCIATED HARDWARE - SEE SCHEDULE FOR ADDITIONAL INFORMATION		EMERGENCY EYE WASH STATION
	DOOR, FRAME AND ASSOCIATED HARDWARE - SEE SCHEDULE FOR ADDITIONAL INFORMATION		FLOOR DRAIN, SEE 'P' DRAWINGS FOR ADDITIONAL INFORMATION

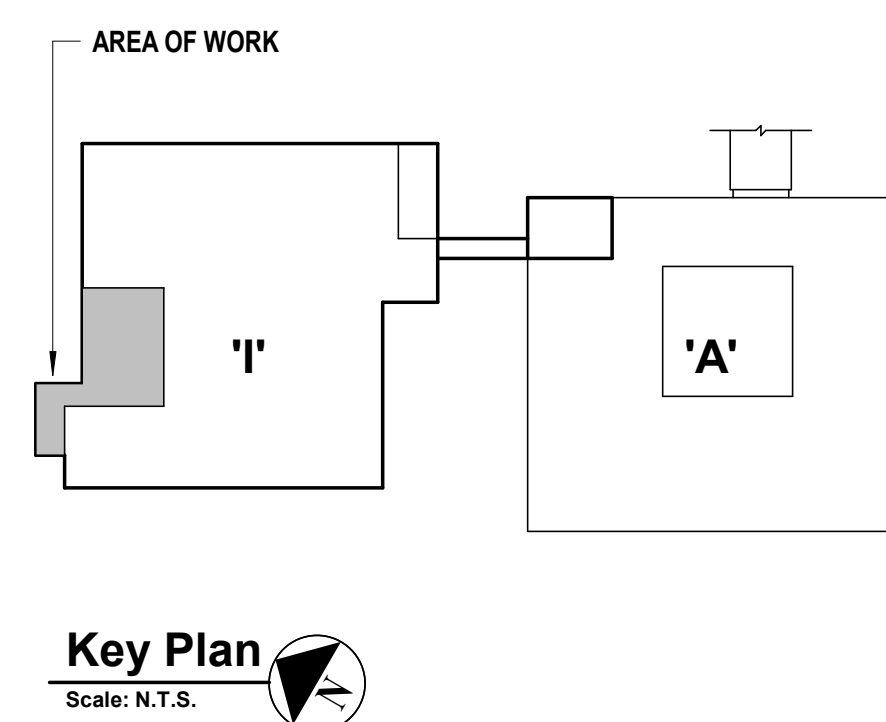
Key Plan
Scale: N.T.S.





FLOOR PLAN KEYNOTE LEGEND	
KEYNOTE	SCOPE OF WORK
1	WALK OFF MAT, SEE DETAILS FOR ADDITIONAL INFORMATION.
2	ELECTRICAL PANEL BY CONTRACT 'E'. REFER TO ELECTRICAL DRAWINGS.
3	WALL MOUNTED ADA DRINKING FOUNTAIN + BOTTLE FILLER, REFER TO SPECIFICATIONS FOR ADDITIONAL INFORMATION. FURNISHED AND INSTALLED BY CONTRACT 'P'. ELECTRICAL CONNECTIONS BY CONTRACT 'E'.
4	WALL MOUNT MOP/BROOM HOLDER FURNISHED AND INSTALLED BY CONTRACT 'G'.
5	FLOOR DRAIN, PROVIDED BY CONTRACT 'P'. CONTRACT 'G' TO COORDINATE INSTALL AS REQUIRED.
6	EMERGENCY EYE WASH BY CONTRACT 'P'. SEE 'P' DRAWINGS FOR ADDITIONAL INFORMATION.
7	HOSE BIB BY CONTRACT 'P'. SEE 'P' DRAWINGS FOR ADDITIONAL INFORMATION.
8	ROOF ACCESS LADDER BY CONTRACT 'G'. SEE DRAWINGS A540.80 AND SPECIFICATIONS FOR ADDITIONAL INFORMATION.
9	APPROXIMATE LOCATION OF GAS METER. SEE 'P' DRAWINGS FOR ADDITIONAL INFORMATION.
10	CAST METAL BUILDING SIGNAGE, 24" HIGH X 2" DEEP, 16 BACKLIT.
11	STAIR WAY GATE. REFER TO SPECIFICATIONS FOR ADDITIONAL INFORMATION.
12	HIGH-SPECIFICITY KEY LOCK BOX. REFER TO SPECIFICATIONS FOR ADDITIONAL INFORMATION.
13	3-4" CRL GRS DRY GLAZED RAILING SYSTEM. SEE SPECIFICATION FOR ADDITIONAL INFORMATION.
14	NEW SIGNAGE TO BE PROVIDED BY 'G' CONTRACTOR 24" X 18" LED LETTERING ON WHITE BACKGROUND. OCCUPANCY SIGN TO READ " MAXIMUM OCCUPANCY NOT TO EXCEED 48 PEOPLE".
15	INDICATES DOORS/ WINDOWS THAT REQUIRE FIRE-RATED ALUMINUM FRAME AND GLAZING (45 MIN.), REFER TO SPECIFICATIONS FOR ADDITIONAL INFORMATION.

FLOOR PLAN LEGEND			
	EXTERIOR WALL CONSTRUCTION - SEE WALL TYPES ON A-000 FOR ADDITIONAL INFORMATION		RECESSED FIRE EXTINGUISHER
	INTERIOR MASONRY WALL CONSTRUCTION - SEE WALL TYPES ON A-000 FOR ADDITIONAL INFORMATION		SINGLE DRINKING WATER/ BOTTLE FILLING STATION
	INTERIOR METAL STUD WALL CONSTRUCTION - SEE WALL TYPES ON A-000 FOR ADDITIONAL INFORMATION		DOUBLE DRINKING WATER/ BOTTLE FILLING STATION
	WINDOW, FRAME AND ASSOCIATED HARDWARE - SEE SCHEDULE FOR ADDITIONAL INFORMATION		EMERGENCY EYE WASH STATION
	DOOR, FRAME AND ASSOCIATED HARDWARE - SEE SCHEDULE FOR ADDITIONAL INFORMATION		FLOOR DRAIN, SEE "P" DRAWINGS FOR ADDITIONAL INFORMATION



MARK	DATE	DESCRIPTION
1	04-11-2025	ADDENDUM 3
3	04-21-2025	ADDENDUM 5

MARK	DATE	DESCRIPTION
1	04-11-2025	ADDENDUM 3
3	04-21-2025	ADDENDUM 5

DESIGNED BY:	CWP	DOD/NPO	CWP/KMM	REVIEWED BY:
PROJECT No:	WPSD 2203	DATE:	APRIL 2025	SCALE:
				AS SHOWN

WHITE PLAINS CITY SCHOOL DISTRICT

ADDITION AT WHITE PLAINS HIGH SCHOOL



550 NORTH STREET, WHITE PLAINS, NY 10605

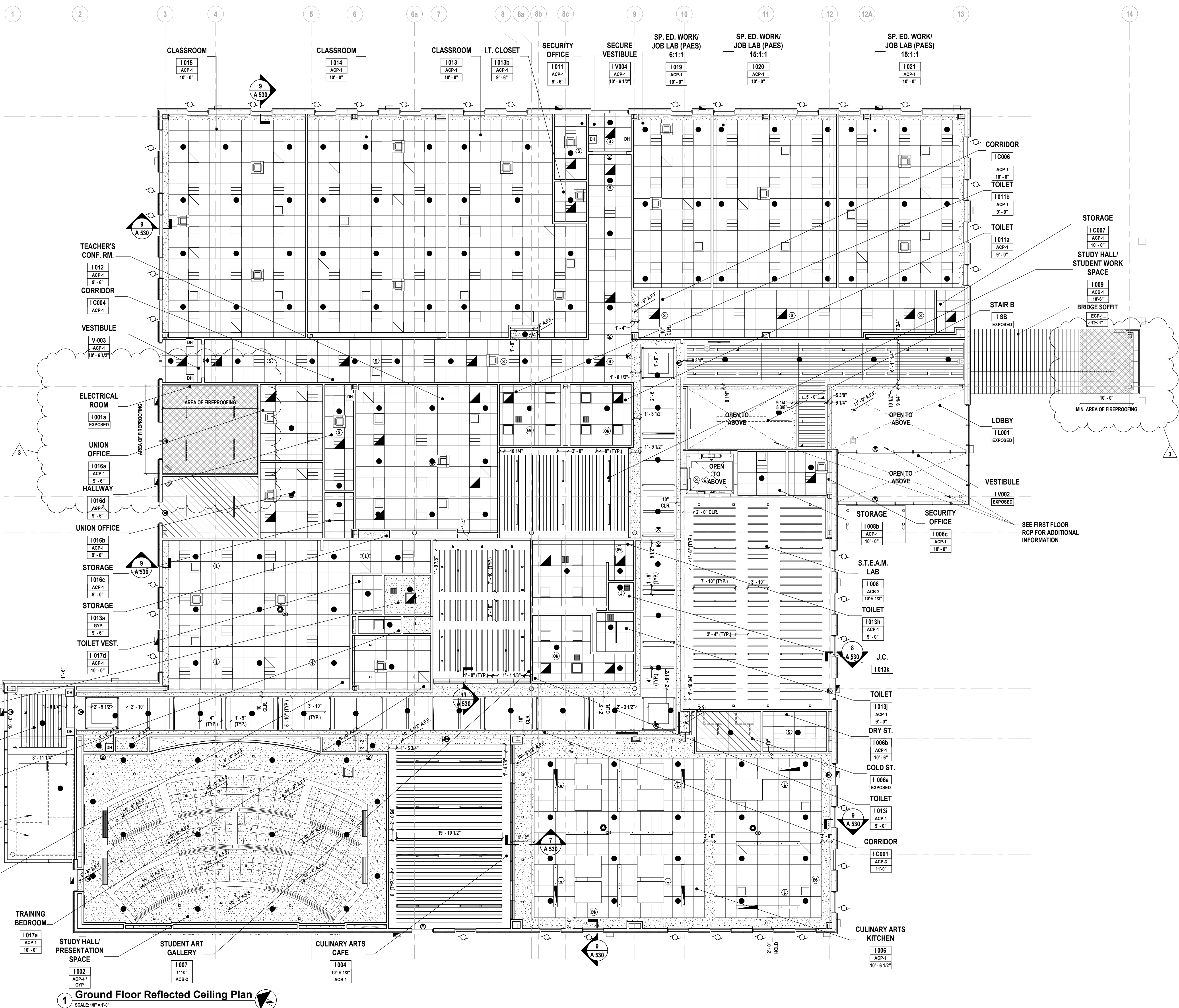
66-22-00-01-0-016-030

CONTRACT G GENERAL CONSTRUCTION

FINAL BID SET

GROUND FLOOR REFLECTED CEILING PLAN & NOTES

DRAWING No. **A 120.03**



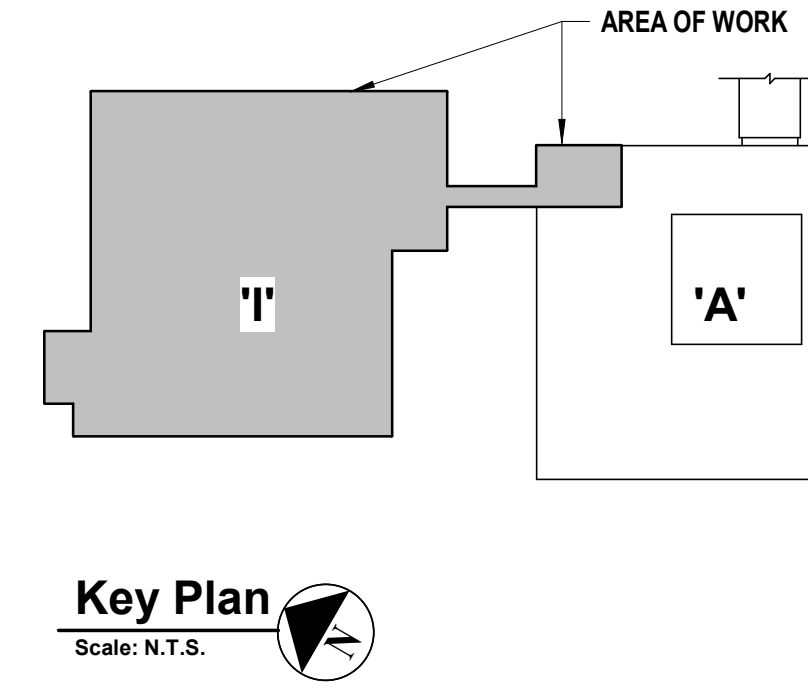
1 Ground Floor Reflected Ceiling Plan
SCALE: 1/8" = 1'-0"

REFLECTED CEILING PLAN NOTES

- CONTRACTOR SHALL COORDINATE ALL THE WORK REQUIRED ON THIS DRAWING WITH ALL ARCHITECTURAL, STRUCTURAL, & MEP DRAWINGS AND SPECIFICATIONS.
- ACCOMMODATE THE CONSTRUCTION TO ACCEPT ALL PIPING, CONDUITS, EQUIPMENT, ETC. EITHER SPECIFIED OR DETAILED TO BE RECESSED OR CONCEALED IN MASONRY/STUD WALLS AS REQUIRED BY THIS CONTRACT. COORDINATE THE LOCATION OF ANY RECESSED OR CONCEALED ITEMS.
- SEE CEILING DETAILS AND FINISH SCHEDULE ON DRAWINGS FOR ADDITIONAL INFORMATION.
- EXPOSED CEILING SHALL BE PAINTED. THIS INCLUDES ALL STRUCTURAL STEEL, METAL DECK, CONDUITS, PIPING, & ANY OTHER ITEMS FASTENED OR SUSPENDED FROM CEILING U.O.
- SPRAY-APPLIED FIREPROOFING THAT ACHIEVES A MINIMUM 1-HOUR RATING IS ONLY REQUIRED IN THE FOLLOWING LOCATIONS:
 - ON THE BRIDGE STRUCTURE, A MINIMUM OF 10' OUT FROM THE FIRE WALL ADJACENT TO THE EXISTING BUILDING, AND ANY SUPPORTING STRUCTURE BACK TO THE NEXT COLUMN LINE. REFER TO INFORMATION ON SHEETS A121 & A303.
 - ON ANY SUPPORTING STRUCTURE THAT PENETRATES A FIRE BARRIER. SAID STRUCTURE THAT IS OUTSIDE THE RATED ENCLOSURE SHALL BE TREATED FULLY TO THE NEXT COLUMN LINE, INCLUDING THE NEXT SUPPORTING COLUMN. THIS CONDITION IS APPLICABLE AT THE TWO (2) STAIR ENCLOSURES.

REFLECTED CEILING PLAN LEGEND

#	CEILING HEIGHT ABOVE FINISH FLOOR	SYMBOL	DESCRIPTION
1	PENDANT MOUNTED FIXTURE	(H)	EXPOSED CEILING (PAINT)
2	RECESSED LINEAR LED LIGHT FIXTURE. SEE 'E' DWGS FOR ADDITIONAL INFO.	(C)	HEAT DETECTOR. SEE 'E' DWGS FOR ADDITIONAL INFO.
3	2'x2' LAY-IN LIGHT FIXTURE. SEE 'E' DWGS FOR ADDITIONAL INFO.	(C)	CARBON MONOXIDE DETECTOR. SEE 'E' DWGS FOR ADDITIONAL INFO.
4	EXIT SIGN. SEE 'E' DWGS FOR ADDITIONAL INFO.	(C)	CEILING INDOOR VRY CASSETTE. SEE 'H' DWGS FOR ADDITIONAL INFO.
5	4" SQUARE LED DOWN LIGHT FIXTURE. SEE 'E' DWGS FOR ADDITIONAL INFO.	(C)	CLG. DIFFUSER AIR GRILLE. SEE 'H' DWGS FOR ADDITIONAL INFO.
6	2'x2' ACoustICAL CEILING PANEL (ACP-1)	(C)	CLG. RETURN AIR GRILLE. SEE 'H' DWGS FOR ADDITIONAL INFO.
7	GYPsUM CEILING (PAINT) (GYP)	(C)	CONCEALED SPRINKLER HEAD. SEE 'SP' DWGS FOR ADDITIONAL INFO.
8		(S)	SMOKE DETECTOR. SEE 'E' DWGS FOR ADDITIONAL INFO.
9		(C)	OCCUPANCY SENSOR. SEE 'E' DWGS FOR ADDITIONAL INFO.
10		(C)	DAYLIGHT SENSOR. SEE 'E' DWGS FOR ADDITIONAL INFO.
11		(C)	4'x4' ACoustICAL PERFORATED PANELS (ACP-2)
12		(C)	4'x6' ACoustICAL PERFORATED PANELS (ACP-3)
13		(C)	ACoustICAL PERFORATED PANELS (ACP-4)
14		(C)	1" THICK METAL ACoustICAL BLADES (ACB-1)
15		(C)	2" THICK ACoustICAL BLADES (ACB-2)
16		(C)	2" THICK METAL ACoustICAL BLADES (ACB-3)
17		(C)	LINEAR VENEERED CEILING PLANKS (CP-1)
18		(C)	METAL CEILING PANELS 2'x4' (CP-2)
19		(C)	EXTERIOR CEILING PANELS 9" (ECP-1)
20		(C)	18"x18" ACCESS PANEL. COORDINATE LOCATION WITH 'H' DWGS
21		(C)	SPRAY APPLIED FIRE-RESISTIVE MATERIAL ON U.S. OF DECK
22		(C)	DOUBLE ROLLER SHADE AND HOUSING (RS-1)



C:\Users\delvaz\Documents\WPSD2203_Corridor_A_IDA\Sheet011018.rvt

4/2/2025 11:20:11 PM

DOOR SCHEDULE																										
DOOR NO.	FROM ROOM			TO ROOM			DOOR SIZE		DOOR			FRAME			DETAILS			FIRE RATING	HARDWARE SET	SECURITY ACCESS	SELF CLOSING	DOOR SIGNAGE	WEATHER STRIPPING	PANIC HARDWARE	COMMENTS	
	NAME	NUMBER		NAME	NUMBER		WIDTH X HEIGHT	THICKNESS	DOOR TYPE	DOOR MATERIAL	DOOR FINISH	FRAME TYPE	FRAME MATERIAL	FRAME FINISH	HEAD	JAMB	SADDLE									
IB001	STORAGE	IB 001		STAIR A	ISA		(2) 40" x 80"	1 1/2"	B	HM	FF	F2	HM	FF	DH02	DJ02		45 MIN.	CR03-2	X	X	X		X		
IB002	STORAGE	IB 001		EXTERIOR	-		(2) 36" x 84"	1 1/2"	B	FRP	FF	F2	HM	FF	DH07	DJ07	DS01		CR03-2	X	X			X		
C001	CORRIDOR	IC002		CORRIDOR	IC001		(2) 36" x 84"	1 1/2"	F	WD	FF	F5	HM	FF	DH04	DJ02			04	X	X	X		X	ELECTRIFIED HARDWARE	
C003	CORRIDOR	IC002		CORRIDOR	IC003		(2) 36" x 84"	1 1/2"	F	WD	FF	F5	HM	FF	DH04	DJ02		45 MIN.	CR05	X	X			X	ELECTRIFIED HARDWARE	
C004	CORRIDOR	IC006		SECURE VESTIBULE	V004		(2) 36" x 84"	1 1/2"	F	WD	FF	F5	HM	FF	DH04	DJ02			04-1	X	X		X	X	ELECTRIFIED HARDWARE	
C005	CORRIDOR	IC004		VESTIBULE	V-003		(2) 36" x 84"	1 1/2"	F	WD	FF	F5	HM	FF	DH04	DJ02			04-1	X	X		X	X	ELECTRIFIED HARDWARE	
C006	CORRIDOR	IC001		VESTIBULE	V001		(2) 36" x 84"	1 1/2"	F	WD	FF	F5	HM	FF	DH04	DJ02		45 MIN.	CR04-3	X	X	X	X	X	ELECTRIFIED HARDWARE	
EX-1001	MECHANICAL ROOM	1001b		EXTERIOR	-		44" x 104"	1 1/2"	A	FRP	FF	F6	ALUM.	FF	DH06	DJ06	DS01		CR03-1	X	X	X	X	X		
EX-1002	ELECTRICAL ROOM	1001a		EXTERIOR	-		79 1/2" x 104"	1 1/2"	B	FRP	FF	F6	ALUM.	FF	DH06	DJ06	DS01		CR03	X	X	X	X	X		
EX-1003	SECURE VESTIBULE	V004		EXTERIOR	-		79 1/2" x 104"	1 1/2"	D	ALUM/ GL	FF	F6	ALUM.	FF	DH01	DJ01	DS01		CR04	X	X		X	X	ELECTRIFIED HARDWARE	
EX-1005	S.T.E.A.M. LAB	1008		EXTERIOR	-		44" x 104"	1 1/2"	C	ALUM/ GL	FF	F6	ALUM.	FF	DH01	DJ01	DS01		CR03-1	X	X		X	X		
EX-1006	CULINARY ARTS KITCHEN	1009		EXTERIOR	-		44" x 104"	1 1/2"	C	ALUM/ GL	FF	F6	ALUM.	FF	DH01	DJ01	DS01		CR03-1	X	X		X	X		
EX-1007	CULINARY ARTS CAFE	1004		EXTERIOR	-		44" x 104"	1 1/2"	C	ALUM/ GL	FF	F6	ALUM.	FF	DH01	DJ01	DS01		CR03-1	X	X		X	X		
EX-1008	STUDY HALL/ PRESENTATION SPACE	1002		EXTERIOR	-		44" x 104"	1 1/2"	C	ALUM/ GL	FF	F6	ALUM.	FF	DH01	DJ01	DS01	45 MIN.	CR03-1	X	X		X	X		
EX-V001	VESTIBULE	V001		EXTERIOR	-		84 1/2" x 107"	1 1/2"	D	ALUM/ GL	FF	F6	ALUM.	FF	DH01	DJ01	DS01		CR04	X	X		X	X	ELECTRIFIED HARDWARE	
EX-V002	VESTIBULE	V002		EXTERIOR	-		84 1/2" x 107"	1 1/2"	D	ALUM/ GL	FF	F6	ALUM.	FF	DH03	DJ03	DS05		CR04-1	X	X		X	X	ELECTRIFIED HARDWARE	
EX-V003	VESTIBULE	V-003		EXTERIOR	-		79 1/2" x 104"	1 1/2"	D	ALUM/ GL	FF	F6	ALUM.	FF	DH01	DJ01	DS01		CR04	X	X		X	X	ELECTRIFIED HARDWARE	
I001	CORRIDOR	IC004		ELECTRICAL ROOM	I001a		36" x 84"	1 1/2"	A	WD	FF	F1	HM	FF	DH02	DJ02		90 MIN.	CR01-8	X	X	X		X		
I002	CORRIDOR	IC001		STUDY HALL/ PRESENTATION SPACE	I002		36" x 84"	1 1/2"	E	WD	FF	F1	HM	FF	DH02	DJ02			CR01-1	X	X	X				
I002-A	STUDY HALL/ PRESENTATION SPACE	1002		PRESENTATION CLOSET	I002a		36" x 84"	1 1/2"	A	WD	FF	F1	HM	FF	DH02	DJ02			CR01-2	X	X					
I002-B	PRESENTATION CLOSET II	I013n		STUDY HALL/ PRESENTATION SPACE	I002		36" x 84"	1 1/2"	A	WD	FF	F1	HM	FF	DH02	DJ02			CR01-2	X	X					
I002-C	CORRIDOR	IC001		STUDY HALL/ PRESENTATION SPACE	I002		36" x 84"	1 1/2"	E	WD	FF	F1	HM	FF	DH02	DJ02			CR01-1	X	X	X				
I006	CORRIDOR	IC001		CULINARY ARTS KITCHEN	I006		36" x 84"	1 1/2"	E	WD	FF	F1	HM	FF	DH02	DJ02			CR01-4	X	X	X				
I006-A	CULINARY ARTS KITCHEN	1006		CULINARY ARTS CAFE	I004		44 1/16" x 126 1/2"			ALUM/ GL	FF		ALUM.	FF					CR06	X	X	X				
I006-B	CULINARY ARTS KITCHEN	1006		CULINARY ARTS CAFE	I004		44 1/16" x 126 1/2"			ALUM/ GL	FF		ALUM.	FF					CR06	X	X	X				
I006-C	CULINARY ARTS KITCHEN	1006		DRY ST.	I006b		36" x 84"	1 1/2"	A	ALUM/ GL	FF	F1	HM	FF	DH02	DJ02			CR01-2	X	X	X				
I007	CORRIDOR	IC001		STUDENT ART GALLERY	I007		72" x 126 1/2"			ALUM/ GL	FF		ALUM.	FF					CR06-1							
I008	CORRIDOR	IC002		S.T.E.A.M. LAB	I008		36" x 84"	1 1/2"	A	WD	FF	F1	HM	FF	DH02	DJ02			CR01	X	X	X				
I008-A	CORRIDOR	IC001		S.T.E.A.M. LAB	I008		36" x 84"	1 1/2"	E	WD	FF	F1	HM	FF	DH02	DJ02			CR01	X	X	X				
I008-B	S.T.E.A.M. LAB	I008		STORAGE	I008b		36" x 84"	1 1/2"	A	WD	FF	F1	HM	FF	DH02	DJ02			CR01	X	X	X				
I008-C	STAIR B	ISB		SECURITY OFFICE	I008c		36" x 84"	1 1/2"	A	WD	FF	F1	HM	FF	DH02	DJ02			CR01	X	X	X				
I009	CORRIDOR	IC002		STUDY HALL/ STUDENT WORK SPACE	I009		36 9/16" x 126 1/2"			ALUM/ GL	FF		ALUM.	FF					CR01							
I011	CORRIDOR	IC006		SECURITY OFFICE	I011		36" x 84"	1 1/2"	E	WD	FF	F1	HM	FF	DH02	DJ02			CR01	X	X	X				
I011-A	CORRIDOR	IC004		TOILET	I011a		36" x 84"	1 1/2"	A	WD	FF	F1	HM	FF	DH05	DJ05			CR01-3	X	X	X				
I011-B	CORRIDOR	IC004		TOILET	I011b		36" x 84"	1 1/2"	A	WD	FF	F1	HM	FF	DH05	DJ05			CR01-3	X	X	X				
I012	CORRIDOR	IC004		TEACHER'S CONF. RM.	I012		36" x 84"	1 1/2"	E	WD	FF	F1	HM	FF	DH02	DJ02			CR01	X	X	X				
I012-A	STORAGE	I013a		TEACHER'S CONF. RM.	I012		(2) 24" x 80"	1 1/2"	B	WD	FF	F2	HM	FF	DH02	DJ02										
I013	CORRIDOR	IC004		CLASSROOM	I013		36" x 84"	1 1/2"	E	WD	FF	F1	HM	FF	DH02	DJ02										
I013-A	CLASSROOM	I013		I.T. CLOSET	I013b		36" x 84"	1 1/2"	A	WD	FF	F1	HM	FF	DH02	DJ02			CR01-2	X	X	X				
I013-B	CORRIDOR	IC001		TOILET	I013		36" x 84"	1 1/2"	A	WD	FF	F1	HM	FF	DH05	DJ05			CR01-3	X	X	X				
I013-C	CORRIDOR	IC001		TOILET	I013b		36" x 84"	1 1/2"	A	WD	FF	F1	HM	FF	DH05	DJ05			CR01-3	X	X	X				
I013-D	CORRIDOR	IC001		J.C.	I013k		36" x 84"	1 1/2"	A	WD	FF	F1	HM	FF	DH05	DJ05			CR01-3	X	X	X				
I013-K	TOILET	I013		CORRIDOR	IC001		36" x 84"	1 1/2"	A	WD	FF	F1	HM	FF	DH05	DJ05			CR01-3	X	X	X				
I014	CORRIDOR	IC004		CLASSROOM	I014		36" x 84"	1 1/2"	A	WD	FF	F1	HM	FF	DH02	DJ02			CR01	X	X	X				
I015	CLASSROOM	I015		CORRIDOR	IC004		36" x 84"	1 1/2"	A	WD	FF	F1	HM	FF	DH02	DJ02			CR01	X	X	X				
I016	CORRIDOR	IC004		HALLWAY	I016d		36" x 84"	1 1/2"	E	WD	FF	F1	HM	FF	DH02	DJ02			CR01	X	X	X				
I016-A	HALLWAY	I016a		UNION OFFICE	I016a		36" x 84"	1 1/2"	E	WD	FF	F1	HM	FF	DH02	DJ02			CR01	X	X	X				
I016-B	HALLWAY	I016d		UNION OFFICE	I016b		36" x 84"	1 1/2"	E	WD	FF	F1	HM	FF	DH02	DJ02										

MARK	DATE	DESCRIPTION
5	04-21-2025	Bid Addendum #5

[illegible]

NY PROFESSIONAL ENGINEER Lic. No. 095440			
"IN ACCORDANCE WITH 145, SECTION 7209 OF THE NYS EDUCATION LAW, ALTERATION OF THIS DOCUMENT EXCEPT BY LICENSE PROFESSIONAL IS ILLEGAL."			
DESIGNED BY: CJM	DRAWN BY: CJM	CHECKED BY:	REVIEWED BY: JRM
PROJECT No.: WPSD2203	DATE: MARCH 2025	SCALE: AS SHOWN	

**WHITE PLAINS HIGH SCHOOL
ADDITION**

**550 North Street
White Plains, NY 10605**

CONTRACT P
PLUMBING CONTRACT

STATUS	FINAL BID DOCUMENT
--------	---------------------------

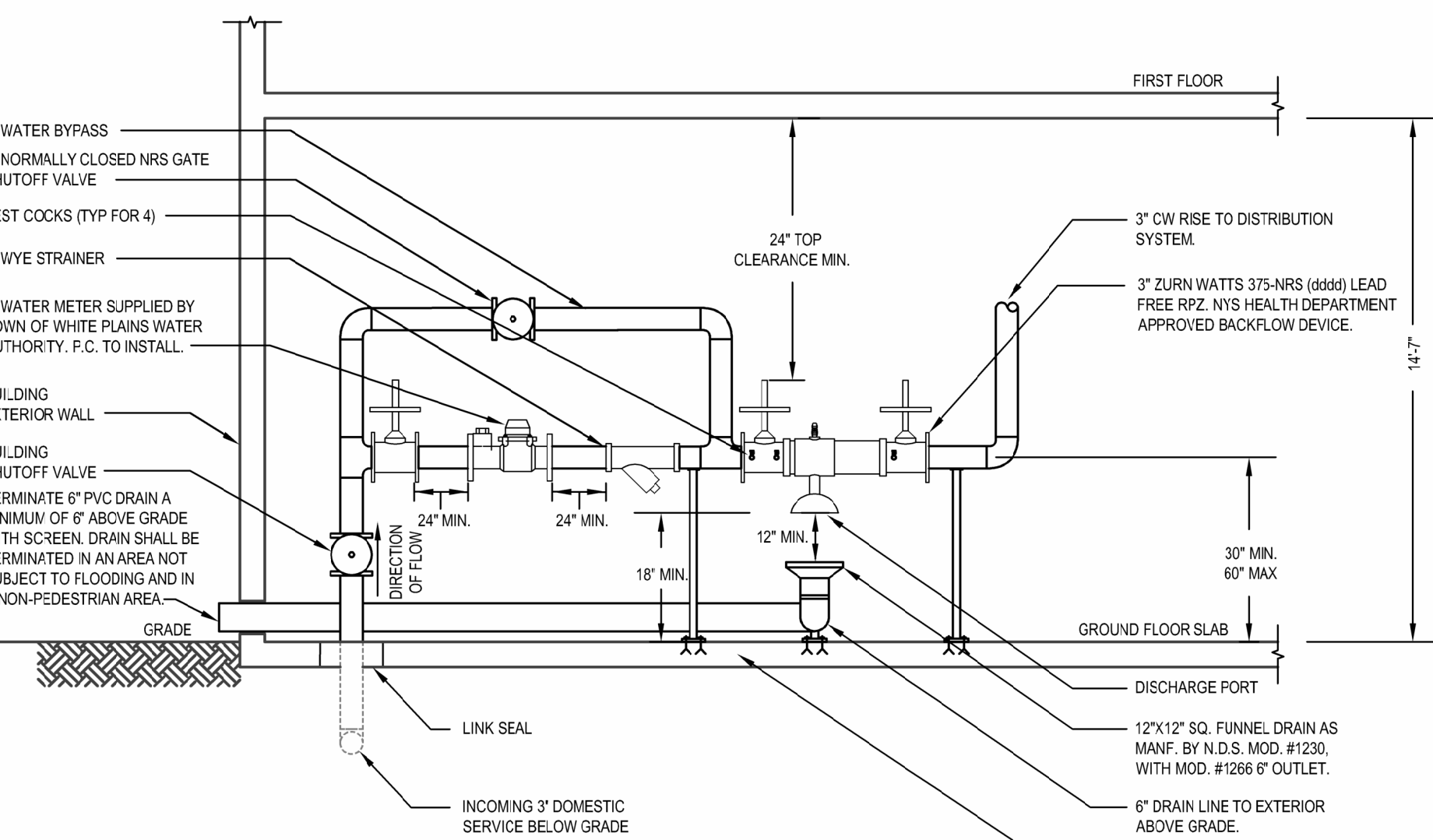
PLUMBING SITE PLAN

DRAWING No. _____

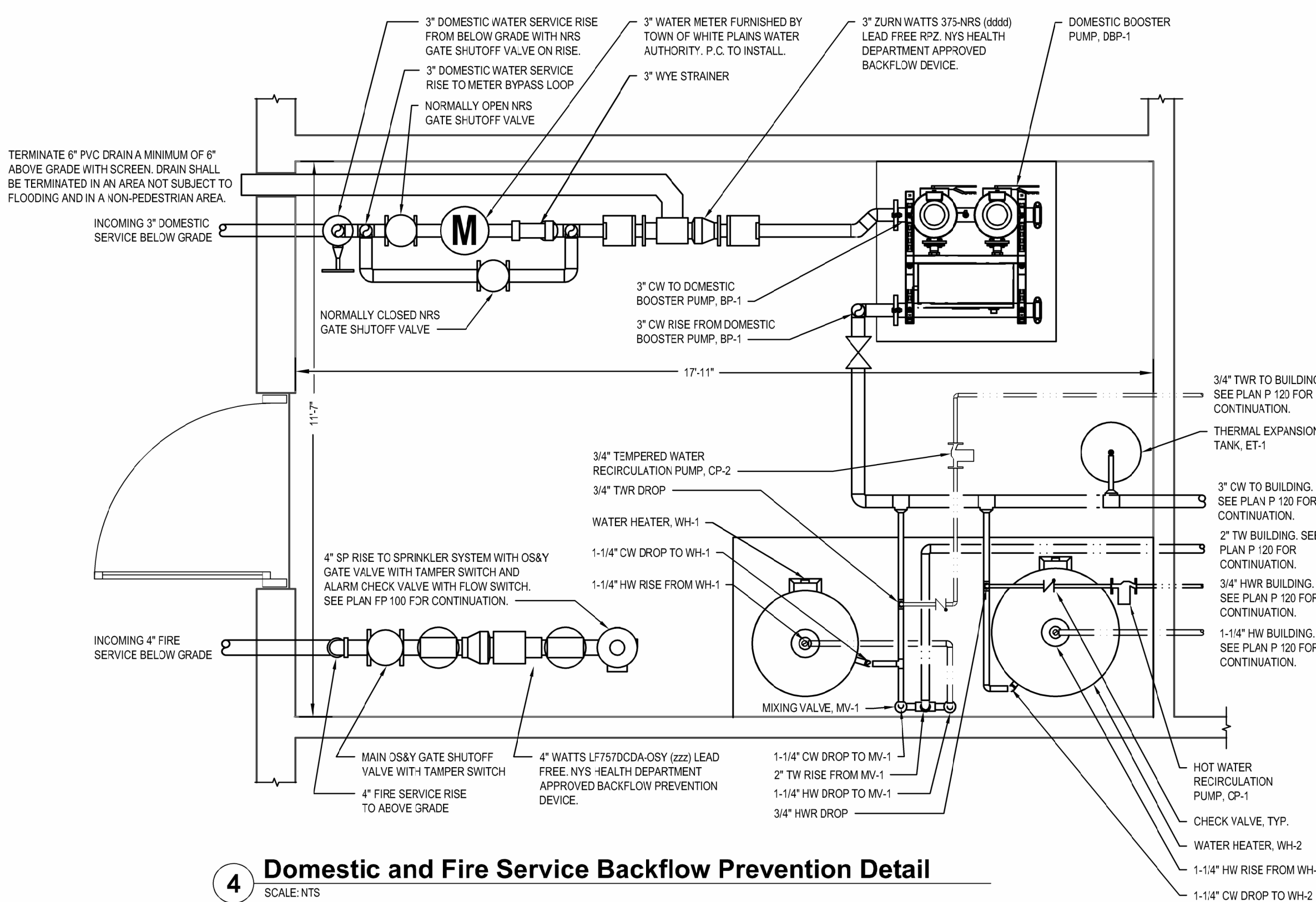
Technical drawing of a fire service connection assembly. The drawing shows a cross-section of the assembly, including the building exterior wall, ground floor slab, and the fire service connection. Key components and dimensions are labeled:

- 14" TYP.**: Dimension for the vertical clearance of the fire service connection.
- FIRST FLOOR**: Label for the top of the building structure.
- 4" SPRINKLER PIPE TO WET SYSTEM**: Label for the pipe connecting to the wet system.
- 3" TYP. CLEARANCE MIN.**: Dimension for the clearance between the fire service connection and the building exterior wall.
- 4" WATTS LF757DCCA-05Y (222) LEAD FREE, NYN HEALTH DEPARTMENT APPROVED BACKFLOW PREVENTION DEVICE**: Label for the backflow prevention device.
- TEST COCKS (TYP FOR 4)**: Label for the test cocks.
- BUILDING EXTERIOR WALL**: Label for the wall of the building.
- 30" MIN. 60" MAX.**: Dimension for the length of the fire service connection.
- DIRECTION OF FLOW**: Label for the arrow indicating the direction of flow.
- LINK SEAL**: Label for the link seal.
- GRADE**: Label for the ground level.
- GROUND FLOOR SLAB**: Label for the floor slab.
- 1-1/2" GALV. STL. PIPE SUPPORT SECURE TO FLOOR SLAB WITH 3/8" S.S. EXP. BOLTS TYP.**: Label for the support structure.
- INCOMING 4" FIRE SERVICE BELOW GRADE**: Label for the fire service line entering the building.

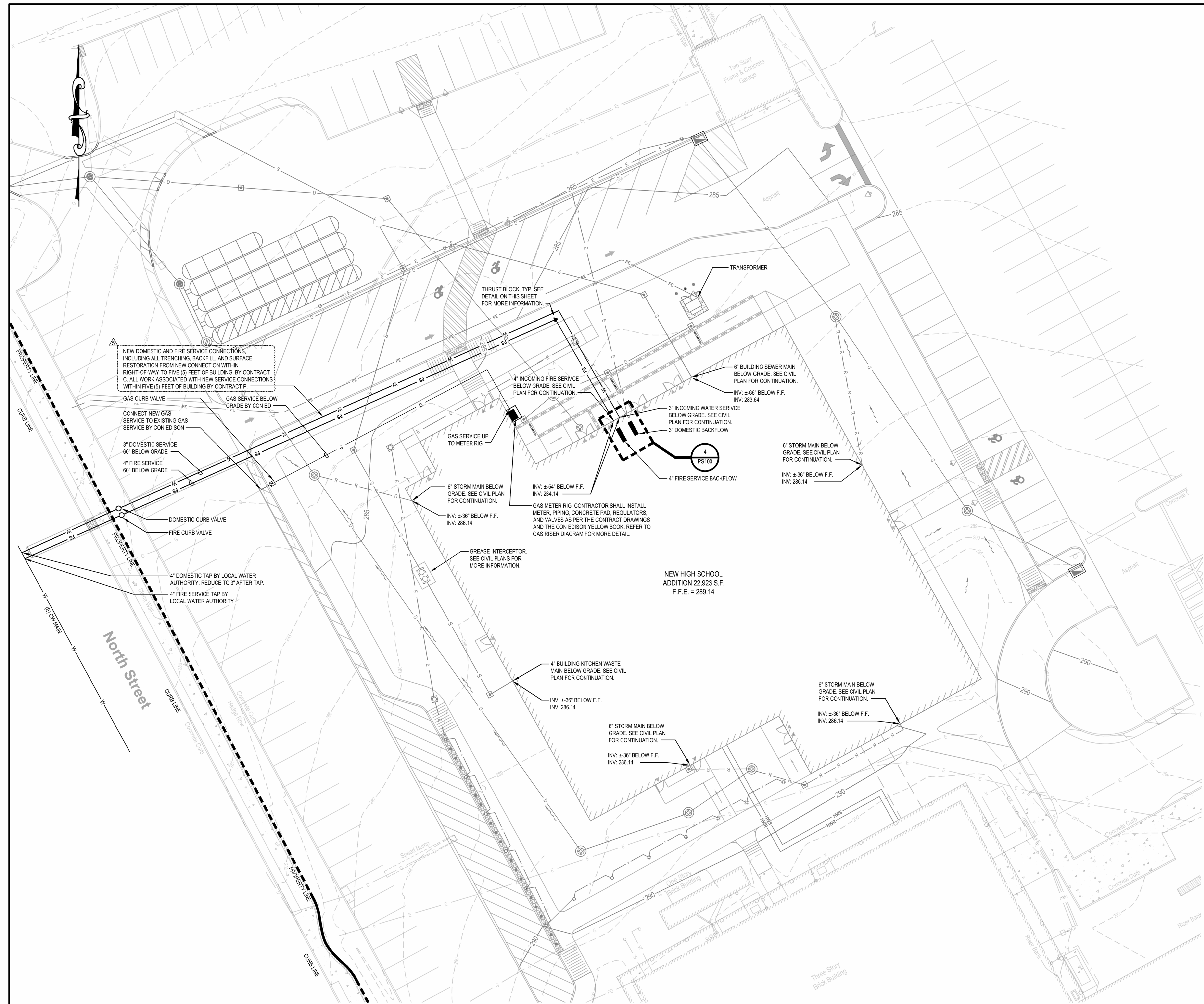
2 Fire Service Backflow Elevation Prevention Detail



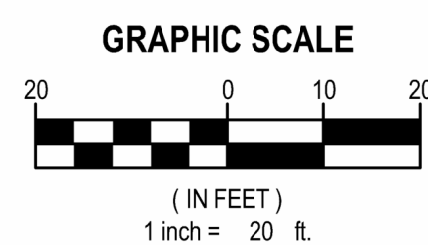
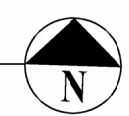
3 Domestic Service Backflow Elevation Prevention Detail



4 Domestic and Fire Service Backflow Prevention Detail



1 Domestic Service Backflow Prevention Detail



DOMESTIC WATER AND FIRE SERVICE BACKFLOW PREVENTION DEVICE GENERAL NOTES

1. INSTALLATION SHALL BE IN ACCORDANCE WITH APPLICABLE COUNTY DEPARTMENT OF HEALTH SERVICES, NEW YORK STATE HEALTH DEPARTMENT REGULATIONS, AND WHITE PLAINS WATER DEPARTMENT REGULATIONS.
2. ALL CONNECTIONS ON THE WATER SERVICE SHALL BE DOWNSTREAM FROM THE BACKFLOW PREVENTION DEVICE, BYPASSING OF A BACKFLOW PREVENTION DEVICE IS A VIOLATION OF NEW YORK STATE HEALTH DEPARTMENT RULES AND REGULATIONS.
3. THE CONTRACTOR SHALL ENGAGE A CERTIFIED BACKFLOW PREVENTION DEVICE TESTER TO TEST THE BACKFLOW PREVENTION DEVICE AFTER INSTALLATION. IT IS THE OWNER'S RESPONSIBILITY TO HAVE EACH DEVICE CERTIFIED AT LEAST ANNUALLY WITH RESULTS REPORTED TO THE WHITE PLAINS WATER DEPARTMENT AND TO THE COUNTY DEPARTMENT OF HEALTH ON NY STATE FORM 215. CONTRACTOR SHALL BE RESPONSIBLE FOR ALL RELATED TESTING AND APPLICATION FEES.
4. SHUT-OFF VALVES ON DOMESTIC WATER SERVICE BPP DEVICE SHALL BE NRS AND SHUT-OFF VALVES FOR THE IRRIGATION BPP TO BE BALL VALVES SHALL BE SAME MANUFACTURER AS BPP DEVICE.
5. SHUT-OFF VALVES ON FIRE SERVICE BPP DEVICE SHALL BE OS&Y TYPE AND SHALL BE SAME MANUFACTURER AS BPP DEVICE.
6. TEST COCKS ON THE BPP DEVICE SHALL BE POSITIONED TO FACILITATE TESTING WITH 30" MINIMUM CLEARANCE.
7. BACKFLOW DEVICES MAY NOT BE MODIFIED IN ANY WAY DURING INSTALLATION.
8. 2" DOMESTIC WATER SERVICE TO BE COPPER TYPE K, 4" DOMESTIC WATER SERVICE AND 6" FIRE SERVICE TO BE CLASS 3 DUCTILE IRON AND SHALL HAVE MINIMUM OF 4" OF COVER.
9. PIPING SHALL BE UNBRANCHED AND UNRESTRICTED FROM THE SUPPLY MAIN TO THE DEVICE, EXCEPT FOR THE METER ON THE DOMESTIC SERVICE.
10. CONTRACTOR SHALL PROVIDE APPROPRIATE FLOORWALL SUPPORTS FOR ALL DEVICES AND PIPING. ALL SUPPORT HANGERS/CLAMPS SHALL BE GALVANIZED STEEL.
11. BACKFLOW DEVICES SHALL BE APPROVED BY THE UNIVERSITY OF SOUTHERN CALIFORNIA PIPING FOR CROSS CONNECTION AND AEROSOL AND HYDRAULIC RESEARCH.
12. THE ROOM AND ENCLOSURE WHERE THE DEVICES ARE LOCATED WILL HAVE ADEQUATE LIGHT PROVIDED TO PERFORM MAINTENANCE AND ADEQUATE VENT TO PREVENT FREEZING.
13. DEVICE MAY NOT BE INSTALLED HIGHER THAN 5'-0" ABOVE THE FLOOR OR A FIXED PLATFORM IS REQUIRED.
14. WATER SERVICE LINES TO MAINTAIN A MINIMUM CLEARANCE OF 12'-0" FROM GAS SERVICE, SEWER LINES, ORANGE LINES, UTILITY POLES AND TREES, ETC.
15. ALL 4" PIPING 90 DEGREE ELBOWS WILL NEED TO HAVE THRUST BLOCKS AND BE RODDED WITH 3/4" RODS.
16. ALL ASSEMBLIES MUST BE INSTALLED WITH THE MANUFACTURER SUPPLIED RESILIENT SEATED SHUT-OFF VALVES INTEGRAL TO THE ASSEMBLY.

NOTES:

1. CONCRETE BLOCKING SHALL BE APPLIED ON ALL PIPE LINES 4-INCH IN DIAMETER AND LARGER AT ALL TEES, PLUGS, CAPS, AND AT BENDS DEFLECTING 22 1/2 DEGREES OR MORE. BLOCKING SHALL BE OF CONCRETE OF A MIX HAVING A COMPRESSIVE STRENGTH OF NOT LESS THAN 4,000 PSI, AND BLOCKING SHALL BE PLACED BETWEEN SOLID GROUND AND THE FITTING TO BE ANCHORED TO THE SOLID GROUND, SO PLACED THAT THE PIPE AND FITTING JOINTS WILL BE ACCESSIBLE FOR REPAIR.
2. THE SQUARE FOOT BEARING AREA OF THE BLOCKING ON SOLID GROUND SHALL BE INDICATED IN THE TABLE SHOWN TO THE RIGHT OR AS INDICATED BY THE ENGINEER.
3. FOR ALL VERTICAL BENDS, 3/4-INCH DIAMETER THE RODS AND PIPE CLAMPS OR RETAINER DIAMETERS SHALL BE SPECIFIED IN ADDITION TO THE CONCRETE BLOCKING SPECIFIED ABOVE FOR BENDS DEFLECTING 22-1/2 DEGREES OR MORE.

PIPE SIZE	DEAD END OR TEE	90° BEND	45° BEND	22 1/2° BEND
4"	1	1-1/2	3/4	1/2
6"	2	3	2	1
8"	4	5-1/2	3	1
10"	6	8-1/2	4-1/2	2-1/2
12"	9	12	6-1/2	3-1/2
16"	12	15-1/2	8-1/2	4-1/2

Thrust Block Location Detail

SCALE: NTS

