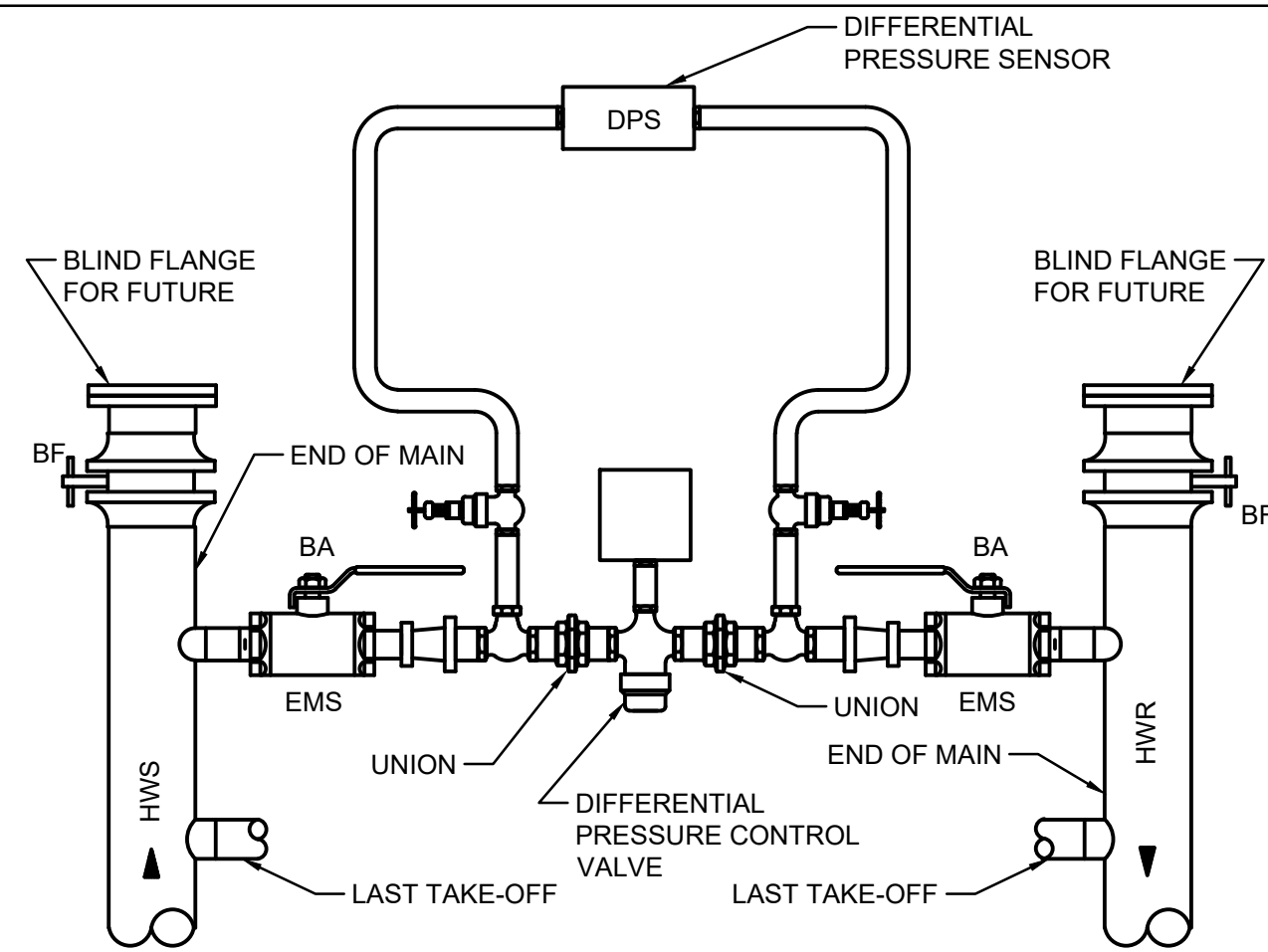
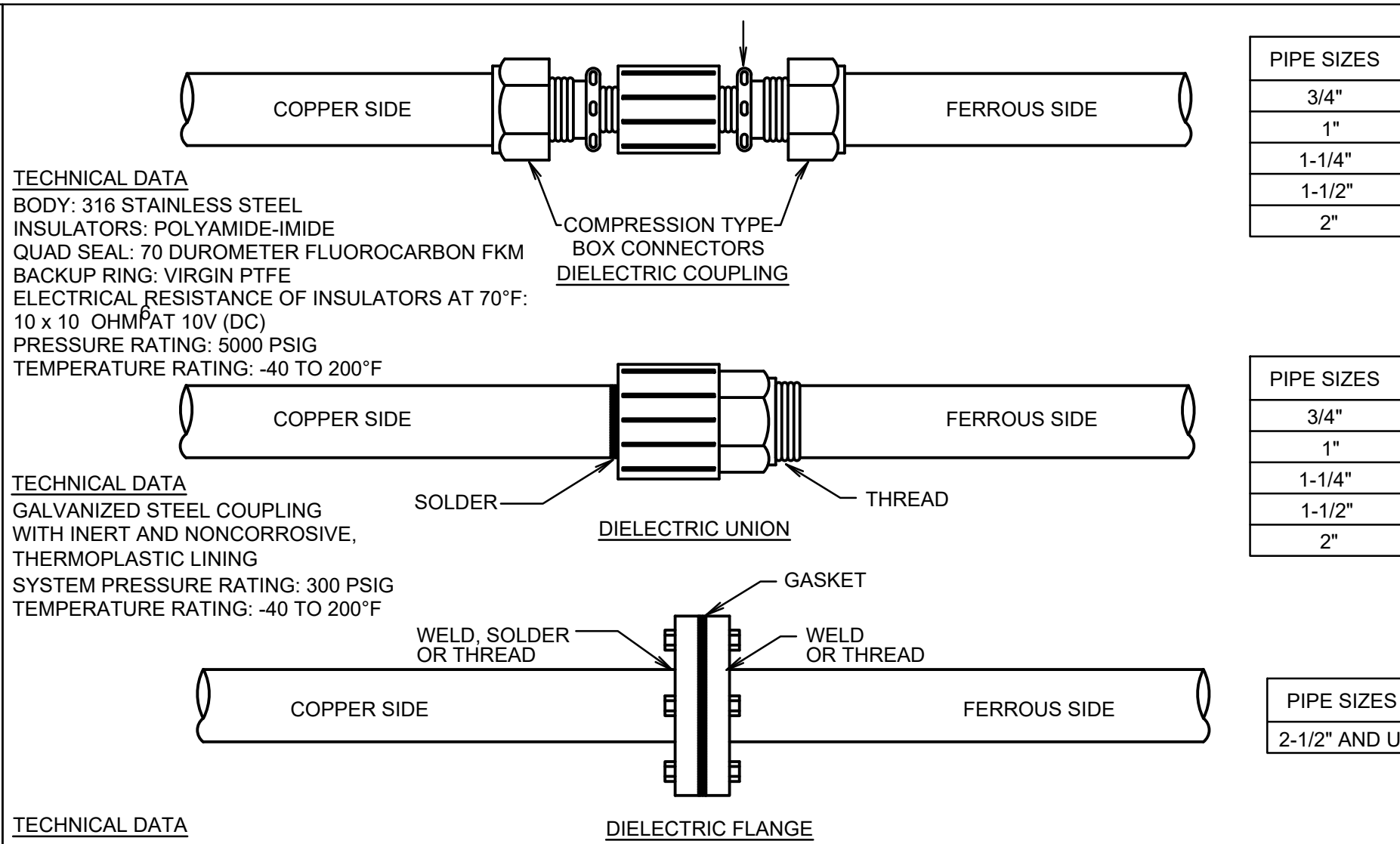


1 **TYPICAL HANGER EXPANSION SHIELD DETAIL**
SCALE: NTS

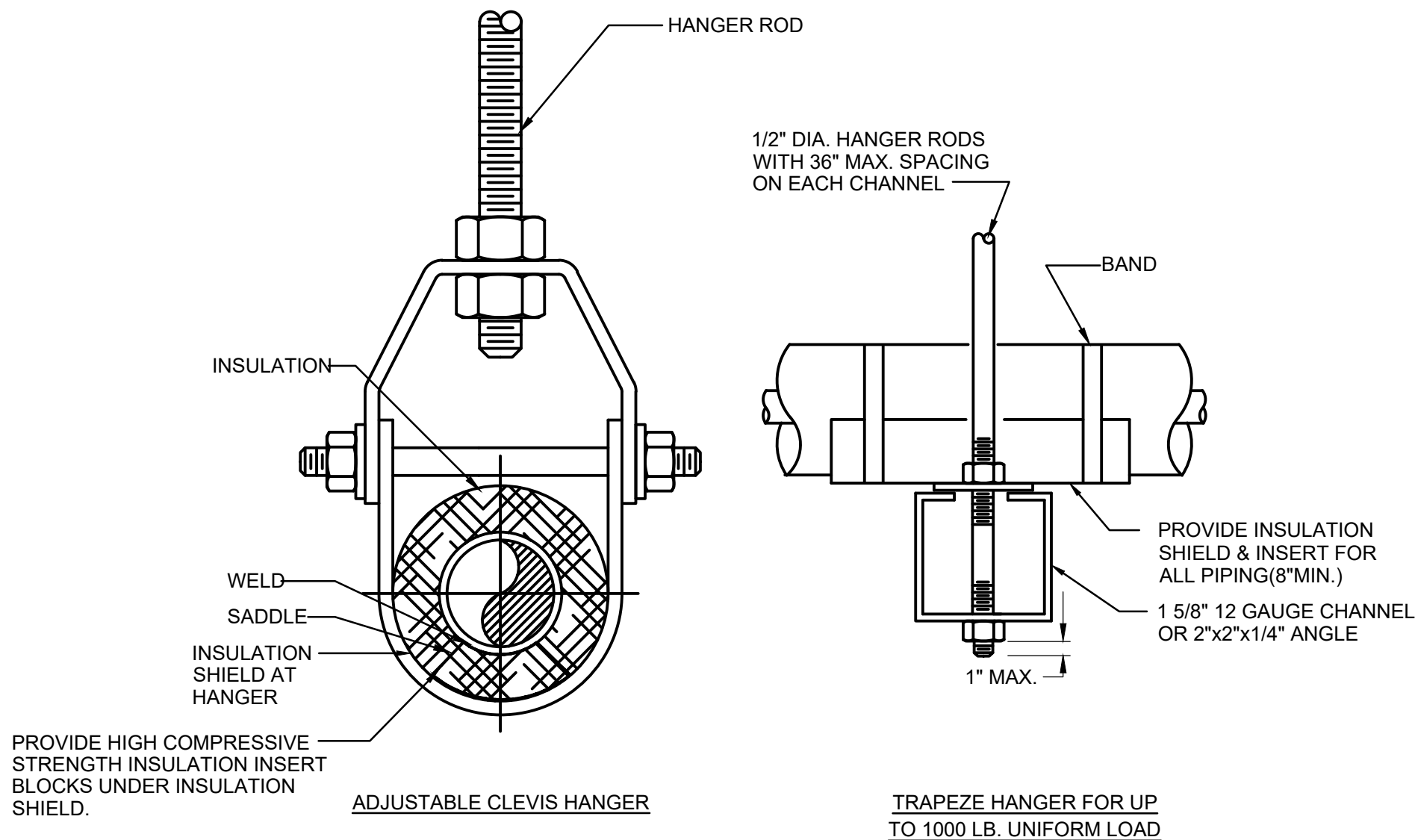


- NOTES:
1. PROVIDE DIFFERENTIAL PRESSURE CONTROL ON HOT WATER SYSTEMS.
 2. PROVIDE TEST PORTS TO ALLOW CALIBRATION FOR BALANCING CONTRACTOR.

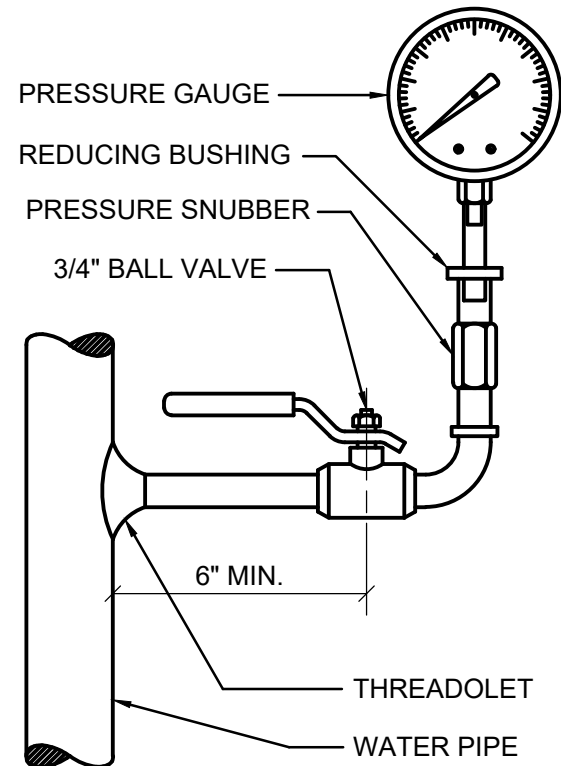
4 **TYPICAL HYDRONIC DIFFERENTIAL PRESSURE ASSEMBLY**
SCALE: NTS



7 **DIELECTRIC PIPE FITTING**
SCALE: NTS

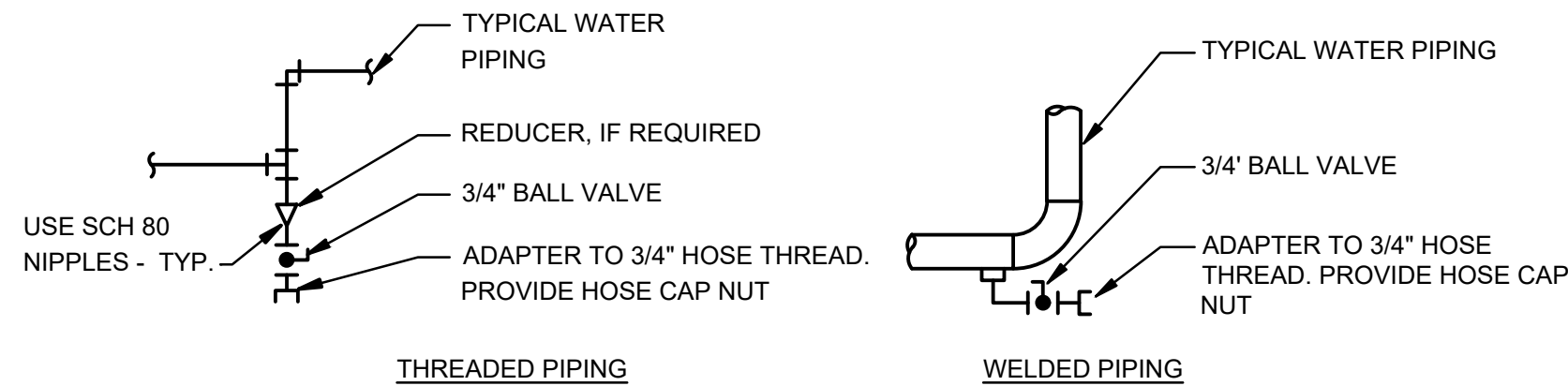


2 **TYPICAL PIPE CLEVIS HANGER DETAIL**
SCALE: NTS

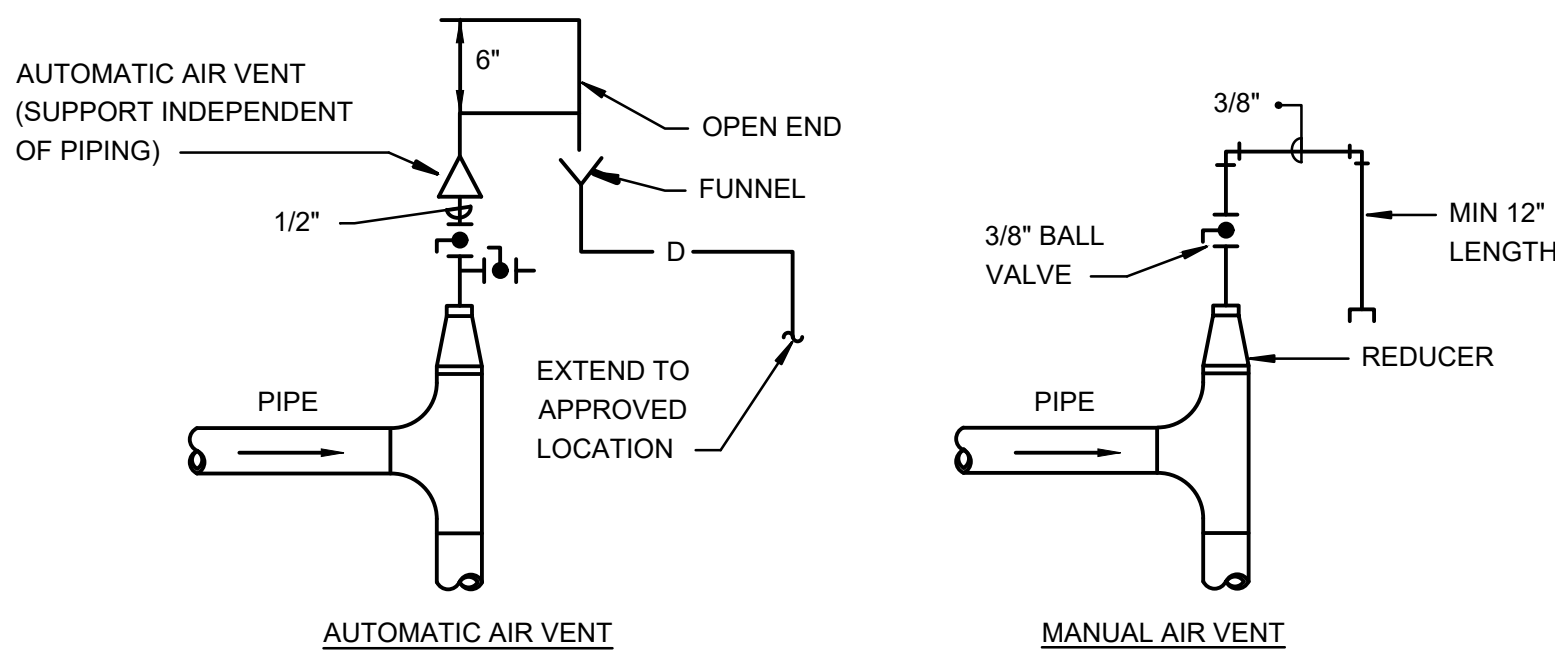


- NOTE:
1. FOR PIPES 2" AND SMALLER, USE FITTING INSTEAD OF THREADOLET OR WELDOLET.

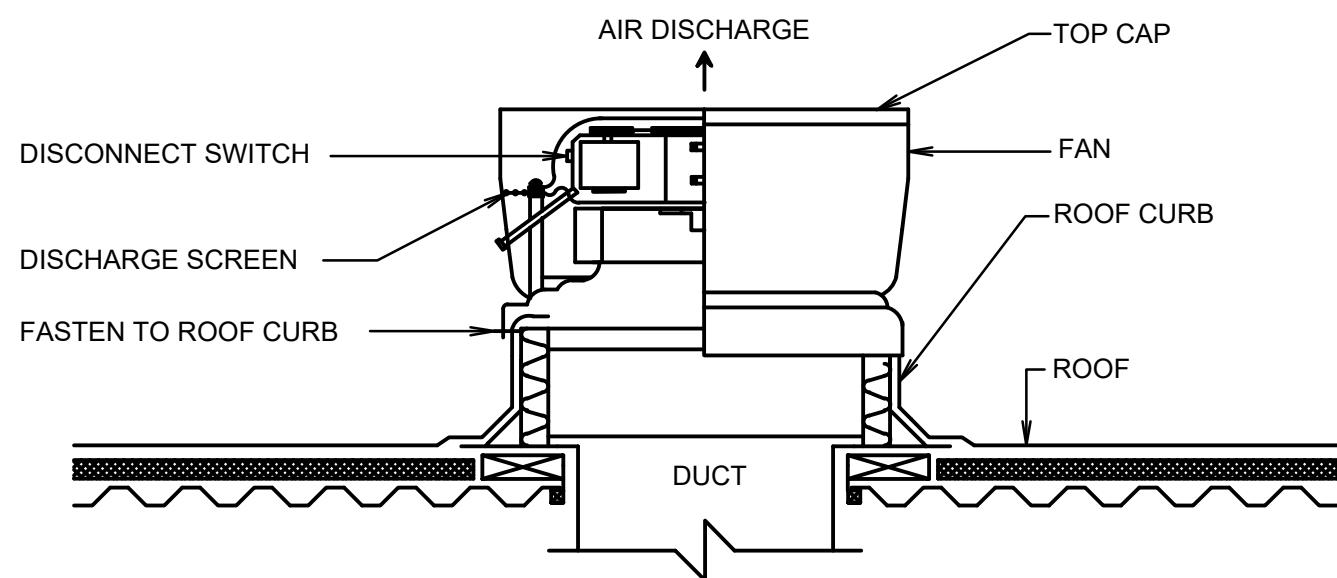
5 **PRESSURE GAUGE DETAIL**
SCALE: NTS



8 **DRAIN VALVE CONNECTION DETAIL**
SCALE: NTS

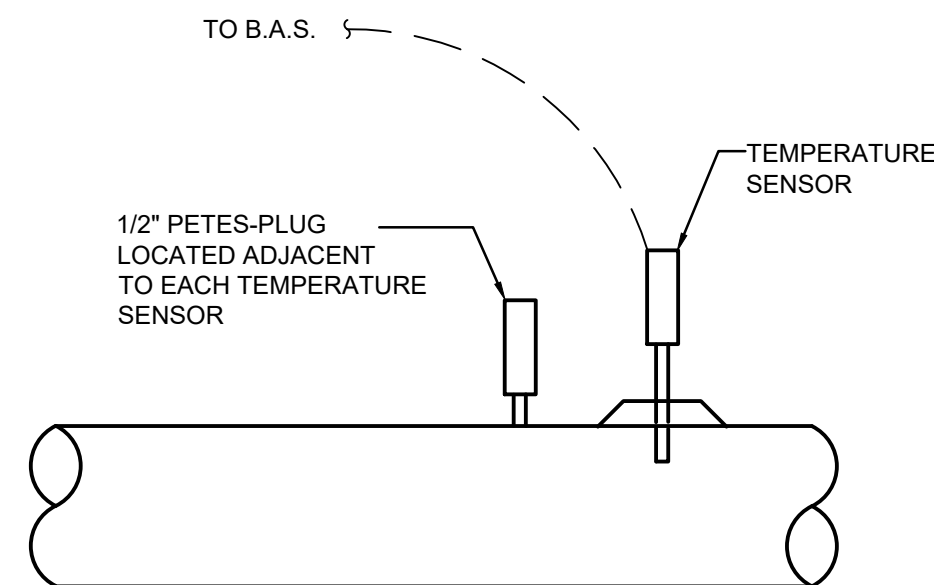


3 **TYPICAL AIR VENT DETAIL**
SCALE: NTS



- NOTES:
1. EXHAUST FAN SHALL BE PROVIDED WITH FACTORY-MOUNTED CONTROLS.
 2. ALL DISCONNECTS & CONTROL PANELS MOUNTED OUTDOORS SHALL BE PROVIDED WITH A NEMA 4X ENCLOSURE.

6 **TYPICAL ROOFTOP EXHAUST FAN**
SCALE: NTS



9 **TYPICAL TEMPERATURE SENSOR INSTALLATION**
SCALE: NTS

TO THE BEST KNOWLEDGE, BELIEF AND PROFESSIONAL JUDGEMENT, THESE PLANS AND SPECIFICATIONS ARE IN COMPLIANCE WITH THE 2020 ENERGY CONSERVATION CONSTRUCTION CODE OF NEW YORK STATE.

ARCHITECT
di Domenico + Partners LLP
Architecture
Landscape Architecture
Planning
3743 Crescent Street, 3rd Floor
Long Island City, New York 11101
Tel 212-337-0400
Fax 212-337-3567

CIVIL PLANNING ENGINEER
JMC
JMC Planning Engineering Landscape
Architecture & Land Surveying, PLLC
120 Bedford Road
Armonk, New York 10504
Tel 914-273-5225
Fax 914-273-2102

MEP ENGINEER
Burns
BURNS ENGINEERING, PC.
1261 Broadway, Suite 708
New York, New York 10001
Tel 212-962-3503

STRUCTURAL ENGINEER
GEI
GEI50
1385 Broadway, 20th FL
New York, New York 10018
Tel 212-687-8282



MANHATTAN BEER DISTRIBUTORS
20 DUNNIGAN DRIVE
SUFFERN, NEW YORK

KEY PLAN

REV	DESCRIPTION	DATE
	ISSUED FOR DOB SUBMISSION	09/10/2021
	ISSUED FOR BID	10/15/2021
	ISSUED FOR PROGRESS	01/18/2022

DRAWN BY :

CHECKED BY :

APPROVED BY :

DATE :

SCALE :

DRAWING TITLE :

MECHANICAL
DETAILS SHEET #1

DWG NUMBER :

M-501