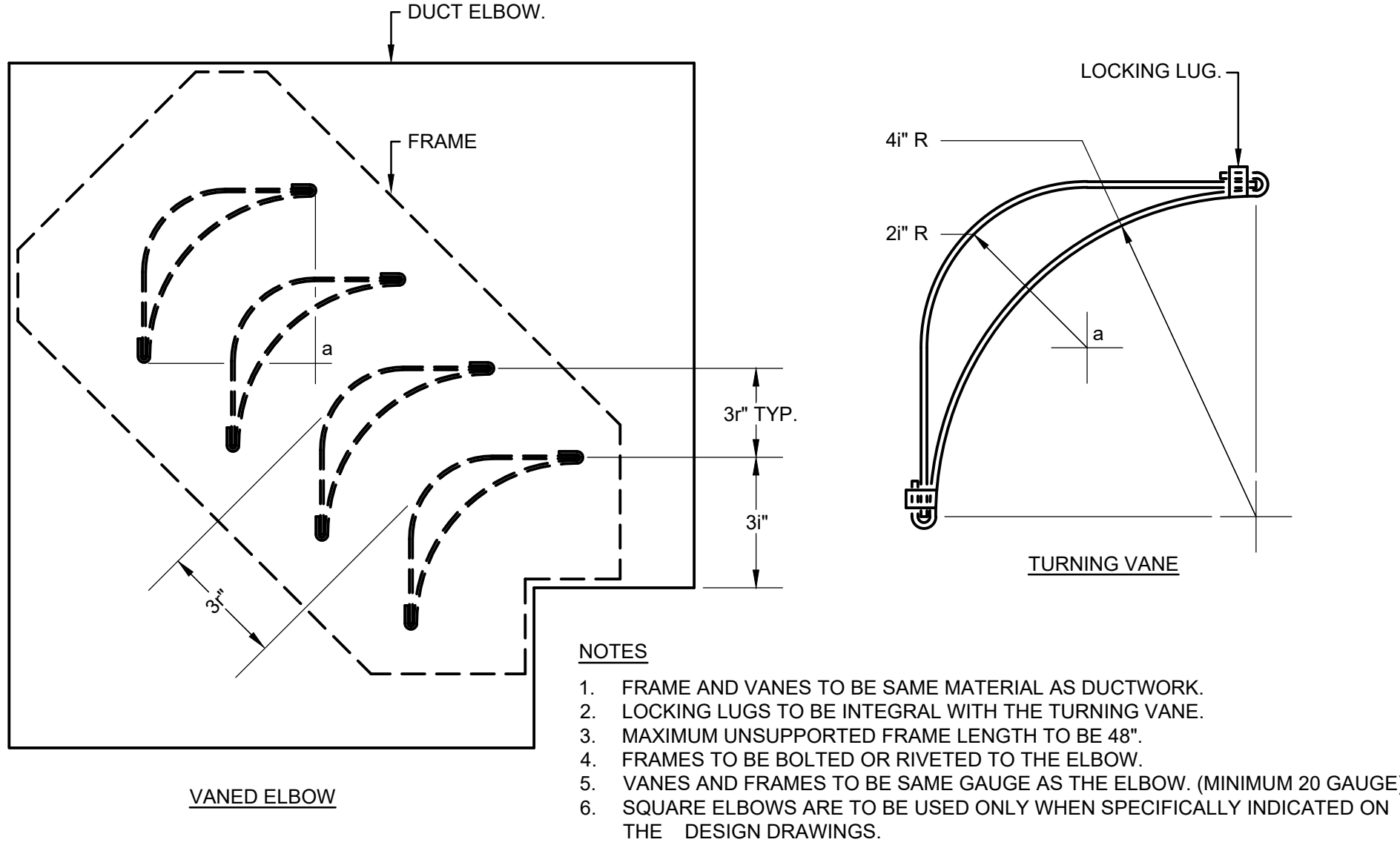
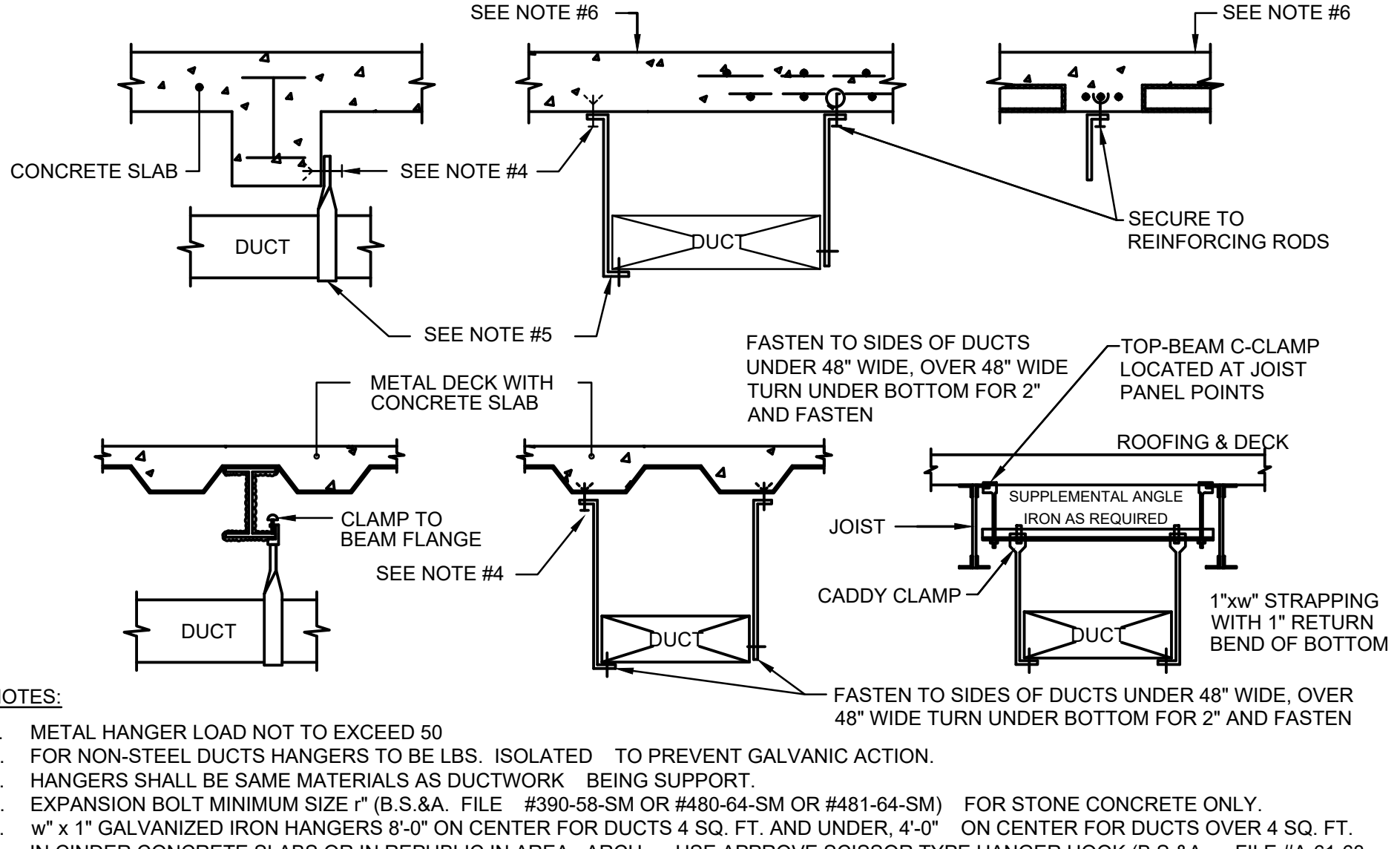


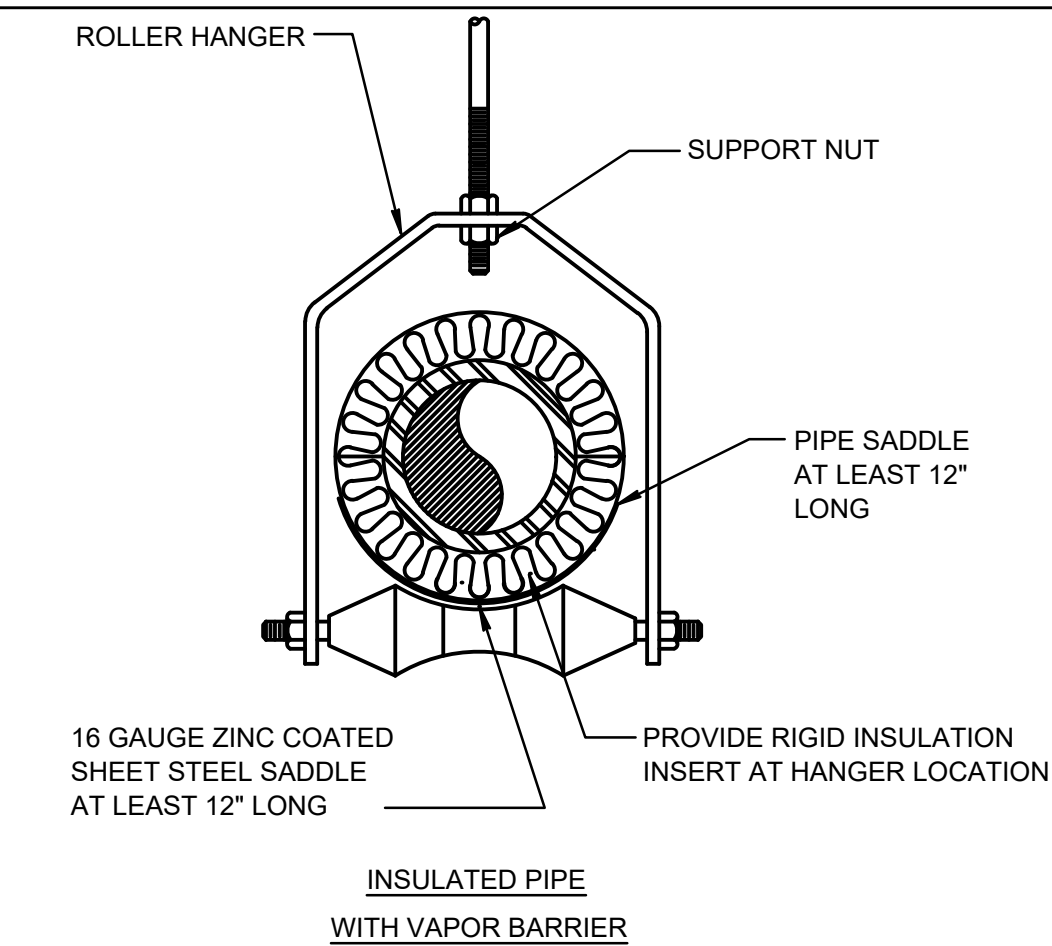
1 DUCT BRANCH TAKEOFF FOR LOW PRESSURE DUCTWORK  
M-502 SCALE: NTS



4 MITERED ELBOWS WITH DOUBLE THICKNESS TURNING VANES  
M-504 SCALE: NTS

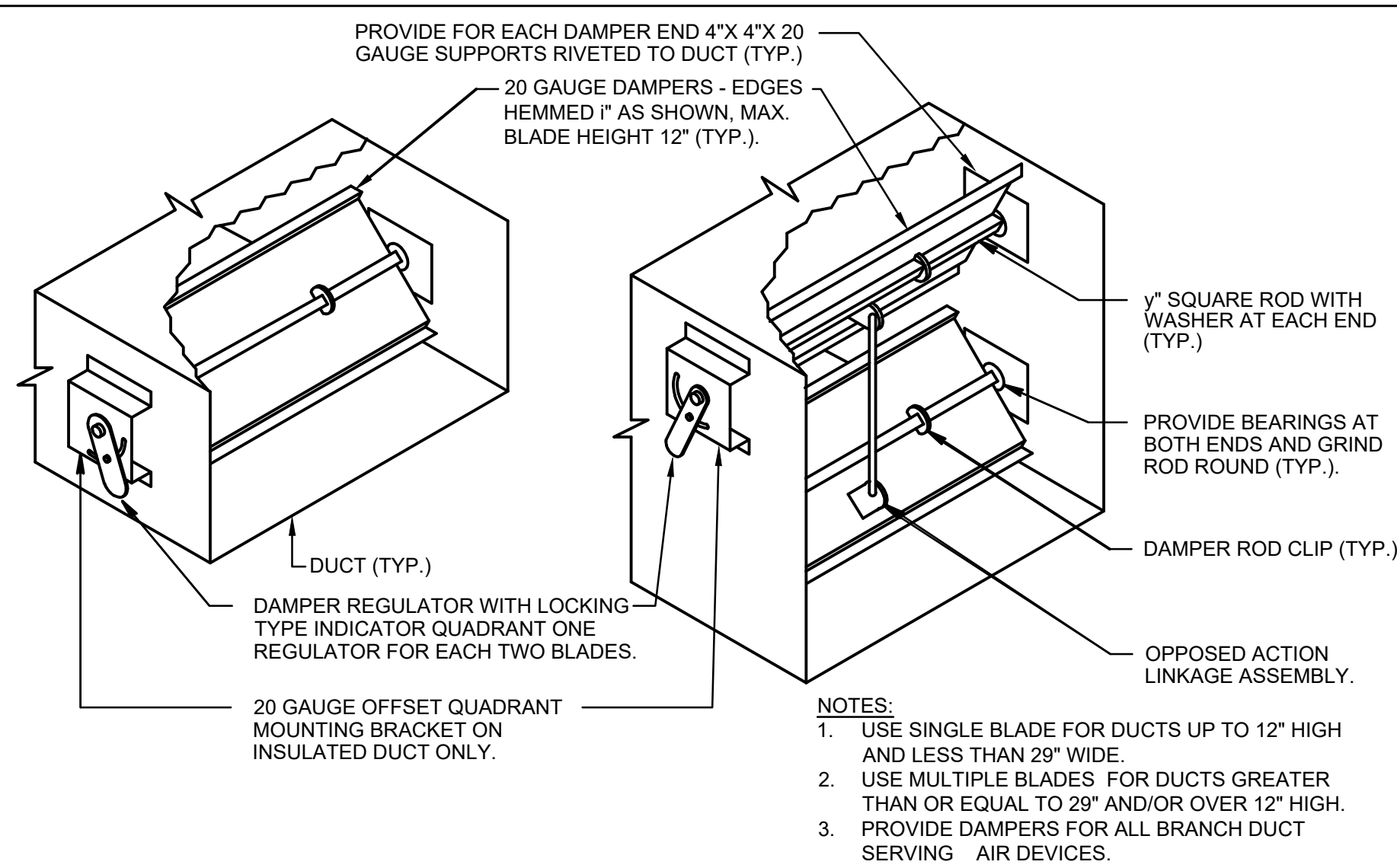


7 TYPICAL DUCT HANGING DETAILS  
M-502 SCALE: NTS



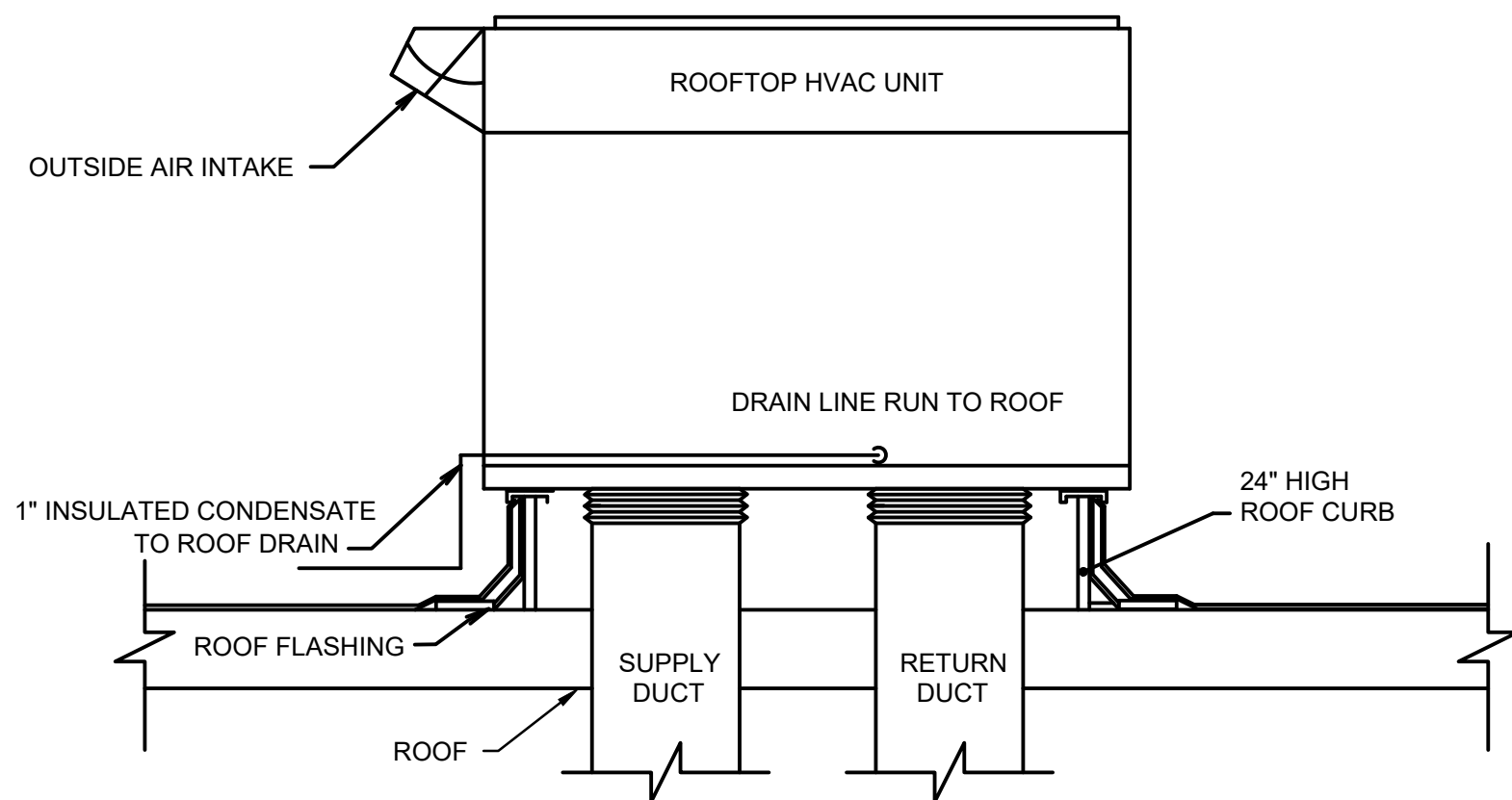
- NOTES:
1. PROVIDE ROLLER HANGERS FOR ALL HWS&R PIPING.

2 TYPICAL ROLLER HANGER SUPPORTS  
M-502 SCALE: NTS

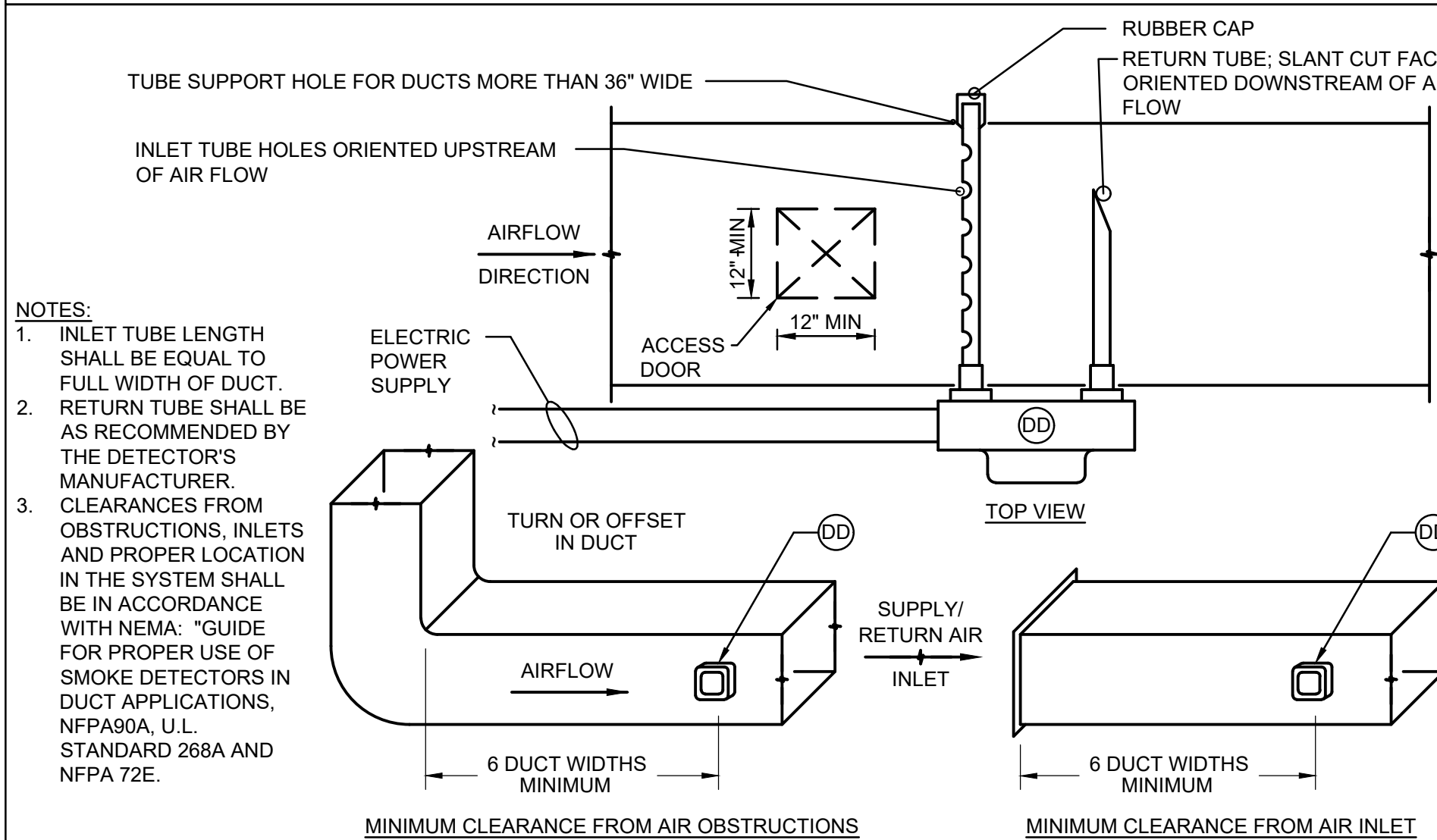


- NOTES:
1. USE SINGLE BLADE FOR DUCTS UP TO 12\"/>
  2. USE MULTIPLE BLADES FOR DUCTS GREATER THAN OR EQUAL TO 29\"/>
  3. PROVIDE DAMPERS FOR ALL BRANCH DUCT SERVING AIR DEVICES.

5 VOLUME DAMPER DETAIL  
M-502 SCALE: NTS

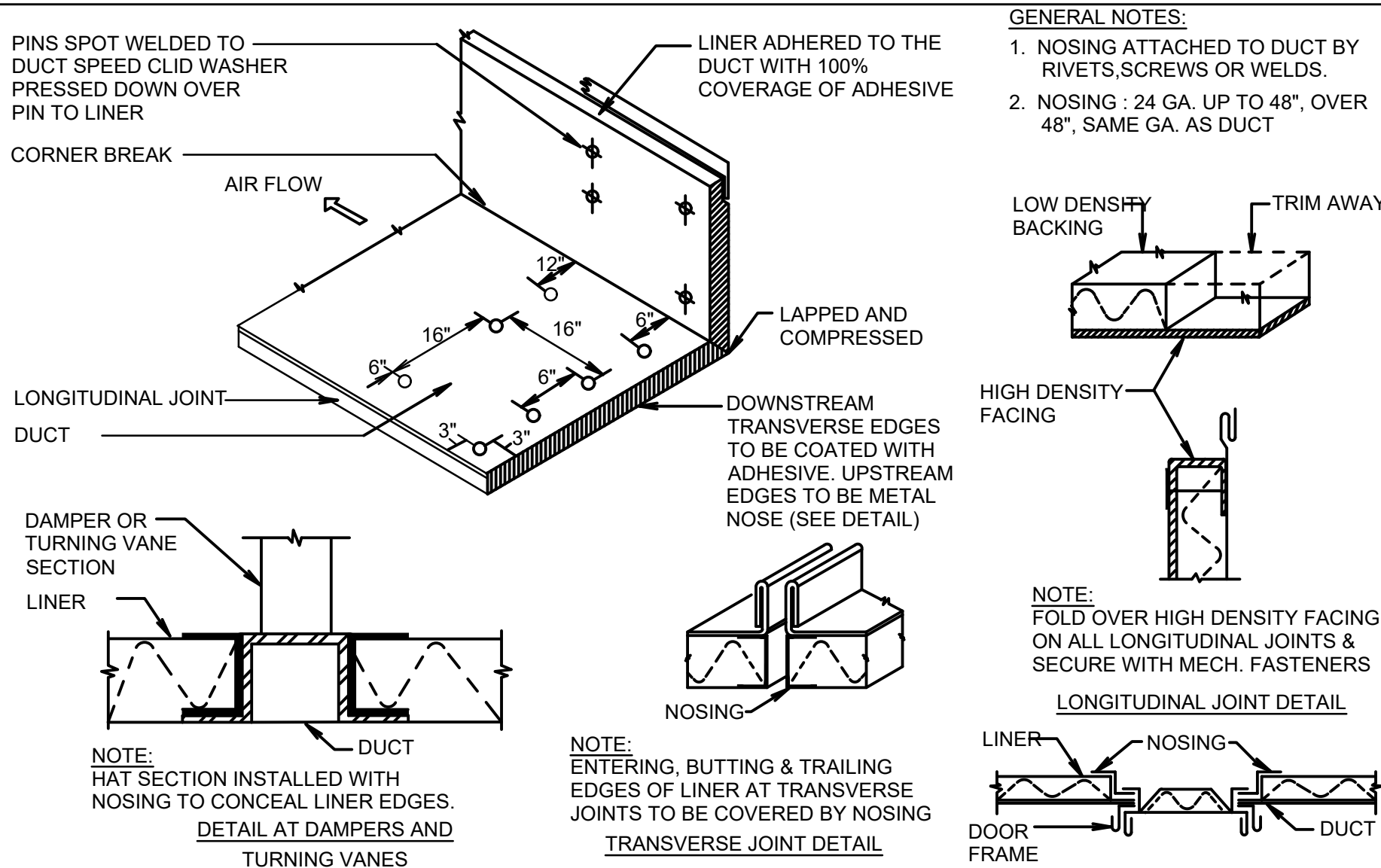


8 TYPICAL ROOFTOP UNIT DETAIL  
M-502 SCALE: NTS



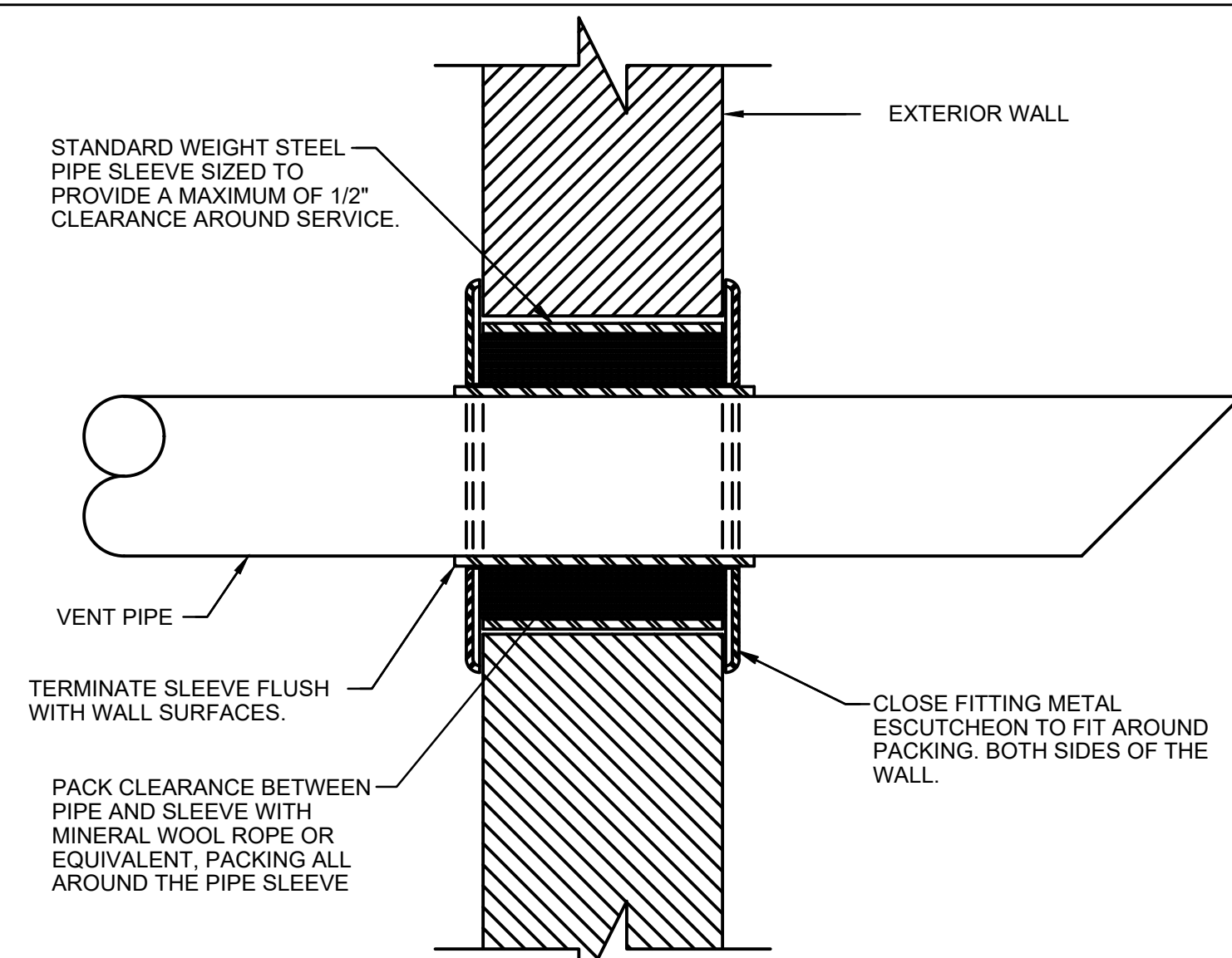
- NOTES:
1. INLET TUBE LENGTH SHALL BE EQUAL TO FULL WIDTH OF DUCT.
  2. RETURN TUBE SHALL BE AS RECOMMENDED BY THE DETECTOR'S MANUFACTURER.
  3. CLEARANCES FROM OBSTRUCTIONS, INLETS AND PROPER LOCATION IN THE SYSTEM SHALL BE IN ACCORDANCE WITH NEMA: "GUIDE FOR PROPER USE OF SMOKE DETECTORS IN DUCT APPLICATIONS, NFPA90A, U.L. STANDARD 268A AND NFPA 72E.

3 DUCT DETECTOR DETECTION INSTALLATION DETAIL  
M-502 SCALE: NTS



- NOTE: HAT SECTION INSTALLED WITH NOSING TO CONCEAL LINER EDGES.  
DETAIL AT DAMPERS AND TURNING VANES
- NOTE: ENTERING, BUTTING & TRAILING EDGES OF LINER AT TRANSVERSE JOINTS TO BE COVERED BY NOSING

6 ACOUSTICAL DUCT LINER DETAIL  
M-506 SCALE: NTS



9 INTAKE & EXHAUST VENT THRU-WALL  
M-502 SCALE: NTS

TO THE BEST KNOWLEDGE, BELIEF AND PROFESSIONAL JUDGEMENT, THESE PLANS AND SPECIFICATIONS ARE IN COMPLIANCE WITH THE 2020 ENERGY CONSERVATION CONSTRUCTION CODE OF NEW YORK STATE.

ARCHITECT  
**di Domenico + Partners LLP**  
Architecture  
Landscape Architecture  
Planning  
3743 Crescent Street, 3rd Floor  
Long Island City, New York 11101  
Tel 212-337-0400  
Fax 212-337-3567

CIVIL PLANNING ENGINEER  
**JMC**  
JMC Planning Engineering Landscape  
Architecture & Land Surveying, PLLC  
120 Bedford Road  
Armonk, New York 10504  
Tel 914-273-5225  
Fax 914-273-2102

MEP ENGINEER  
**Burns**  
BURNS ENGINEERING, PC.  
1261 Broadway, Suite 708  
New York, New York 10001  
Tel 212-962-3503

STRUCTURAL ENGINEER  
**GEI**  
GEI50  
1385 Broadway, 20th FL  
New York, New York 10018  
Tel 212-687-8282



MANHATTAN BEER DISTRIBUTORS  
20 DUNNIGAN DRIVE  
SUFFERN, NEW YORK

KEY PLAN

REV	DESCRIPTION	DATE
	ISSUED FOR DOB SUBMISSION	09/10/2021
	ISSUED FOR BID	10/15/2021
	ISSUED FOR PROGRESS	01/18/2022

DRAWN BY :

CHECKED BY :

APPROVED BY :

DATE :

SCALE :

DRAWING TITLE :

MECHANICAL  
DETAILS SHEET #2

DWG NUMBER :

M-502