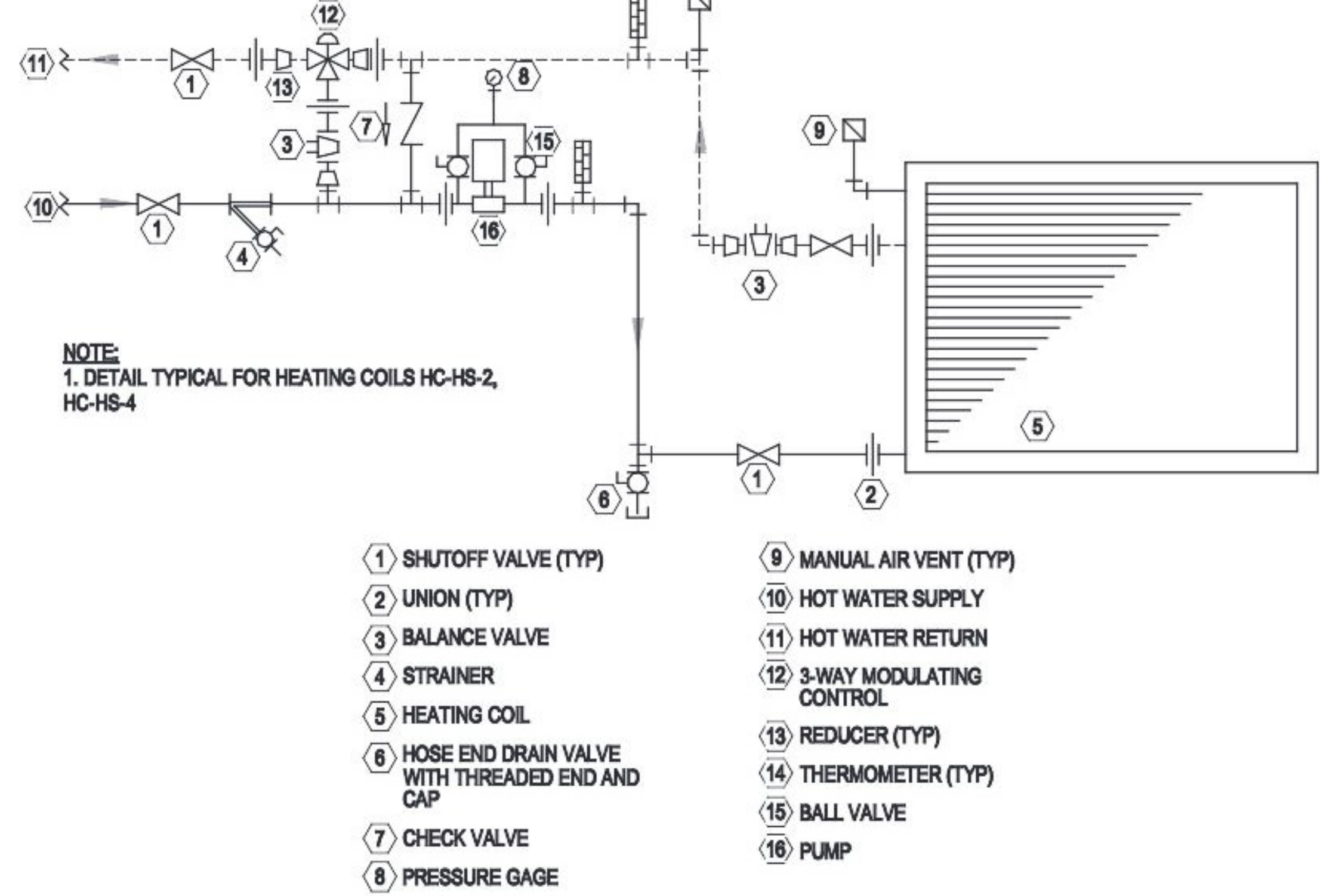
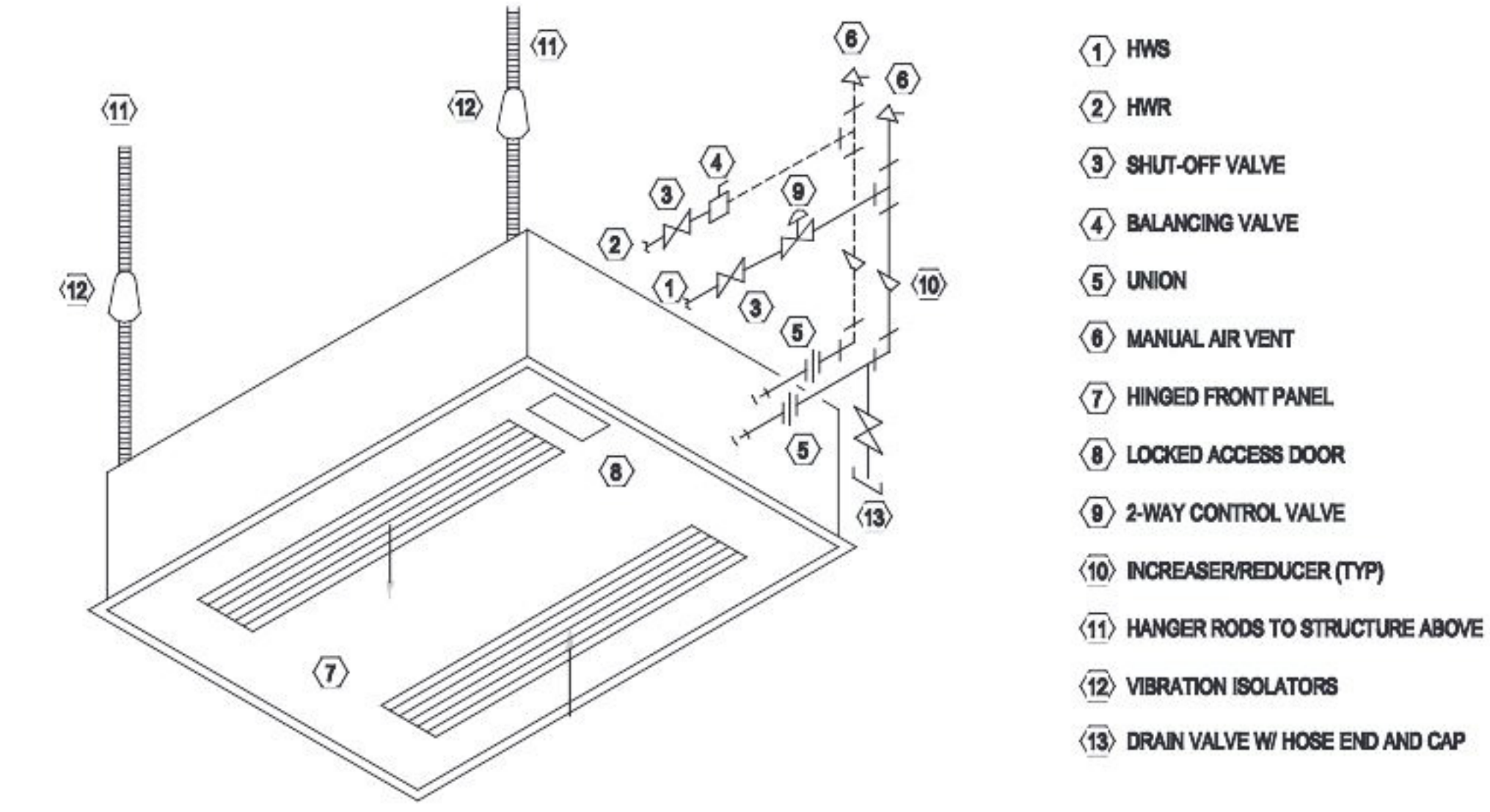


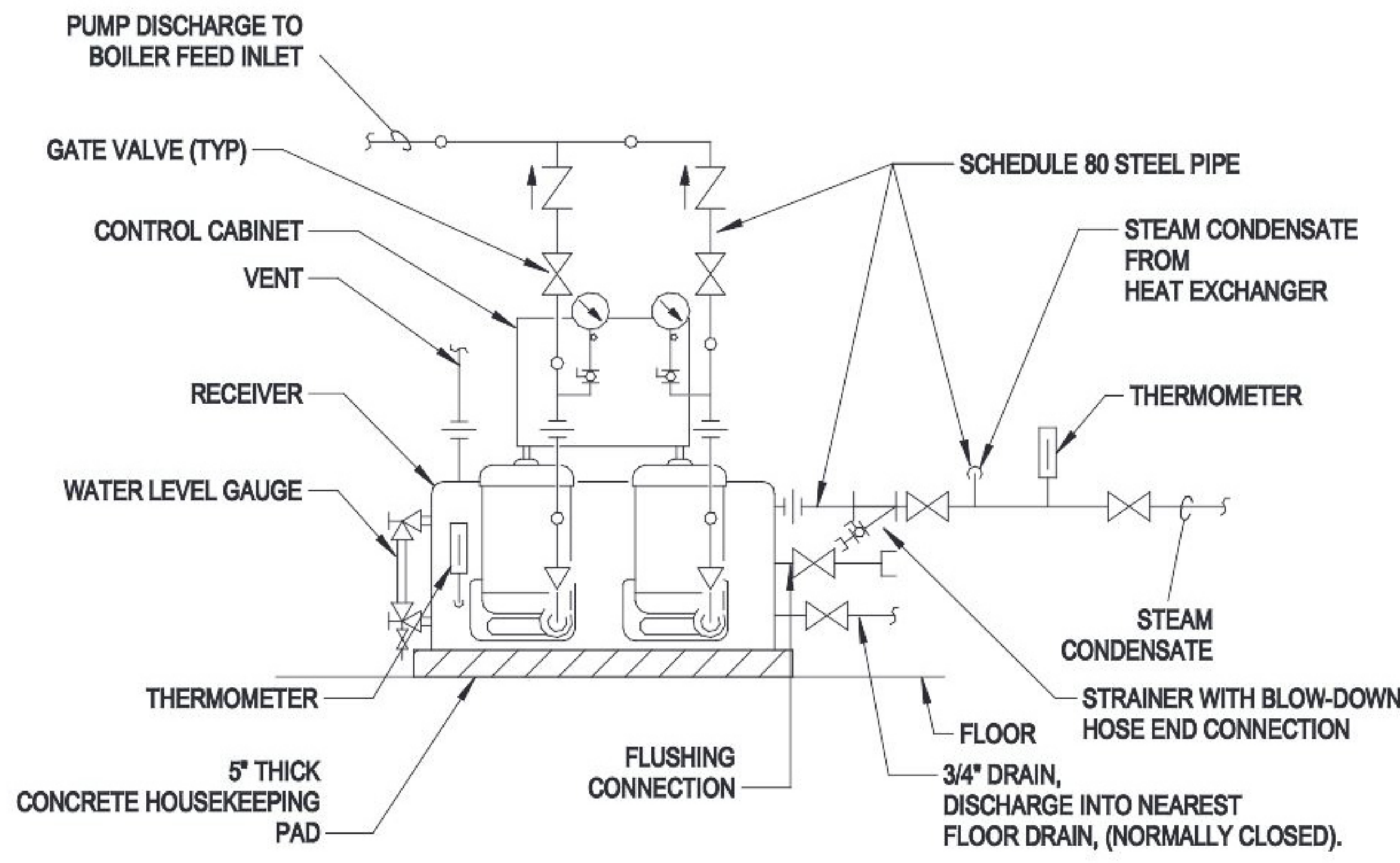
1 2-WAY CONTROL VALVE HEATING COIL DETAIL
SCALE: 3/8" = 1'-0"



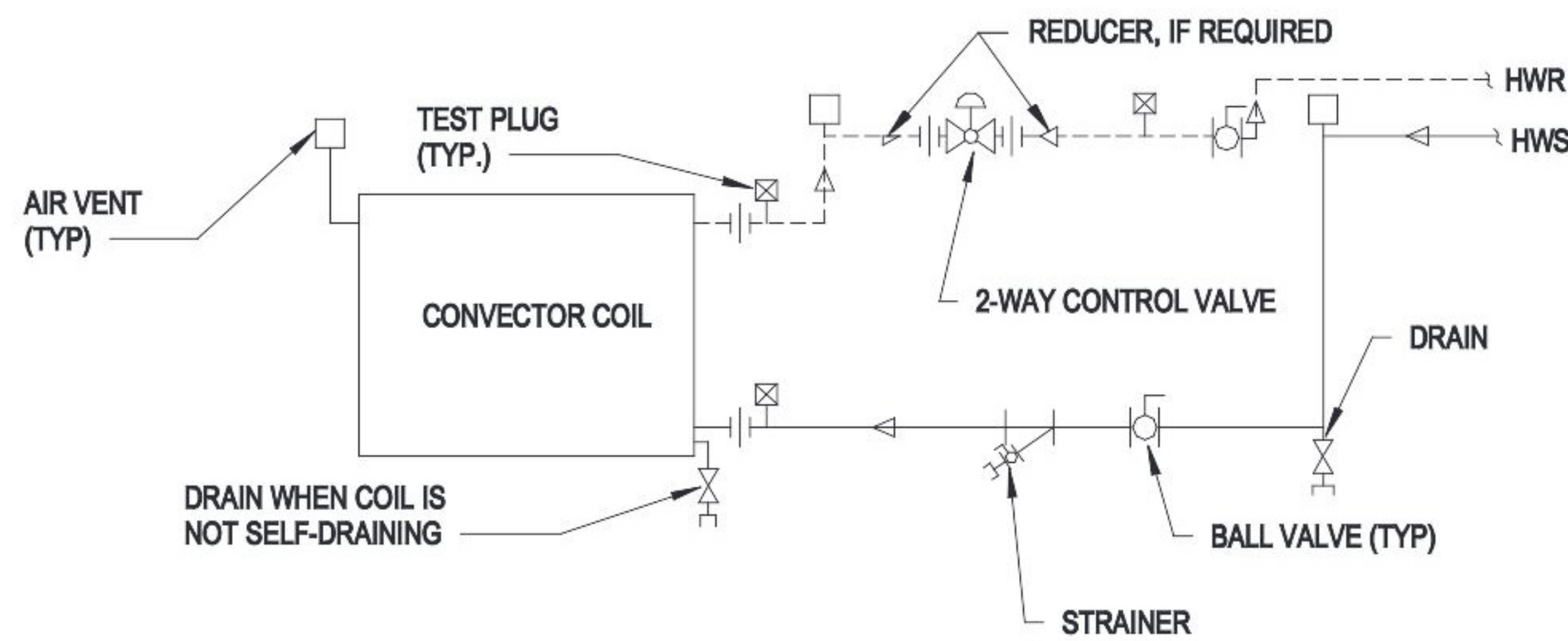
2 3-WAY CONTROL VALVE HEATING COIL DETAIL
SCALE: 3/8" = 1'-0"



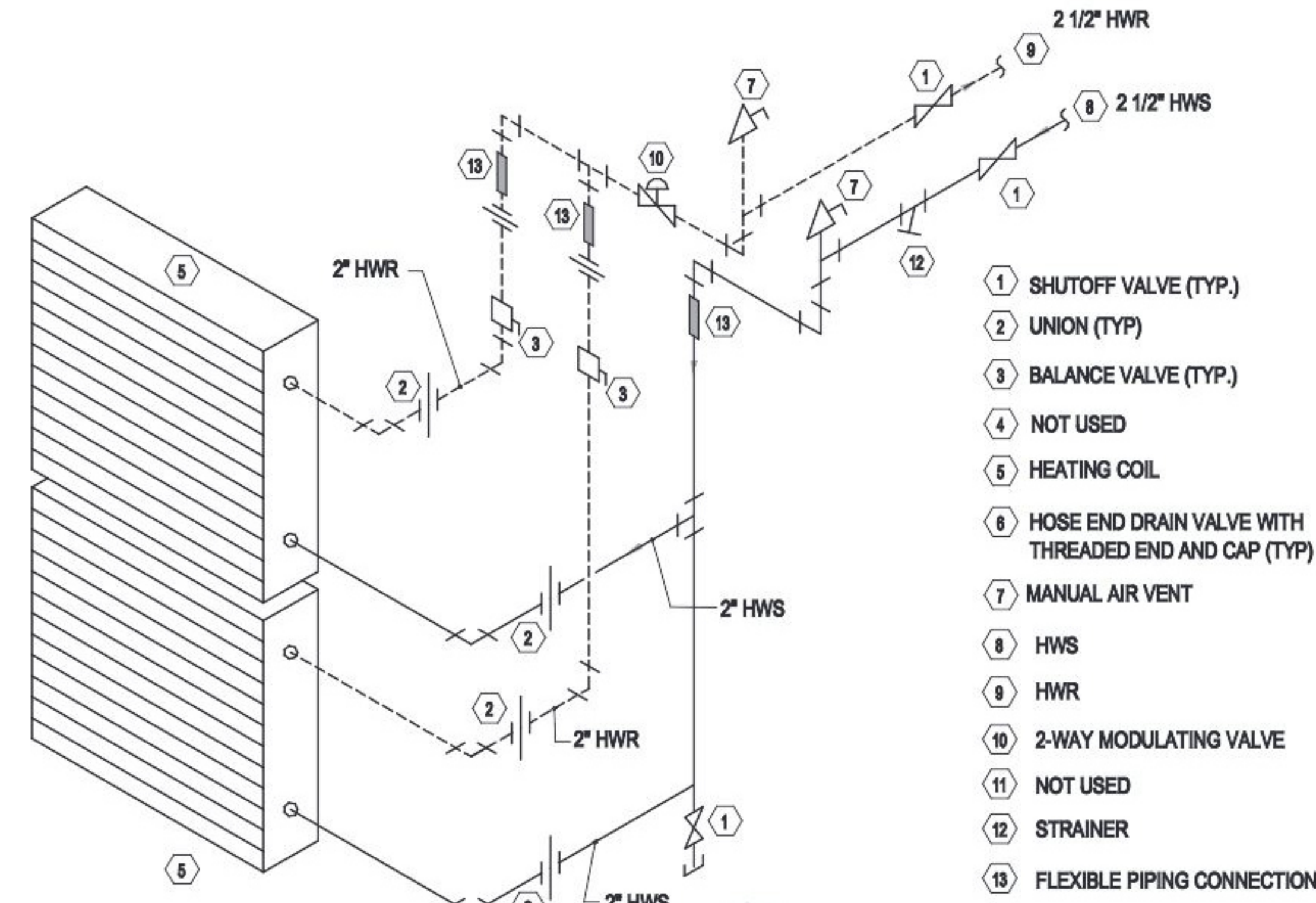
3 CEILING CABINET UNIT HEATER DETAIL
SCALE: 3/8" = 1'-0"



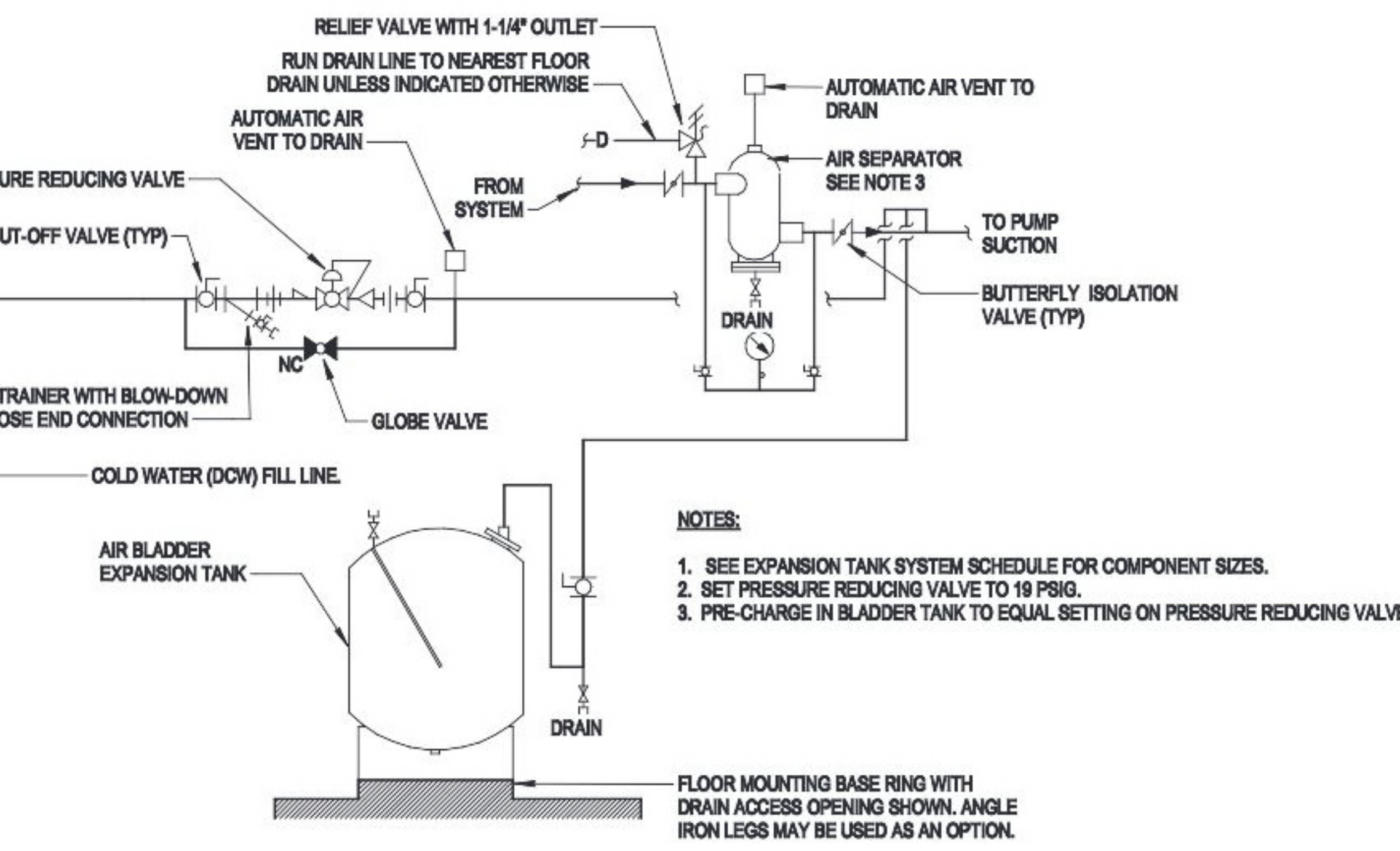
4 CONDENSATE PUMP DETAIL
SCALE: 3/8" = 1'-0"



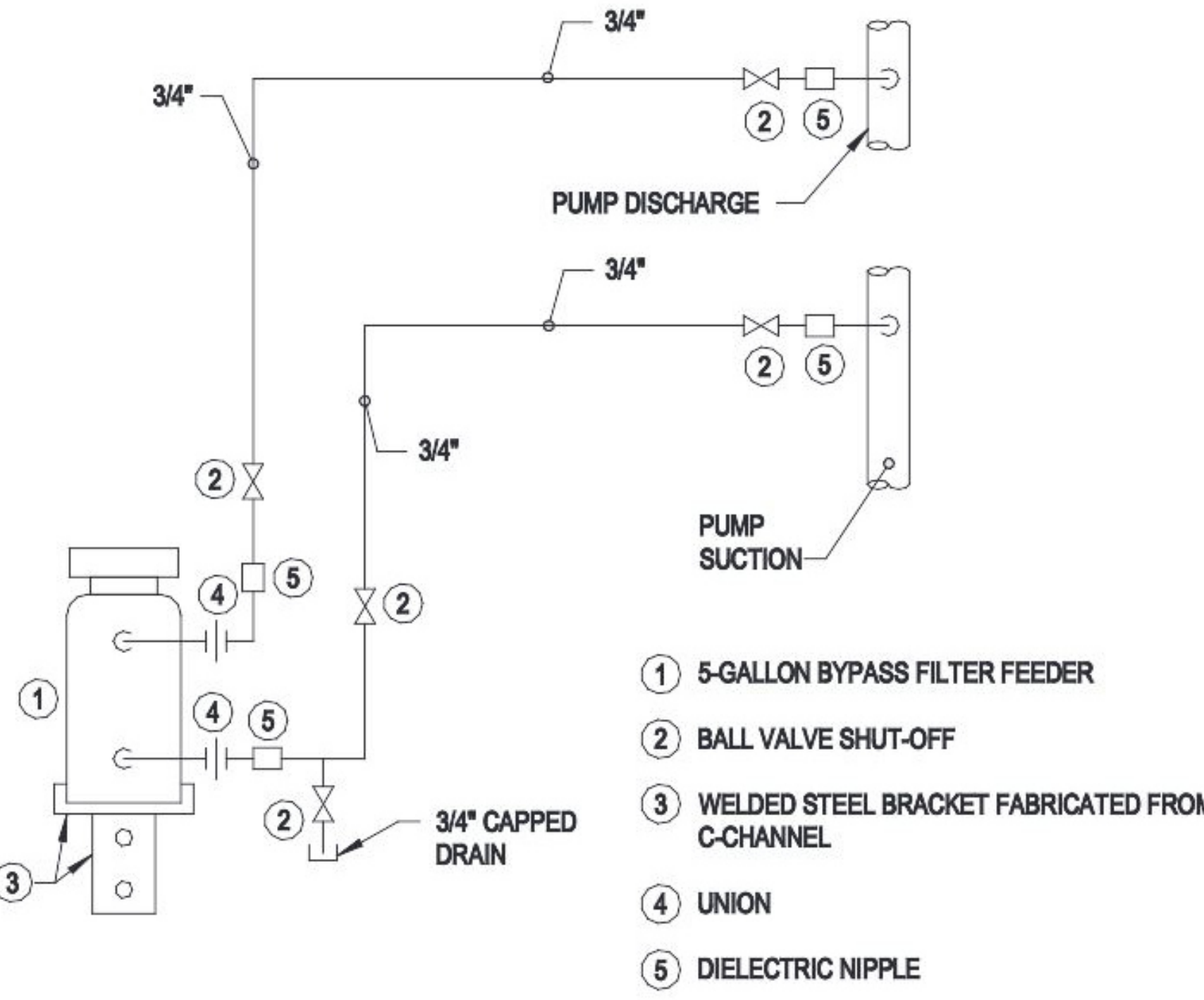
5 CONVECTOR PIPING DETAIL
SCALE: 3/8" = 1'-0"



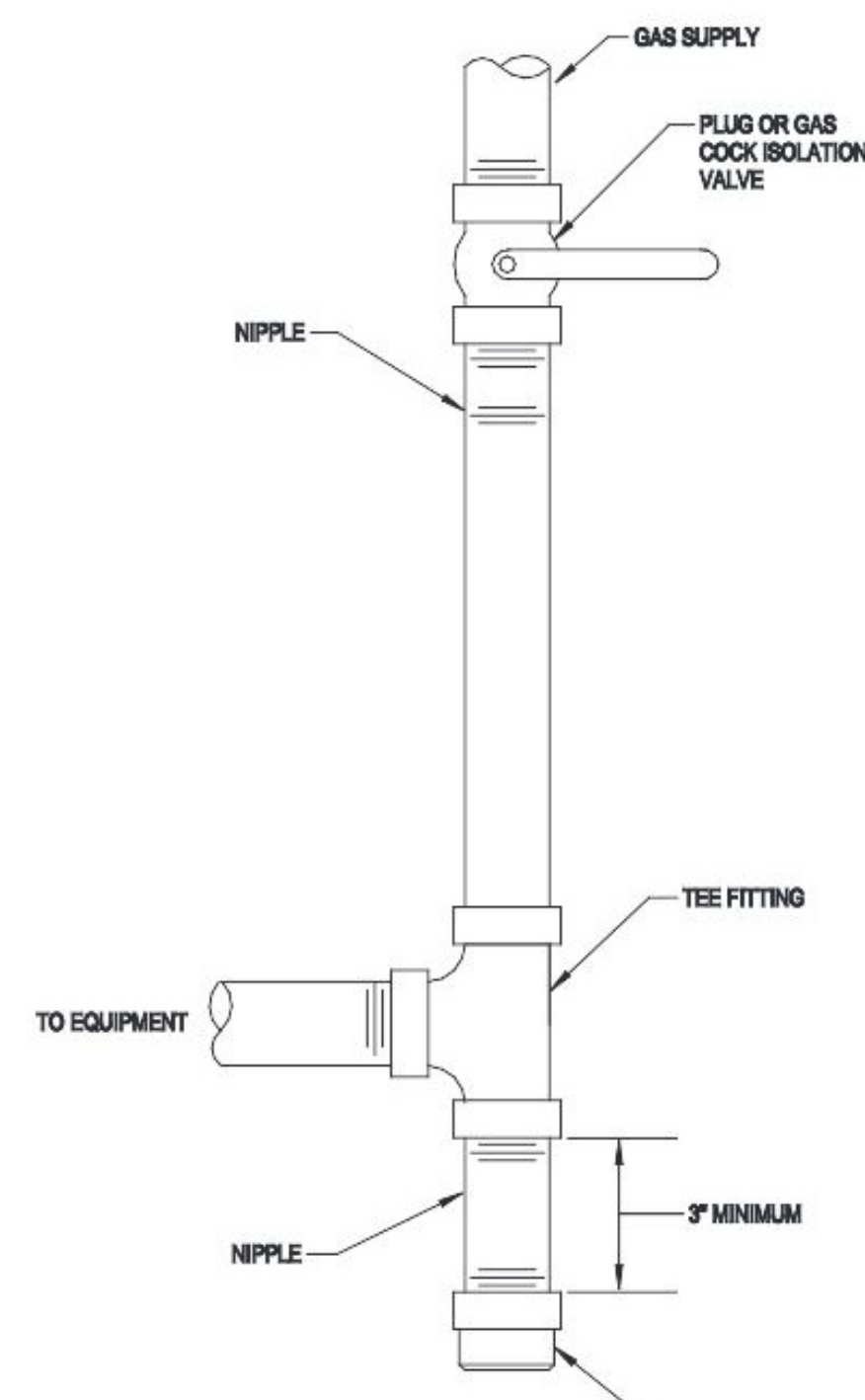
6 DOUBLE STACK HOT WATER PIPING DETAIL
SCALE: 3/8" = 1'-0"



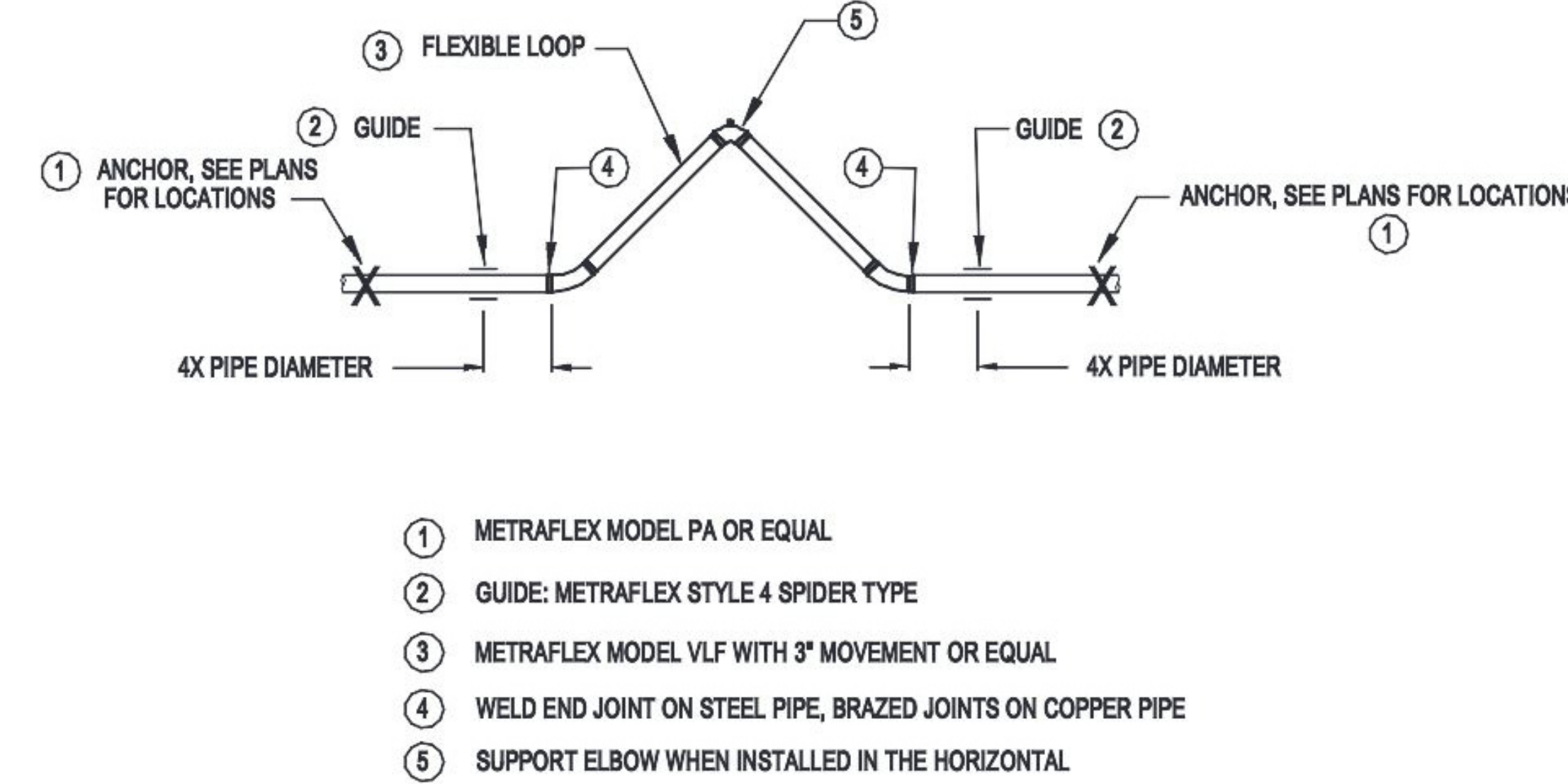
7 EXPANSION TANK DETAIL
SCALE: 3/8" = 1'-0"



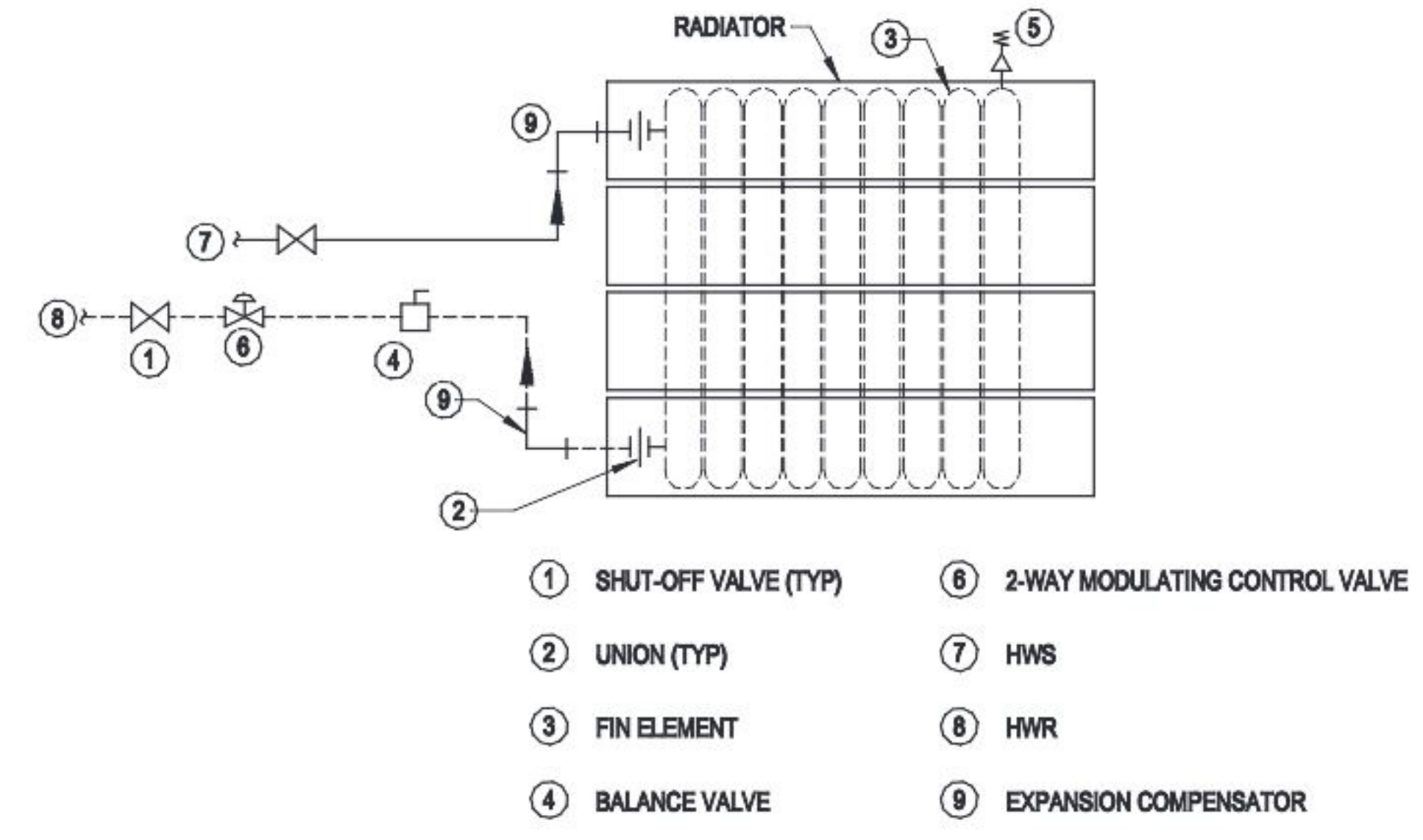
8 FILTER FEEDER DETAIL
SCALE: 3/8" = 1'-0"



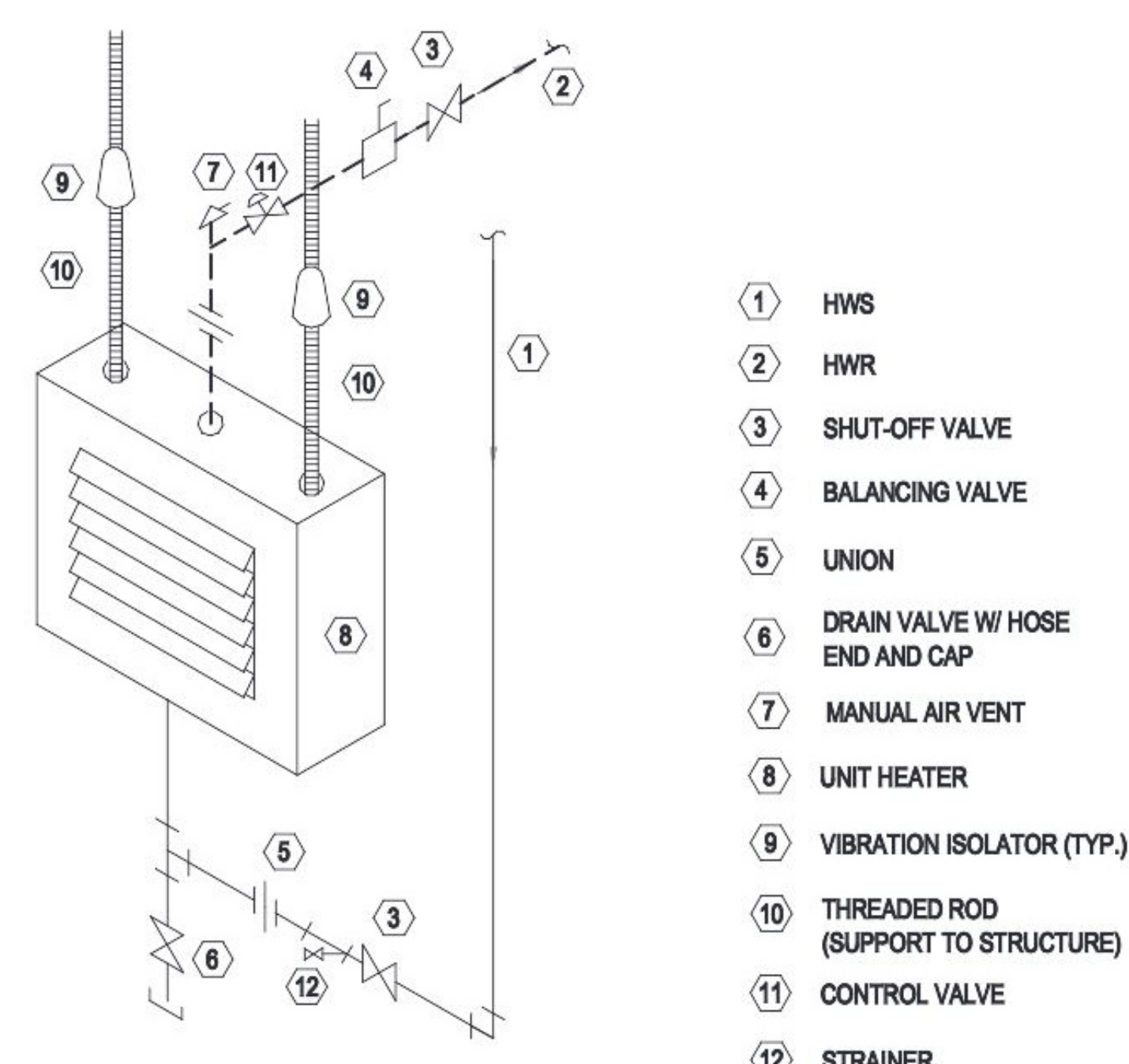
9 GAS LEG DETAIL
SCALE: 3/8" = 1'-0"



10 HEATING WATER EXPANSION LOOP DETAIL
SCALE: 3/8" = 1'-0"



11 HOT WATER RADIATION DETAIL
SCALE: 3/8" = 1'-0"



12 HYDRONIC RADIATION DETAIL
SCALE: 3/8" = 1'-0"

TRADE	DESCRIPTION	DATE	REV
MECHANICAL	MECHANICAL	06/01/2023	1
ELECTRICAL	ELECTRICAL		
PLUMBING	PLUMBING		
HVAC	HVAC		
RECORD OF TRADE COORDINATION			
TRADE	COMPANY	DATE	AUTHORIZED SIGNATURE
MECHANICAL			
ELECTRICAL			
PLUMBING			
COORDINATION NOTE			

ELITECAD DESIGNS DISCLAIMER
INFORMATION APPEARING ON THIS SHEET HAS BEEN PREPARED FROM THE BEST INFORMATION AVAILABLE. ELITECAD DESIGNS ASSUMES NO LIABILITY TO THE USER FOR ANY CONSTRUCTION MALPRACTICE OR INADEQUATE DESIGN. THE USER SHALL BE RESPONSIBLE FOR THE ACCURACY OF THE INFORMATION AND THE USER SHALL BE RESPONSIBLE FOR THE ACCURACY OF THE INFORMATION AND THE USER SHALL BE RESPONSIBLE FOR THE ACCURACY OF THE INFORMATION.

ARCHITECT / ENGINEER NOTES:

FOR APPROVAL

REV	DATE	DESCRIPTION
1	12/01/2023	SUBMITTED FOR APPROVAL

