

DRAWING NOTES AND SYMBOLS

1.ELEVATIONS TAKEN FROM
BASEMENT GYM LEVEL -
251' - 2 3/8"

2. COLUMN LINES NOT PRESENT. COLUMN LINES CREATED FROM ARCHITECTURAL BACKGROUND. VERIFY IN FIELD.

3. TYPICAL TRIM DETAILS TO FOLLOW IN SEPARATE DRAWING.

REFERENCE DRAWINGS		
TRADE	DESCRIPTION	DATE
MECH PIPE	HD-MECH - BASEMENT HVAC PLAN	06/06/2023
MECH METAL	-	-
MECH	-	-
PLUMBING	-	-
ELECTRICAL	-	-
STRUCTURAL	-	-
ARCHITECTURAL	-	-
ROF	-	-

RECORD OF TRADE COORDINATION			
TRADE	COMPANY	DATE	AUTHORIZED SIGNATURE
PIPE FITTER			
SHEET METAL			
PLUMBER			
IRONWORKER			
ELECTRICIAN			
MECHANICAL ENGINEER			
GENERAL CONTRACTOR			
ENGINEER			

COORDINATION NOTE

ELITE CAD DESIGNS SHALL NOT BE LIABLE FOR ANY MISTAKES, CONSTRUCTION ERRORS OR DELAYS THAT MAY RESULT FROM DECISIONS MADE BY THE CLIENT BASED ON THE INFORMATION PROVIDED ON THESE DRAWINGS. MEASUREMENTS ARE MADE AT A MOMENT IN TIME AND ONLY GIVE MEASUREMENT DATA AT THAT MOMENT OF LOCATION.

ELITE CAD DESIGNS DISCLAIMER

INFORMATION APPEARING ON THIS SHEET WAS PREPARED FROM THE BEST INFORMATION AVAILABLE. ELITE CAD DESIGN'S ATTENTION IS CALLED TO THE FACT THAT CONDITIONS AND QUANTITIES, AS SHOWN ON THE SHEET ARE ESTIMATES, NOT ACTUAL, AND IN ANY EVENT THEY ARE NOT TO BE DETERMINED OR CONSIDERED BY ANYONE AS A WARRANTY OF ACTUAL FIELD CONDITIONS.

ARCHITECT / ENGINEER NOTES

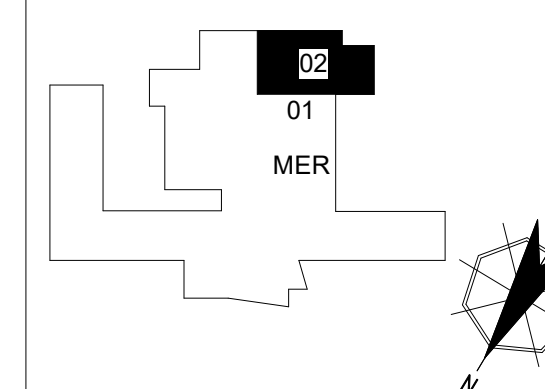
① CRAWL SPACE EXISTING
CONDITIONS CONSTRAIN ENTR
INTO GYM. PIPING CURRENTLY
IN CONFLICT WITH GYM
MIRROR.

FOR APPROVAL

VERIFY THAT LINE ABOVE IS 1" LONG, PRINT MAY HAVE BEEN REDUCED

REV	DATE	DESCRIPTION
0	11/22/2023	SUBMITTED FOR APPROVAL

KEY PLAN



AR01 KSQ Design

ENG Sage Engineering Associates

PROJECT Nanuet High School
103 Church St.

TITLE	100-074210-01 Nassau, NY 10954 BASEMENT
-------	--

BASEMENT PART PLAN - AREA 2			
GRP LDR	MC	PRO MGT	JOB NO

DATE	SCALE	DWG NO
11/22/2023	1/4" = 1'-00"	MB RM 01