

Capacity data at conditions and connection ratio (92) as entered

Name	FCU	Cooling			
		Tmp C °F (DBT/RH)	Max TC BTU/h	Temp °F	Max SC BTU/h
UV-MS-1 box 1	EKEXV125-US	n/a	52,547	42.8	n/a
UV-MS-2 box 1	EKEXV63-US	n/a	26,615	42.8	n/a
UV-MS-3 box 1	EKEXV125-US	n/a	52,547	42.8	n/a
UV-MS-4 box 1	EKEXV125-US	n/a	52,547	42.8	n/a
UV-MS-5 box 1	EKEXV125-US	n/a	52,547	42.8	n/a

Name	FCU	Heating	
		Tmp H	Max HC
		°F	BTU/h
UV-MS-1 box 1	EKEXV125-US	n/a	n/a
UV-MS-2 box 1	EKEXV63-US	n/a	n/a
UV-MS-3 box 1	EKEXV125-US	n/a	n/a
UV-MS-4 box 1	EKEXV125-US	n/a	n/a
UV-MS-5 box 1	EKEXV125-US	n/a	n/a

Name	FCU	Room	Sound dBA	PS	MCA MOP A	WtHxD inch	Weight lbs
UV-MS-1 box 1	EKEKV125-US		-	12 1ph		8.5 x 15.8 x 3.1	6.4
UV-MS-2 box 1	EKEKV68-US		-	12 1ph		8.5 x 15.8 x 3.1	6.4
UV-MS-3 box 1	EKEKV125-US		-	12 1ph		8.5 x 15.8 x 3.1	6.4
UV-MS-4 box 1	EKEKV125-US		-	12 1ph		8.5 x 15.8 x 3.1	6.4
UV-MS-5 box 1	EKEKV125-US		-	12 1ph		8.5 x 15.8 x 3.1	6.4

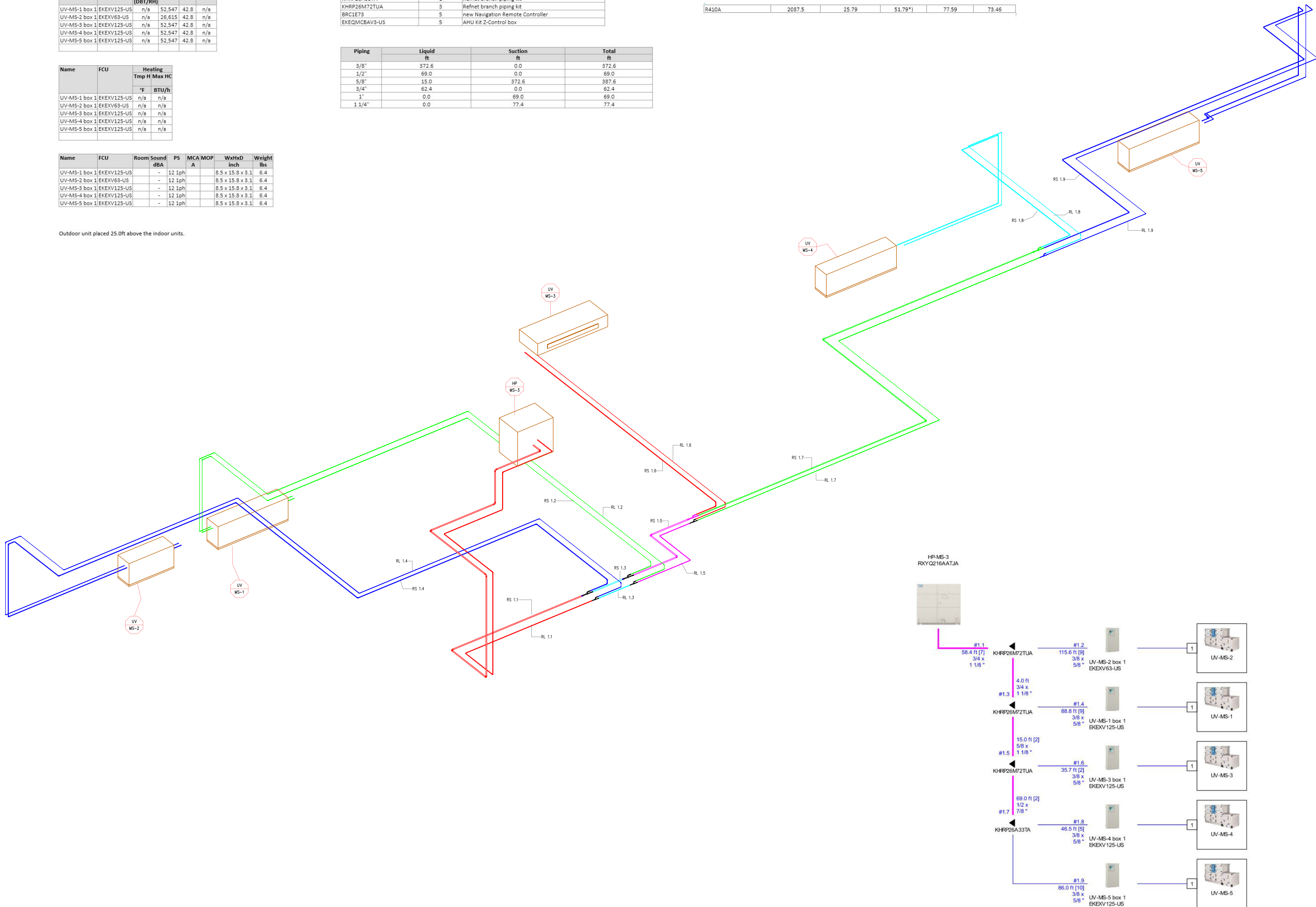
Outdoor unit placed 25.0ft above the indoor units.

Model	Quantity	Description
RYQY216AATJA	1	VRV EMERION (208-230V) (VRV EMERION (208-230V))
EKEXV63-US	1	AHU INTEGRATION VALVE KIT
EKEXV125-US	4	AHU INTEGRATION VALVE KIT
KHRP26A33TA	1	Refnet branch piping kit
KHRP26M72TUA	3	Refnet branch piping kit
BRC1E73	5	new Navigation Remote Controller
EKEQMCAV3-US	5	AHU Kit 2-Control box

Piping	Liquid ft	Suction ft	Total ft
3/8"	372.6	0.0	372.6
1/2"	69.0	0.0	69.0
5/8"	15.0	372.6	387.6
3/4"	62.4	0.0	62.4
1"	0.0	69.0	69.0
1 1/4"	0.0	77.4	77.4

Refrigerant information

Refrigerant type	GWP	Base charge lbs	Extra charge lbs	Total refrigerant charge lbs	Total CO2 equivalent tonnes
R410A	2087.5	25.79	51.79*)	77.59	73.46



DRAWING NOTES AND SYMBOLS

REFERENCE DRAWINGS			
TRADE	DESCRIPTION	DATE	REV
MECHANICAL	-	-	-
MECHANICAL	-	-	-
MECHANICAL	-	-	-
MECHANICAL	-	-	-
ELECTRICAL	-	-	-
STRUCTURAL	-	-	-
ARCHITECTURAL	-	-	-
NOT	-	-	-

RECORD OF TRADE COORDINATION			
TRADE	COMPANY	DATE	AUTHORIZED SIGNATURE
PVC FIBER			
SHEET METAL			
PLUMBER			
SMITH/DR			
ELECTRICIAN			
Mechanical Unit			
General Cont			
ENCLOSURE			

COORDINATION NOTE

ELITE CAD DESIGNS SHALL NOT BE LIABLE FOR ANY MISTAKES, CONSTRUCTION ERRORS OR DELAYS THAT MAY RESULT FROM DECISIONS MADE BY THE CLIENT BASED ON THE INFORMATION PROVIDED ON THESE DRAWINGS. MEASUREMENTS ARE MADE AT A MOMENT IN TIME AND ONLY GIVE MEASUREMENT DATA AT THE MOMENT OF LOCATION.

ELITE CAD DESIGNS DISCLAIMER

INFORMATION APPEARING ON THIS SHEET WAS PREPARED FROM THE BEST INFORMATION AVAILABLE. ELITE CAD DESIGNS' ATTENTION IS CALLED TO THE FACT THAT CONDITIONS AND QUANTITIES, AS SHOWN ON THE SHEET ARE ESTIMATED AND NOT ACTUAL, AND IN ANY EVENT THEY ARE NOT TO BE DETERMINED OR CONSIDERED BY ANYONE AS A WARRANTY OF ACTUAL FIELD CONDITIONS OR QUANTITIES.

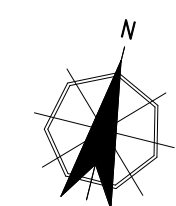
ARCHITECT / ENGINEER NOTES:

FOR APPROVAL

VERIFY THAT LINE ABOVE IS 1" LONG, PRINT MAY HAVE BEEN REDUCED

REV	DATE	DESCRIPTION
0	01/18/2024	SUBMITTED FOR APPROVAL
1	01/22/2024	DAIKIN VRF & MATERIALS ADDED

KEY PLAN



ARD1	KSQ Design
ENG	Sage Engineering Ass

PROJECT		Ran Middle School 50 Blauevelt Rd #1 Ramsey, NY 12954	
TITLE REFRIGERANT LENGTHS OVERALL DIAGRAM			
GRP LDR	MC	PRO MGT	JOB NO
		MM	J23-299
DATE	SCALE	DWG NO	REV
01/18/2024		MP-HP-MS-3	1