

HP-MS-4 - RXYQ288AATJA = RXYQ144AATJA + RXYQ144AATJA

Capacity data at conditions and connection ratio (107) as entered

Name	FCU	Cooling			
		Temp C °F	Max TC (DBT/RH)	Evap BTU/h	Max SC BTU/h
UV-MS-13 box 1	EKEKV125-US	n/a	52.547	42.8	n/a
UV-MS-14 box 1	EKEKV125-US	n/a	52.547	42.8	n/a
UV-MS-16 box 1	EKEKV125-US	n/a	52.547	42.8	n/a
UV-MS-19 box 1	EKEKV125-US	n/a	52.547	42.8	n/a
UV-MS-21 box 1	EKEKV125-US	n/a	52.547	42.8	n/a
UV-MS-22 box 1	EKEKV125-US	n/a	52.547	42.8	n/a

Name	FCU	Heating	
		Temp H °F	Max HC BTU/h
UV-MS-13 box 1	EKEKV125-US	n/a	n/a
UV-MS-14 box 1	EKEKV125-US	n/a	n/a
UV-MS-16 box 1	EKEKV125-US	n/a	n/a
UV-MS-19 box 1	EKEKV125-US	n/a	n/a
UV-MS-21 box 1	EKEKV125-US	n/a	n/a
UV-MS-22 box 1	EKEKV125-US	n/a	n/a

Name	FCU	Room dBA	Sound dBA	PS	MCA A	MOP	WxHxD inch	Weight lbs
UV-MS-13 box 1	EKEKV125-US	-	12	1ph			8.5 x 15.8 x 3.1	6.4
UV-MS-14 box 1	EKEKV125-US	-	12	1ph			8.5 x 15.8 x 3.1	6.4
UV-MS-16 box 1	EKEKV125-US	-	12	1ph			8.5 x 15.8 x 3.1	6.4
UV-MS-19 box 1	EKEKV125-US	-	12	1ph			8.5 x 15.8 x 3.1	6.4
UV-MS-21 box 1	EKEKV125-US	-	12	1ph			8.5 x 15.8 x 3.1	6.4
UV-MS-22 box 1	EKEKV125-US	-	12	1ph			8.5 x 15.8 x 3.1	6.4

Outdoor unit placed 12.0ft above the indoor units.

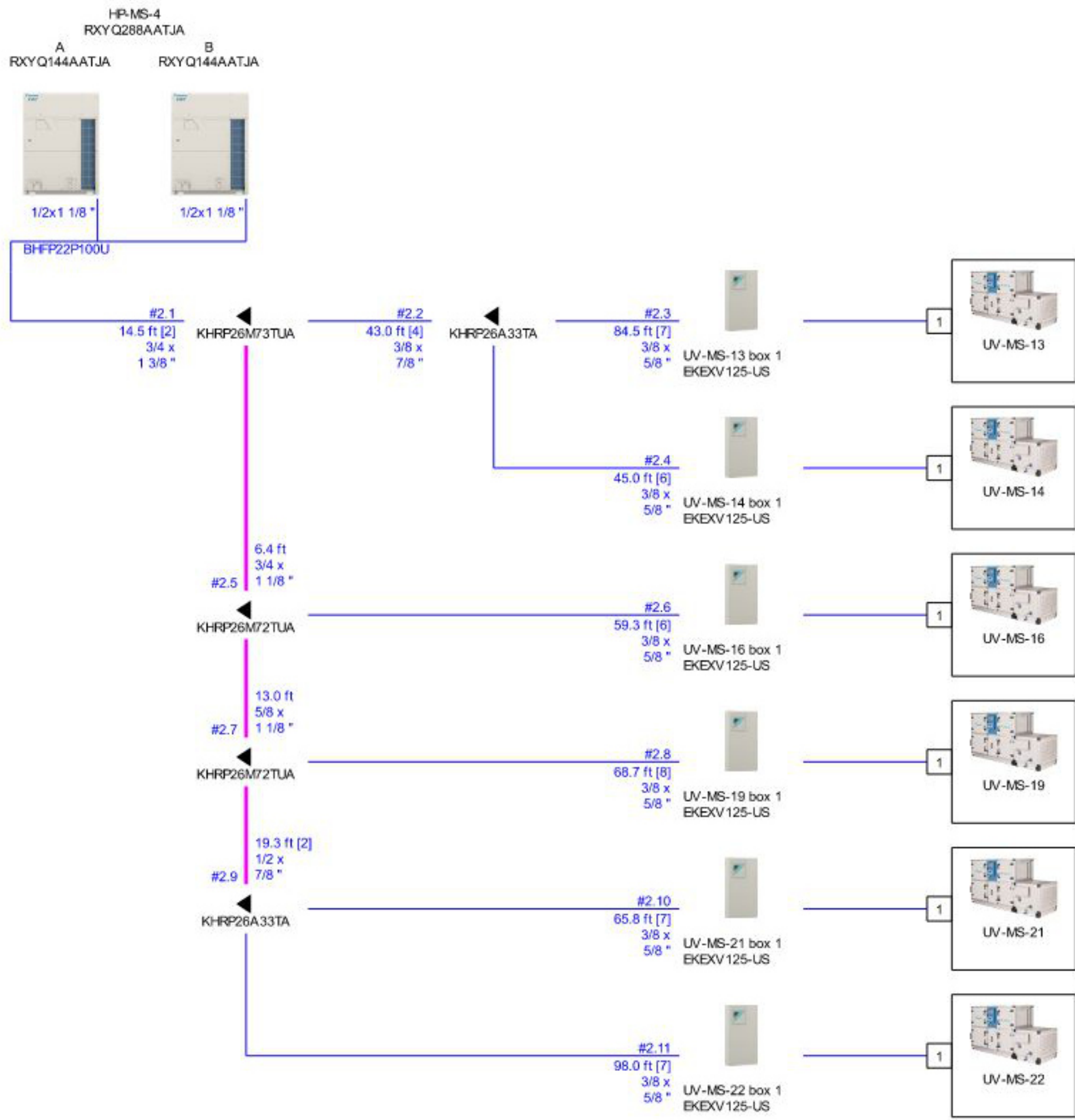
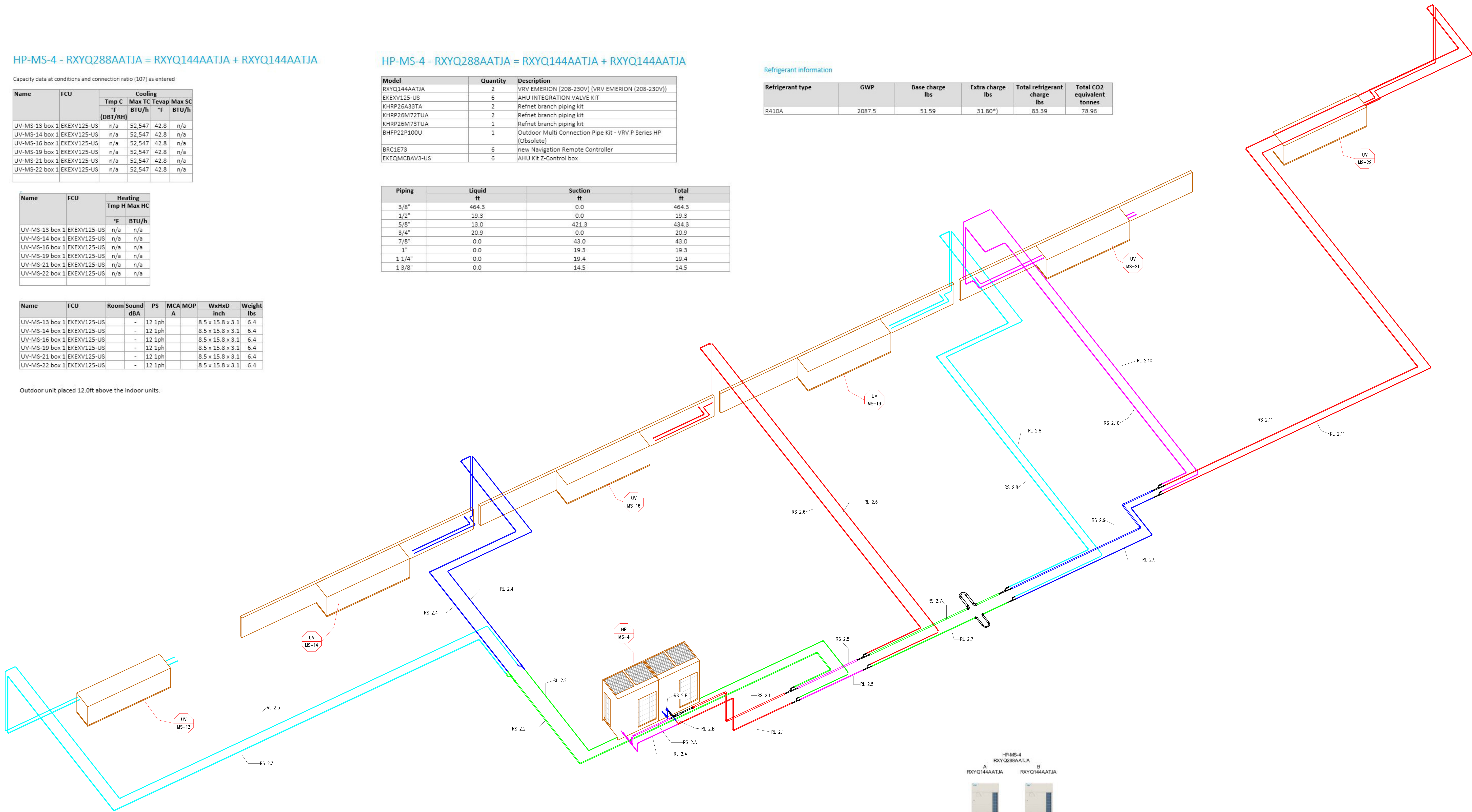
HP-MS-4 - RXYQ288AATJA = RXYQ144AATJA + RXYQ144AATJA

Model	Quantity	Description
RXYQ144AATJA	2	VRV EMERION (208-230V) (VRV EMERION (208-230V))
EKEKV125-US	6	AHU INTEGRATION VALVE KIT
KHRP26A33TA	2	Refnet branch piping kit
KHRP26M72TUA	2	Refnet branch piping kit
KHRP26M73TUA	1	Refnet branch piping kit
BHP22P100U	1	Outdoor Multi Connection Pipe Kit - VRV P Series HP (Obsolete)
BRC1E73	6	new Navigation Remote Controller
EKEQMCBAV3-US	6	AHU Kit 2-Control box

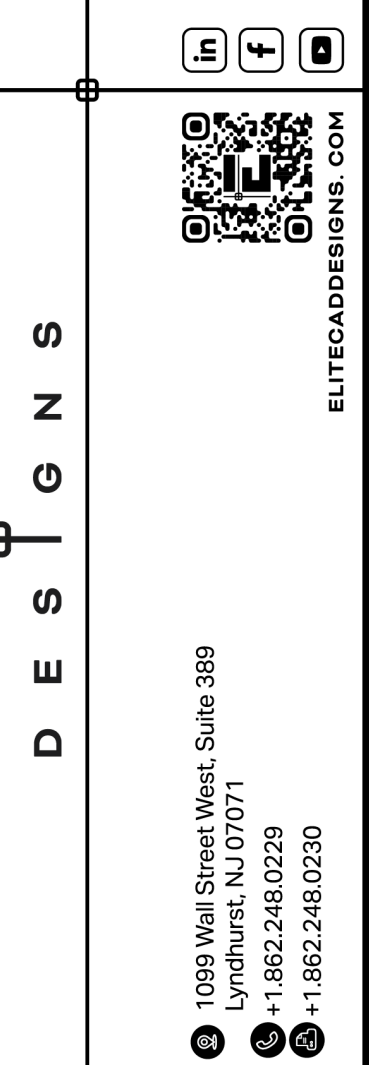
Piping	Liquid ft	Suction ft	Total ft
3/8"	464.3	0.0	464.3
1/2"	19.3	0.0	19.3
5/8"	13.0	421.3	434.3
3/4"	20.9	0.0	20.9
7/8"	0.0	43.0	43.0
1"	0.0	19.3	19.3
1 1/4"	0.0	19.4	19.4
1 3/8"	0.0	14.5	14.5

Refrigerant information

Refrigerant type	GWP	Base charge lbs	Extra charge lbs	Total refrigerant charge lbs	Total CO2 equivalent tonnes
R410A	2087.5	51.59	31.80*	83.39	78.96



ELITECAD



DRAWING NOTES AND SYMBOLS

TRADE	DESCRIPTION	DATE	REV
MECHANICAL	MECHANICAL	-	-
ELECTRICAL	ELECTRICAL	-	-
PLUMBING	PLUMBING	-	-
STRUCTURAL	STRUCTURAL	-	-
MECHANICAL	MECHANICAL	-	-
MECHANICAL	MECHANICAL	-	-

TRADE	COMPANY	DATE	AUTHORIZED SIGNATURE
MECHANICAL	MECHANICAL	-	-
ELECTRICAL	ELECTRICAL	-	-
PLUMBING	PLUMBING	-	-
STRUCTURAL	STRUCTURAL	-	-
MECHANICAL	MECHANICAL	-	-
MECHANICAL	MECHANICAL	-	-

COORDINATION NOTE
ELITECAD DESIGNS SHALL NOT BE RESPONSIBLE FOR ANY MATERIAL CONSTRUCTION ERRORS OR OMISSIONS THAT MAY RESULT FROM ASSUMPTIONS MADE BY THE CLIENT BASED ON THE INFORMATION PROVIDED ON THESE DRAWINGS. ELITECAD DESIGNS ARE NOT RESPONSIBLE FOR THE ACCURACY OF THE INFORMATION PROVIDED ON THESE DRAWINGS. ELITECAD DESIGNS ARE NOT RESPONSIBLE FOR THE ACCURACY OF THE INFORMATION PROVIDED ON THESE DRAWINGS. ELITECAD DESIGNS ARE NOT RESPONSIBLE FOR THE ACCURACY OF THE INFORMATION PROVIDED ON THESE DRAWINGS.

ARCHITECT / ENGINEER NOTES:
FOR APPROVAL

REV	DATE	DESCRIPTION
0	01/18/2024	SUBMITTED FOR APPROVAL
1	01/22/2024	DRAWING VRF & MATERIALS ADDED

KEY PLAN

KEY PLAN

KEY PLAN

KEY PLAN

KEY PLAN

KEY PLAN

KEY PLAN

KEY PLAN