

HP-MS-6 - RXYQ336AATJA = RXYQ168AATJA + RXYQ168AATJA

Capacity data at conditions and connection ratio (98) as entered

Name	FCU	Cooling			
		Temp C °F	Max TC BTU/h	Evap °F	Max SC BTU/h
UV-MS-23 box 1	EKEXV125-US	n/a	52,547	42.8	n/a
UV-MS-24 box 1	EKEXV125-US	n/a	52,547	42.8	n/a
UV-MS-25 box 1	EKEXV125-US	n/a	52,547	42.8	n/a
UV-MS-26 box 1	EKEXV125-US	n/a	52,547	42.8	n/a
UV-MS-27 box 1	EKEXV125-US	n/a	52,547	42.8	n/a
UV-MS-39 box 1	EKEXV125-US	n/a	52,547	42.8	n/a
UV-MS-40 box 1	EKEXV125-US	n/a	52,547	42.8	n/a

Name	FCU	Heating	
		Temp H °F	Max HC BTU/h
UV-MS-23 box 1	EKEXV125-US	n/a	n/a
UV-MS-24 box 1	EKEXV125-US	n/a	n/a
UV-MS-25 box 1	EKEXV125-US	n/a	n/a
UV-MS-26 box 1	EKEXV125-US	n/a	n/a
UV-MS-27 box 1	EKEXV125-US	n/a	n/a
UV-MS-39 box 1	EKEXV125-US	n/a	n/a
UV-MS-40 box 1	EKEXV125-US	n/a	n/a

Name	FCU	Room Sound dBA	PS	MCA MOP A	WxHxD inch	Weight lbs
UV-MS-23 box 1	EKEXV125-US	-	12 lph		8.5 x 15.8 x 3.1	6.4
UV-MS-24 box 1	EKEXV125-US	-	12 lph		8.5 x 15.8 x 3.1	6.4
UV-MS-25 box 1	EKEXV125-US	-	12 lph		8.5 x 15.8 x 3.1	6.4
UV-MS-26 box 1	EKEXV125-US	-	12 lph		8.5 x 15.8 x 3.1	6.4
UV-MS-27 box 1	EKEXV125-US	-	12 lph		8.5 x 15.8 x 3.1	6.4
UV-MS-39 box 1	EKEXV125-US	-	12 lph		8.5 x 15.8 x 3.1	6.4
UV-MS-40 box 1	EKEXV125-US	-	12 lph		8.5 x 15.8 x 3.1	6.4

Outdoor vs. indoor position

Outdoor unit placed 25.0ft above the indoor units.

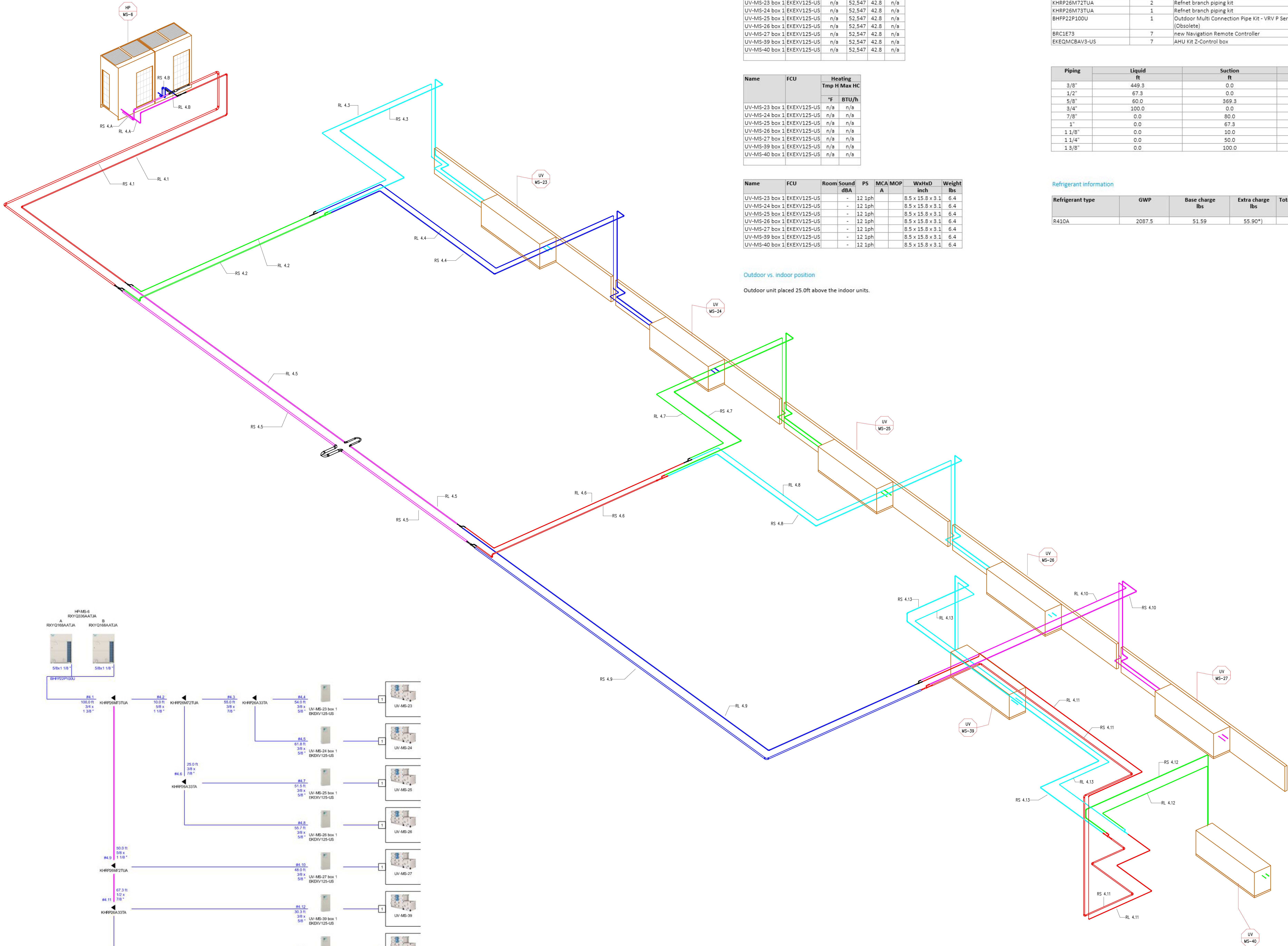
HP-MS-6 - RXYQ336AATJA = RXYQ168AATJA + RXYQ168AATJA

Model	Quantity	Description
RXYQ168AATJA	2	VRV EMERION (208-230V) (VRV EMERION (208-230V))
EKEXV125-US	7	AHU INTEGRATION VALVE KIT
KHRP26A33TA	3	Refnet branch piping kit
KHRP26M72TUA	2	Refnet branch piping kit
KHRP26M73TUA	1	Refnet branch piping kit
BHFP22P100U	1	Outdoor Multi Connection Pipe Kit - VRV P Series HP (Obsolete)
BRC1E73	7	new Navigation Remote Controller
EKEQMCAV3-US	7	AHU Kit Z-Control box

Piping	Liquid ft	Suction ft	Total ft
3/8"	449.3	0.0	449.3
1/2"	67.3	0.0	67.3
5/8"	60.0	369.3	429.3
3/4"	100.0	0.0	100.0
7/8"	0.0	80.0	80.0
1"	0.0	67.3	67.3
1 1/8"	0.0	10.0	10.0
1 1/4"	0.0	50.0	50.0
1 3/8"	0.0	100.0	100.0

Refrigerant information

Refrigerant type	GWP	Base charge lbs	Extra charge lbs	Total refrigerant charge lbs	Total CO2 equivalent tonnes
R410A	2087.5	51.59	55.90*	107.49	101.78



ELITECAD

DESIGNS

1099 Wall Street West, Suite 309
Lynnburg, N.J. 07071
+1 987 248 0290

DRAWING NOTES AND SYMBOLS

TRADE	DESCRIPTION	DATE	REV
MECHANICAL			
ELECTRICAL			
PLUMBING			
MECHANICAL			
ELECTRICAL			
PLUMBING			

TRADE	COMPANY	DATE	AUTHORIZED SIGNATURE
MECHANICAL			
ELECTRICAL			
PLUMBING			
MECHANICAL			
ELECTRICAL			
PLUMBING			

COORDINATION NOTE
ELITECAD DESIGNS DISCLAIMER
ELITECAD DESIGNS SHALL NOT BE RESPONSIBLE FOR ANY MATERIALS CONSTRUCTION ERRORS OR OMISSIONS THAT MAY RESULT FROM ASSUMPTIONS MADE BY THE CLIENT. BASED ON THE INFORMATION PROVIDED ON THESE DRAWINGS. ELITECAD DESIGNS ARE NOT RESPONSIBLE FOR ANY MATERIALS CONSTRUCTION ERRORS OR OMISSIONS THAT MAY RESULT FROM ASSUMPTIONS MADE BY THE CLIENT.

ARCHITECT / ENGINEER NOTES:

FOR APPROVAL

REV	DATE	DESCRIPTION
0	01/18/2024	SUBMITTED FOR APPROVAL
1	01/22/2024	DAKIN VRF & MATERIALS ADDED

KEY PLAN



ARCH	KSQ Design
ENG	Sage Engineering Associates
PROJECT	Bay View School 50 Bayview Rd #1 Lynnburg, NJ 07071
TITLE	REFRIGERANT LENGTHS OVERALL DIAGRAM
DATE	01/18/2024
SCALE	1"=10'
REVISION	MP-HP-MS-6
REV	1