




-
- The diagram illustrates a 1-Tier Element System. It shows a horizontal flow path starting from a 'FIN TUBE ENCLOSURE' on the left. The flow goes through a 'SHUT-OFF VALVE' (1), a 'UNION (TYP)' (2), a 'FIN ELEMENT' (3), a 'BALANCE VALVE' (4), and an 'AIR VENT' (5). It then passes through a '2-WAY MODULATING CONTROL VALVE' (6) before reaching the 'HWS MAIN' (7) and 'HWR MAIN' (8). The 'HWS MAIN' (7) is routed to the next room through an enclosure, and the 'HWR MAIN' (8) is also routed to the next room through an enclosure.
- DETAIL FOR 1-TIER ELEMENT SYSTEM**
- | | |
|------------------|--|
| ① SHUT-OFF VALVE | ⑤ AIR VENT |
| ② UNION (TYP) | ⑥ 2-WAY MODULATING CONTROL VALVE |
| ③ FIN ELEMENT | ⑦ HWS MAIN |
| ④ BALANCE VALVE | ⑧ HWR MAIN |
| | ⑨ HWR MAIN ROUTED TO NEXT ROOM THROUGH ENCLOSURE |
| | ⑩ HWS MAIN ROUTED TO NEXT ROOM THROUGH ENCLOSURE |

Diagram illustrating a two-pipe system with two active radiator lengths. The system includes two radiators, each with a bypass line. The first radiator has a shut-off valve (7) on its supply line and a union (2) on its bypass line. The second radiator has a 2-way modulating control valve (8) on its supply line and a balance valve (9) on its bypass line. The system is connected to a floor and an expansion compensator (4) with an air vent (1).

Legend:

- ① SHUT-OFF VALVE (TYP)
- ② UNION (TYP)
- ③ FIN ELEMENT
- ④ BALANCE VALVE
- ⑤ AIR VENT
- ⑥ 2-WAY MODULATING CONTROL VALVE
- ⑦ HWS
- ⑧ HWR
- ⑨ EXPANSION COMPENSATOR BETWEEN TWO ACTIVE RADIATOR LENGTHS

DESIGNS

ELITECAD

1599 Wall Street West, Suite 309
 Vancouver, BC V6W 0V7
 Tel: 604-245-0320
 Fax: 604-245-0330

ELITECADDESIGNS.COM

REFERENCE DRAWINGS			
TRADE	DESCRIPTION	DATE	REV
Mech/Elec	SEMI-TRAILER - EMBLEM PLANT	06/06/03	
Mech/Elec	"	"	"
Plum	"	"	"
Plumbing	"	"	"
Electrical	"	"	"
Structural	"	"	"
Mechanical	REAR - LOWER LEVEL PLUMBING AND ELECTRICAL REVISIONS TO PLUMBING	06/06/03	
Plum	"	"	"

RECORD OF TRADE COORDINATION			
TRADE	COMPANY	DATE	AUTHORIZED SIGNATURE
Arch/Elec			
Mech/Elec			
Plumber			
Plumbing			
Electrical			
Mechanical/Elect			
General			

COORDINATION NOTE

ELITE CAD DESIGNS SHALL NOT BE LIABLE FOR ANY MISTAKES, CORRECTIONS, OMISSIONS OR DELAYS THAT MAY RESULT FROM DECISIONS MADE BY THE CLIENT BASED ON THE INFORMATION PROVIDED ON THESE DRAWINGS. MEASUREMENTS SHALL BE MADE AT AVOIDANCE IN TAD AND/OR DISCREPANCY DATA AT THE REMOTE OF LOCATION.

ELITE CAD DESIGNS DISCLAIMER

INFORMATION APPEARING ON THIS SHEET WAS PREPARED FROM THE BEST INFORMATION AVAILABLE. ELITE CAD SHEETS ARE INTENTIONALLY CALLED TO THE FACT THAT CONDITIONS AND QUANTITIES ARE INFORMATION ON THIS SHEET ARE ESTIMATED AND NOT ACTUAL, AND IN ANY EVENT THEY ARE NOT TO BE DETERMINED OR CONSIDERED BY ANYONE AS A WARRANTY OF ACTUAL FIELD CONDITIONS OR QUANTITIES.

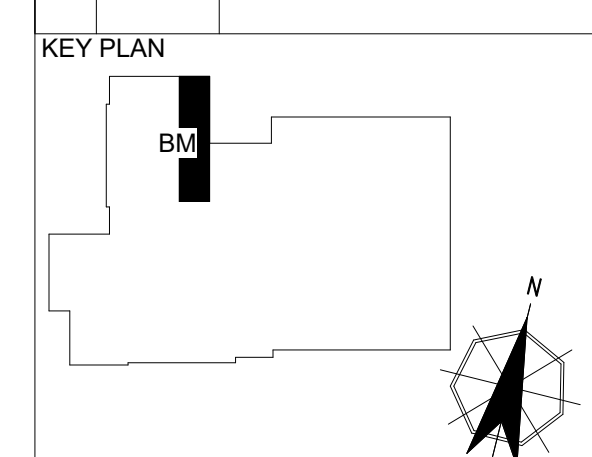
ARCHITECT / ENGINEER NOTES:

**① COLUMN LINES NOT PROVIDED
IN THIS AREA. VERIFY IN FIELD.**

FOR APPROVAL

VERIFY THAT LINE ABOVE IS 1" LONG, PRINT MAY HAVE BEEN REDUCED

REV	DATE	DESCRIPTION
0	12/18/2023	SUBMITTED FOR APPROVAL



ARCH	KSQ Design		
ENG	Sage Engineering Associates		
PROJECT	Barry Middle School 50 Blauevelt Rd #1 Nanuet, NY 12954		
TITLE	LEVEL - BASEMENT OVERALL PLAN & BUILDING DETAILS		
GRP LDR	MC	MM	J23-299
DATE	12/18/2023	3/8" = 1'-0"	MP-BM