
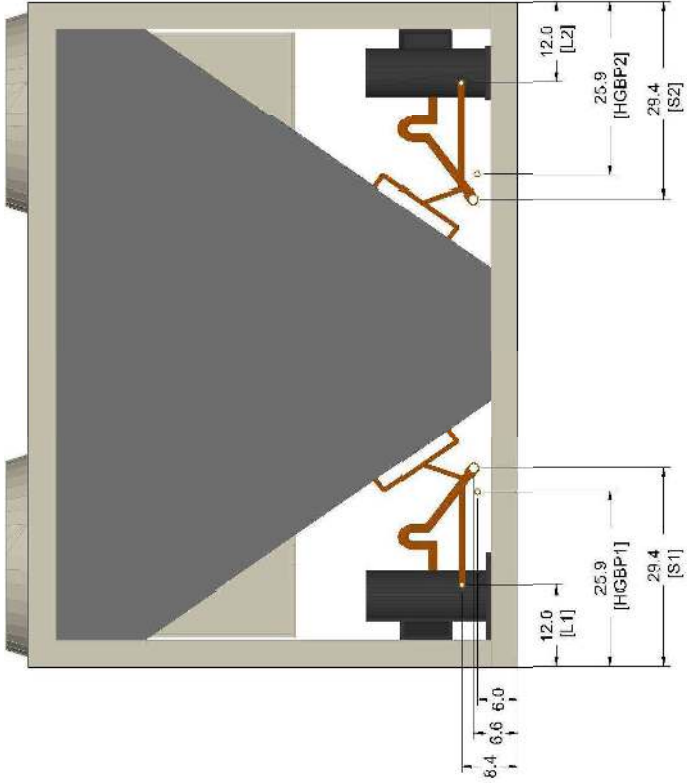


Product Drawing		Unit Tag: ACCU-HS-2		Sales Office: D&B Building Solutions LLC	
Product:		Project Name: Nanuet & Barr Bond		Sales Engineer:	
Model: RCS045D		Aug. 23, 2023	Ver/Rev:	Sheet: 1 of 1	Scale: NTS
				Tolerance: +/- 0.25"	
				Dwg Units: in [mm]	




13600 Industrial Park Blvd. Minneapolis, MN 55441
www.DaikinApplied.com Software Version: 09.40

No change to this drawing may be made unless approved in writing by Daikin Applied. Purchaser must determine that the equipment is fit and sufficient for the job specifications.



ELEVATION VIEW - PIPE CONNECTION DETAILS

Product Drawing Product: Model: RCS045D	Unit Tag: ACCU-HS-2		Sales Office: D&B Building Solutions LLC	
	Project Name: Nanuet & Barr Bond		Sales Engineer:	
	Aug. 23, 2023	Ver/Rev:	Sheet: 1 of 1	Scale: NTS Tolerance: +/- 0.25" Dwg Units: in [mm]
No change to this drawing may be made unless approved in writing by Daikin Applied. Purchaser must determine that the equipment is fit and sufficient for the job specifications.				
				
			13600 Industrial Park Blvd. Minneapolis, MN 55441 www.DaikinApplied.com Software Version: 09.40	

RCS-D Vintage Curb Rails

Part Number: 500518001

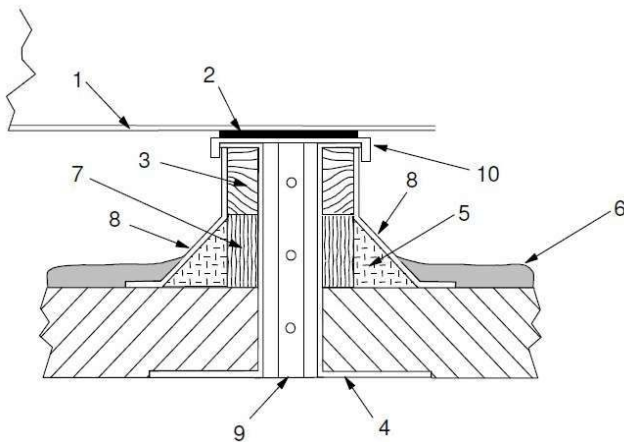
Description

Daikin's curb rails provide support for the RCS condensing unit with two 'floating' rails. These rails are spaced apart to properly support the unit at four corners. These rails are rigid and do not carry any wind or seismic certifications.

Components

1. Unit Base
2. Curb gasketing
3. 2 x 4 nailer strip
4. Galvanized curb
5. Cant strip*
6. Roofing material*
7. Rigid insulation*
8. Flashing*
9. Insulation between galvanized curb*
10. Galvanized curb cover

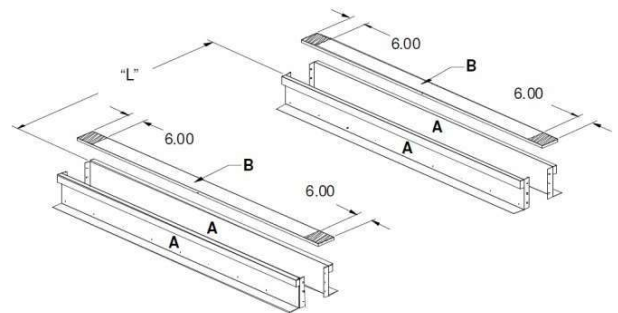
* NOT FURNISHED



Curb rails

Rail Dimensions

Model	"L" in.
015D, 020D, 025D	45
030D, 035D, 040D, 045D, 050D, 060D, 062D, 068D	58
042D, 070D, 072D, 075D, 080D, 085D, 090D, 092D, 100D, 105D	81
110D, 120D, 125D, 130D, 140D	114



Assembly Instructions

1. Set curbing parts “A” in place making sure that the orientation agrees with the assembly instructions. Check alignment of all mating bolt holes.
2. Bolt curbing parts together using fasteners provided. Securely tighten all bolts.
3. Curb must be level within .50” from side to side and .50” over its length.
4. Weld curb assembly in place. Caulk all seams watertight and insulate between channels.
5. Flash curbing into roof as shown in roof detail “A”.
6. Set curbing part “B” into place. Remove backing from .25” thick x 1.50” wide gasketing and apply to surface shown by crosshatching.

THIS IS WHATS CALLED FOR BUT EXTERNALL INSOLATION IS NOT REQUIRED ON INTERNALLY ISOLATED EQUIPMENT MOUNTED ON EQUIPMENT RAILS AND HAS A NEGITIVE IMPACT ON REFRIGERANT LINES CONNECTED



DAIKIN AND LOMBARDO DO NOT RECOMMEND EXTERNAL VIBRATION ISOLATION

Vibration Isolation Kit

Description

Vibration isolation kits come with springs for installation on each corner of the RCS condensing unit. Each kit has different springs for the different unit weights. For ease of installation the springs go in the same spots for the 15-25 ton models and in the same location for the 30-140 ton models.

Application

Vibration isolation kits are used to help absorb shocks or tremors generated by the unit (compressors coming on, fans, etc.) reducing the energy transferred to the building structure. Each unit has its own vibration kit per the weight of the unit frame, compressors, and fan arrangements.

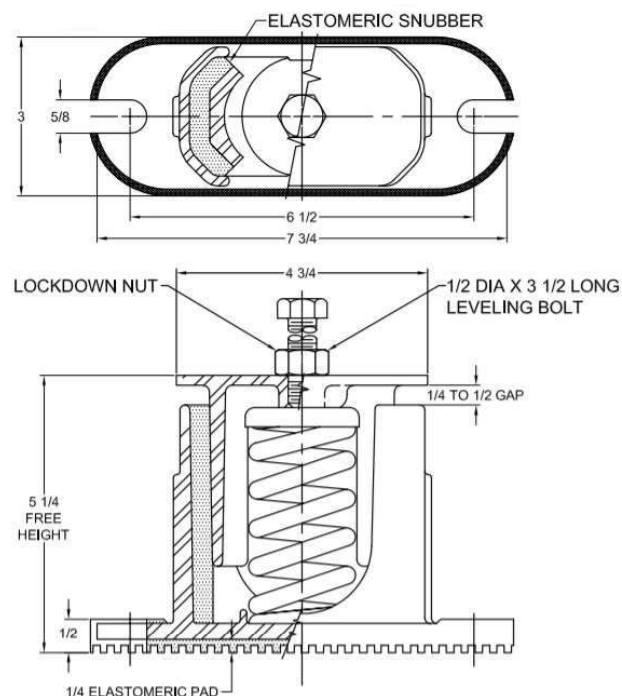


Multiple thickness and colors

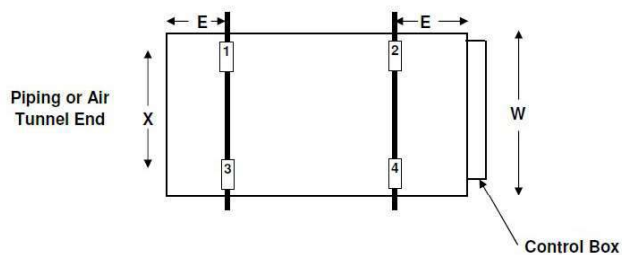


Photos courtesy of The VMC Group, vendor may vary.

Dimensions



Spring Placement



Dimension	Measurement
E	9.5"
W	99"
X	94"

Spring Specifications

TYPE CE-1D CAST IRON SPRING-FLEX ISOLATORS WITH EXTERNAL ADJUSTMENT				
MODEL	MAX LOAD (LBS)	DEFLECTION (IN)	SPRING RATE (LB/IN)	SPRING COLOR CODE
CE-1D-85	85	1.35	60	LT PURPLE
CE-1D-120	120	1.20	100	DK YELLOW
CE-1D-175	175	1.17	150	DK BLUE
CE-1D-250	250	1.40	179	YELLOW
CE-1D-340	340	1.13	300	RED
CE-1D-510	510	1.02	500	BLACK
CE-1D-675	675	1.32	513	DK PURPLE
CE-1D-900	900	1.02	881	DK GREEN
CE-1D-1200	1200	0.90	1327	GRAY
CE-1D-1360	1360	0.77	1758	WHITE
CE-1D-1785N ¹	1785	0.88	2029	GRAY/RED