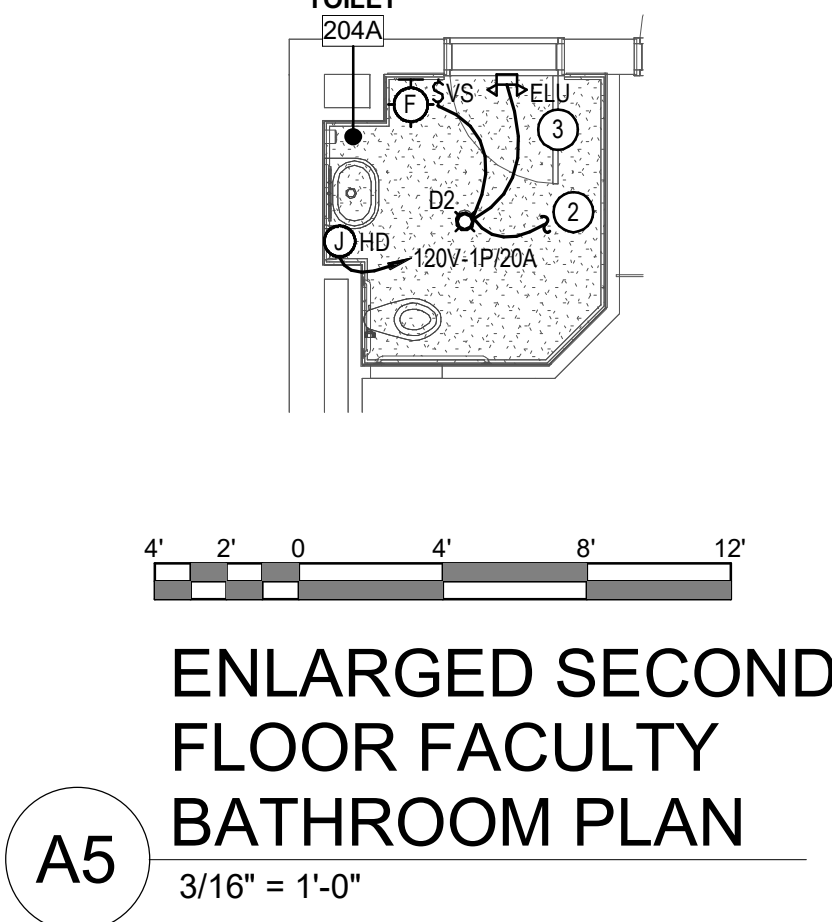
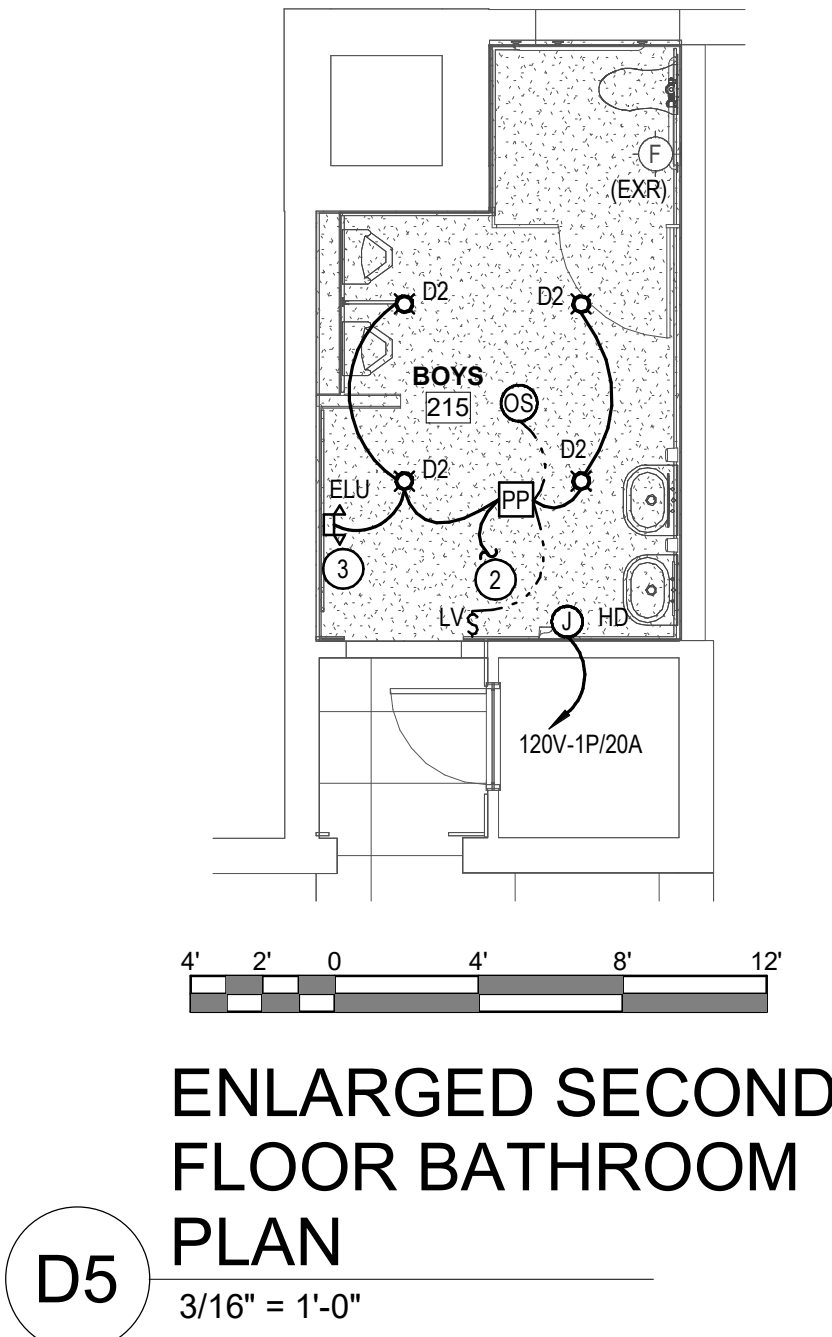
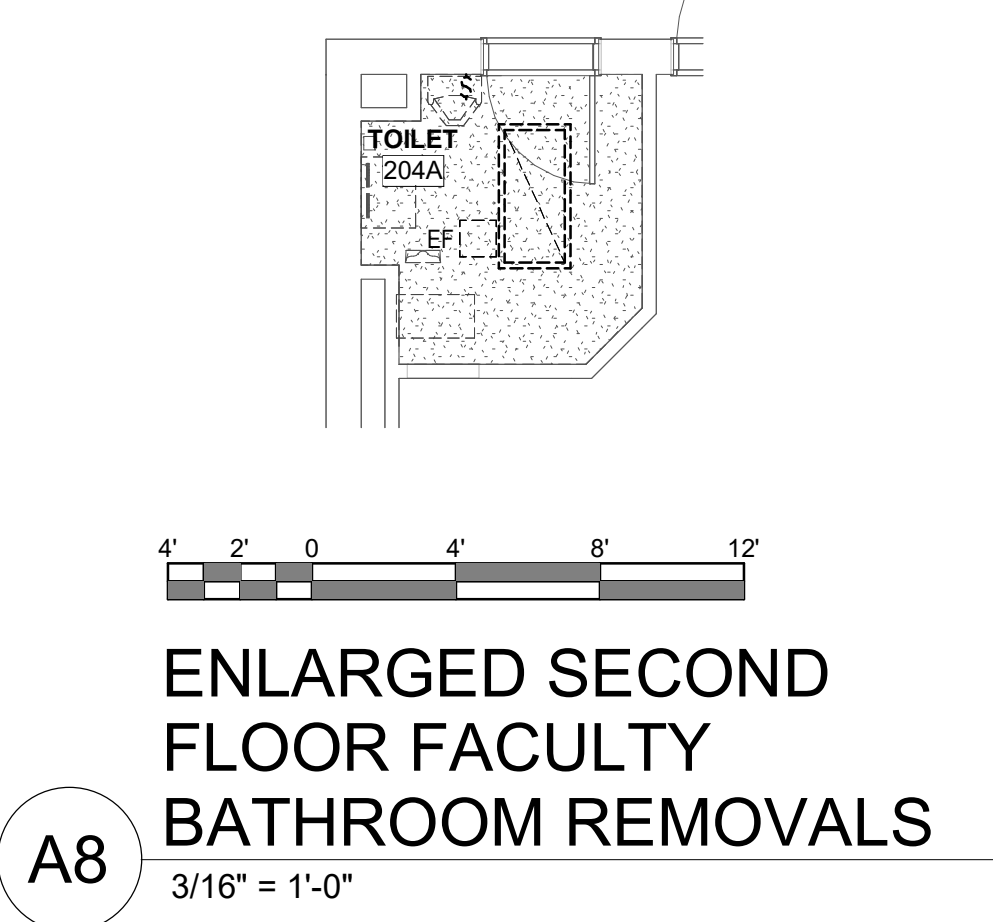
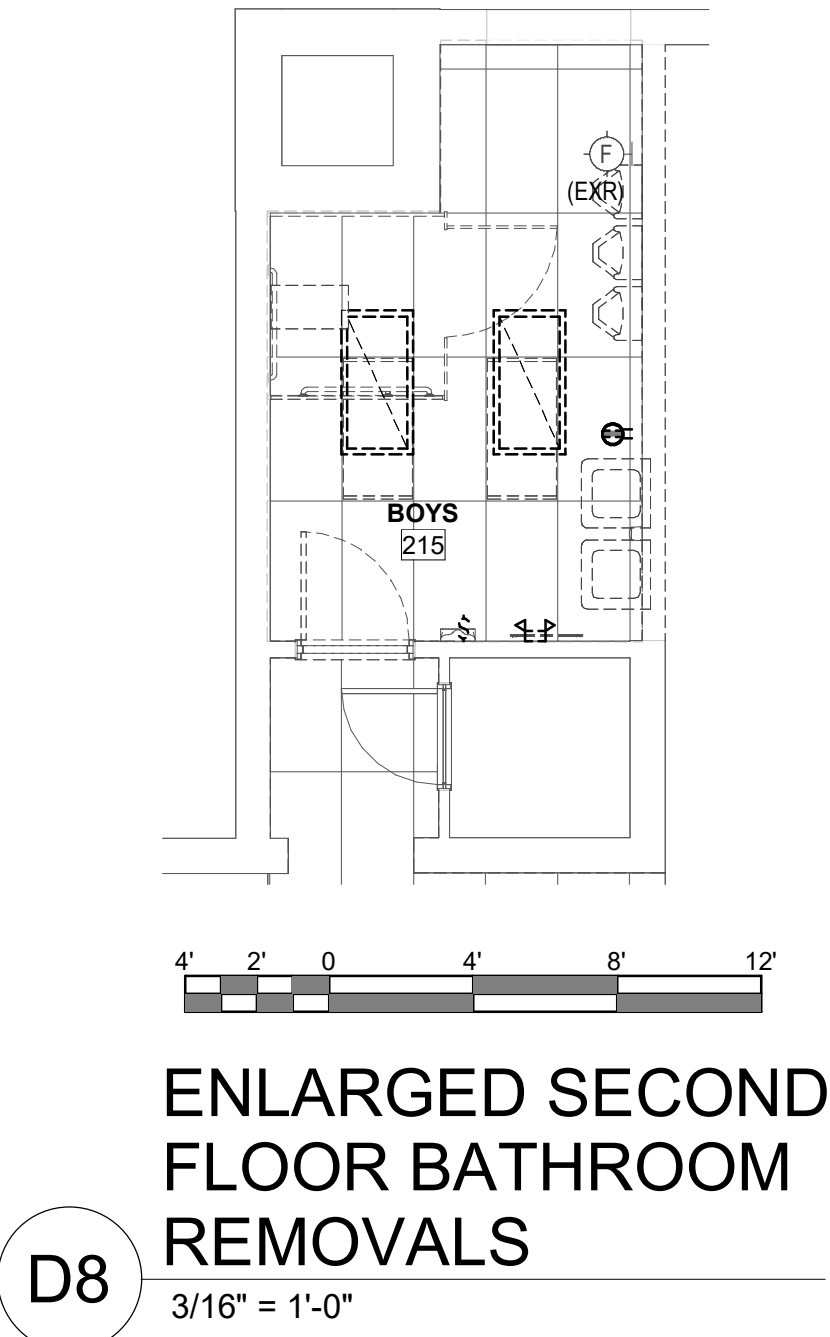


- GENERAL NOTES:**
- SEE HE-E001 FOR GENERAL PROJECT NOTES.
- KEYED NOTES:**
- DISCONNECT AND REMOVE EXISTING EXHAUST FAN PRESERVE CIRCUITING FOR REUSE, COORDINATE REMOVALS WITH MECHANICAL CONTRACT. RECONNECT CIRCUIT TO REPLACEMENT EXHAUST FAN.
  - CONNECT TO EXISTING LIGHTING CIRCUIT THAT FEEDS AREA.
  - PROVIDE EMERGENCY LIGHTING UNIT "ELU" AND CONNECT TO EXISTING CIRCUIT THAT FEEDS LIGHTING AHEAD OF SWITCHING.
  - PROVIDE FIRE ALARM CONTROL RELAY TO SHUT DOWN INDICATED HVAC EQUIPMENT UPON ALARM OF FIRE ALARM SYSTEM.
- LIGHTING CONTROL NARRATIVE**
- WHERE SHOWN WITH WALL MOUNTED VACANCY SENSORS, LIGHTS ARE MANUAL ON, AUTOMATIC OFF AFTER 20 MINUTES WHEN NO MOTION IS DETECTED.
  - FOR BATHROOMS WITH CEILING MOUNTED OCCUPANCY SENSORS, LIGHTS ARE AUTOMATIC ON TO 100%, AUTOMATIC OFF AFTER 20 MINUTES, WITH MANUAL WALL CONTROL.
  - FOR LOUNGES WITH CEILING MOUNTED OCCUPANCY SENSORS, LIGHTS ARE AUTOMATIC ON TO 50%, AUTOMATIC OFF AFTER 20 MINUTES, WITH MANUAL WALL CONTROL DIMMER.
  - FOR CORRIDORS WITH CEILING MOUNTED OCCUPANCY SENSORS, LIGHTS ARE AUTOMATIC ON TO 100%, AUTOMATIC OFF AFTER 20 MINUTES, WITH MANUAL WALL CONTROL ON/OFF.



ARCHITECT

ksqdesign

NEW YORK OKLAHOMA

KSQ Design

215 W 40th Street 15th Floor

New York, NY 10018

646.435.0660 office

www.ksq.design

Owner

Nanuet Union Free School District

101 Church Street

Nanuet, NY 10954

845.627.9880

www.nanuetd.org

Structural Engineer

Clapper Structural Engineering

160 Partition Street

Saugerties, NY 12477

845.943.9801

www.clappersstructural.com

MEP Engineer

Sage Engineering Associates, LLP

9 Columbia Circle

Albany NY 12203

518.453.6091

www.sagegrp.com

and associated LLCs are not licensed in certain states

Environmental Engineer

Quest Environmental Solutions

1376 Route 9

Wappingers Falls, NY 12590

845.298.6251

www.qualityenv.com

Construction Manager

Jacobs

One Penn Plaza

24th Floor, Suite 2400

New York, NY 10119

646.906.6550

www.jacobs.com

NUFSD BOND PROJECT  
PHASE 5 -  
HIGHVIEW

SED#50-01-08-03-0-002-020 (HIGHVIEW ES)

SED#50-01-08-03-7-001-002 (Maintenance)

SED#50-01-08-03-7-012-004 (OEC)

SED#50-01-08-03-0-001-028 (MILLER ES)

SED#50-01-08-03-0-004-022 (BARR MS)

Highview Elementary School

24 Highview Ave

Nanuet, NY 10954

OEC Building

135 Convent Rd

Nanuet, NY 10954

Maintenance Building

103 Church St.

Nanuet, NY 10954

Miller Elementary School

50 Blauvelt Rd Unit 1

Nanuet, NY 10954

A MacArthur Barr Middle School

143 Church St

Nanuet, NY 10954

KEY PLAN

REVISIONS

No.	Description	Date
1	SED ADD #1	11/06/24

ISSUED: BID SET

DATE: 06/21/2024

SCALE: AS NOTED

SHEET NAME:  
OVERALL SECOND  
FLOOR AND ROOF  
ELECTRICAL PLANS

SHEET NUMBER:  

HE-E102

11/16/2024 11:39:13 AM

PROJECT NUMBER: 0000 COPYRIGHT © 2023 KSQ ARCHITECTS, PC

ISSUE FOR BID SET