

GENERAL NOTES:

1. SEE HE-E001 FOR GENRAL PROJECT NOTES.

KEYED NOTES:

- 1) ALL RECEPTACLES REPLACED IN MAIN LOBBY TO HAVE BRONZE FINISH FACEPLATES. COORDINATE WITH ARCHITECTURAL DRAWINGS.
- 2) CLEAN, REUSE EXISTING PENDANT LIGHT. REMOVE ORIGINAL CONDUCTORS SERVING FIXTURES BACK TO SOURCE.
- 3) PROVIDE POE CAMERA AXIS P3235-LIVE 9MM AND 1 CAT 6 CABLE TO CLOSEST DATA COSET CAMERA SERVER. OBTAIN PROGRAMMING SERVICES FROM THE DISTRICT'S PREFERRED ACCESS CONTROL VENDOR A+ TECHNOLOGY & SECURITY SOLUTIONS TO MAKE FINAL CONNECTIONS AND ADD AND PROGRAM THE CAMERA INTO THE EXISTING VIDEO SYSTEM
- 4) PROVIDE WIRING FROM ACCESS CONTROL PANEL TO DOOR CONTACTS. REQUEST TO EXIT, ELECTRIC STRIKE, AND CARD READER. OBTAIN THE SERVICES OF THE DISTRICT'S PREFERRED ACCESS CONTROL VENDOR A+ TECHNOLOGY & SECURITY SOLUTIONS TO PROGRAM THE SYSTEM FOR THE NEW OPENING. PROVIDE PRODUCTS FROM GALLAGHER: DOOR CONTROLLER 6000, LOCK CONTROLLER 3, BUS MODULE 4MBUS, CABLE & GA POWER SUPPLY UNIT, AND T15 CARD READER. PROVIDE EDWARDS MAGNETIC DOOR CONTACTS. PROVIDE 184 AND 226 STRANDED SHIELDED CABLES BACK TO CLOSEST DATA ROOM.
- 5) PROVIDE VIDEO INTERCOM SYSTEM, DOOR REMOTE RELEASE, AND PANIC BUTTON WIRE TO DIRECT DIAL, THE LOCAL POLICE DEPARTMENT. VIDEO INTERCOM AND REMOTE RELEASE CAN BE COMBINED INTO A SINGLE SYSTEM. (AXIS 8800A-VE).
- 6) PROVIDE "CONTACTA" STS-K071 SPEAKER AND MICROPHONE POD SYSTEM FOR SPEAKER VESTIBULE. INSTALL PER MANUFACTURER'S INSTRUCTIONS. LOCATE AMPLIFIER UNDER SECURE SIDE DESK AND PLUG INTO EXISTING RECEPTACLE. PROVIDE ADDITIONAL 1" GROMMET FOR PASS THROUGH WIRING. CONNECT MIC AND SPEAKER USING FACTORY SUPPLIED WIRING ON SECURE SIDE TO AMP. LOCATE MIC AND SPEAKER ON VISITOR SIDE AND RUN WIRING THROUGH PASS THROUGH WINDOW LOCATING MIC ONE FEET OF COUNTER AND SPEAKER ON THE OTHER SIDE OF THE COUNTER. NEATLY TRAIN AND LACE CABLEING ALONG CORNERS.
- 7) REMOVE EXISTING LIGHT FIXTURE. PROVIDE NEW LIGHT FIXTURE, AND FLUSH MOUNTED JUNCTION BOX TO SUPPORT FIXTURE. CONSTRUCTION CONTRACT WILL REMOVE 22% PORTION OF THE CEILING TO ALLOW INSTALLATION OF JUNCTION BOX. PROVIDE WIRING FROM PANEL STAGE, FIRE MISC CABLE ABOVE CEILING FROM FIXTURE TO FIXTURE. PROVIDE UN-SWITCHED HOT AS FIXTURES CANNOT AN INTEGRAL BATTERY PACK.
- 8) PROVIDE EMERGENCY LIGHTING UNIT "ELLY" PACK.
- 9) CONNECT TO EXISTING RECEPTACLE CIRCUIT THAT FEEDS AREA.
- 10) REMOVE EXISTING REMOTE BALLASTS, CONTACTORS, AND ABANDONED WIRING RACEWAY'S/THROUGHS ABOVE PANELBOARD.
- 11) REPLACE EXISTING EXIT AND EXTEILU 4MBUS UNITS. REMOVE EXISTING CIRCUIT. CONNECT TO CIRCUIT SERVING LIGHTING IN THAT AREA.
- 12) PROVIDE CONTROL MODULE FOR FIRE SMOKE DAMPERS. CONNECT 120 VOLT CIRCUIT TO FIRE SMOKE DAMPERS VIA CONTROL MODULE. UPON ALARM OF ADJACENT SMOKE DETECTOR, FIRE SMOKE DAMPERS SHALL CLOSE. OPERATION IS HELD OPEN WITH POWER. CLOSE ON LOSS OF POWER (FALL SAFE).
- 13) PROVIDE AXIS B115-E NETWORK VIDEO INTERCOM WITH DOOR RELEASE. PROVIDE CAT CABLE USING POE INJECTOR TO CAMERA.

LIGHTING CONTROL NARRATIVE:

- WHERE SHOWN WITH WALL MOUNTED VACANCY SENSORS, LIGHTS ARE MANUAL ON, AUTOMATIC OFF AFTER 20 MINUTES WHEN NO MOTION IS DETECTED.
- FOR BATHROOMS WITH CEILING MOUNTED OCCUPANCY SENSORS, LIGHTS ARE AUTOMATIC ON TO 100%, AUTOMATIC OFF AFTER 20 MINUTES, WITH MANUAL WALL CONTROL.
- FOR ENCLOSED OFFICES WITH CEILING MOUNTED OCCUPANCY SENSORS, LIGHTS ARE MANUAL ON, AUTOMATIC OFF AFTER 20 MINUTES WHEN NO MOTION IS DETECTED.
- FOR AREAS WITH CEILING MOUNTED OCCUPANCY SENSORS, LIGHTS ARE MANUAL ON VIA LOW VOLTAGE SWITCHES, AUTOMATIC OFF AFTER 20 MINUTES WHEN NO MOTION IS DETECTED.

ARCHITECT

ksqdesign

NEW YORK OKLAHOMA

**KSQ Design**  
215 W 40th Street 15th Floor  
New York, NY 10018  
646.435.0660 office  
[www.ksq.design](http://www.ksq.design)

Owner

**Nanuet Union Free School District**  
101 Church Street  
Nanuet, NY 10954  
845.627.9880  
[www.nanuet.org](http://www.nanuet.org)

**Structural Engineer**

**Clapper Structural Engineering**  
160 Partition Street  
Saugerties, NY 12477  
845.943.9601  
[www.clapperstructural.com](http://www.clapperstructural.com)

MEP Engineer

**Sage Engineering Associates, LLP**  
9 Columbia Circle  
Albany NY 12203  
518.453.6091  
[www.sagellp.com](http://www.sagellp.com)

Environmental Engineer

**Quest Environmental Solutions**  
1376 Route 9  
Wappingers Falls, NY 12590  
845.298.6251  
[www.qualityenv.com](http://www.qualityenv.com)

Construction Manager

**Jacobs**  
One Penn Plaza  
24<sup>th</sup> Floor, Suite 2400  
New York, NY 10119  
646.908.6550  
[www.jacobs.com](http://www.jacobs.com)



NUFSD BOND  
PROJECT  
PHASE 5 -  
HIGHVIEW

SED#50-01-08-03-0-002-020 (HIGHVIEW ES)  
SED#50-01-08-03-7-007-002 (Maintenance)  
SED#50-01-08-03-7-012-004 (OEC)  
SED#50-01-08-03-0-001-026 (MILLER ES)  
SED#50-01-08-03-0-004-022 (BARR MS)

Highview Elementary School  
24 Highview Ave  
Nanuet, NY 10954

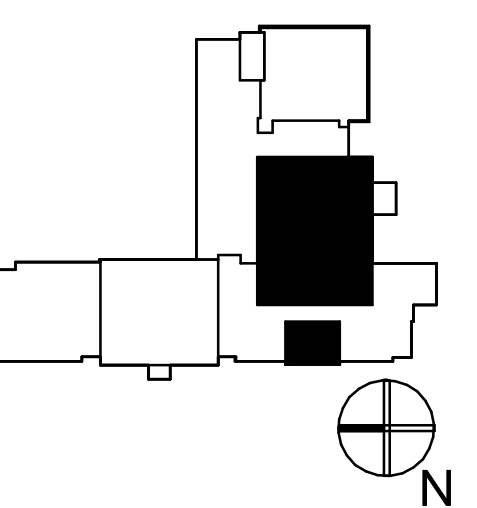
OEC Building  
135 Convent Rd  
Nanuet, NY 10954

Maintenance Building  
103 Church St.  
Nanuet, NY 10954

Miller Elementary School  
50 Blauvelt Rd Unit1  
Nanuet, NY 10954

MacArthur Barr Middle School  
143 Church St  
Nanuet, NY 10954

## KEY PLAN



## REVISIONS

No.	Description	Date
1	Addendum #2	01/30/25

**ISSUED: BID SET**

DATE: 06/21/2024

SCALE: AS NOTED

**SHEET NAME:**  
ENLARGED ELECTRICAL  
PLANS

HE-E401

# ISSUE FOR BID SET