

- KEYED NOTES:**
- CONNECT TO EXISTING, HORIZONTAL 18"x18" EA DUCT LOCATED IN ATTIC SPACE ABOVE SECOND FLOOR AND EXTEND THE HORIZONTAL DUCT AS SHOWN, THEN PROVIDE A 15"x15" TAP OFF THE TOP OF THE HORIZONTAL 18"x18" EA DUCT AND ROUTE THE 15"x15" EA RISER UP THROUGH ROOF TO EF-HE-2.
  - REINSTALL SALVAGED TEMPERATURE SENSOR AT LOCATION SHOWN. EXTEND CONTROL WIRING FROM ORIGINAL SENSOR LOCATION TO REINSTALLED LOCATION.
  - CONNECT TO EXISTING 3/4" HWS/R PIPING BETWEEN CONNECTION POINTS SHOWN AND RECONNECT HWS/R PIPING FOLLOWING WALL INSTALLATION WORK.
  - CONNECT TO SA MAIN AT LOCATION SHOWN AND ROUTE 6" ROUND SA DUCTWORK AS SHOWN. PROVIDE FLEXIBLE DUCTWORK CONNECTION TO EXISTING SA DIFFUSER AND REBALANCE SUPPLY AIRFLOW THROUGH EXISTING, REUSED SA DIFFUSER TO AIRFLOW AMOUNT SHOWN WITH EXISTING AHU SUPPLY FAN OPERATING.
  - CONNECT TO SA MAIN AT LOCATION SHOWN AND ROUTE 6" ROUND SA DUCTWORK AS SHOWN. PROVIDE FLEXIBLE DUCTWORK CONNECTION TO SA DIFFUSER AND BALANCE SUPPLY AIRFLOW THROUGH SA DIFFUSER TO AIRFLOW AMOUNT SHOWN WITH EXISTING AHU SUPPLY FAN OPERATING.
  - UTILIZE THE TWO (2) EXISTING 4'-0" WIDE x 8'-0" HIGH HALF-OPENABLE WINDOWS FOR NATURAL VENTILATION, TOTAL OF 32 SQUARE FEET OPENABLE AREA, TO PROVIDE NATURAL VENTILATION TO MAIN OFFICE 110 AND GREETING BOOTH 111 PER NYS MECHANICAL CODE 402.1. ALSO, UTILIZE NYS MECHANICAL CODE PART 402.3, NATURAL VENTILATION TO ADJOINING SPACES, TO PROVIDE NATURAL VENTILATION TO THE GREETING BOOTH 111 UTILIZING THE TRANSFER DUCTS SHOWN BETWEEN THE OFFICE AND THE GREETING BOOTH.
  - CONNECT TO EXISTING, EXPOSED HWS/R RISERS WITHIN CLOSET 207D AT FLOOR LEVEL AND ROUTE 1/2" HWS/R PIPING TO RADIATOR R-HE-2 WITHIN TOILET 111A AS REQUIRED.
  - BALANCE AIRFLOW THROUGH EXISTING EA REGISTER LOCATED APPROXIMATELY 6" ABOVE FLOOR LEVEL TO 350 CFM WITH EF-HE-2 OPERATING AT SCHEDULED AIRFLOW RATE.
  - BALANCE AIRFLOW THROUGH EXISTING DUCT MOUNTED EA REGISTER TO 100 CFM WITH EF-HE-2 OPERATING AT SCHEDULED AIRFLOW RATE.
  - BALANCE AIRFLOW THROUGH EXISTING WALL MOUNTED EA REGISTER LEVEL TO 115 CFM WITH EF-HE-1 OPERATING AT SCHEDULED AIRFLOW RATE.
  - BALANCE AIRFLOW THROUGH EXISTING CEILING MOUNTED EA REGISTER LEVEL TO 385 CFM WITH EF-HE-1 OPERATING AT SCHEDULED AIRFLOW RATE.
  - MOUNT TRANSFER DUCT AND ASSOCIATED TRANSFER REGISTERS APPROXIMATELY 6'-6" FROM FINISHED FLOOR LEVEL TO BOTTOM OF TRANSFER DUCT.
  - BALANCE AIRFLOW THROUGH EXISTING WALL MOUNTED EA REGISTER LEVEL TO 75 CFM WITH EF-HE-1 OPERATING AT SCHEDULED AIRFLOW RATE.
  - BALANCE AIRFLOW THROUGH EXISTING CEILING MOUNTED EA REGISTER LEVEL TO 355 CFM WITH EF-HE-1 OPERATING AT SCHEDULED AIRFLOW RATE.

**ARCHITECT**

**ksqdesign**

NEW YORK OKLAHOMA

**KSQ Design**  
215 W 40th Street 15th Floor  
New York, NY 10018  
646.435.0660 office  
www.ksqdesign.com

**Owner**

**Nanuet Union Free School District**  
101 Church Street  
Nanuet, NY 10954  
845.627.9880  
www.nanuetusd.org

**Structural Engineer**

**Clapper Structural Engineering**  
160 Partition Street  
Saugerties, NY 12477  
845.943.9801  
www.clappersstructural.com

**MEP Engineer**

**Sage Engineering Associates, LLP**  
9 Columbia Circle  
Albany, NY 12203  
518.453.6091  
www.sageip.com  
www.sageip.com is not a registered domain name

**Environmental Engineer**

**Quest Environmental Solutions**  
1376 Route 9  
Wappingers Falls, NY 12590  
845.298.6251  
www.qualityenv.com

**Construction Manager**

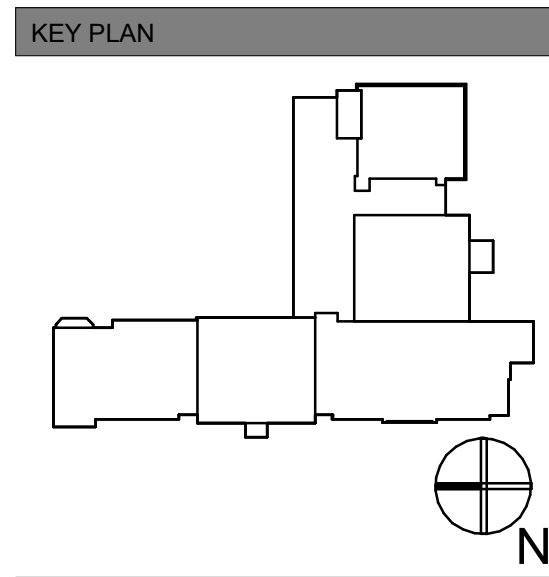
**Jacobs**  
One Penn Plaza  
24th Floor, Suite 2400  
New York, NY 10119  
646.906.6550  
www.jacobs.com



## NUFSD BOND PROJECT PHASE 5 - HIGHVIEW

- SED#50-01-08-03-0-002-020 (HIGHVIEW ES)
- SED#50-01-08-03-7-001-002 (Maintenance)
- SED#50-01-08-03-7-012-004 (OEC)
- SED#50-01-08-03-0-001-028 (MILLER ES)
- SED#50-01-08-03-0-004-022 (BARR MS)

- Highview Elementary School**  
24 Highview Ave  
Nanuet, NY 10954
- OEC Building**  
135 Convent Rd  
Nanuet, NY 10954
- Maintenance Building**  
103 Church St.  
Nanuet, NY 10954
- Miller Elementary School**  
50 Blauvelt Rd Unit 1  
Nanuet, NY 10954
- A MacArthur Barr Middle School**  
143 Church St  
Nanuet, NY 10954



REVISIONS		
No.	Description	Date
1	BID ADDENDUM #4	02/05/25

**ISSUED: BID SET**  
**DATE:** 06/21/2024  
**SCALE:** 1/4" = 1'-0"  
**SHEET NAME:**  
1ST FLOOR VESTIBULE,  
2ND FLOOR, AND ATTIC  
LEVEL HVAC PLANS  
**SHEET NUMBER:**

# HE-M105

ISSUE FOR BID SET

2/14/2025 9:42:09 AM