

[illegible]

CLIENT

VAILS GATE FIRE DISTRICT



CONTRACT

CONTRACT G

GENERAL CONSTRUCTION

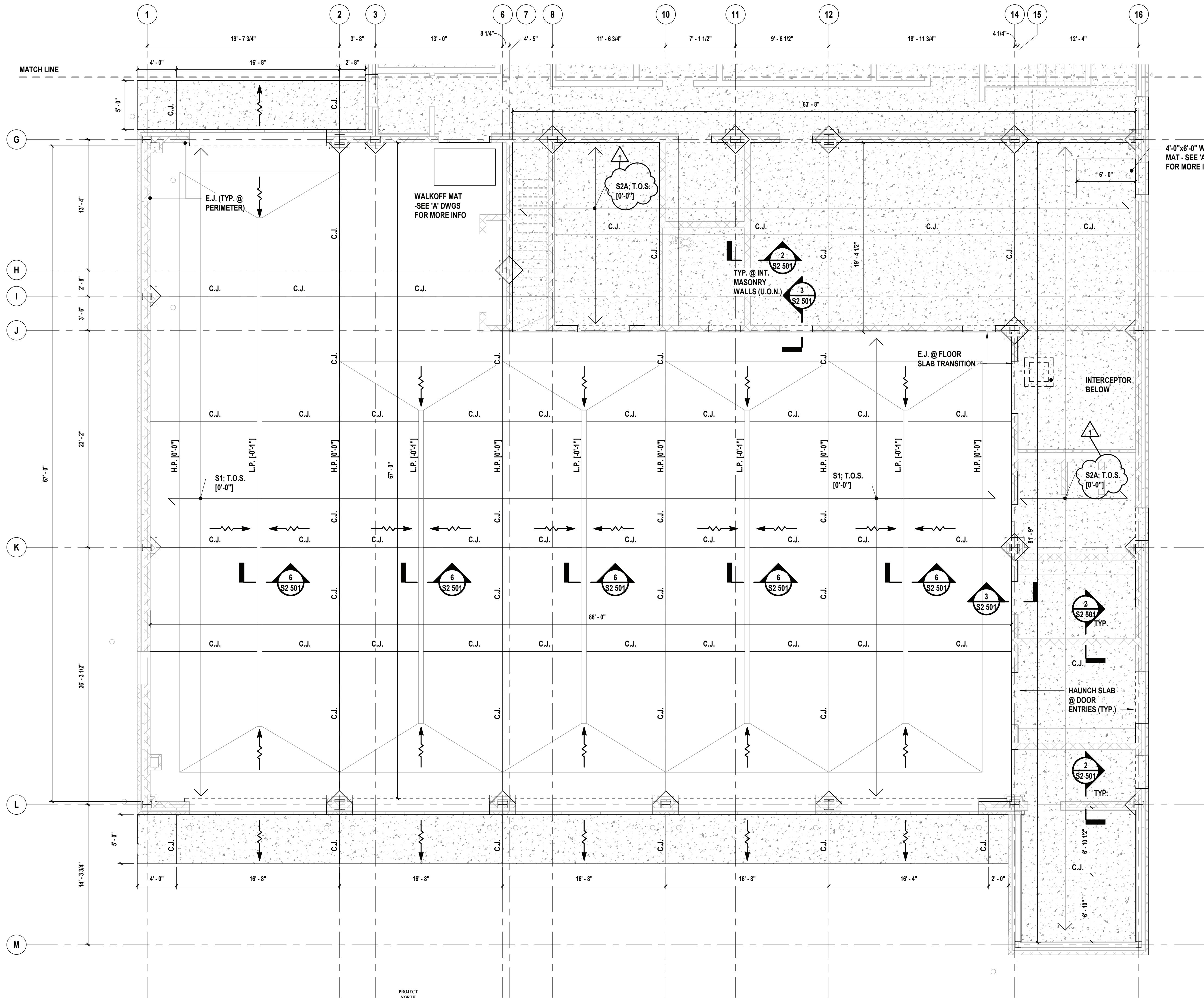
STATUS	FINAL BID DOCUMENT
--------	---------------------------

SHEET TITLE

**ARCHITECTURE
PHASING PLAN**

DRAWING No. **G 007.01**





1 Partial First Floor Slab Plan - South End
SCALE: 3/16" = 1'-0"

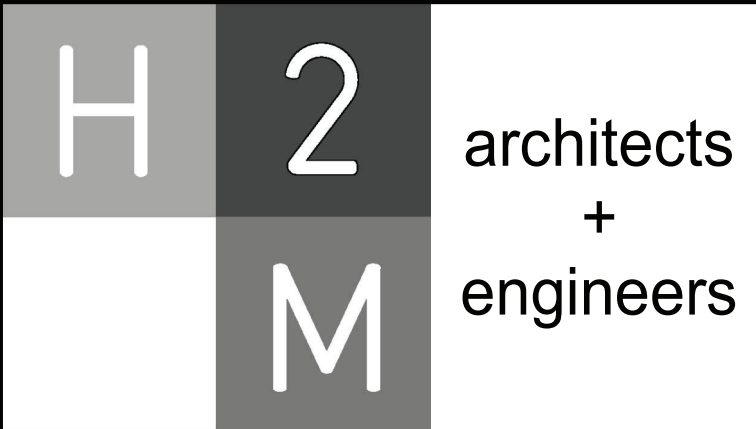
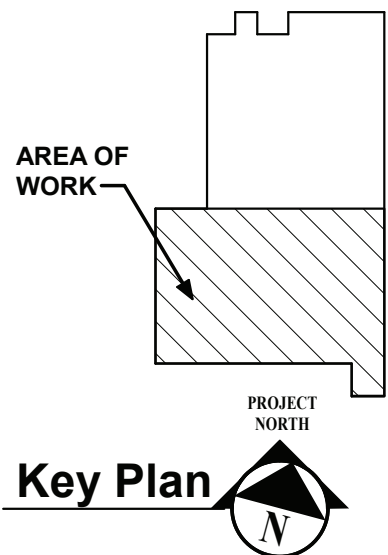
LEGEND:
C.J. = CONTROL JOINT
E.J. = EXPANSION JOINT
E.O.S. = EDGE OF SLAB
T.O.S. = TOP OF SLAB
U.O.N. = UNLESS OTHERWISE NOTED
H.P. = HIGH POINT OF PITCHED SLAB
L.P. = LOW POINT OF PITCHED SLAB
INDICATES PITCH DIRECTION OF SLAB

SLAB NOTES:

- ELEVATIONS SHOWN THUS [] ARE RELATIVE TO FINISHED FIRST FLOOR DATUM ELEVATION [0'-0"] (EQUIVALENT TO 266.00' ON CIVIL DWGS).
- S1 INDICATES SPAN ON 8" CONCRETE SLAB ON GRADE REINFORCED WITH (2) LAYERS OF 6x6-W4.0xW4.0 W.W.M. W/ RADIANT HEAT TUBES
- S2A INDICATES SPAN ON 6" CONCRETE SLAB ON GRADE REINFORCED WITH 6x6-W2.9xW2.9 W.W.M. W/ RADIANT HEAT TUBES
- PROVIDE 1/2" PRE-MOLDED EXPANSION JOINT AROUND PERIMETER OF CONCRETE SLAB ON GRADE WHERE IT ABUTS THE FOUNDATION WALL OF THE BUILDING.

MASONRY NOTES:

- ALL VERTICAL MASONRY WALL REINFORCEMENT SHALL BE #6 BARS SPACED AT MAXIMUM OF 32" O.C., TYP. UNLESS OTHERWISE NOTED. PROVIDE #6 @ 48" O.C. FOR NON-LOAD BEARING CMU PARTITIONS.
- THE FIRST CELL ADJACENT TO MASONRY OPENINGS, AS WELL AS ALL CORNERS, SHALL CONTAIN (1) CONT. #5 BAR, TYP. AT EACH SIDE OF OPENING.
- FILL ALL MASONRY CELLS CONTAINING REINFORCEMENT SOLID WITH MORTAR, TYP.
- REFER TO 'A' DWGS AND SPECIFICATIONS FOR ADDITIONA REQUIREMENTS NOT OUTLINED HERE, INCLUDING HORIZONTAL REINFORCEMENT AND BRICK TIES.
- ALL VERTICAL REINFORCEMENT INTERRUPTED BY STRUCTURAL STEEL SHALL BE WELDED TO TOP OF STEEL MEMBERS, TYP.
- COORDINATE PLACEMENT OF VERTICAL WALL DOWELS EMBEDDED INTO FOUNDATION WALL WITH CELLS OF MASONRY WALL. DOWEL SPACING TO MATCH SPACING OF VERTICAL REINFORCEMENT IN WALLS, TYP.



538 Broad Hollow Road, 4th Floor East
Melville, NY 11747
631.756.8000 • www.h2m.com

CONSULTANTS:

MARK	DATE	DESCRIPTION
1	8/24/2022	ADDENDUM #1

DESIGNED BY: MDH	DRAWN BY: MDH	CHECKED BY:	REVIEWED BY:
PROJECT No: VGFD2001	DATE: JULY 2022	SCALE:	AS SHOWN

CLIENT

VAILS GATE FIRE DISTRICT

New Storage Building (Phase I)
New Fire Station (Phase II)



872 Blooming Grove Turnpike
New Windsor, NY 12553

CONTRACT
CONTRACT G GENERAL CONSTRUCTION

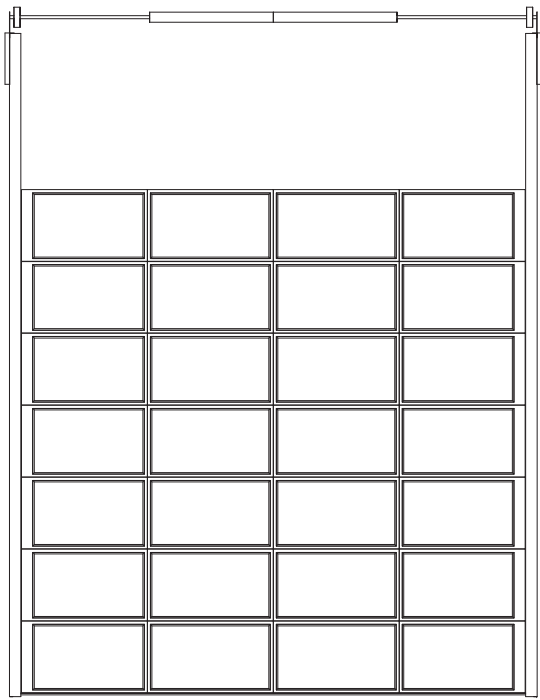
STATUS
FINAL BID DOCUMENT

SHEET TITLE
STRUCTURAL PARTIAL SLAB PLAN - SOUTH END

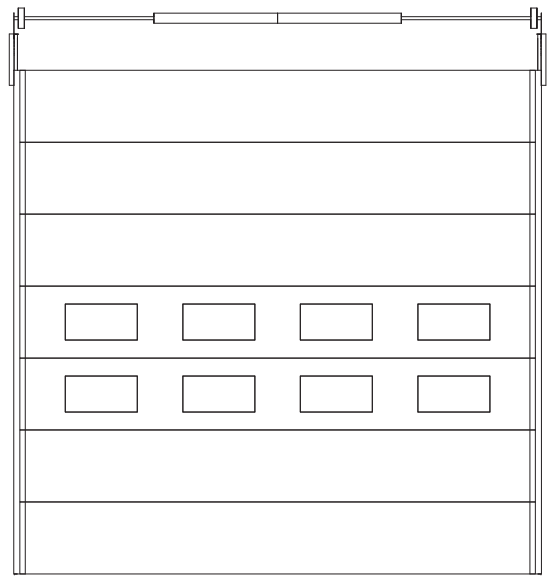
DRAWING No.
S2 110.01

C:\Users\lguzman\Documents\VGFD2001_Central2_A_1\guzman622.rvt 8/19/2022 10:02:56 AM

DOOR SCHEDULE																								
DOOR NO.	FROM ROOM		TO ROOM		DOOR SIZE			DOOR			FRAME			DETAILS			FIRE RATING	HARDWARE SET	SECURITY ACCESS	SELF CLOSING	DOOR SIGNAGE	WEATHER STRIPPING	PANIC HARDWARE	COMMENTS
	NAME	NUMBER	NAME	NUMBER	WIDTH	HEIGHT	THICKNESS	DOOR TYPE	DOOR MATERIAL	DOOR FINISH	FRAME TYPE	FRAME MATERIAL	FRAME FINISH	HEAD	JAMB	SADDLE								
101A	EXTERIOR	EXT.	APPARATUS ROOM	101	36"	84"	1 3/4"	7	HM	PAINT	F2	HM	PAINT	DH1	DJ1	DS7	-	HS1	-	*	-	*	*	
101B	EXTERIOR	EXT.	APPARATUS ROOM	101	36"	84"	1 3/4"	7	HM	PAINT	F2	HM	PAINT	DH1	DJ1	DS7	-	HS1	-	*	-	*	*	
101C	APPARATUS ROOM	101	CORRIDOR	113	(2) 36" + 24"	84"	1 3/4"	2	HM	PAINT	F2	HM	PAINT	DH4	DJ4	DS6	1 HR	HS7	-	*	*	-	-	VISION PANEL
102	APPARATUS ROOM	101	RADIO ROOM	102	36"	84"	1 3/4"	7	HM	PAINT	F2	HM	PAINT	DH4	DJ4	DS6	1 HR	HSSA	-	*	*	-	-	
103A	APPARATUS ROOM	101	STORAGE 1	103	(2) 36" + 24"	84"	1 3/4"	2	HM	PAINT	F2	HM	PAINT	DH3	DJ3	-	1 HR	HS7	-	*	*	-	-	
103B	EXTERIOR	EXT.	STORAGE 1	103	(2) 36" + 24"	84"	1 3/4"	2	HM	PAINT	F2	HM	PAINT	DH1	DJ1	DS7	-	HS7A	-	-	-	*	-	
104	APPARATUS ROOM	101	STORAGE 2	104	36"	84"	1 3/4"	1	HM	PAINT	F2	HM	PAINT	DH3	DJ3	-	1 HR	HS3B	-	*	*	-	-	
105A	APPARATUS ROOM	101	DECON ROOM	105	36"	84"	1 3/4"	6	HM	PAINT	F2	HM	PAINT	DH3	DJ3	-	1 HR	HS4	-	*	*	-	-	
105B	EXTERIOR	EXT.	DECON ROOM	105	36"	84"	1 3/4"	1	HM	PAINT	F2	HM	PAINT	DH1	DJ1	DS7	-	HS14	-	*	*	-	-	
106	APPARATUS ROOM	101	LAUNDRY	106	(2) 36" + 24"	84"	1 3/4"	2	HM	PAINT	F2	HM	PAINT	DH3	DJ3	-	-	HS7	-	-	*	-	-	VISION PANEL AND LOUVER
107A	APPARATUS ROOM	101	GEAR ROOM	107	36"	84"	1 3/4"	7	HM	PAINT	F2	HM	PAINT	DH3	DJ3	-	1 HR	HS2	-	*	*	-	-	
107B	APPARATUS ROOM	101	GEAR ROOM	107	36"	84"	1 3/4"	7	HM	PAINT	F2	HM	PAINT	DH3	DJ3	-	1 HR	HS2	-	*	*	-	-	
107C	EXTERIOR	EXT.	GEAR ROOM	107	36"	84"	1 3/4"	7	HM	PAINT	F2	HM	PAINT	DH1	DJ1	DS7	-	HS1	-	*	-	*	*	
107D	GEAR ROOM	107	CORRIDOR	113	36"	84"	1 3/4"	7	HM	PAINT	F2	HM	PAINT	DH4	DJ4	DS6	-	HS2	-	*	*	-	-	
108	APPARATUS ROOM	101	TOILET ROOM	108	36"	84"	1 3/4"	6	HM	PAINT	F2	HM	PAINT	DH3	DJ3	DS6	-	HS4	-	*	*	-	-	
109	APPARATUS ROOM	101	SCBA	109	(2) 36" + 24"	84"	1 3/4"	2	HM	PAINT	F2	HM	PAINT	DH3	DJ3	DS6	-	HS7	-	-	*	-	-	VISION PANEL AND LOUVER
111	CORRIDOR	113	SPARE TURNOUT GEAR	111	36"	84"	1 3/4"	6	HM	PAINT	F1	HM	PAINT	DH4	DJ4	DS6	1 HR	HS3	-	*	*	-	-	
112A	EXTERIOR	EXT.	VENDOR DROP OFF	112	36"	84"	1 3/4"	3	HM	PAINT	F2	HM	PAINT	DH2	DJ2	DS5	-	HS14	-	*	*	-	-	
112B	VENDOR DROP OFF	112	CORRIDOR	113	36"	84"	1 3/4"	3	HM	PAINT	F1	HM	PAINT	DH5	DJ5	-	-	HS3A	-	-	*	-	-	NOT AN EXIT SIGNAGE
113A	CORRIDOR	113	STAIR 'A'	A	36"	84"	1 3/4"	7	WD	STAIN	F1	HM	PAINT	DH5	DJ5	-	1 HR	HS6	-	*	*	-	*	
113B	EXTERIOR	EXT.	STAIR 'A'	A	36"	84"	1 3/4"	7	HM	PAINT	F2	HM	PAINT	DH2	DJ2	DS5	-	HS1	-	*	-	*	*	
114	CORRIDOR	113	QUARTERMASTER	114	36"	84"	1 3/4"	6	WD	STAIN	F1	HM	PAINT	DH5	DJ5	DS6	1 HR	HS3B	-	*	*	-	-	
115	CORRIDOR	113	JANITORS CLOSET	115	36"	84"	1 3/4"	6	WD	STAIN	F1	HM	PAINT	DH5	DJ5	DS4	-	HS3B	-	-	*	-	-	
116A	CORRIDOR	113	MEETING ROOM	116	36"	84"	1 3/4"	5	WD	STAIN	F1	HM	PAINT	DH5	DJ5	-	-	HS3A	-	*	*	-	-	NOT AN EXIT SIGNAGE
116B	EXTERIOR	EXT.	MEETING ROOM	116	36"	84"	1 3/4"	7	WD	STAIN	F1	HM	PAINT	DH2	DJ2	DS5	-	HS1	-	*	-	*	*	
116C	LOBBY	125A	MEETING ROOM	116	(2) 36"	84"	1 1/2"	5	WD	STAIN	F1	HM	PAINT	DH5	DJ5	DS8	-	HS10	-	*	*	-	*	
117	MEETING ROOM	116	STORAGE	117	(2) 36" + 24"	84"	1 3/4"	2	WD	STAIN	F1	HM	PAINT	DH5	DJ5	-	1 HR	HS7	-	*	*	-	-	LOUVER
118A	CORRIDOR	113	KITCHEN	118	36"	84"	1 3/4"	1	WD	STAIN	F1	HM	PAINT	DH5	DJ5	DS2	-	HS3A	-	*	*	-	-	NOT AN EXIT SIGNAGE
118B	MEETING ROOM	116	KITCHEN	118	36"	84"	1 3/4"	5	WD	STAIN	F1	HM	PAINT	DH5	DJ5	DS2	-	HSSA	-	-	*	-	-	
119	KITCHEN	118	PANTRY	119	36"	84"	1 3/4"	6	WD	STAIN	F1	HM	PAINT	DH5	DJ5	DS2	1 HR	HS3	-	*	*	-	-	
120	CORRIDOR	113	READY ROOM	120	36"	84"	1 3/4"	3	WD	STAIN	F1	HM	PAINT	DH5	DJ5	DS6	-	HS5	-	-	*	-	-	
121	CORRIDOR	113	MECHANICAL ROOM	121	(2) 36" + 24"	84"	1 3/4"	2	WD	STAIN	F1	HM	PAINT	DH5	DJ5	DS4	1 HR	HS7	-	*	*	-	-	
122	CORRIDOR	113	ELECTRICAL ROOM	122	36"	84"	1 3/4"	1	WD	STAIN	F1	HM	PAINT	DH5	DJ5	DS4	1 HR	HS8	-	*	*	-	-	
123	CORRIDOR	113	ELEVATOR LOBBY	123	36"	84"	1 3/4"	7	WD	STAIN	F1	HM	PAINT	DH5	DJ5	DS6	-	HS6A	-	*	-	-	*	
125A	LOBBY	125A	ELEVATOR LOBBY	123	36"	84"	1 3/4"	7	WD	STAIN	F1	HM	PAINT	DH5	DJ5	DS6	-	HS6	-	*	-	-	*	
125B	LOBBY	125A	CLOSET	125B	(2) 30"	84"	1 3/4"	6	WD	STAIN	F1	HM	PAINT	DH5	DJ5	DS6	-	HS9	-	-	*	-	-	
126A	EXTERIOR	EXT.	VESTIBULE	126	72"	84"	1 3/4"	4	ALM	AN	F1	ALM	AN	DH5	DJ5	DS1	-	HS11	-	*	-	*	*	STOREFRONT SYSTEM - 1" INSULATED GLAZING
126B	LOBBY	125A	VESTIBULE	126	72"	84"	1 3/4"	4	ALM	AN	F1	ALM	AN	DH5	DJ5	DS3	-	HS11A	-	*	-	-	-	STOREFRONT SYSTEM - 1/4" GLAZING
127	LOBBY	125A	MEN'S TOILET ROOM	127	36"	84"	1 3/4"	6	WD	STAIN	F1	HM	PAINT	DH5	DJ5	DS3	-	HS2	-	*	*	-	-	
128	LOBBY	125A	WOMEN'S TOILET ROOM	128	36"	84"	1 3/4"	6	WD	STAIN	F1	HM	PAINT	DH5	DJ5	DS3	-	HS2	-	*	*	-	-	
OH1	EXTERIOR	EXT.	APPARATUS ROOM	101	168"	168"	3"	O-1	MFR.	MFR.	MFR.	MFR.	MFR.	1/A2 522	2/A2 522	3/A2 522	-	-	-	-	-	-	-	
OH2	EXTERIOR	EXT.	APPARATUS ROOM	101	168"	168"	3"	O-1	MFR.	MFR.	MFR.	MFR.	MFR.	1/A2 522	2/A2 522	3/A2 522	-	-	-	-	-	-	-	
OH3	EXTERIOR	EXT.	APPARATUS ROOM	101	168"	168"	3"	O-1	MFR.	MFR.	MFR.	MFR.	MFR.	1/A2 522	2/A2 522	3/A2 522	-	-	-	-	-	-	-	
OH4	EXTERIOR	EXT.	APPARATUS ROOM	101	168"	168"	3"	O-1	MFR.	MFR.	MFR.	MFR.	MFR.	1/A2 522	2/A2 522	3/A2 522	-	-	-	-	-	-	-	
OH5	EXTERIOR	EXT.	APPARATUS ROOM	101	168"	168"	3"	O-1	MFR.	MFR.	MFR.	MFR.	MFR.	1/A2 522	2/A2 522	3/A2 522	-	-	-	-	-	-	-	
OH6	EXTERIOR	EXT.	APPARATUS ROOM	101	168"	168"	3"	O-2	MFR.	MFR.	MFR.	MFR.	MFR.	1/A2 522	2/A2 522	3/A2 522	-	-	-	-	-	-	-	
201	CORRIDOR	201	STAIR 'B'	B	36"	84"	1 3/4"	1	WD	STAIN	F1	HM	PAINT	DH5	DJ5	DS6	1 HR	HS6	-	*	*	-	*	
202	CORRIDOR	201	CONFERENCE ROOM	202	36"	84"	1 3/4"	1	WD	STAIN	F1	HM	PAINT	DH5	DJ5	DS6	-	HSSA	-	-	*	-	-	
203A	COMPANY ROOM	203A	CORRIDOR	201	36"	84"	1 3/4"	1	WD	STAIN	F1	HM	PAINT	DH5	DJ5	DS6	-	HS5	-	-	*	-	-	
203B	COMPANY ROOM	203A	TRAINING ROOM	206	36"	84"	1 3/4"	7	WD	STAIN	F1	HM	PAINT	DH5	DJ5	DS6	-	HSSA	-	-	*	-	-	
204	COMPANY ROOM	203A	STORAGE	204	36"	84"	1 3/4"	6	WD	STAIN	F1	HM	PAINT	DH5	DJ5	DS6	1 HR	HS3	-	*	*	-	-	
205	TRAINING ROOM	206	STORAGE	205	(2) 36" + 24"	84"	1 3/4"	2	WD	STAIN	F1	HM	PAINT	DH5	DJ5	DS6	1 HR	HS7	-	*	*	-	-	



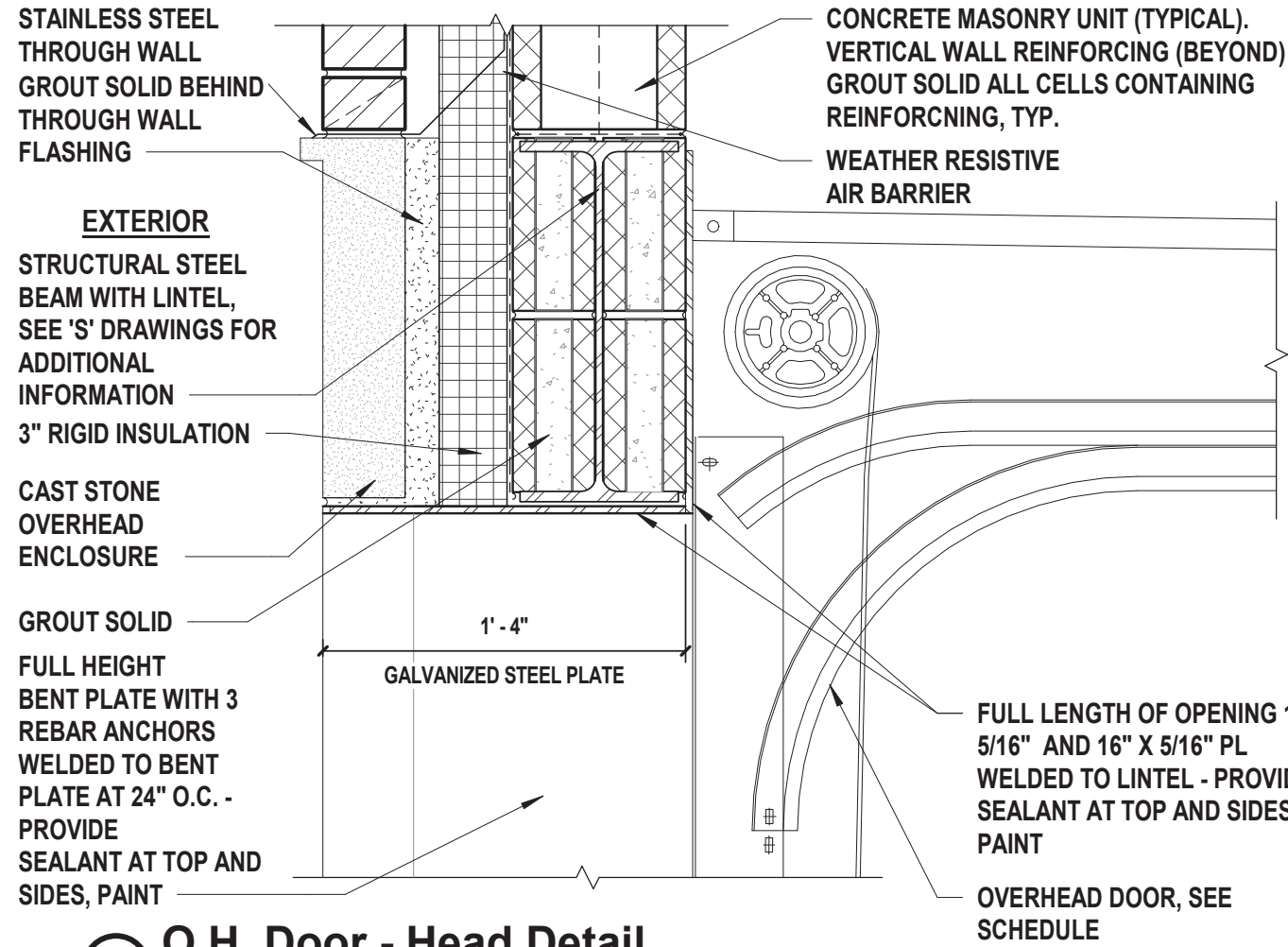
TYPE O-1



TYPE O-2

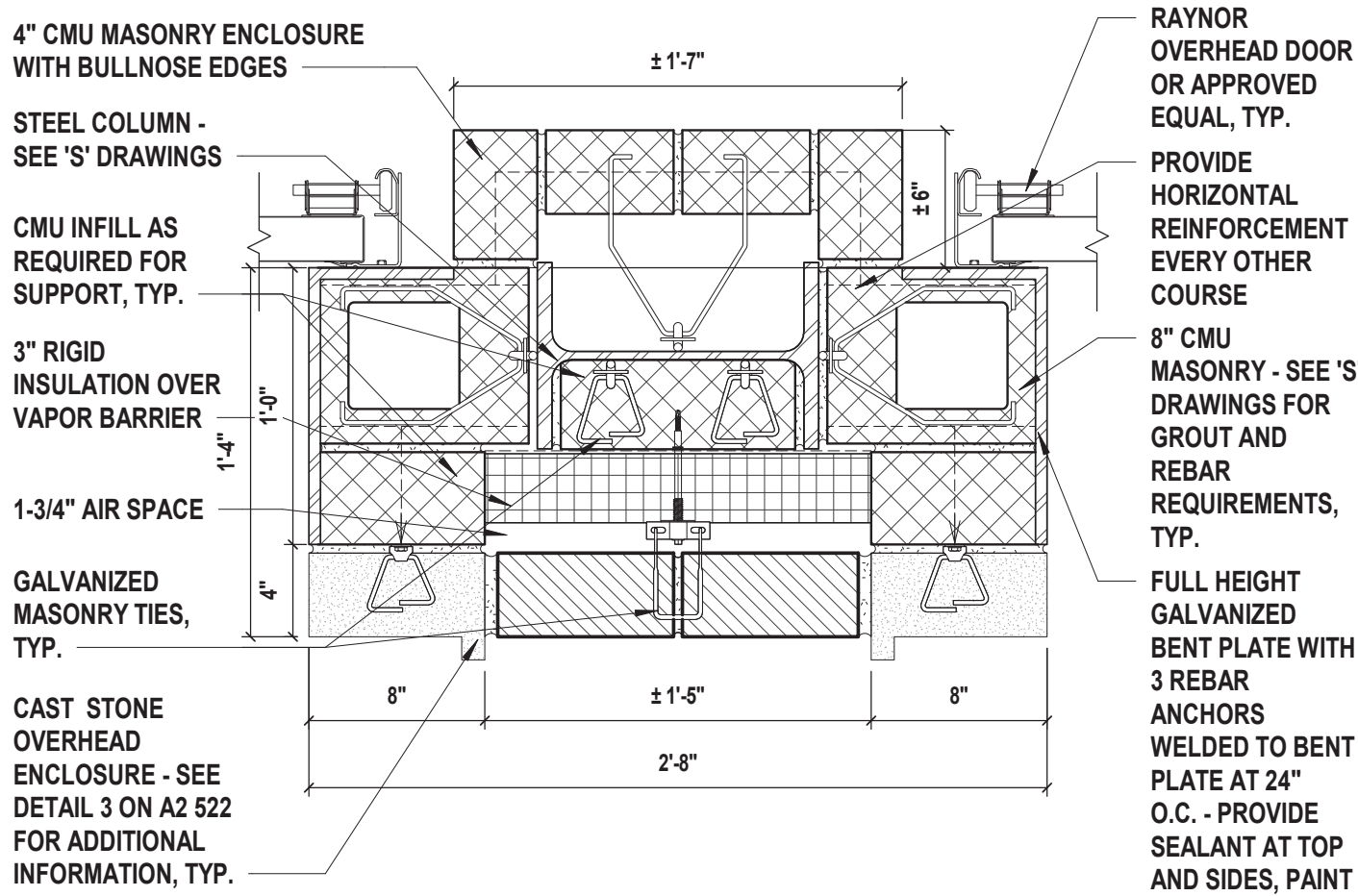
Overhead Door Types

SCALE: 3/16" = 1'-0"



1 O.H. Door - Head Detail

SCALE: 1 1/2" = 1'-0"



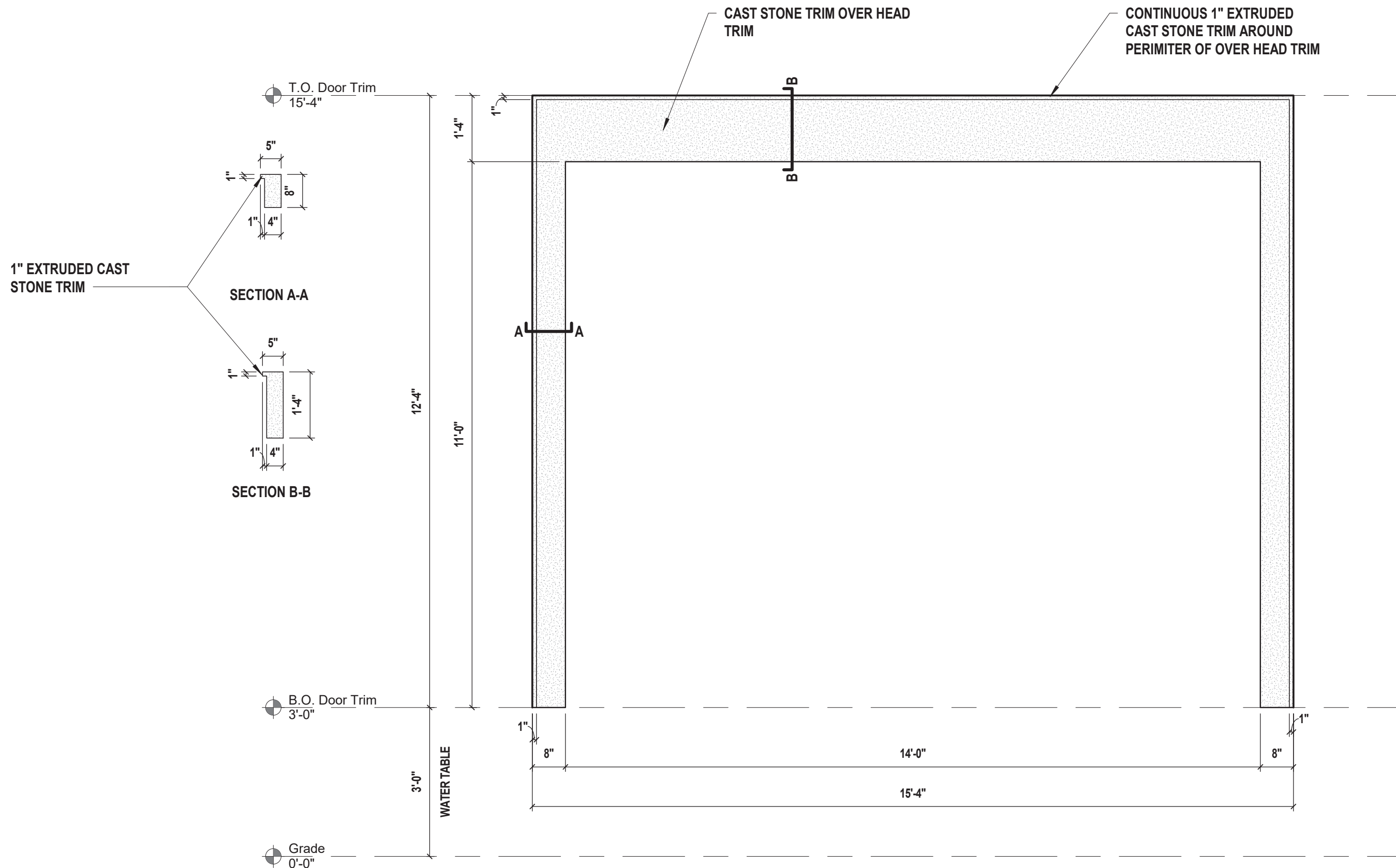
2 O.H. Door - Jamb Detail

SCALE: 1 1/2" = 1'-0"

NOTE:
SEE 'P' DRAWINGS FOR HOSE BIB
LOCATIONS WITHIN COLUMN ENCLOSURES

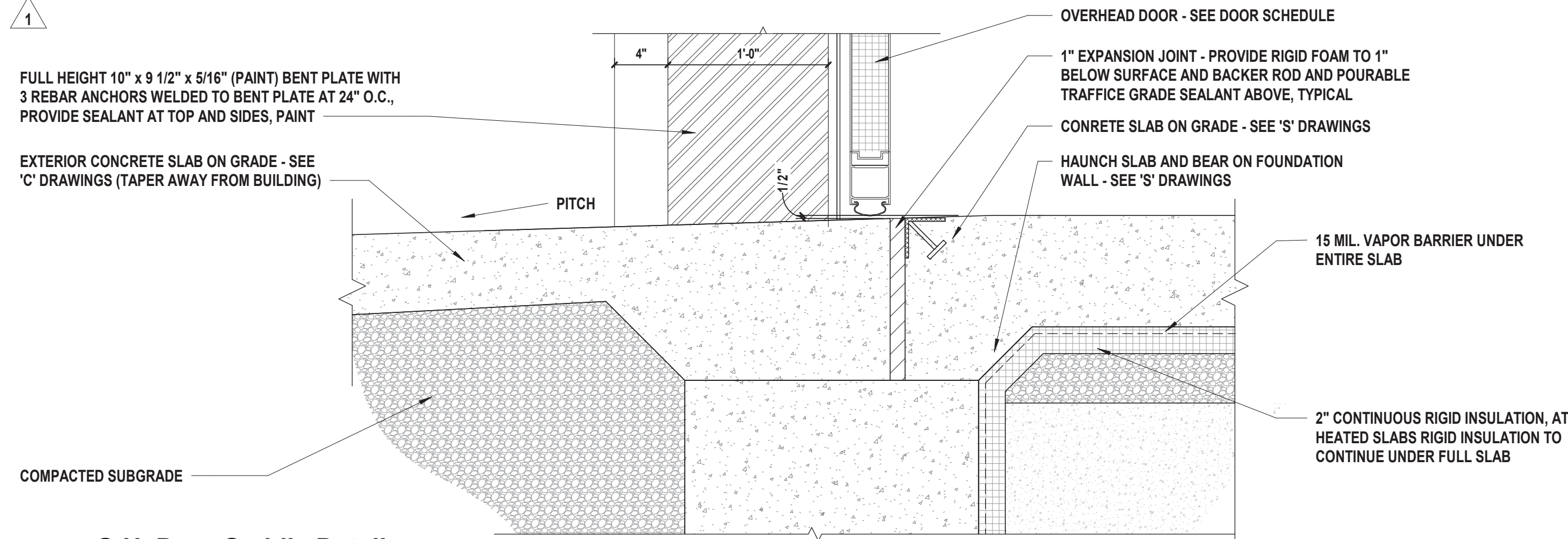
4 Cast Stone O.H. Door Trim

SCALE: 1/2" = 1'-0"



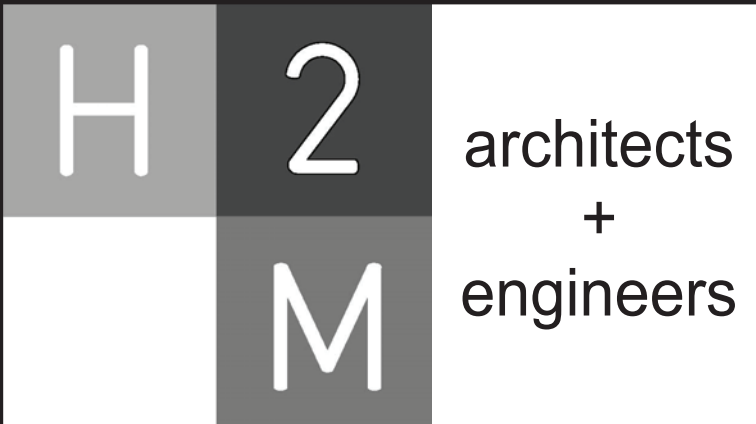
NOTE:

1. FINAL COLOR, AND FINISH TEXTURE TO BE SELECTED BY OWNER AND ARCHITECT DURING SHOP DRAWING REVIEW. DISPLAYED INFORMATION IS FOR REFERENCE ONLY.
2. CONTRACTOR TO INSTALL CAST STONE AS PER MANUFACTURERS REQUIREMENTS AND TO PROVIDE A WEATHERTIGHT SEAL.
3. REFER TO CONCRETE NCMA TEK GUIDELINES FOR INSTALLATION METHODS FOR BRICK MASONRY / CAST STONE JOINTS.



3 O.H. Door Saddle Detail

SCALE: 1 1/2" = 1'-0"



538 Broad Hollow Road, 4th Floor East
Melville, NY 11747
631.756.8000 • www.h2m.com

CONSULTANTS:


MARK	DATE	DESCRIPTION
1	8/24/2022	ADDENDUM #1

DESIGNED BY: KEM	DRAWN BY: JHG	CHECKED BY:	REVIEWED BY:
PROJECT No: VGFD2001	DATE: JULY 2022	SCALE:	AS SHOWN

CLIENT

VAILS GATE FIRE DISTRICT

New Storage Building (Phase I)
New Fire Station (Phase II)



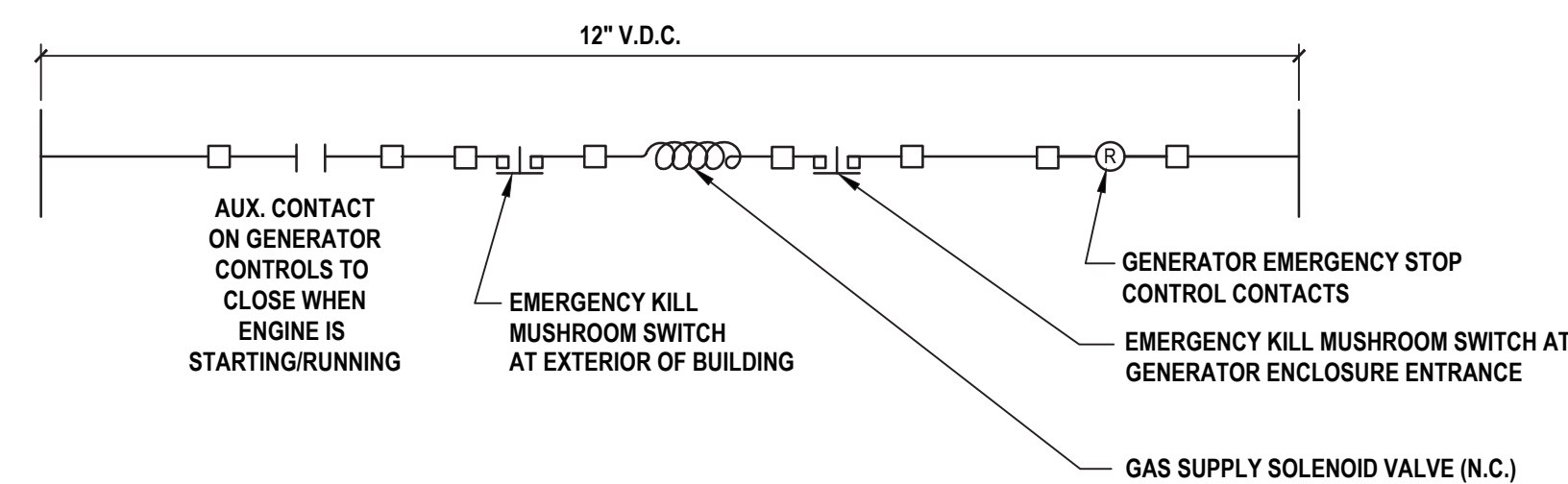
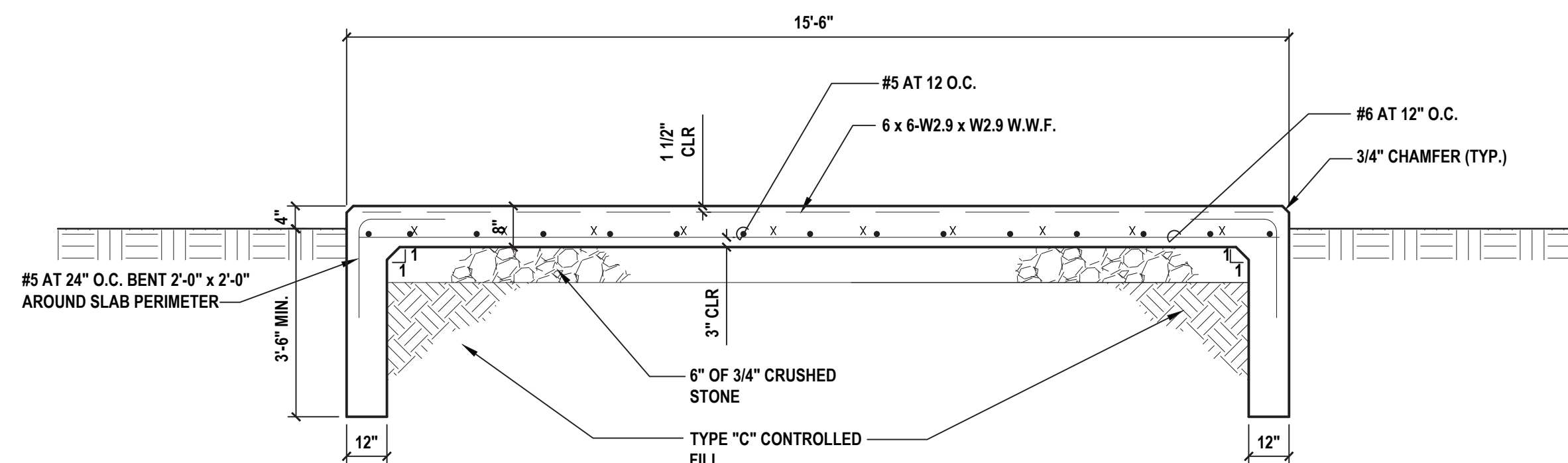
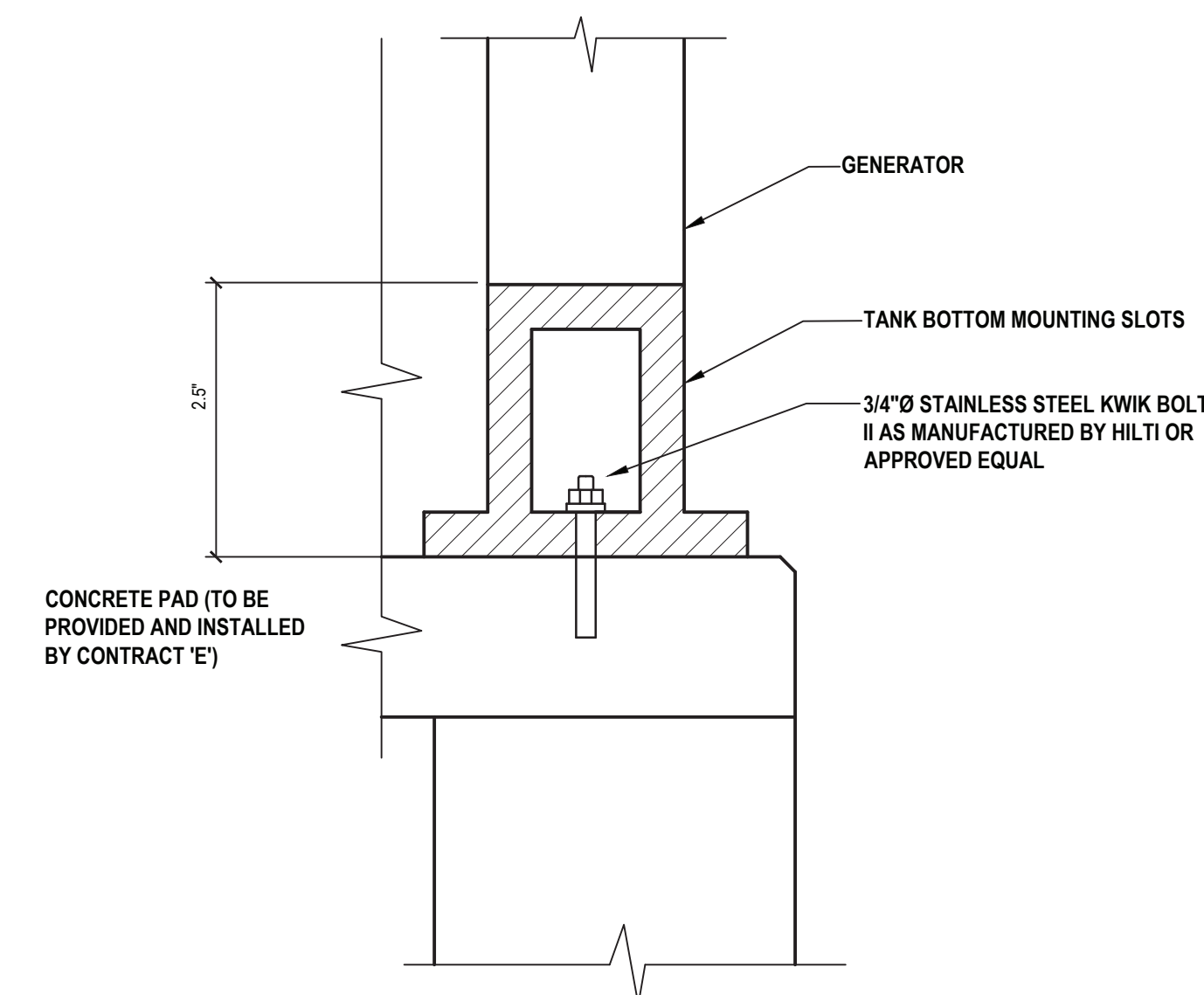
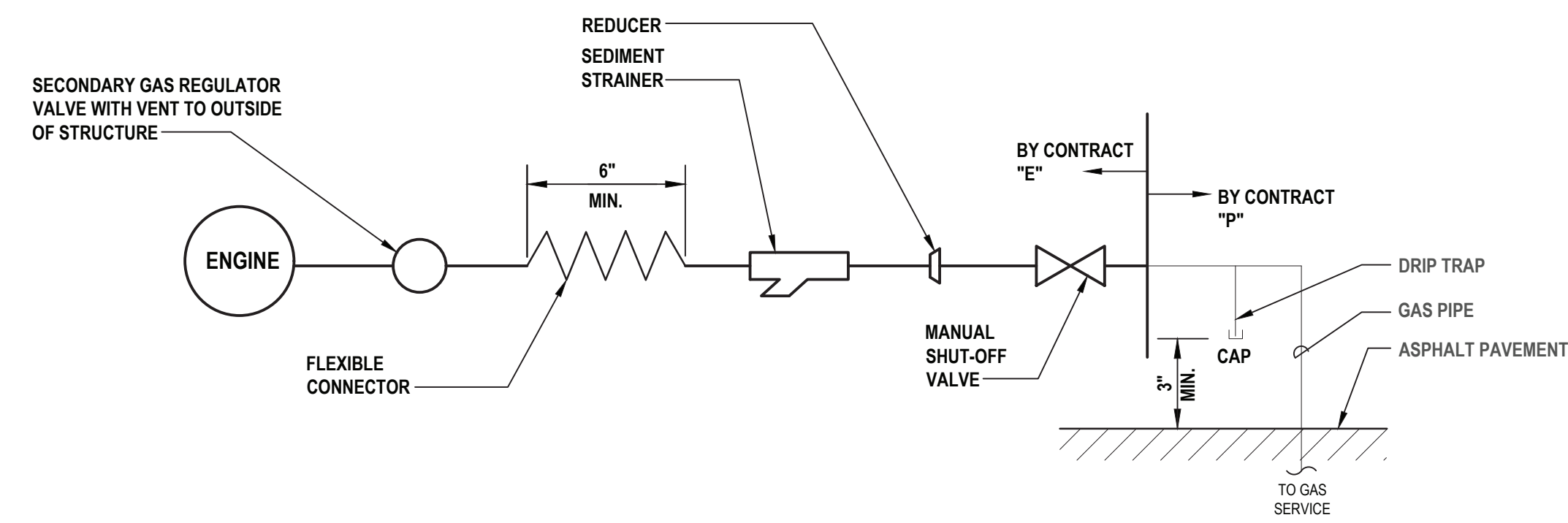
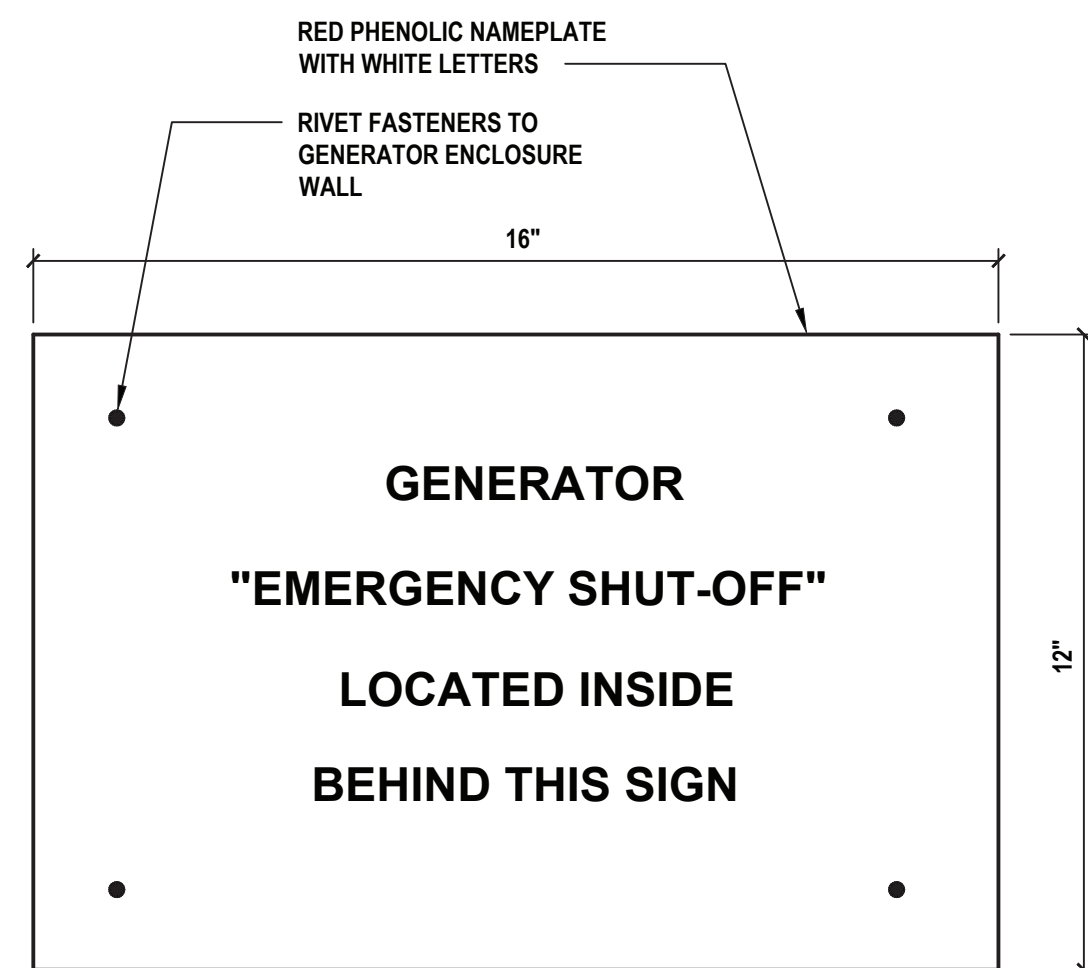
872 Blooming Grove Turnpike
New Windsor, NY 12553

CONTRACT
CONTRACT G GENERAL CONSTRUCTION

STATUS
FINAL BID DOCUMENT

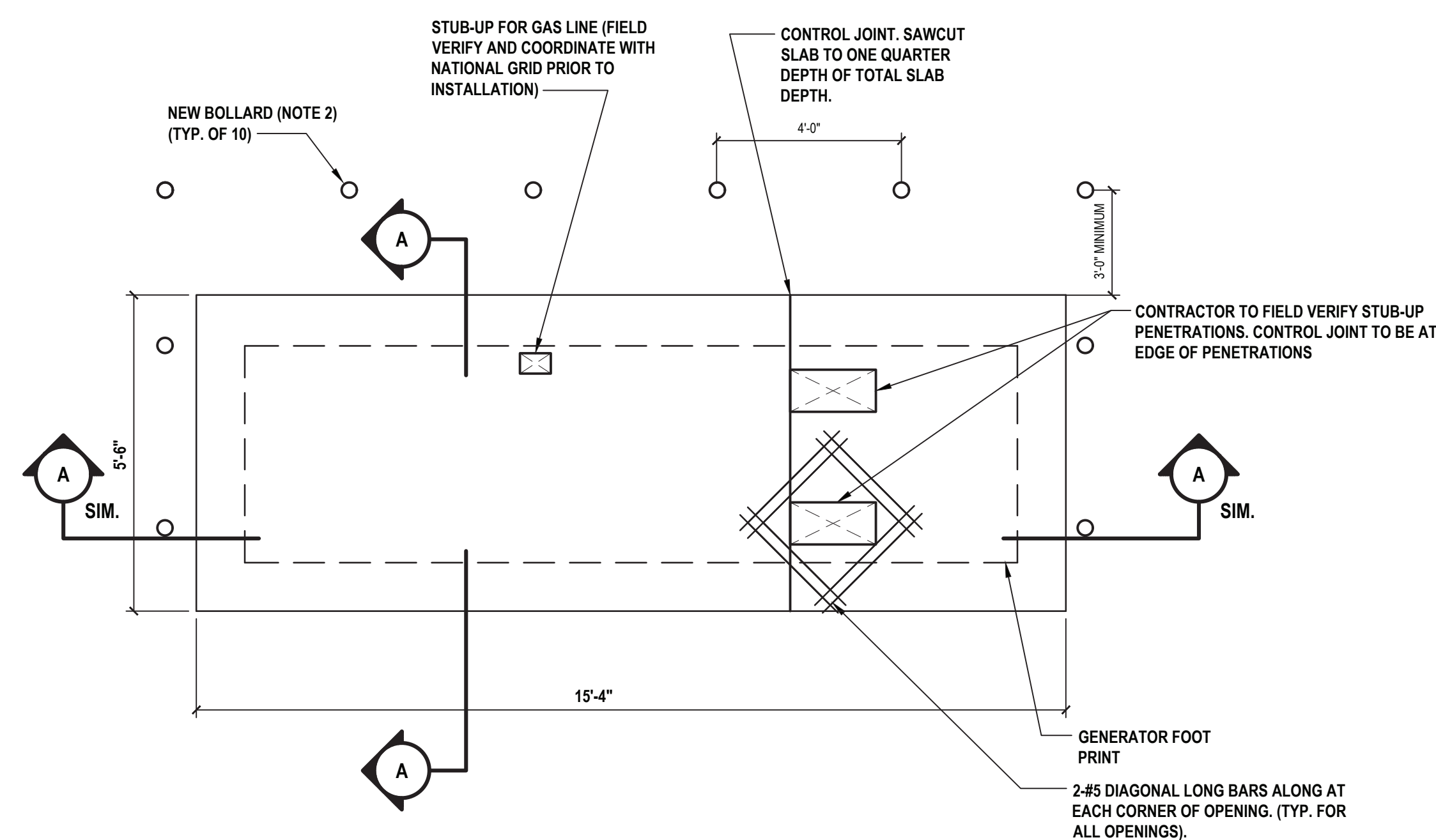
SHEET TITLE
ARCHITECTURE DOOR DETAILS NEW FIRE STATION PHASE 2

DRAWING No.
A2 522.01

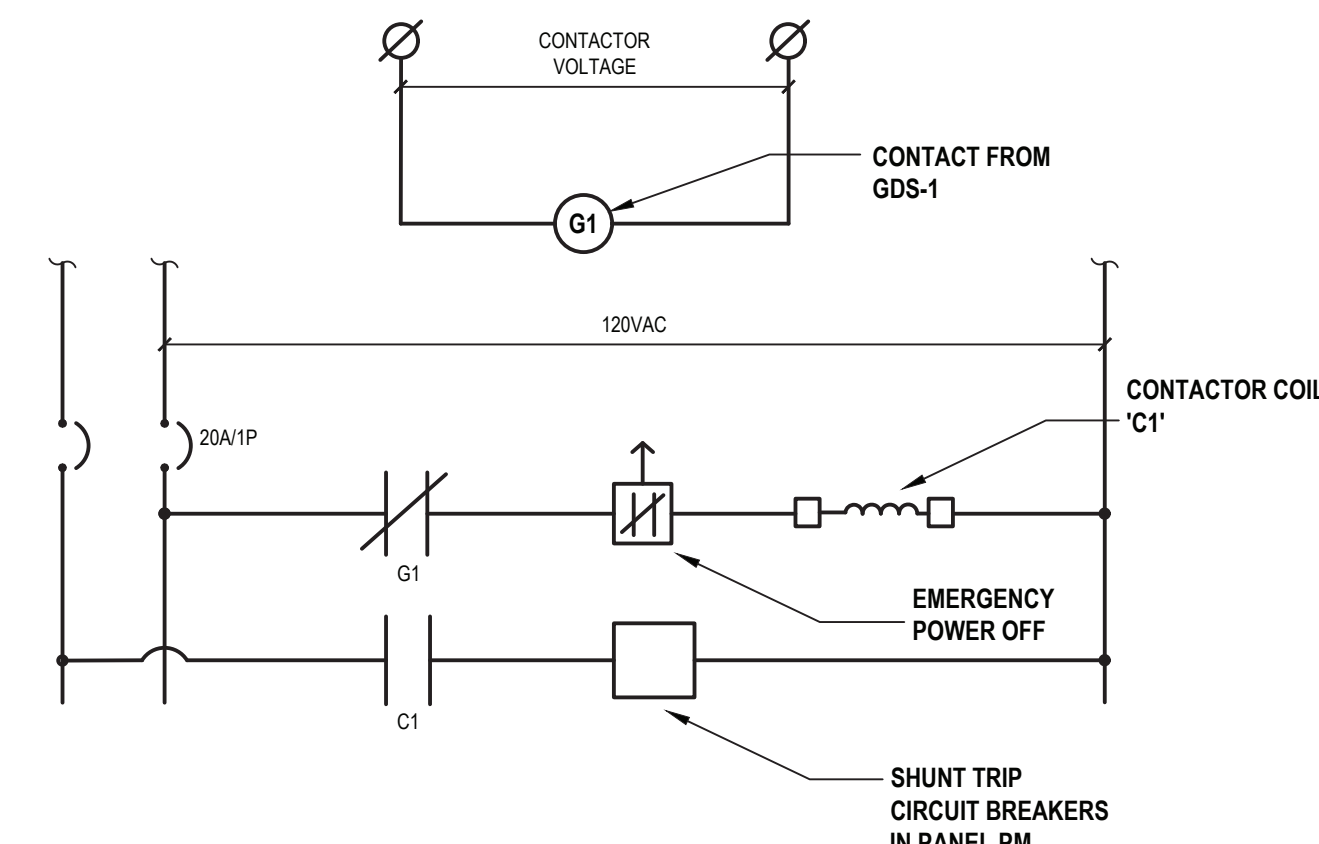
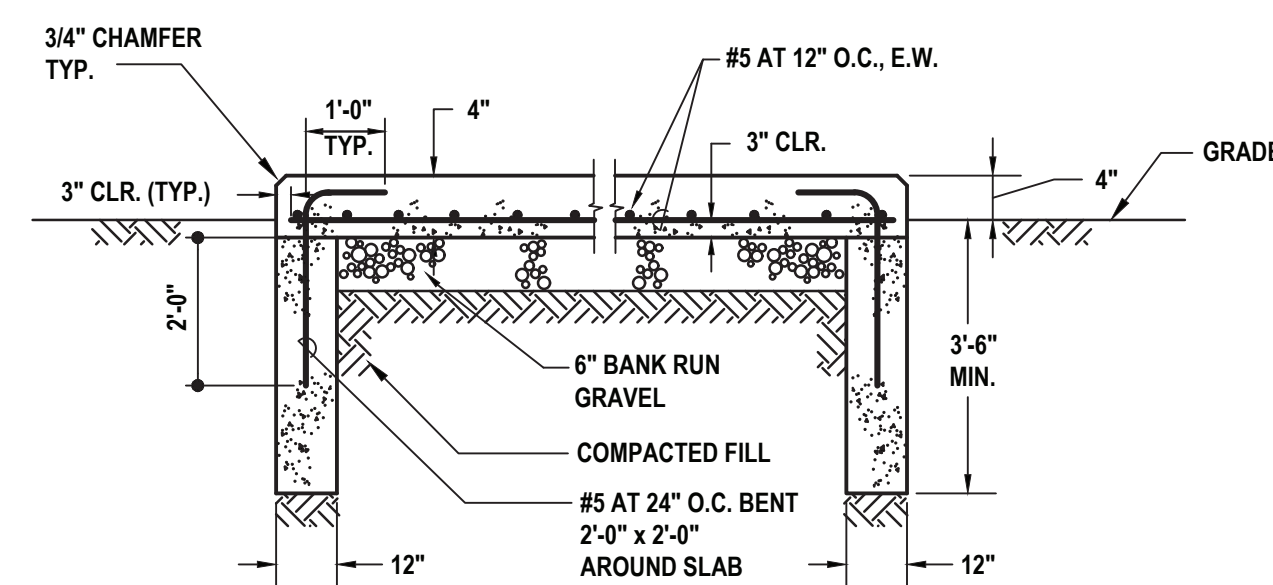


NOTE:

1. "NO SMOKING" SIGNS SHALL BE PLACED CONSPICUOUSLY ON GENERATOR ENCLOSURE



NOTES:
1. PAD DIMENSION BASED ON SPECIFIED EQUIPMENT. 1'-0" MIN ALL AROUND



538 Broad Hollow Road, 4th Floor East
Melville, NY 11747
631.756.8000 • www.h2m.com

CONSULTANTS:

[illegible]

ALTERATION OF THIS DOCUMENT EXCEPT BY A LICENSED PROFESSIONAL IS ILLEGAL			
DESIGNED BY: SMP/CMP	DRAWN BY: SMP/CMP	CHECKED BY: AWK	REVIEWED BY: AWK
PROJECT No.: VGFD2001	DATE: JULY 2022	SCALE: AS SHOWN	

CLIENT

VAILS GATE FIRE DISTRICT

New Storage Building (Phase I)
New Fire Station (Phase II)



872 Blooming Grove Turnpike
New Windsor, NY 12553

CONTRACT

CONTRACT G
GENERAL CONSTRUCTION

STATUS

FINAL BID DOCUMENT

SHEET TITLE

**ELECTRICAL DETAILS
NEW FIRE STATION
PHASE 2**

DRAWING No.

No. **E2 503.00**